

• EST  1921 •

# PERMACHEF

DRESSING YOUR PASSION



# CATALOGUE

CHEF COATS • CHEF HATS • APRONS • PANTS • SHOES & ACCESSORIES • HOSPITALITY





# NICE TO MEET YOU!

We are leaders in apparel for the gastronomic and hospitality industry. Based on the values of Commitment, Quality and Innovation we have managed to transform the concept of the mandatory use of a uniform, into highly aspirational garments, empowering those who wear them, because the uniform has become today an extension of the people's personality.

We are committed to the environment; therefore our fabric suppliers are the best in Latin America. They have a water treatment plant that, at the last stage when finishing the fabrics, the water goes out even cleaner than when it arrived. We are currently an important generator of employment for families with more than 70 people working directly with us, in areas such as: Fashion Design, Advertising, Sales force, IT, Production, Administration, Packaging, Quality, Security, etc. And we indirectly generate more than 120 jobs from suppliers and manufacturers.

*PermaChef*



# **BRAND** AMBASSADORS

# BRAND AMBASSADORS

Prestigious chefs with whom we can schedule conferences and gastro-workshops.  
In addition to always proudly wearing their PermaChef uniform.



**Paulina Abascal**  
Most recognized bakery and pastry chef in Latin America



**Karen Valadez**  
Executive Chef Casa Valadez and the Virgen de la Cueva, Guanajuato, Mexico



**Araceli Enríquez Lavín**  
Executive Chef at Liverpool



**Alejandro Kuri**  
Owner and Executive Chef of La Casa de las Enchiladas, Big Pig and The Lower Deck



**Graham Campbell**  
Scotland's youngest chef to receive a Michelin Star



**Declan Horgan**  
Michelin star. Top 3 in season 19 of Gordon Ramsay's Fox Hell's Kitchen



**Carlos Gaytan**  
Owner and Executive Chef of Tzucu in Chicago and HA at @HotelXcaretMexico



**Lalo Plascencia**  
*CIG Mexico*  
*Research Center*  
*Gastonomic of Mexico*



**Miguel Bautista**  
Owner of "Solo Plantas". BIO restaurant in @HotelXcaretMexico



**Roy Padilla**  
2nd. Generation Master Chef Junior Mx

*PermaChef*



**CUSTOMERS**

# CUSTOMERS



Chef Graham  
*Campbell*



TZUCO









06 **CHEF HATS**  
COLLECTION

12 **BOUTIQUE**  
CHEF COATS

24 **SHORT SLEEVE**  
CHEF COATS

40 **INSTITUTIONAL**  
CHEF COATS

50 **APRONS**  
COLLECTION

74 **PANTS**  
COLLECTION

84 **CASUAL**  
CHEF HATS

94 **HOSPITALITY**  
COLLECTION

126 **ACCESSORIES**  
COLLECTION

137 **SIZE**  
CHARTS

# CHEF HATS

## COLLECTION



Need a fresh head? With PermaChef Chef Hats keep your head fresh and cool. We have a great variety of Hats made with high quality and breathable fabrics, Cool Vent™ panels, absorbent inside band and velcro adjustment. Our hats will provide you comfort, functionality, style and a touch of elegance. Besides, our Toque collection commands the attention of everyone in the kitchen. Made with our proprietary Permatela™ fabric, which maintains its elegance and shape after washing and ironing thanks to its permanent starch formula, resulting as a durable product that is reusable.

**No more disposable toques!**



PLEATED CHEF HAT

Velcro Closure for a better fit

| Band for wrapping and packing the hat | Absorbent interior towel

| PERMATELA®

Permanent starch processed fabric WASHABLE.  
More than 50 washes guaranteed

PERMACHEF





12" High



10" High



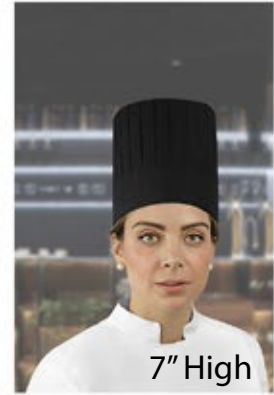
7" High



12" High



10" High



7" High

## PLEATED CHEF HATS (TOQUES)

50% Polyester - 50% Cotton



### PLEATED CHEF HAT C20

12" High  
Sizes: S(22") - M(24") - L(26")  
C20BL

### GORRO COCINERO ALFORZADO C20

12" High  
Sizes: S(22") - M(24") - L(26")  
C20NE

### PLEATED CHEF HAT C10

10" High  
Sizes: S(22") - M(24") - L(26")  
C10BL

### PLEATED CHEF HAT C10

10" High  
Sizes: S(22") - M(24") - L(26")  
C10NE

### PLEATED CHEF HAT C00

7" High  
Sizes: S(22") - M(24") - L(26")  
C00BL

### PLEATED CHEF HAT C00

7" High  
Sizes: S(22") - M(24") - L(26")  
C00NE

### Chef Hat with PERMATELA®

This Pleated Chef Hat is made with our proprietary Permatela™ fabric, which maintains its elegance and shape after washing and ironing. Band for wrapping and packing the hat. It stays in place with an adjustable Velcro® closure, and an absorbent band keeps your brow dry in the heat of service.

| PERMATELA®

Permanent starched fabric  
Easy to wash and easy to iron

PERMACHEF



| CHEF KAREN VALADEZ  
Guanajuato State, Mexico



PERMATELA®

## PRINTED CHEF HATS (TOQUES)

80% Polyester - 20% Cotton

### DIGNUS E9 CHEF HAT

9" High  
 Sizes: S(22") – M(24") – L(26")  
 E9BL

9" High  
 Sizes: S(22") – M(24") – L(26")  
 E9NE

### DIGNUS E7 CHEF HAT

7" High  
 Sizes: S(22") – M(24") – L(26")  
 E7BL

7" High  
 Sizes: S(22") – M(24") – L(26")  
 E7NE



### Unisex. Exclusive PermaChef®

Design with printed fabric resembling the pleated texture, giving as a result a lighter chef hat. Velcro® closure for a better fit, band for wrapping and packing the hat, absorbent inside band, produced with PERMATELA™ and open on top.

This classic chef hat commands the attention of everyone in the kitchen. We use a printed fabric to mimic the look of pleats, resulting in a more lightweight, washable and durable product that is reusable.

# BOUTIQUE CHEF COATS



With passion throughout our design experts, the manufacturing and production chain, PermaChef creates collections that are modern and stylish. Inspired by people like you all around the world. These collections will perfectly suit your trade, and the demanding requirements that you meet on a daily basis.



PERMACHEF



# PERMACHEF



INSPIRED BY THE LEGENDARY MEXICAN PAINTER  
| FRIDA KAHLO FK4



## COLLECTION FK4 PERMACHEF 100 YEARS

50% Polyester - 50% Cotton

Women Chef Coat :  
XS - 3XL  
FFK4NED

Men Chef Coat:  
XS - 5XL  
FFK4NEC

Women Apron:  
One size  
M2NECOFK4U

Men Apron:  
One Size  
M2NEFGFK4U

### Collection FK4

We commemorate our Centennial with this new collection that we created by the family of the famous painter, Frida Kahlo. In it, we have captured the hummingbirds, Xoloitzcuintles, and silhouettes of Frida, in the style of the painter: full of colors and strokes, thus uniting the legendary Mexican icons.

# PERMACHEF

| CHEF EDUARDO SÁNCHEZ VELA  
Puebla, Mexico



## Metropolitan Chef Coat

100% Cotton



Women: XS - 3XL  
FNYMZD

Men: XS - 3XL & 5XL  
FNYMZC

### Maintain your culinary edge with the Metropolitan Chef Coat

Color: Denim Blue, front zipper closure, apron tab on the back, pockets on both right and left sleeves, opening designed on the right sleeve for earphone wire makes it convenient for you to listen to music while cooking, hidden clip buttons and roll-up sleeves.

PERMACHEF



| CHEF KAREN VALADEZ  
Guanajuato State, Mexico



# Ferran Chef Coat

50% Polyester - 50% Cotton



Women: XS - 3XL  
**FFBLD00NE**  
Men: XS - 3XL & 5XL  
**FFBLC00NE**



Women: XS - 3XL  
**FFNED00BL**  
Men: XS - 3XL &  
5XL  
**FFNEC00BL**

Roll-up sleeves, hidden clip buttons, hidden Cool Vent™ Back panel 100% Polyester.

PERMACHEF







# Basic Chef Coat

50% Polyester - 50% Cotton



Women: XS - 3XL  
**FBGODBR**  
 Men: XS - 3XL & 5XL  
**FBGOCBR**

Women: XS - 3XL  
**FBVIDBR**  
 Men: XS - 3XL & 5XL  
**FBVICBR**

Women: XS - 3XL  
**FBRJDBR**  
 Men: XS - 3XL & 5XL  
**FBRJCBR**

Women: XS - 3XL  
**FBAPDBR**  
 Men: XS - 3XL & 5XL  
**FBAPCBR**

Women: XS - 3XL  
**FBNEDBR**  
 Men: XS - 3XL & 5XL  
**FBNECBR**

Women: XS - 3XL  
**FBAADB**  
 Men: XS - 3XL & 5XL  
**FBAACBR**

Roll-up sleeves, hidden clip buttons and apron tab on the back.

PERMACHEF

| CHEF KAREN VALADEZ  
Guanajuato State, Mexico



# IMPERIAL CHEF COAT

50% Polyester - 50% Cotton

Women: XS - 3XL  
**FINED**  
 Men: XS - 3XL & 5XL  
**FINEC**

Women: XS - 3XL  
**FIBLD**  
 Men: XS - 3XL & 5XL  
**FIBLC**

Women: XS - 3XL  
**FIRSD**

Roll-up sleeves, custom buttons and apron tab on the back.

# SHORT SLEEVE CHEF COATS



---

We know kitchen's high temperatures, therefore we have created a fresh, light and contemporary short-sleeve collection. Some of our garments have Cool Vent™ technology that has been the preferred heat-management solution to keep you cool. Find your favorite color and look your best today.

# PERMACHEF



PERMACHEF





## DUBAI CHEF COAT

50% Polyester - 50% Cotton/  
Cool Vent 100% Polyester



Women: XS - 3XL  
**FDUDIBLD**  
Men: XS - 3XL & 5XL  
**FDUDIBLC**



Women: XS - 3XL  
**FDUZANED**  
Men: XS - 3XL & 5XL  
**FDUZANEC**

Hidden Clip Buttons, Cool Vent™ on the back and shoulders. The Dubai Chef Coat helps you stay cool while you look fantastic. This short sleeve, lightweight chef coat features a cool vent panel on the back that provides comfort and breathability. Smooth and clean front with hidden clip buttons for easy wear.



PERMACHEF





## OSAKA CHEF COAT

50% Polyester - 50% Cotton



Unisex: XS - 3XL & 5XL  
FOSVPU

Short sleeve, left sleeve pocket, hidden clip buttons, decorative wooden button and smooth front. Solid color: Pistachio green.

The Osaka chef coat is ideal for warm environments. It features a rectangular pocket in the sleeve for the thermometer or any other utensils.





## MANDARIN BAMBOO CHEF COAT

50% Polyester - 50% Cotton



Unisex: XS - 3XL & 5XL  
FMBCAU

knot buttons and pocket on the left sleeve. Color: Cappuccino.

# PERMACHEF





## CARIBE CHEF COAT

Denim blue: 100% Cotton / Cool Vent 100% Polyester

Black and white: 50% Polyester - 50% Cotton

Women: XS - 3XL

FCAMZD

Men: XS - 3XL &  
5XL

FCAMZC

Women: XS - 3XL

FCABLD

Men: XS - 3XL &  
5XL

FCABLC

Women: XS - 3XL

FCANED

Men: XS - 3XL & 5XL

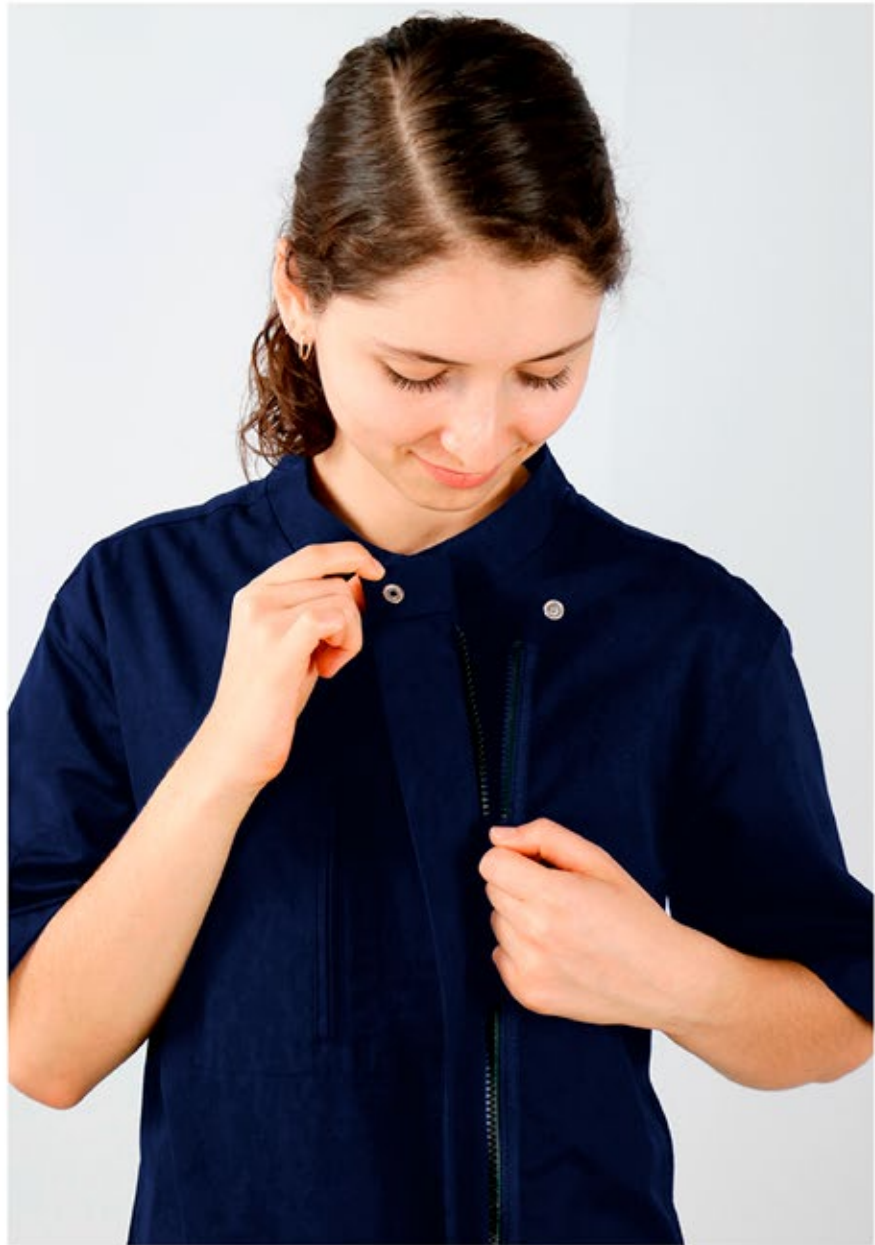
FCANEC

Five Clip Buttons, hidden Cool Vent™ on the back, mandarin collar, back apron tab and front and sleeve pockets. Color: denim blue, black and white.

# PERMACHEF



| CHEF MARILUZ CASADOS  
Puebla, Mexico



# HABANA CHEF COAT

50% Polyester - 50% Cotton

Habana Blue 100% cotton | Side Cool Vent panels

Women:  
XS - 3XL  
FHAGRD

Women:  
XS - 3XL  
FHABLD

Women:  
XS - 3XL  
FHANED

Women:  
XS - 3XL  
FHAAMD

Men:  
XS - 3XL & 5XL  
FHAGRC

Men:  
XS - 3XL & 5XL  
FHABLU

Men:  
XS - 3XL & 5XL  
FHANEC

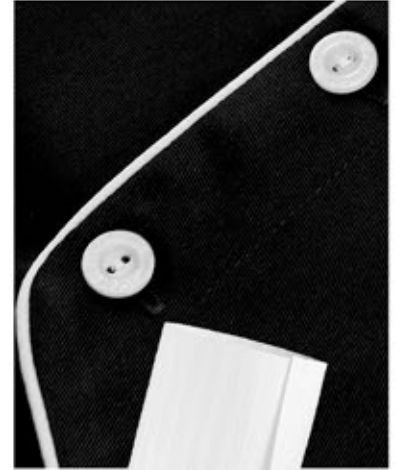
Men:  
XS - 3XL & 5XL  
FHAAMC

Side Cool Vent panels, side pockets, left sleeve pocket, front chest pocket with zipper closure, hidden zipper closure, apron tab on the back and smooth front. Solid colors: white, black, grey and blue.



**PERMACHEF**





## EUROPE CHEF COAT

50% Polyester - 50% Cotton



Unisex: S - 3XL & 5XL  
CEUBLU03



Unisex: S - 3XL & 5XL  
CEUNEU03

Left chest pocket and three plastic buttons. Colors: black, white with three-color collar. The Europe Chef Coat has the look of elegance, with the cool comfort of short sleeves. It comes with a contrasting white, black, or three-color collar. This unisex jacket is great for all members of your team.

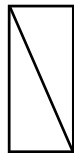
| CHEF LALO PLASCENCIA  
Mexico, City

PERMACHEF



## EUROPE CHEF COAT

50% Polyester - 50% Cotton 50%



Unisex: S - 3XL & 5XL  
**CEUBLU00NE**



Unisex: S - 3XL & 5XL  
**CEUNEU00BL**

Left chest pocket and three plastic buttons. Colors: black or white with contrasting black or white piping. The Europe chef coat has the look of elegance, with the cool comfort of short sleeves. It comes with a contrasting white, black or tri-color collar. This unisex Filipina is ideal for all members of your team.

# INSTITUTIONAL CHEF COATS



In this collection you will find the perfect match between tradition and innovation, with models featuring refined and comfortable lines. At PermaChef, we manufacture professional clothing that is an essential component of the art in the kitchen. Find now the ultimate professional, elegant and functional style.

# PERMACHEF

| CHEF GRAHAM CAMPBELL  
United States



PERMACHEF





## DIGNUS CHEF COAT

50% Polyester - 50% Cotton



Women: XS - 3XL  
**FDBLD**  
Men: XS-3XL & 5 XL  
**FDBLC**



Women: XS - 3XL  
**FDNED**  
Men: XS-3XL & 5 XL  
**FDNEC**

Designed for daily use. Easy care thanks to its intimate blend of polyester-cotton fabrics. In addition, it has a double row of buttons to quickly cover any incident.

PERMACHEF



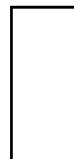




## BASIC WITH JERSEY BACK CHEF COAT

50% Polyester - 50% Cotton

Cool Vent back panel 100% Polyester



Unisex:  
XS - 3XL & 5XL  
**FBBLUJE**



Unisex:  
XS - 3XL & 5XL  
**FBNEUJE**

Easy to care for thanks to its intimate mix of polyester-cotton fabrics. In addition to having a double row of buttons to quickly cover any incident. Designed for everyday use.

# PERMACHEF

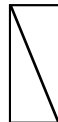
| CHEF MARILUZ CASADOS  
Puebla, Mexico





# CLASSIC CHEF COAT

50% Polyester - 50% Cotton



Women: XS - 3XL  
FCBLD00NE  
Men: XS - 3XL & 5XL  
FCBLC00NE



Women: XS - 3XL  
FCRJD00NE  
Men: XS - 3XL & 5XL  
FCRJCO0NE



Women: XS - 3XL  
FCNED00BL  
Men: XS - 3XL & 5XL  
FCNEC00BL

This coat will be your best partner while you are in the kitchen. Its classic design in addition to giving you comfort and protection will make you look great at all times.

The Classic Chef Coat is made with 50/50 Poly Cotton blend and features 10 plastic buttons in the women chef coat and 12 in a men chef coat, contrast piping along neckline, chest and cuffs, 3/4 sleeves, left sleeve pocket and a reversible closure.

**PERMACHEF**





## NOVUS CHEF COAT

65% Polyester - 35% Cotton



Unisex: S - 3XL & 5XL  
FNBLUM



Unisex: S - 3XL & 5XL  
FNNEU

Unisex, designed for daily use. Easy care thanks to its intimate blend of polyester-cotton fabrics. In addition, it has a double row of buttons to quickly cover any incident.

# APRONS

## COLLECTION



In PermaChef there is an apron for everyone, our Chef Aprons are designed to provide both flexibility and comfort at any hard-working times. With adjustable neck ties or cross-back ties choose your favorite.

Here you will find the right apron to maximize the back of your house while styling up the front. Innovation and design in all our Aprons: waist aprons, 4-way aprons, short aprons, bib aprons, canvas aprons, bistro aprons, denim aprons, server aprons.



PERMACHEF

# PERMACHEF



| CHEF KAREN VALADEZ  
Guanajuato State, Mexico





## CHICAGO CHEF COAT

65% Polyester - 35% Cotton

Unisex:  
One size  
**M2RJ00NEU**

Unisex, one size, one chest pocket and one waist pocket, black Utility vinyl loop to hang items from, metal grommets, color: red with black vinyl accents. This bib apron features one chest and a waist pocket to carry all your belongings, metal grommets and black vinyl Cross-back ties for a custom fit.

PERMACHEF





## METROPOLITAN BIB APRON

100% Cotton

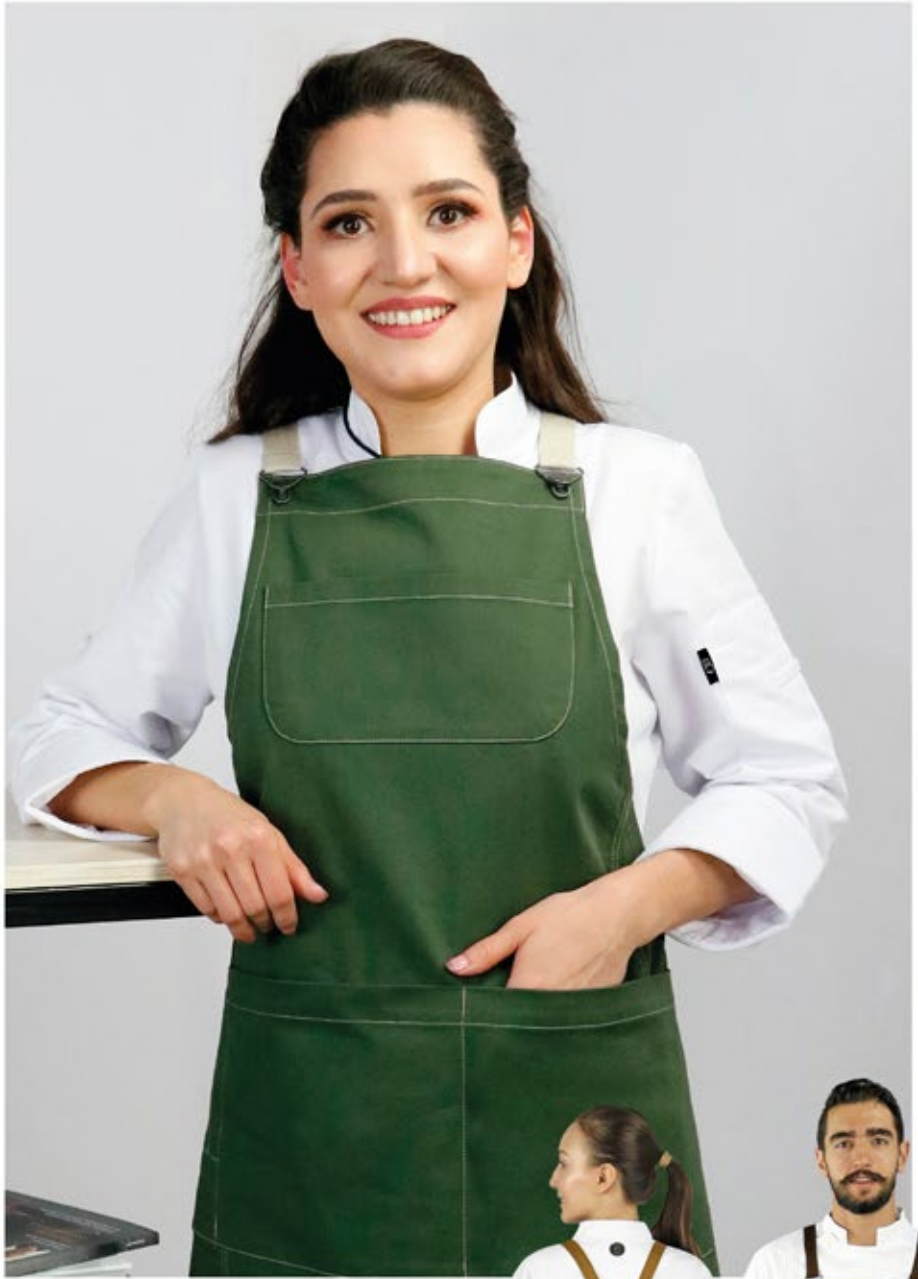


Unisex:  
One size  
**M2URMZU3**

One size, two front pockets, metallic clip button, contrast fabric ties and pockets.  
Color: denim blue.



**PERMACHEF**



# TEXAS BIB APRON

97% Cotton - 3% Spandex



Unisex: One size  
**M2TEXNEU**



Unisex: One size  
**M2TEXVNU**



Unisex: One size  
**M2TEXCSU**



Unisex: One size  
**M2TEXNEU**

One size, triple front pockets, one bib pocket, overall Buckles and cross-back ties for a custom fit.  
Colors: red, black, brown duck, green.

# PERMACHEF

| CHEF IVAN CANO  
Puebla, Mexico





## Interchangeable Straps **BIB APRON**

98% Cotton - 2% Spandex

Unisex: One size  
**M2MZCIU**

One size and side pocket. Color: gray. Straps color: red, blue and khaki.

PERMACHEF







## CAMOUFLAGE BIB APRON

100% Polyester



Unisex: one size  
**M2CAMU**

One size, two front pockets, metallic hook, contrast fabric ties and pockets.

PERMACHEF





## URBAN BIB APRON

100% Cotton



Unisex: one size  
**M2URNEU2**

One size, side bag, front slit and metal button. Color: denim blue.




PERMACHEF



## BARISTA BIB APRON WAIST APRON

40% Polyester - 60% Cotton


 Unisex: one size  
 Waist Apron  
**M1BAMKU**


 Unisex: one size  
**M2BAMKU**

One size, triple front pocket, one bib pocket, metal grommets and cross-back ties for a custom fit. Colors: beige and sand color. This bib apron features one bib pocket and a triple front pocket to carry all your belongings, metal grommets and contrast Cross-back ties for a custom fit.

PERMACHEF





# CORIUM BIB APRON

100% Vinyl



Unisex: One size  
**M2CORU**

**CORIUM** bib apron is presented as a unique, practical apron with a vinyl composition and a leather finish. Metallic details that provide security, in addition to having a total of three bags, two lower and one upper left.

Thanks to the composition of the apron is soft to the touch, with this you can be in comfort inside and outside the kitchen.

PERMACHEF











## CARAMEL KIT & CARAMEL JUNIOR

50% Polyester - 50% Cotton

	Unisex: one size <b>KITCAR</b>		Unisex: one size <b>JRM2CAME</b>
	Unisex: one size <b>KITMECA</b>		Unisex: one size <b>JRM2CARO</b>

One size. Colors: Mint or Pink.  
Kit Caramel includes: Bib Apron and Pot holder.



PERMACHEF



## BASIC BIB APRON

Black, white and red: 65% Polyester - 35% Cotton

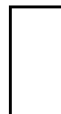
Stripes: 40% Polyester - 60% Cotton



Unisex: one size  
M2NEU



Unisex: one size  
M2RJU



Unisex: one size  
M2BLU



Unisex: one size  
M2RNU

One size. Colors: white, black, red and stripes. All our aprons are made with care, from selecting only High-quality fabrics to developing the right design and taking care of every detail, our aprons are made to last and to keep you clean while you are in the kitchen.

PERMACHEF





# TWO-WAY CHEF APRON WITHOUT WAISTBAND

65% Polyester - 35% Cotton



Unisex: one size  
**MANEUSP**



Unisex: one size  
**MABLUSP**

65% Polyester - 35% Cotton | Unisex and one size. Colors: black and white.

# PANTS COLLECTION



Find your perfect fit with our exclusive cuts for women or men pants. Stylish, and functional pants to develop your daily tasks in a comfortable way. Made of high quality fabrics to provide easy movement and functionality.

**PERMACHEF**



PERMACHEF







## CENDRA CHEF PANTS

25% Polyester - 75% Cotton

Unisex: XS - 3XL & 5XL  
**PACENU**

Elastic waste with drawstring, two side seam pockets, one back pocket and straight leg styling. Our chef pants have a relaxed fit, you will never feel too loose yet loose enough to feel comfortable during your work day.



PERMACHEF



## UNISEX CHEF PANTS

97% Cotton - 3 % Spandex

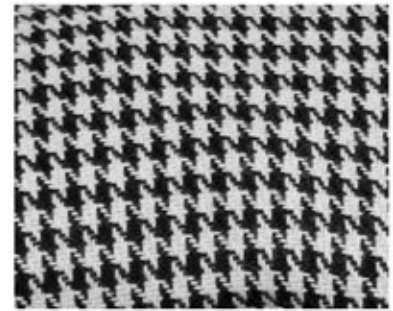
Unisex: XS - 3XL  
**PANED**

---

Elastic waistband, two front pockets and two back pocket with velcro closure. Our womens chef pants are specially designed to fit the female figure. These chef pants feature an elastic waistband, two front pockets, and two back pockets with velcro closure to keep your belongings safe at any time.

**PERMACHEF**





# CLASSTIC CHEF PANTS

40% Polyester - 60% Cotton



65 Polyester - 35 Cotton  
Unisex: XS - 3XL & 5XL  
**PANEU**



Unisex: XS - 3XL & 5XL  
**PARNU**



Unisex: XS - 3XL & 5XL  
**PAMIU**



Unisex: XS - 3XL & 5XL  
**PAMAU**

Unisex, elastic waist with drawstring, two side seam pockets and one back pocket, straight leg styling.



**PERMACHEF**



## CARGO CHEF PANTS

65% Polyester - 35% Cotton



Unisex: XS - 3XL & 5XL  
PCNEU

Unisex, elastic waist with drawstring, two side seam pockets, one back pocket and straight leg styling.  
Color: black.

# CASUAL CHEF HATS



Need a fresh head? With PermaChef Chef Hats keep your head fresh and cool. Our hats will provide you comfort, functionality and style. No more disposable toques!



PERMACHEF



# PERMACHEF

| CHEF MARILUZ CASADOS  
Puebla, Mexico



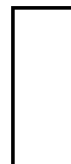
## TOQUE

### C30

50% Polyester - 50% Cotton



Unisex: one size  
C30NE



Unisex: one size  
C30BL

Unisex and Produced with PERMATELA™. Colors: white and black.



PERMACHEF



# CLASSIC CHEF BEANIE

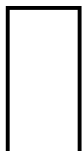
Black, white and red: 65% Polyester - 35% Cotton  
 Stripes: 40% Polyester - 60% Cotton



Unisex: one size  
**CORNE**



Unisex: one size  
**CORRJ**



Unisex: one size  
**CORBL**



Unisex: one size  
**CORRN**

Unisex and one size. Colors: black, white, red and stripes.

PERMACHEF





# C55 SKULL CAP

Black and white: 65% Polyester - 35% Cotton

Stripes: 40% Polyester - 60% Cotton



Unisex: one size  
C55BL



Unisex: one size  
C55RN



Unisex: one size  
C55NE

Unisex, one size, Velcro® closure for a better fit and Cool Vent™ fabric top.  
Colors: black, white and stripes.

# PERMACHEF







## VERSATUS SKULL CAP

65% Polyester - 35% Cotton



Unisex: one size  
VERBL



Unisex: one size  
VERNE

One size with Velcro® closure for a better fit, produced with PERMATELA™ and Cool Vent™ on top.  
Colors: white and black.

# HOSPITALITY COLLECTION



---

We have different garments such as Polo's, t-shirts, dress shirts, caps, dressing pants, suits, among others designed to meet all stringent hospitality industry standards with the finest fabrics to keep your staff with a modern look projecting style, elegance, and authority.



**PERMACHEF**

PERMACHEF





## SERVER JACKET

65% Polyester - 35 % Cotton



Unisex: XS - 3XL & 5XL  
**FSNEU00DO**

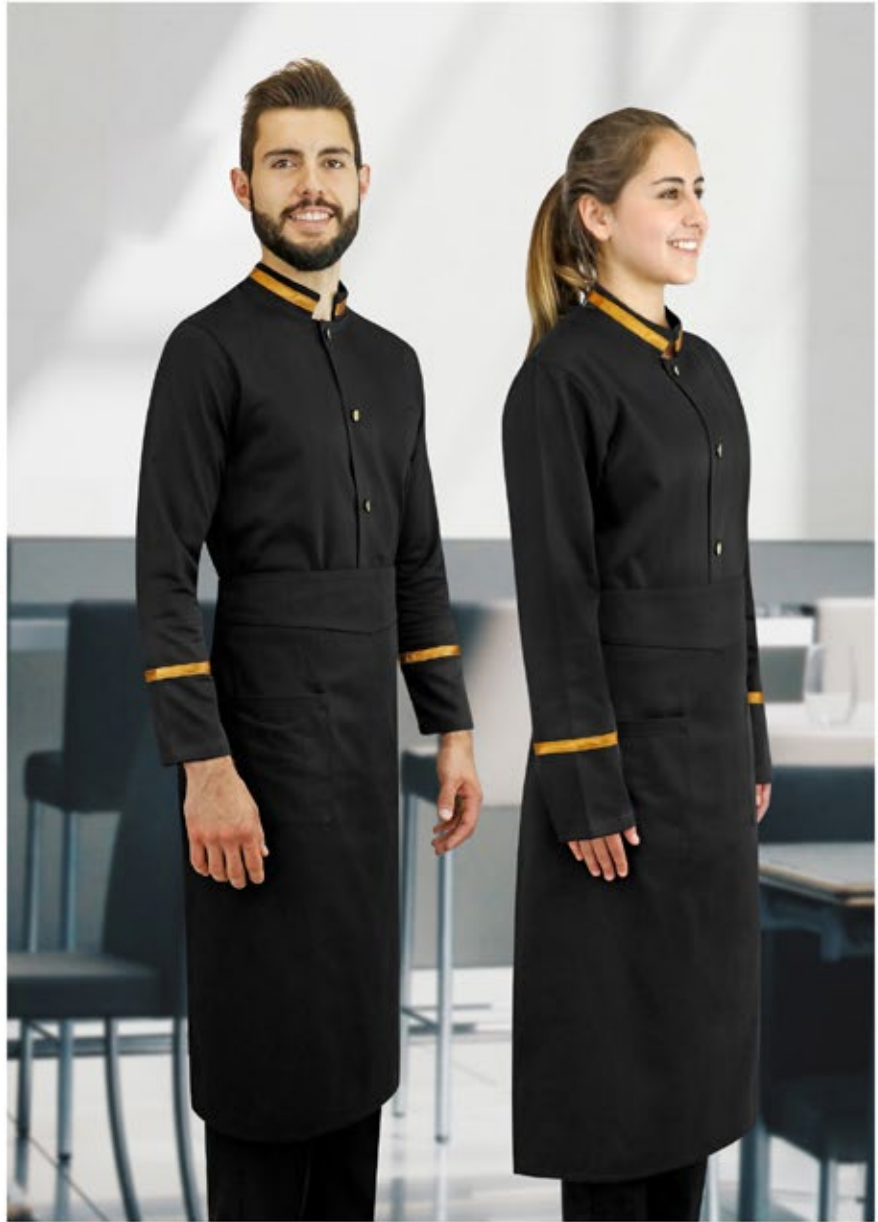


Unisex: XS - 3XL & 5XL  
**FSBLU00NE**

Golden buttons, black or Gold Placket Collar and Cuff. Colors: black or white.



PERMACHEF



# SERVER APRONS

65% Polyester - 35% Cotton



Three sections side pocket

Unisex: one size  
**MSNEUSPVM**



Side pockets

Unisex: one size  
**MSNEU2B**

Unisex, one size. Colors: white and black.

PERMACHEF







# BARTENDER APRONS

100% Vinyl



Unisex: one size  
M2NEUV

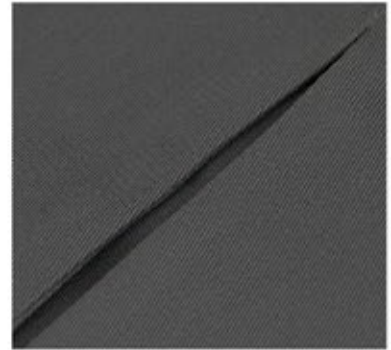


Short vinyl apron  
Unisex: one size  
M1NEUV

Unisex and one size each. Color: black.



PERMACHEF



## SOMMELIER APRON

65% Polyester - 35% Cotton



Unisex: one size  
**MSOMMNEU**



Unisex: one size  
**MSOMMGOU**

Unisex and one size. Color: black or grey.




PERMACHEF




# DRESS SHIRTS

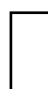
50% Polyester - 50% Cotton


 Women: XS - 3XL  
 Short sleeve: **BLUNE**  
 Long sleeve: **BLUNEDML**


Men: XS - 3XL & 5XL  
**CAMINEC / CAMINECML**


 Women: XS - 3XL  
 Short sleeve: **BLURJD**  
 Long sleeve: **BLURJDML**

Men: XS - 3XL & 5XL  
**CAMIRJC / CAMIRJCML**


 Women: XS - 3XL  
 Short sleeve: **BLUBLD**  
 Long sleeve: **BLUBLDML**

Men: XS - 3XL & 5XL  
**CAMIBLC / CAMIBLCML**

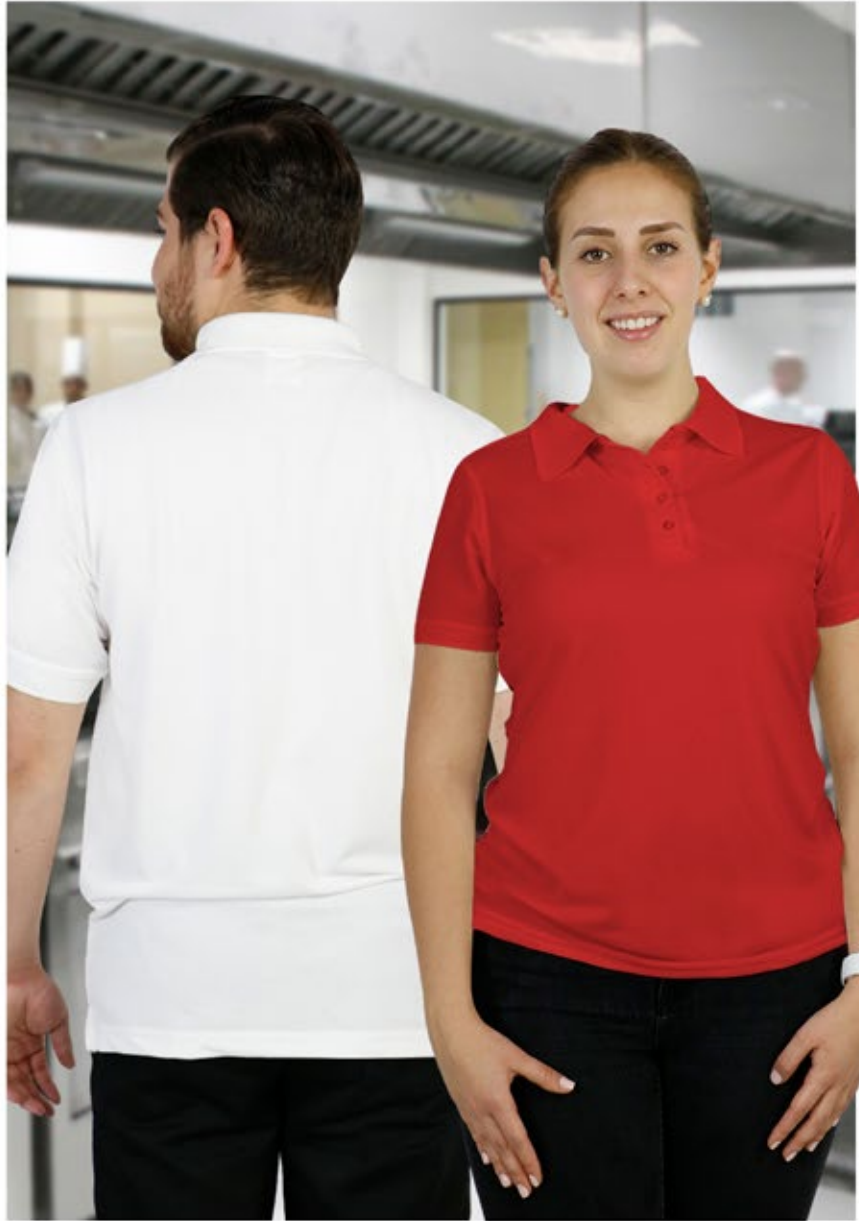

 Women: XS - 3XL  
 Short sleeve: **BLUACD**  
 Long sleeve: **BLUACDML**

Men: XS - 3XL & 5XL  
**CAMIACC / CAMIACCML**





**PERMACHEE**



# POLO DRY FIT

100% Polyester



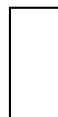
Women: XS - 2XL  
PPDYFTNED  
Men: XS - 2XL  
PPDYFTNEC



Women: XS - 2XL  
PPDYFTGROXD  
Men: XS - 2XL  
PPDYFTGROXC



Women: XS - 2XL  
PPDYFTVBD  
Men: XS - 2XL  
PPDYFTVBC



Women: XS - 2XL  
PPDYFTBLD  
Men: XS - 2XL  
PPDYFTBLC



Women: XS - 2XL  
PPDYFTAMD  
Men: XS - 2XL  
PPDYFTAMC



Women: XS - 3XL  
PPDYFTRJD  
Men: XS - 3XL & 5XL  
PPDYFTRJC

Colors: black, white, grey, red, green and blue.



PERMACHEF





# POLO

100% Cotton



Women: XS - 2XL  
**YPNED**  
 Caballero: XS - 2XL  
**YPNEC**



Women: XS - 2XL  
**YPRJD**  
 Caballero: XS - 2XL  
**YPRJC**



Women: XS - 2XL  
**YPBLD**  
 Men: XS - 2XL  
**YPBLC**



Women: XS - 2XL  
**YPAMD**  
 Men: XS - 2XL  
**YPAMC**

Polo Colors: black, white, black, red and blue.

PERMACHEF



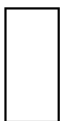


# ROUND NECK T-SHIRT

100% Cotton



Women: XS - 2XL  
YPNECRD  
Men: XS - 2XL  
YPNECRC



Women: XS - 2XL  
YPBLCRD  
Men: XS - 2XL  
YPBLCRC

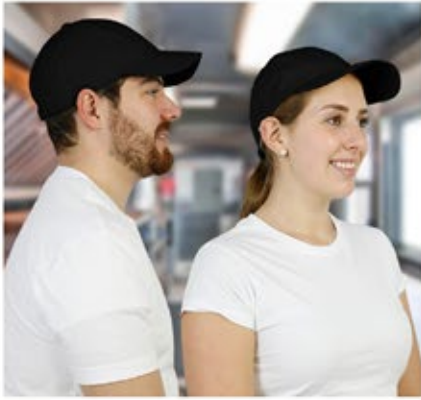


Women: XS - 2XL  
YPAMCRD  
Men: XS - 2XL  
YPAMCRC

Colors: black, white and blue navy.

PERMACHEF



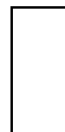


# GABARDINE CAP

100% cotton



Unisex: one size  
GOGANE



Unisex: one size  
GOGABL



Unisex: one size  
GOGARJ

Colors: black, white, grey, red, green and blue.

PERMACHEF





## MESH CAP

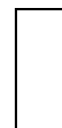
100% Polyester



Unisex: one size  
**GOMANE**



Unisex: one size  
**GOMAAM**



Unisex: one size  
**GOMABL**



Unisex: one size  
**GOMARJ**

Unisex and one size. Colors: black, white, blue and red.

PERMACHEF







# EXECUTIVE VEST

97% Polyester - 3% Spandex



Men: M - 3XL  
**CHAAMC**  
Women: XS - 3XL  
**CHAAMD**

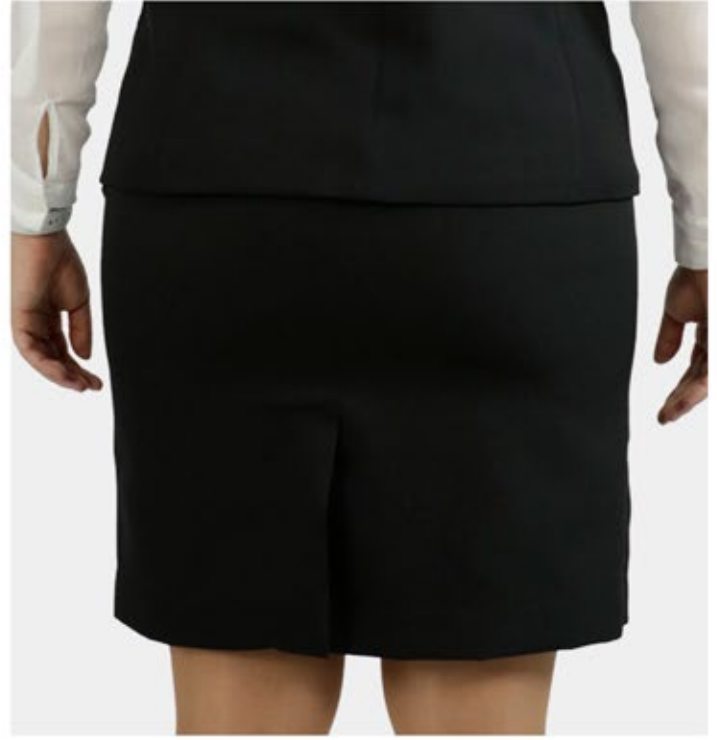


Men: M - 3XL  
**CHANE C**  
Women: XS - 3XL  
**CHANED**

Executive vest colors: Navy Blue and Black



**PERMACHEF**



## EXECUTIVE SKIRT

97% Polyester - 3% Spandex



Women: XS - 2XL  
**FVAMD**



Women: XS - 2XL  
**FVNED**

Executive Skirt, colors: Navy Blue and Black

PERMACHEF





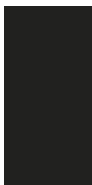
## EXECUTIVE JACKET

97% Polyester - 3% Spandex



Women: XS - 3XL  
**SACAMD**

Men: M - 3XL  
**SACAMC**



Women: XS - 3XL  
**SACNED**

Men: M - 3XL  
**SACENC**



Executive Jacket, colors: Navy Blue and Black



**PERMACHEF**



## EXECUTIVE PANTS

97% Polyester - 3% Spandex



Women: XS - 2XL  
**PAVAMD**

Men: XS - 2XL  
**PAVAMC**



Women: XS - 2XL  
**PAVNED**

Men: XS - 2XL  
**PAVNEC**

---

Executive Pants, colors: Navy Blue and Black

PERMACHEF





## DENIM VEST

98% Cotton - 02% Elastane



Women XS - 3XL  
**CHAMZD**



Men XS - 3XL - 5XL  
**CHAMZC**

Denim Vest, colors: Gray

# ACCESSORIES COLLECTION



Cause we all need accessories to look good, but mostly to work better, we have a huge variety of hoodies, neckerchiefs, handkerchiefs, hair nets, among others. find the ones you need to perform your daily tasks in a more comfortable way.



## CUISINE CHEF SHOES

100% Polyester

**MEN**  
ZCUNEC  
SIZE: 26 - 30

**WOMEN**  
ZCUNED  
SIZE: 23 - 27

The Cuisine Shoes by PermaChef are created to provide comfort and safety while you work. Combining technology and its non-slip design these shoes will help you to minimize the risk of accidental falls in the kitchen.



## ULTRALIGHT CHEF SHOES

100% Polyester

Ultralight

EVA (Ethylene Vinyl Acetate) and Rubber outsole

Women Size: 5 - 9  
ZCUNED

---

Enjoy hours of comfort with Ultralight Shoe by PermaChef. It features a cushioned shock absorbing footbed for those who have to stand up for several hours at a time due to their job and a slip resistant outsole that provides you a secure step in the kitchen.

A person is sitting on a modern wooden stool with a black metal base. They are wearing a black long-sleeved top and black pants with thin white vertical stripes. They are also wearing black slip-on shoes. The background is a blurred kitchen setting with white cabinets and a countertop.

## PERMACHEF

Need comfortable shoes? We have the right pair for you!

Our shoes feature a cushioned shock absorbing footbed for those who have to stand up for several hours at a time due to their job.

They are designed to provide comfort and safety while you work. Combining technology and its non-slip design, our PermaChef shoes will help you to minimize the risk of accidental falls in the kitchen.

**PERMACHEF**



PERMACHEF





**Neckerchief**

50% Polyester - 50% CottonT



Unisex: One size  
**PIBL**



Unisex: One size  
**PINE**



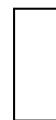
Unisex: One size  
**PIRJ**



Unisex: One size  
**PIVE**

**Handkerchief**

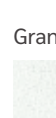
owel: 100% Cotton



Unisex: One size  
**CATOABL**



Unisex: One size  
**CATOANE**

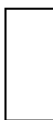


Granite: 100% Cotton

Unisex: One size  
**CABL**

**Hair Net**

95% Polyester - 3% Nylon - 2% Latex



Unisex: One size  
**REDBL**



Unisex: One size  
**REDNE**





PERMACHEF



## SPORT VEST

97% Polyester - 3% Spandex



Unisex: XS - 3XL  
**CHAINU**

---

Fluid resistant fabric. Color: black.

PERMACHEF



| CHEF MARILUZ CASADOS  
Puebla, Mexico



# HOODIES

50% Plush - 50% Cotton



Unisex: S - XL  
SAAMU



Unisex: S - XL  
SAVEU



Unisex: S - XL  
SAVIU

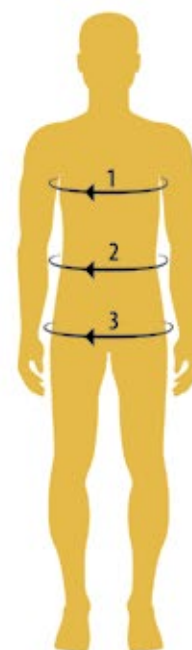
Long sleeve, a Kangaroo pocket provides convenient storage, drawcord hood offers adjustable coverage. The collection of PermaChef Hoodies is your go-to sweatshirt for all-day comfort, pullover styling makes on/off effortless.



# SIZE CHART

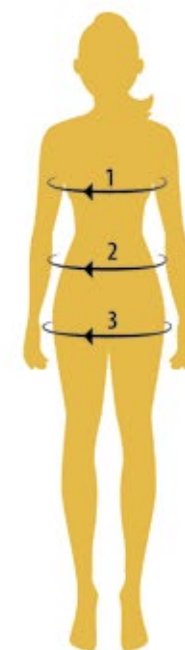
## SIZE CHART UNISEX / MEN'S CHEF COAT

SIZE	CHEST (1)	WAIST (2)	HIPS (3)
XXS (28)	35" (89 cm)	33" (84 cm)	35" (89 cm)
XS (30 - 32)	38" (97 cm)	36" (92 cm)	38" (97 cm)
S (34)	41" (104 cm)	39" (99 cm)	41" (104 cm)
M (36 - 38)	44" (112 cm)	42" (107 cm)	44" (112 cm)
L (40)	47" (120 cm)	45" (114 cm)	47" (120 cm)
XL (42 - 48)	50" (127 cm)	48" (122 cm)	50" (127 cm)
2XL (46)	53" (135 cm)	51" (130 cm)	53" (135 cm)
3XL (48 - 50)	56" (142 cm)	54" (137 cm)	56" (142 cm)
5XL (54 - 56)	62" (157 cm)	60" (152 cm)	62" (157 cm)



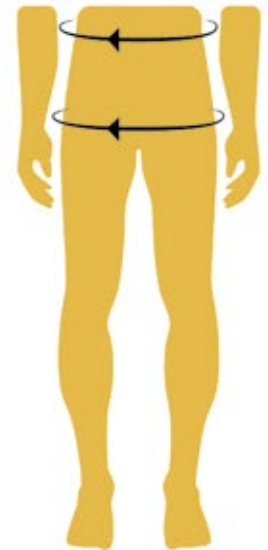
## SIZE CHART WOMEN'S CHEF COAT

SIZE	CHEST (1)	WAIST (2)	HIPS (3)
XXS (24/0)	31" (79 cm)	26" (66 cm)	34" (86 cm)
XS (26-28 / 3-5)	34" (87 cm)	29" (74 cm)	37" (94 cm)
S (30 - 32 / 7-9)	37" (94 cm)	32" (81 cm)	40" (102 cm)
M (34 - 36 / 11-13)	40" (102 cm)	35" (89 cm)	43" (109 cm)
L (38 / 15-17)	43" (109 cm)	38" (97 cm)	46" (117 cm)
XL (40 - 42 / 19-21)	46" (117 cm)	41" (104 cm)	49" (125 cm)
2XL (44 / 23-25)	49" (125 cm)	44" (112 cm)	52" (132 cm)
3XL (46/ 27-29)	52" (132 cm)	47" (120 cm)	55" (140 cm)



## SIZE CHART PANTS - UNISEX

SIZE	WAIST	HIPS	LONG
XXS (28)	27" (69 cm)	23 <sup>1/2</sup> " (85 cm)	42 <sup>1/2</sup> " (107 cm)
XS (30)	30" (76 cm)	36 <sup>1/2</sup> " (93 cm)	42 <sup>3/4</sup> " (108 cm)
S (32 - 34)	33" (84 cm)	39 <sup>1/2</sup> " (100 cm)	43" (109 cm)
M (36)	36" (92 cm)	42 <sup>1/2</sup> " (108 cm)	43 <sup>1/4</sup> " (110 cm)
L (38 - 40)	39" (99 cm)	45 <sup>1/2</sup> " (116 cm)	43 <sup>3/4</sup> " (111 cm)
XL (42)	42" (106 cm)	48 <sup>1/2</sup> " (123 cm)	44" (112 cm)
2XL (44 - 46)	45" (114 cm)	51 <sup>1/2</sup> " (131 cm)	44 <sup>1/4</sup> " (113 cm)
3XL (48 - 50)	48" (122 cm)	54 <sup>1/2</sup> " (138 cm)	44 <sup>3/4</sup> " (114 cm)
5XL (54 - 60)	54" (137 cm)	60 <sup>1/2</sup> " (154 cm)	45 <sup>1/4</sup> " (115 cm)



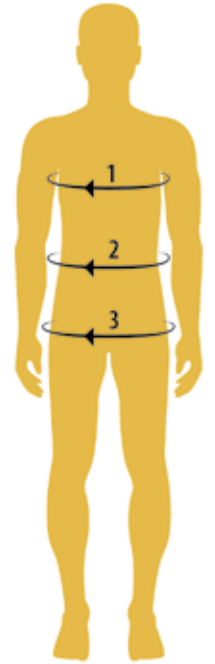
## SIZE CHART HOODIE

TALLA	ANCHO	LARGO
S	20 <sup>3/8</sup> " (50.8 cm)	23 <sup>5/8</sup> " (66.7 cm)
M	22 <sup>3/8</sup> " (55.9 cm)	27 <sup>5/8</sup> " (69.2 cm)
L	24 <sup>1/2</sup> " (61 cm)	28 <sup>3/4</sup> " (71.8 cm)
XL	26 <sup>1/2</sup> " (66 cm)	29 <sup>3/4</sup> " (74.3 cm)



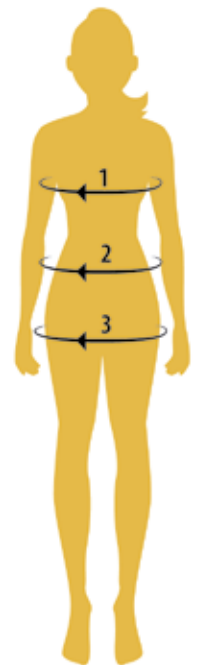
## PLUS SIZE CHART MEN'S EXTENDED SIZES CHEF COAT

SIZE	CHEST (1)	WAIST (2)	HIPS (3)
6XL	64" (161 cm)	63" (159 cm)	64" (161 cm)
7XL	67" (168 cm)	66" (166 cm)	67" (168 cm)
8XL	70" (175 cm)	69" (173 cm)	70" (175 cm)
9XL	73" (182 cm)	72" (180 cm)	73" (182 cm)
10XL	76" (189 cm)	75" (187 cm)	76" (189 cm)



## PLUS SIZE CHART WOMEN'S EXTENDED SIZES CHEF COAT

SIZE	CHEST (1)	WAIST (2)	HIPS (3)
4XL	54" (136 cm)	50" (127 cm)	57" (144 cm)
5XL	57" (143 cm)	53" (134 cm)	60" (151 cm)
6XL	60" (150 cm)	56" (141 cm)	63" (158 cm)
7XL	63" (158 cm)	59" (148 cm)	66" (165 cm)
8XL	66" (165 cm)	62" (155 cm)	69" (172 cm)
9XL	69" (172 cm)	65" (162 cm)	72" (179 cm)
10XL	72" (179 cm)	68" (169 cm)	75" (186 cm)





## SIZE CHART MEN'S DREES SHIRT

SIZE	CHEST	LONG
S	21 <sup>1/2</sup> " (54.6 cm)	29" (73.3 cm)
M	22 <sup>1/2</sup> " (55.2 cm)	30" (75.9 cm)
L	23 <sup>1/2</sup> " (59.7 cm)	31 <sup>3/8</sup> " (79.7 cm)
XL	25" (63.5 cm)	32 <sup>3/8</sup> " (82.2 cm)
2XL	26" (66 cm)	33 <sup>3/8</sup> " (84.8 cm)



## SIZE CHART WOMEN'S DREES SHIRT

SIZE	CHEST	WAIST
S	19" (48.3 cm)	16 <sup>1/2</sup> " (41.9 cm)
M	20" (50.8 cm)	17 <sup>1/2</sup> " (44.5 cm)
L	21" (53.3 cm)	18 <sup>1/2</sup> " (47 cm)
XL	22" (55.9 cm)	19 <sup>1/2</sup> " (49.5 cm)
2XL	23" (58.4 cm)	20 <sup>1/2</sup> " (52.1 cm)

SIZE	HIPS	LONG
S	19" (48.3 cm)	25" (63.5 cm)
M	20" (50.8 cm)	25 <sup>1/2</sup> " (64.8 cm)
L	21" (53.3 cm)	26" (66 cm)
XL	22" (55.9 cm)	26 <sup>1/2</sup> " (67.3 cm)
2XL	23" (58.4 cm)	27" (68.6 cm)



# HOW TO FIND YOUR SIZE?

## **1. CHEST (MEN)**

Using a cloth measuring tape, measure from the fullest part of the chest with your arms down

## **1. CHEST (WOMEN)**

Using a cloth measuring tape, measure from the fullest part of the bust with your arms down.

## **2. WAIST**

Using a cloth measuring tape, measure around your waist at its most narrow point.

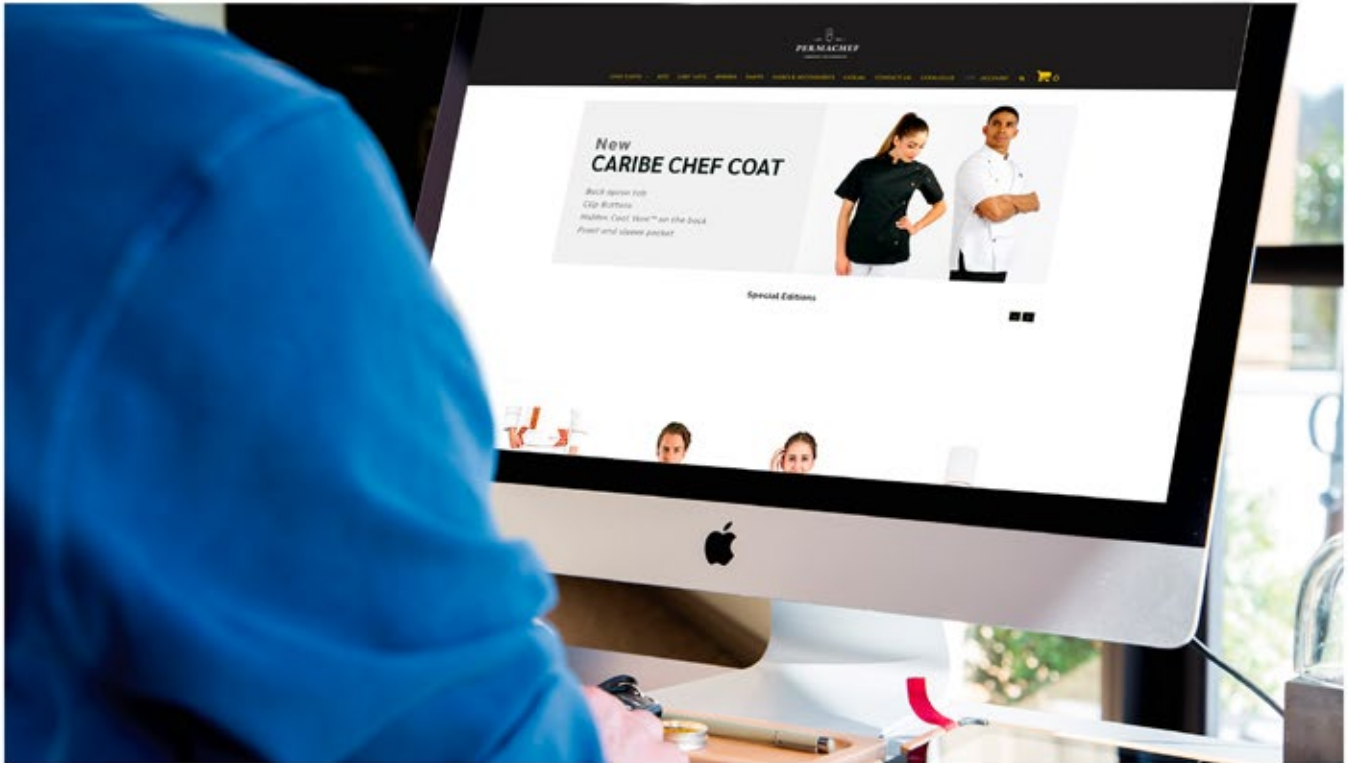
## **3. HIPS**

Using a cloth measuring tape, stand with your heels together and measure the fullest part of your hips.

Are you in a dilemma because you are just between two sizes?  
You choose! If you like tight clothes choose the smaller one. If you like hung clothes, choose the larger one.



# CONTACT



MÉXICO

[tiendaenlinea@permachef.com](mailto:tiendaenlinea@permachef.com)  
(222) 245 68 78 EXT. 115 - (222) 245 68 24

COFIAS DE MÉXICO S.A DE C.V / Av. Del Bosque 6146  
Col. Bugambilias, C.P. 72580 Puebla, Pue. México.  
[www.permachef.com](http://www.permachef.com)



ESTADOS  
UNIDOS

[sales@permachefusa.com](mailto:sales@permachefusa.com)  
512 212 7888  
203 South Saint Mary's ST. Suite 160  
78205 San Antonio Texas.  
[www.permachefusa.com](http://www.permachefusa.com)



ESPAÑA

[jmral@permachef.com](mailto:jmral@permachef.com)  
619 74 71 51  
[www.permachef.es](http://www.permachef.es)

• EST  1921 •

# PERMACHEF

DRESSING YOUR PASSION



*@permachefusa*



*@permachef\_usa*



*@permachef*



*/permachef*



*@permachef\_oficial*

*Follow us for more information, new products,  
promotions and special discounts*



# PERMACHEF

DRESSING YOUR PASSION



[www.permachef.com](http://www.permachef.com)

[www.permachefusa.com](http://www.permachefusa.com)

[www.permachef.es](http://www.permachef.es)