

# Raquel Welch Tru2Life® Colors (Signature and Transformations)



Each color is made up of 7-11 different shades, resulting in a natural look that blends with anyone's hair color! Heat-friendly Tru2Life fiber can be flat ironed, curled or blown out.



Shadow Shades Darker color depth at the root.



Pictured colors may vary slightly from the actual color.

## Raquel Welch® Color Rings

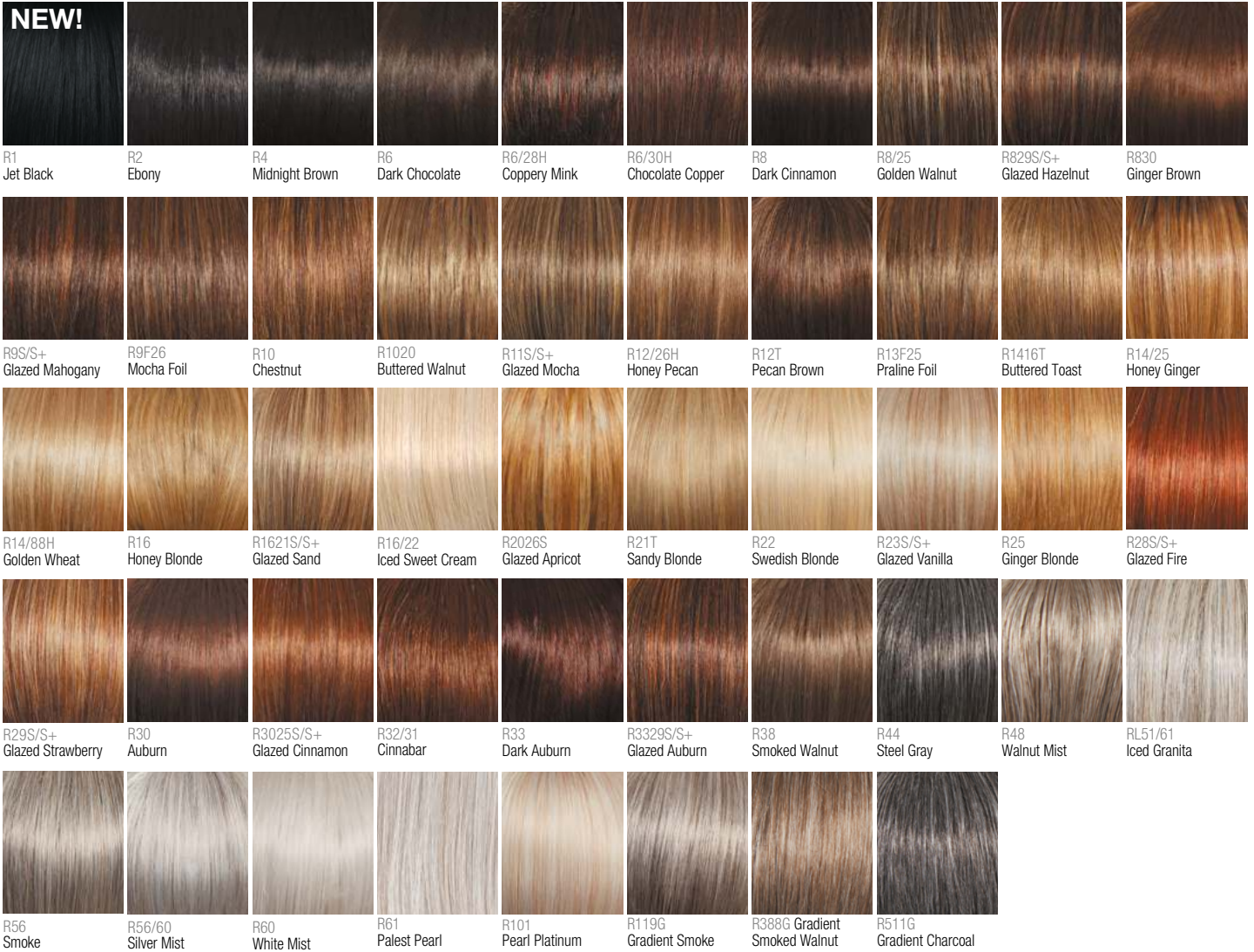
Take the guessing out of choosing the correct color for your client with the Raquel Welch® Color rings, available in four versions.



# Raquel Welch Kanekalon Vibralite® Colors (*Signature and Transformations*)



All "S/S+" multi-dimensional blends reflect the latest coloring techniques being used in top salons around the country. "S" colors are specially blended in the front and crown with highlights and lowlights that complement the basic color, whereas "S+" colors are specially blended throughout the style with highlights and lowlights that complement the basic color.



## Shadow Shades® Darker color depth at the root.



## 100% Human Hair Color Levels (*Black Label and Transformations*)



R1HH Black    R3HH Dark Brown    R4HH Chestnut Brown    R5HH Light Reddish Brown    R6HH Medium Auburn    R7HH Strawberry Blonde    R8HH Golden Blonde    R9HH Light Golden Blonde    R10HH Palest Blonde

## 100% Human Hair Pre-Dyed Salon-Inspired Colors (*Black Label and Transformations*)

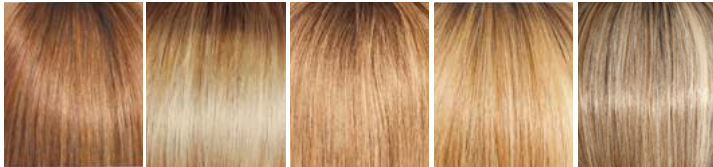


R4 Midnight Brown    R6 Dark Chocolate    R6/30H Chocolate Copper    R8 Dark Cinnamon    R829S/S+ Glazed Hazelnut    R830 Ginger Brown    R9S Glazed Mahogany    R10 Chestnut    R1020 Buttered Walnut    R11S/S+ Glazed Mocha    R12/26H Honey Pecan



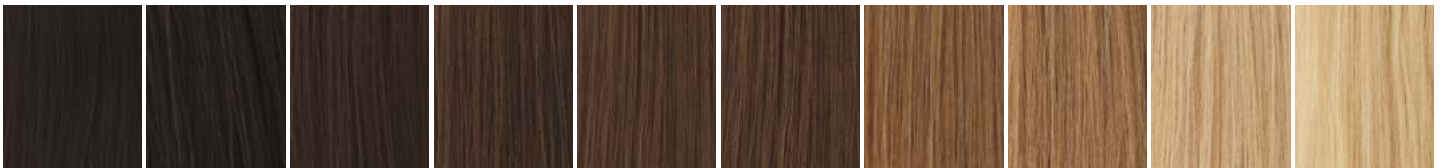
R12T Pecan Brown    R1416T Buttered Toast    R14/88H Golden Wheat    R14/25 Honey Ginger    R1621S/S+ Glazed Sand    R25 Ginger Blonde    R28S Glazed Fire    R29S/S+ Glazed Strawberry    R130 Dark Copper    R135 Sparkling Sherry    R3025S/S+ Glazed Cinnamon

### Shadow Shades® Darker color depth at the root.



SS12/22 SS Cappuccino    SS14/22 SS Shaded Wheat    SS14/25 SS Honey Ginger    SS14/88 SS Golden Wheat    SS19/23 SS Biscuit

## 100% Eastern European Human Hair Colors (*Black Label*)



BL1 Darkest Brown    BL2 Medium Dark Brown    BL3 Chestnut Brown    BL4 Medium Red Brown    BL5 Reddish Brown    BL6 Light Golden Brown    BL7 Strawberry Blonde    BL8 Golden Blonde    BL9 Light Golden Blonde    BL10 Palest Blonde

## 100% Remy Human Hair Pre-Dyed Salon-Inspired Colors (*Couture and Transformations*)

Certified Authentic™ 100% Remy Hair is the finest quality human hair available. With this unprocessed human hair, cuticles are carefully kept intact, preserving the hair's unidirectional alignment resulting in a completely natural appearance.



R2/31 Cocoa    R4 Midnight Brown    R6/30H Chocolate Copper    R829S+ Glazed Hazelnut    R10 Chestnut    R14/25 Honey Ginger    R14/88H Golden Wheat    R25 Ginger Blonde



### Shadow Shades® Darker color depth at the root.



R29S+ Glazed Strawberry    R3025S+ Glazed Cinnamon    SS8/29 SS Hazelnut    SS12/22 SS Cappuccino    SS14/88 SS Golden Wheat    SS26 SS Chardonnay

Pictured colors may vary slightly from the actual color.