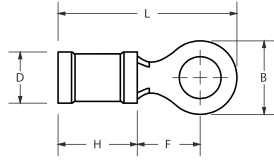


Ring Terminals

Vinyl Insulated, Tin-Plated Copper



Technical Data

Body Material: Pure Copper (Tin-Plated)
 Insulation Material: Vinyl
 Temperature Range: Up to +221°F
 Insulation Colors: Red, Blue, Yellow

**Nylon insulation available upon request

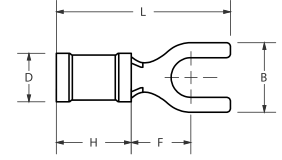


Part No.	Wire Size		Insulation Color	Stud Size	Dimensions (in)					
	AWG	mm ²			B	L	F	H	D	
RING-2218-4-VNL			Red	4	0.224	0.701	0.195	0.394	0.169	
RING-2218-6-VNL				6	0.224	0.701	0.195	0.394	0.169	
RING-2218-6A-VNL				6	0.260	0.791	0.248	0.394	0.169	
RING-2218-6B-VNL				6	0.315	0.846	0.276	0.394	0.169	
RING-2218-8-VNL				8	0.260	0.791	0.248	0.394	0.169	
RING-2218-8A-VNL				8	0.315	0.846	0.276	0.394	0.169	
RING-2218-10-VNL				10	0.315	0.846	0.276	0.394	0.169	
RING-2218-10A-VNL				10	0.386	0.906	0.335	0.394	0.169	
RING-2218-1/4-VNL				1/4"	0.386	0.906	0.335	0.394	0.169	
RING-2218-1/4A-VNL				1/4"	0.457	1.083	0.437	0.394	0.169	
RING-2218-5/16-VNL				5/16"	0.457	1.083	0.437	0.394	0.169	
RING-2218-3/8-VNL				3/8"	0.535	1.244	0.547	0.394	0.169	
RING-2218-1/2-VNL				1/2"	0.756	1.417	0.650	0.394	0.169	
RING-1614-4-VNL				Blue	4	0.260	0.701	0.169	0.394	0.193
RING-1614-6-VNL					6	0.260	0.701	0.169	0.394	0.193
RING-1614-6A-VNL					6	0.260	0.787	0.256	0.394	0.193
RING-1614-6B-VNL					6	0.335	0.886	0.305	0.394	0.193
RING-1614-8-VNL					8	0.260	0.787	0.256	0.394	0.193
RING-1614-8A-VNL			8		0.335	0.886	0.305	0.394	0.193	
RING-1614-10-VNL			10		0.335	0.886	0.305	0.394	0.193	
RING-1614-10A-VNL			10		0.374	0.886	0.285	0.394	0.193	
RING-1614-1/4-VNL			1/4"		0.472	1.087	0.433	0.394	0.193	
RING-1614-5/16-VNL			5/16"		0.472	1.087	0.433	0.394	0.193	
RING-1614-3/8-VNL			3/8"		0.575	1.228	0.547	0.394	0.193	
RING-1614-1/2-VNL			1/2"		0.756	1.437	0.650	0.394	0.193	
RING-1412-8-VNL			Black	8	0.315	0.965	0.303	0.512	0.244	
RING-1412-10-VNL				10	0.315	0.965	0.303	0.512	0.244	
RING-1412-10A-VNL				10	0.472	1.098	0.303	0.512	0.244	
RING-1412-1/4-VNL				1/4"	0.472	1.098	0.303	0.512	0.244	
RING-1412-5/16-VNL				5/16"	0.591	1.339	0.551	0.512	0.244	
RING-1412-3/8-VNL				3/8"	0.591	1.339	0.551	0.512	0.244	
RING-1210-4-VNL			Yellow	4	0.283	0.843	0.232	0.512	0.264	
RING-1210-6-VNL				6	0.283	0.843	0.232	0.512	0.264	
RING-1210-8-VNL				8	0.283	0.843	0.232	0.512	0.264	
RING-1210-8A-VNL				8	0.374	1.004	0.327	0.512	0.264	
RING-1210-10-VNL				10	0.374	1.004	0.327	0.512	0.264	
RING-1210-1/4-VNL				1/4"	0.472	1.240	0.512	0.512	0.264	
RING-1210-5/16-VNL				5/16"	0.591	1.327	0.539	0.512	0.264	
RING-1210-3/8-VNL				3/8"	0.591	1.327	0.539	0.512	0.264	
RING-1210-1/2-VNL				1/2"	0.756	1.500	0.630	0.512	0.264	

(+) STANDARD STOCK ITEM

Fork Terminals

Vinyl Insulated, Tin-Plated Copper



Technical Data

Body Material: Pure Copper (Tin-Plated)
 Insulation Material: Vinyl
 Temperature Range: Up to +221°F
 Insulation Colors: Red, Blue, Yellow

**Nylon insulation available upon request

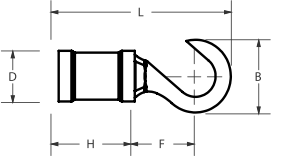


Part No.	Wire Size		Insulation Color	Stud Size	Dimensions (in)					
	AWG	mm ²			B	L	F	E	D	
FORK-2218-4-VNL			Red	4	0.224	0.835	0.256	0.394	0.169	
FORK-2218-6-VNL				6	0.224	0.835	0.256	0.394	0.169	
FORK-2218-6A-VNL				6	0.252	0.835	0.256	0.394	0.169	
FORK-2218-8-VNL				8	0.252	0.835	0.256	0.394	0.169	
FORK-2218-8A-VNL				8	0.283	0.835	0.256	0.394	0.169	
FORK-2218-8B-VNL				8	0.319	0.835	0.256	0.394	0.169	
FORK-2218-10-VNL				10	0.319	0.835	0.256	0.394	0.169	
FORK-2218-10A-VNL				10	0.374	0.835	0.256	0.394	0.169	
FORK-2218-1/4-VNL				1/4"	0.374	0.835	0.256	0.394	0.169	
FORK-2218-1/4A-VNL				1/4"	0.472	1.071	0.433	0.394	0.169	
FORK-1614-4-VNL				Blue	4	0.224	0.835	0.256	0.394	0.193
FORK-1614-6-VNL					6	0.224	0.835	0.256	0.394	0.193
FORK-1614-6A-VNL			6		0.244	0.835	0.256	0.394	0.193	
FORK-1614-8-VNL			8		0.252	0.835	0.256	0.394	0.193	
FORK-1614-8A-VNL			8		0.283	0.835	0.256	0.394	0.193	
FORK-1614-8B-VNL			8		0.319	0.835	0.256	0.394	0.193	
FORK-1614-10-VNL			10		0.319	0.835	0.256	0.394	0.193	
FORK-1614-10A-VNL			10		0.374	0.835	0.256	0.394	0.193	
FORK-1614-1/4-VNL			1/4"		0.374	0.835	0.256	0.394	0.193	
FORK-1614-1/4A-VNL			1/4"		0.472	1.071	0.433	0.394	0.193	
FORK-1412-4-VNL			Black	4	0.224	0.976	0.276	0.512	0.244	
FORK-1412-8-VNL				8	0.283	0.976	0.276	0.512	0.244	
FORK-1412-8A-VNL				8	0.315	0.976	0.276	0.512	0.244	
FORK-1412-10-VNL				10	0.315	0.976	0.276	0.512	0.244	
FORK-1412-1/4-VNL			1/4"	0.472	1.102	0.476	0.512	0.244		
FORK-1210-6-VNL			Yellow	6	0.283	0.945	0.295	0.512	0.264	
FORK-1210-8-VNL				8	0.327	0.992	0.295	0.512	0.264	
FORK-1210-8A-VNL				8	0.354	0.992	0.295	0.512	0.264	
FORK-1210-10-VNL				10	0.354	0.992	0.295	0.512	0.264	
FORK-1210-1/4-VNL				1/4"	0.354	0.992	0.295	0.512	0.264	
FORK-1210-1/4A-VNL				1/4"	0.472	1.228	0.472	0.512	0.264	
FORK-1210-5/16-VNL				5/16"	0.551	1.181	0.453	0.512	0.264	

(+) STANDARD STOCK ITEM

Hook Terminals

Vinyl Insulated, Tin-Plated Copper



Technical Data

Body Material: Pure Copper (Tin-Plated)
 Insulation Material: Vinyl
 Temperature Range: Up to +221°F
 Insulation Colors: Red, Blue, Yellow



Part No.	Wire Size		Insulation Color	Stud Size	Dimensions (in)				
	AWG	mm ²			B	L	F	E	D
HOOK-2218-8-VNL			Red	8	0.315	0.866	0.276	0.453	0.157
HOOK-2218-10-VNL				10	0.315	0.866	0.276	0.453	0.157
HOOK-1614-8-VNL			Blue	8	0.335	0.925	0.287	0.453	0.177
HOOK-1614-10-VNL				10	0.374	0.945	0.287	0.453	0.177
HOOK-1210-8-VNL			Yellow	8	0.374	1.122	0.305	0.610	0.256
HOOK-1210-10-VNL				10	0.374	1.122	0.305	0.610	0.256

(+) STANDARD STOCK ITEM