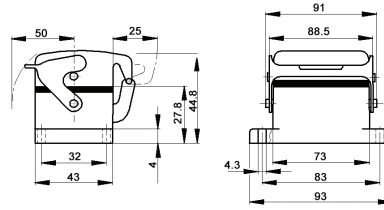
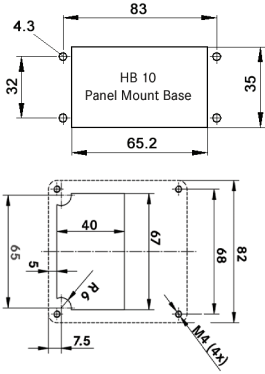


# EPIC® HB 10 Panel Mount Bases

## Single Lever

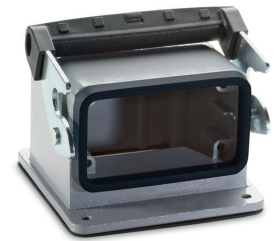
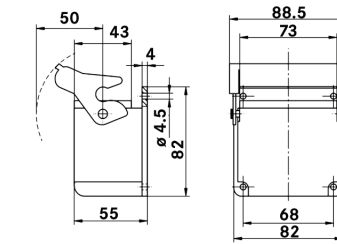


All dimensions are in mm.

HB 10 Right Angle Panel Mount Base

Technical Data	
Specifications:	DIN 43652
Temperature Range:	-40°C to +125°C
Protection Class:	NEMA 4, NEMA 12, IP65
Material:	Powder-coated aluminum alloy

Description	Part Number
Panel Mount Base	10032900
Panel Mount Base with Dust Cover	10033900
Right-Angle Panel Mount Base	44423026



**Complete the Installation**



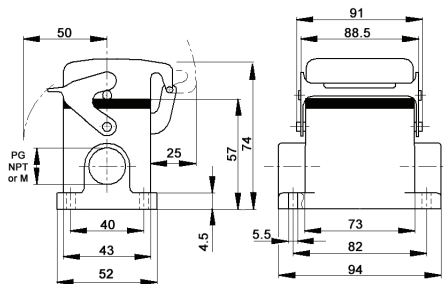
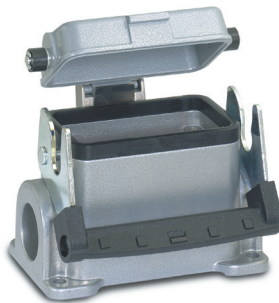
HB Dust Covers:  
page 415

**Approvals**

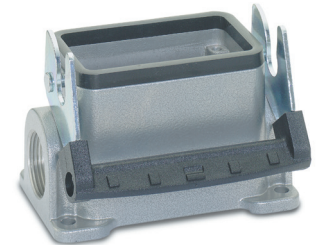


# EPIC® HB 10 Surface Mount Bases

## Single Lever



All dimensions are in mm.



Technical Data			
Specifications:	DIN 43652	Protection Class:	NEMA 4, NEMA 12, IP65
Temperature Range:	-40°C to +125°C	Material:	Powder-coated aluminum alloy

PG	Size of Entry		PG	Part Number			Complete the Installation: SKINTOP® Strain Relief, page 368			
	NPT	Metric		NPT	Metric	Metric	PG Nylon	PG Metal	Metric Nylon	Metric Metal
<b>2 Entries</b>										
16	1/2"	20	100359	100359NP	19035900	53015040	52015740	53111020	53112020	
—	—	25	—	—	79061600	—	—	5311030	53112030	
<b>1 Entry</b>										
16	1/2"	20	100349	100349NP	19034900	53015040	52015740	53111020	53112020	
21	3/4"	25	100347	100347NP	19034700	53015050	52015750	53111030	53112030	
<b>2 Entries with Dust Cover</b>										
16	1/2"	20	100389	100389NP	19038900	53015040	52015740	5311020	53112020	
<b>1 Entry with Dust Cover</b>										
16	1/2"	20	100369	100369NP	19036900	53015040	52015740	53111020	53112020	
—	—	25	—	—	79064600	—	—	53111030	53112030	

**Approvals**



**Complete the Installation**

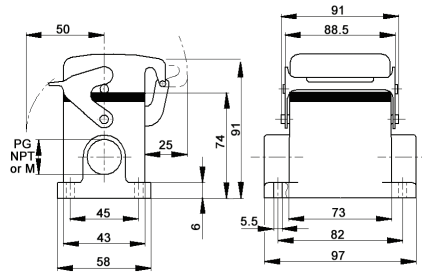
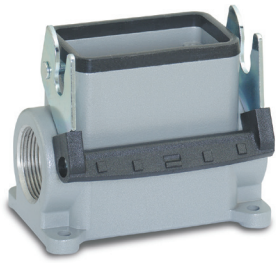


HB Dust Covers:  
page 415

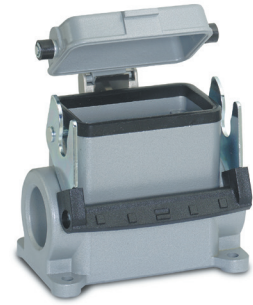
Photographs are not to scale and are not true representations of the products in question. For current information go to our website. If not otherwise specified, all values relating to the product are nominal values.

# EPIC® HB 10 High Profile Surface Mount Bases

## Single Lever



All dimensions are in mm.



### Technical Data

<b>Specifications:</b>	DIN 43652	<b>Protection Class:</b>	NEMA 4, NEMA 12, IP65
<b>Temperature Range:</b>	-40°C to +125°C	<b>Material:</b>	Powder-coated aluminum alloy

PG	Size of Entry		PG	Part Number		Complete the Installation: SKINTOP® Strain Relief, page 368			
	NPT	Metric		NPT	Metric	PG Nylon	PG Metal	Metric Nylon	Metric Metal
<b>2 Entries</b>									
21	3/4"	25	700612	700612NP	79061200	53015050	52015750	53111030	53112030
29	1"	32	700614	700614NP	79061400	53015060	52015760	53111040	53112040
<b>1 Entry</b>									
21	3/4"	25	700602	700602NP	79060200	53015050	52015750	53111030	53112030
29	1"	32	700604R	700604NP	79060400	53015060	52015760	53111040	53112040
<b>2 Entries with Dust Cover</b>									
21	3/4"	25	700652	700652NP	79065200	53015050	52015750	53111030	53112030
29	1"	32	700654	700654NP	79065400	53015060	52015760	53111040	53112040
<b>1 Entry with Dust Cover</b>									
21	3/4"	25	700642	700642NP	79064200	53015050	52015750	53111030	53112030
29	1"	32	700644	700644NP	79064400	53015060	52015760	53111040	53112040

### Approvals



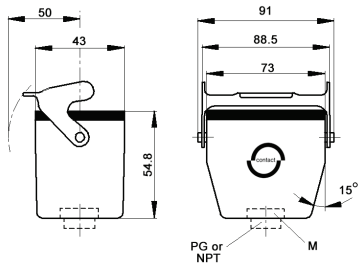
### Complete the Installation



HB Dust Covers:  
page 415

# EPIC® HB 10 Cable Coupler Hoods

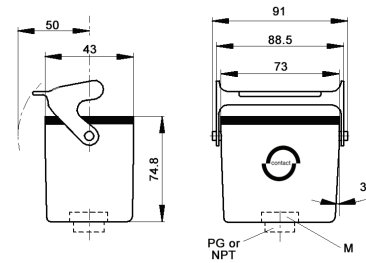
## Single Lever



Standard Profile



All dimensions are in mm.



High Profile

### Technical Data

<b>Specifications:</b>	DIN 43652	<b>Protection Class:</b>	NEMA 4, NEMA 12, IP65
<b>Temperature Range:</b>	-40°C to +125°C	<b>Material:</b>	Powder-coated aluminum alloy

PG	Size of Entry		PG	Part Number		Complete the Installation: SKINTOP® Strain Relief, page 368			
	NPT	Metric		NPT	Metric*	PG Nylon	PG Metal	Metric Nylon	Metric Metal
<b>Standard Profile</b>									
16	1/2"	20	100469	100469NP	19046900	53015040	52015740	53111020	53112030
21	3/4"	25	700422	700422NP	79042200	53015050	52015750	53111030	53112030
<b>High Profile</b>									
21	3/4"	25	700424	700424NP	79042400	53015050	52015750	53111030	53112030
29	1"	32	700426	700426NP	79042600	53015060	52015760	53111040	53112040

\* Metric hoods do not come with a neck.

### Approvals



### Complete the Installation



HB Dust Covers:  
page 415

Photographs are not to scale and are not true representations of the products in question. For current information go to our website. If not otherwise specified, all values relating to the product are nominal values.