

Han E 16 POS. M INSERT CRIMP

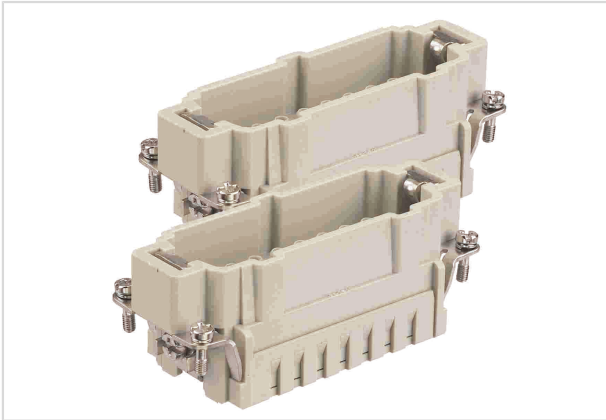


Image is for illustration purposes only. Please refer to product description.

Part number	09 33 016 2612
Specification	Han E 16 POS. M INSERT CRIMP
HARTING eCatalogue	https://b2b.harting.com/09330162612

Identification

Category	Inserts
Series	Han E [®]
Specification	Continuing marking

Version

Termination method	Crimp termination
Gender	Male
Size	32 B
Number of contacts	32
PE contact	Yes
Contact identification	17 ... 32
Details	Please order crimp contacts separately. You need two inserts for a complete assembly!

Technical characteristics

Conductor cross-section	0.14 ... 4 mm ²
Conductor cross-section	AWG 26 ... AWG 12
Rated current	16 A
Rated voltage	500 V
Rated impulse voltage	6 kV
Pollution degree	3
Rated voltage acc. to UL	600 V
Rated voltage acc. to CSA	600 V



Pushing Performance

Technical characteristics

Insulation resistance	$>10^{10} \Omega$
Limiting temperature	-40 ... +125 °C
Mating cycles	≥ 500

Material properties

Material (insert)	Polycarbonate (PC)
Colour (insert)	RAL 7032 (pebble grey)
Material flammability class acc. to UL 94	V-0
RoHS	compliant
ELV status	compliant
China RoHS	e
REACH Annex XVII substances	No
REACH ANNEX XIV substances	No
REACH SVHC substances	No

Specifications and approvals

Specifications	EN 60664-1 IEC 61984
Approvals	DNV GL
UL / CSA	UL 1977 ECBT2.E235076 UL 2237 PVVA2.E318390 CSA-C22.2 No. 182.3 PVVA8.E318390

Commercial data

Packaging size	1
Net weight	56.54 g
Country of origin	Germany
European customs tariff number	85366990
eCl@ss	27440205 Contact insert for industrial connectors