

Han ESS 06 Pos. F Insert Double Cage Cla

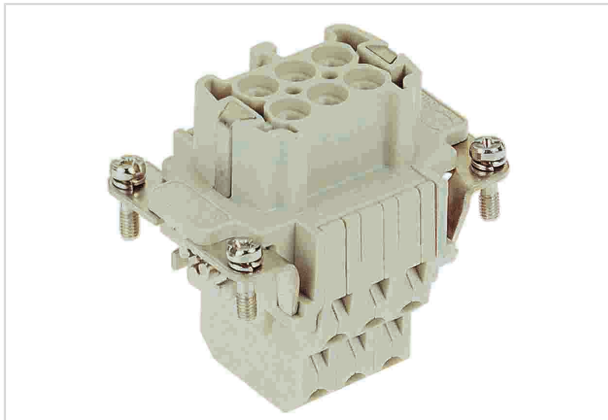


Image is for illustration purposes only. Please refer to product description.

Part number	09 33 006 2772
Specification	Han ESS 06 Pos. F Insert Double Cage Cla
HARTING eCatalogue	https://b2b.harting.com/09330062772

Identification

Category	Inserts
Series	Han [®] ESS

Version

Termination method	Cage-clamp termination
Gender	Female
Size	6 B
Number of contacts	6
PE contact	Yes
Details	two terminations per contact for hoods/housings high construction only

Technical characteristics

Conductor cross-section	0.14 ... 2.5 mm ²
Conductor cross-section	AWG 26 ... AWG 14
Rated current	16 A
Rated voltage	500 V
Rated impulse voltage	6 kV
Pollution degree	3
Rated voltage acc. to UL	600 V
Rated voltage acc. to CSA	600 V
Insulation resistance	>10 ¹⁰ Ω
Contact resistance	≤3 mΩ



Pushing Performance

Technical characteristics

Limiting temperature	-40 ... +125 °C
Stripping length	9 ... 11 mm
Mating cycles	≥500

Material properties

Material (insert)	Polycarbonate (PC)
Colour (insert)	RAL 7032 (pebble grey)
Material (contacts)	Copper alloy
Surface (contacts)	Silver plated
Material flammability class acc. to UL 94	V-0
RoHS	compliant with exemption
RoHS exemptions	6(c): Copper alloy containing up to 4 % lead by weight
ELV status	compliant with exemption
China RoHS	50
REACH Annex XVII substances	No
REACH ANNEX XIV substances	No
REACH SVHC substances	Yes
REACH SVHC substances	Lead

Specifications and approvals

Specifications	EN 60664-1 IEC 61984
Approvals	DNV GL
UL / CSA	UL 1977 ECBT2.E235076 CSA-C22.2 No. 182.3 ECBT8.E235076

Commercial data

Packaging size	1
Net weight	64.36 g
Country of origin	Romania
European customs tariff number	85366990
eCl@ss	27440205 Contact insert for industrial connectors