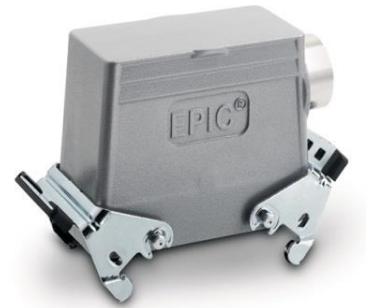




DATA SHEET	79057200
EPIC[®] H-B 10 TSBH	Valid from: 27.07.2015

Description

- The smallest housing with single and double lever.
- The right housing is available for every application.



General Characteristics

Series	H-B 10
Version	Hood M25
Locking	Double lever
Cable gland	No
Cable entry	Side
Protection	IP 65(latched)
Temperature Range	-40°C to +100°C, short term up to +125°C

Materials and Surfaces

Housing	powder-coated aluminium alloy, grey
Bolt	Zinc-plated steel
Lever	Zinc-plated steel

Approvals

VDE-Approval, VDE-REG.-Nr.	B437
----------------------------	------

Standard

Product Standard	IEC 61984
------------------	-----------

Creator: MANU2/PDP Released: IVSE1/PDP	Document: DB79057200EN Version: 00	Page 1 of 2
---	---------------------------------------	-------------

We reserve all rights according to DIN ISO 16016.



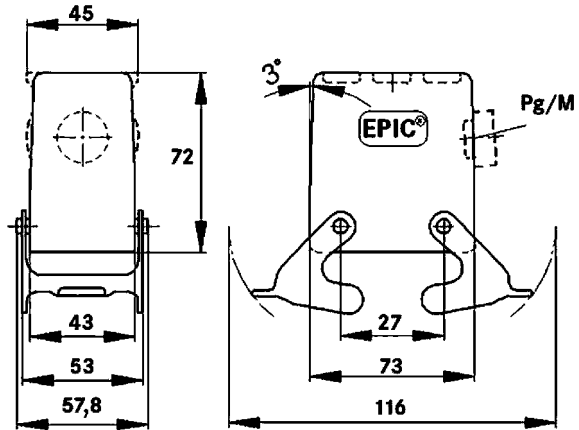
DATA SHEET

79057200

EPIC[®] H-B 10 TSBH

Valid from:
27.07.2015

Technical Drawings



Automation



Industrial machinery and plant engineering



Mechanical resistance



Robust



Waterproof

Info

Universal, robust metal housings size H-B 10

Application range

Plant engineering
Light & sound technology
Plastics industry

Remark

Photographs are not to scale and do not represent detailed images of the respective products.

Creator: MANU2/PDP Released: IVSE1/PDP	Document: DB79057200EN Version: 00	Page 2 of 2
---	---------------------------------------	-------------

We reserve all rights according to DIN ISO 16016.