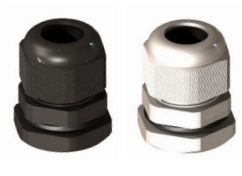
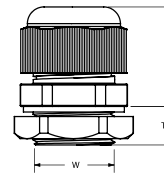


Technical Data

Body Material:	Halogen Free Nylon 66 (Polyamide 66, PA66)
Gasket Material:	Neoprene
Temperature Range:	-68°F to +212°F
Color:	Light Grey (RAL7035), Black (RAL9005)
Protection Grade:	IP 68



PG Standard Thread Length								Metric Standard Thread Length							
Part No.	Color (XXX)	Thread Size	Cable Ø Range		Dimensions (in)			Part No.	Color (XXX)	Thread Size	Cable Ø Range		Dimensions (in)		
			(in)	(mm)	H	TL	W				(in)	(mm)	H	TL	W
CG-PG7-XXX CG-PG7-1-XXX	GRY, BLK	PG7	0.118 - 0.256 0.079 - 0.197	3 - 6.5 2 - 5	0.866 0.866	0.315 0.315	0.492 0.492	CG-M12-XXX CG-M12-1-XXX	GRY, BLK	M12	0.118 - 0.256 0.079 - 0.197	3 - 6.5 2 - 5	0.866 0.866	0.315 0.315	0.472 0.472
CG-PG9-XXX CG-PG9-1-XXX	GRY, BLK	PG9	0.157 - 0.315 0.079 - 0.236	4 - 8 2 - 6	1.024 1.024	0.315 0.315	0.598 0.598	CG-M14-XXX CG-M14-1-XXX	GRY, BLK	M14	0.157 - 0.315 0.079 - 0.236	4 - 8 2 - 6	1.024 1.024	0.315 0.315	0.551 0.551
• CG-PG11-XXX CG-PG11-1-XXX	GRY, BLK	PG11	0.157 - 0.394 0.118 - 0.276	5 - 10 3 - 7	1.063 1.063	0.315 0.315	0.732 0.732	• CG-M16-XXX CG-M16-1-XXX	GRY, BLK	M16	0.157 - 0.315 0.079 - 0.236	4 - 8 2 - 6	1.024 1.024	0.315 0.315	0.630 0.630
• CG-PG13-XXX CG-PG13-1-XXX	GRY, BLK	PG13	0.236 - 0.472 0.197 - 0.354	6 - 12 5 - 9	1.102 1.102	0.354 0.354	0.803 0.803	CG-M18-XXX CG-M18-1-XXX	GRY, BLK	M18	0.197 - 0.394 0.118 - 0.276	5 - 10 3 - 7	1.063 1.063	0.315 0.315	0.709 0.709
• CG-PG16-XXX CG-PG16-1-XXX	GRY, BLK	PG16	0.394 - 0.551 0.275 - 0.472	10 - 14 7 - 12	1.181 1.181	0.394 0.394	0.886 0.886	• CG-M20-XXX CG-M20-1-XXX	GRY, BLK	M20	0.236 - 0.472 0.197 - 0.354	6 - 12 5 - 9	1.102 1.102	0.354 0.354	0.787 0.787
• CG-PG21-XXX CG-PG21-1-XXX	GRY, BLK	PG21	0.512 - 0.709 0.354 - 0.630	13 - 18 9 - 16	1.378 1.378	0.394 0.394	1.114 1.114	• CG-M25-XXX CG-M25-1-XXX	GRY, BLK	M25	0.512 - 0.709 0.354 - 0.630	13 - 18 9 - 16	1.378 1.378	0.394 0.394	0.984 0.984
• CG-PG29-XXX CG-PG29-1-XXX	GRY, BLK	PG29	0.705 - 0.984 0.512 - 0.787	18 - 25 13 - 20	1.575 1.575	0.472 0.472	1.457 1.457	• CG-M32-XXX CG-M32-1-XXX	GRY, BLK	M32	0.709 - 0.984 0.512 - 0.787	18 - 25 13 - 20	1.339 1.339	0.433 0.433	1.260 1.260
CG-PG36-XXX CG-PG36-1-XXX	GRY, BLK	PG36	0.866 - 1.260 0.787 - 1.024	22 - 32 20 - 26	1.890 1.890	0.551 0.551	1.850 1.850	CG-M40-XXX CG-M40-1-XXX	GRY, BLK	M40	0.866 - 1.260 0.787 - 1.024	22 - 32 20 - 26	1.890 1.890	0.551 0.551	1.575 1.575
CG-PG42-XXX CG-PG42-1-XXX	GRY, BLK	PG42	1.260 - 1.496 0.984 - 1.220	32 - 38 25 - 31	1.929 1.929	0.551 0.551	2.126 2.126	CG-M50-XXX CG-M50-1-XXX	GRY, BLK	M50	1.260 - 1.496 0.984 - 1.220	32 - 38 25 - 31	1.929 1.929	0.551 0.551	1.969 1.969
CG-PG48-XXX CG-PG48-1-XXX	GRY, BLK	PG48	1.457 - 1.732 1.142 - 1.378	37 - 44 29 - 35	1.969 1.969	0.551 0.551	2.335 2.335	CG-M63-XXX CG-M63-1-XXX	GRY, BLK	M63	1.457 - 1.732 1.142 - 1.378	37 - 44 29 - 35	1.969 1.969	0.551 0.551	2.480 2.480

PG Long Thread Length								Metric Long Thread Length							
Part No.	Color (XXX)	Thread Size	Cable Ø Range		Dimensions (in)			Part No.	Color (XXX)	Thread Size	Cable Ø Range		Dimensions (in)		
			(in)	(mm)	H	TL	W				(in)	(mm)	H	TL	W
CG-PG7-L-XXX CG-PG7-1L-XXX	GRY, BLK	PG7	0.118 - 0.256 0.079 - 0.197	3 - 6.5 2 - 5	0.866 0.866	0.591 0.591	0.492 0.492	CG-M12-L-XXX CG-M12-1L-XXX	GRY, BLK	M12	0.118 - 0.256 0.079 - 0.197	3 - 6.5 2 - 5	0.866 0.866	0.591 0.591	0.472 0.472
CG-PG9-L-XXX CG-PG9-1L-XXX	GRY, BLK	PG9	0.157 - 0.315 0.079 - 0.236	4 - 8 2 - 6	1.024 1.024	0.591 0.591	0.598 0.598	CG-M16-L-XXX CG-M16-1L-XXX	GRY, BLK	M16	0.157 - 0.315 0.079 - 0.236	4 - 8 2 - 6	1.024 1.024	0.591 0.591	0.630 0.630
CG-PG11-L-XXX CG-PG11-1L-XXX	GRY, BLK	PG11	0.157 - 0.394 0.118 - 0.276	5 - 10 3 - 7	1.063 1.063	0.591 0.591	0.732 0.732	CG-M18-L-XXX CG-M18-1L-XXX	GRY, BLK	M18	0.197 - 0.394 0.118 - 0.276	5 - 10 3 - 7	1.063 1.063	0.591 0.591	0.709 0.709
CG-PG13-L-XXX CG-PG13-1L-XXX	GRY, BLK	PG13	0.236 - 0.472 0.197 - 0.354	6 - 12 5 - 9	1.102 1.102	0.591 0.591	0.803 0.803	CG-M20-L-XXX CG-M20-1L-XXX	GRY, BLK	M20	0.236 - 0.472 0.197 - 0.354	6 - 12 5 - 9	1.102 1.102	0.591 0.591	0.787 0.787
CG-PG16-L-XXX CG-PG16-1L-XXX	GRY, BLK	PG16	0.394 - 0.551 0.275 - 0.472	10 - 14 7 - 12	1.181 1.181	0.591 0.591	0.886 0.886	CG-M25-L-XXX CG-M25-1L-XXX	GRY, BLK	M25	0.512 - 0.709 0.354 - 0.630	13 - 18 9 - 16	1.378 1.378	0.591 0.591	0.984 0.984
CG-PG21-L-XXX CG-PG21-1L-XXX	GRY, BLK	PG21	0.512 - 0.709 0.354 - 0.630	13 - 18 9 - 16	1.378 1.378	0.591 0.591	1.114 1.114	CG-M32-L-XXX CG-M32-1L-XXX	GRY, BLK	M32	0.709 - 0.984 0.512 - 0.787	18 - 25 13 - 20	1.575 1.575	0.591 0.591	1.260 1.260
CG-PG29-L-XXX CG-PG29-1L-XXX	GRY, BLK	PG29	0.705 - 0.984 0.512 - 0.787	18 - 25 13 - 20	1.575 1.575	0.709 0.709	1.457 1.457	CG-M40-L-XXX CG-M40-1L-XXX	GRY, BLK	M40	0.866 - 1.260 0.787 - 1.024	22 - 32 20 - 26	1.693 1.693	0.709 0.709	1.575 1.575
CG-PG36-L-XXX CG-PG36-1L-XXX	GRY, BLK	PG36	0.866 - 1.260 0.787 - 1.024	22 - 32 20 - 26	1.890 1.890	0.709 0.709	1.850 1.850	CG-M50-L-XXX CG-M50-1L-XXX	GRY, BLK	M50	1.260 - 1.496 0.984 - 1.220	32 - 38 25 - 31	1.890 1.890	0.709 0.709	1.969 1.969
CG-PG42-L-XXX CG-PG42-1L-XXX	GRY, BLK	PG42	1.260 - 1.496 0.984 - 1.220	32 - 38 25 - 31	1.929 1.929	0.709 0.709	2.126 2.126	CG-M63-L-XXX CG-M63-1L-XXX	GRY, BLK	M63	1.457 - 1.732 1.142 - 1.378	37 - 44 29 - 35	1.969 1.969	0.709 0.709	2.480 2.480
CG-PG48-L-XXX CG-PG48-1L-XXX	GRY, BLK	PG48	1.457 - 1.732 1.142 - 1.378	37 - 44 29 - 35	1.969 1.969	0.709 0.709	2.335 2.335								

• standard stock item

• standard stock item