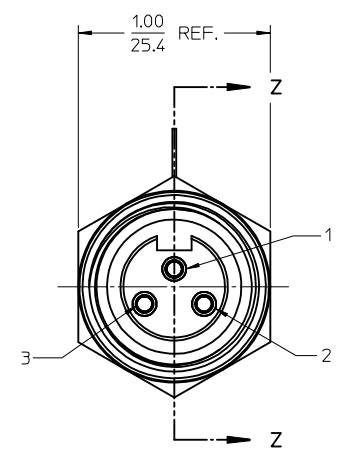
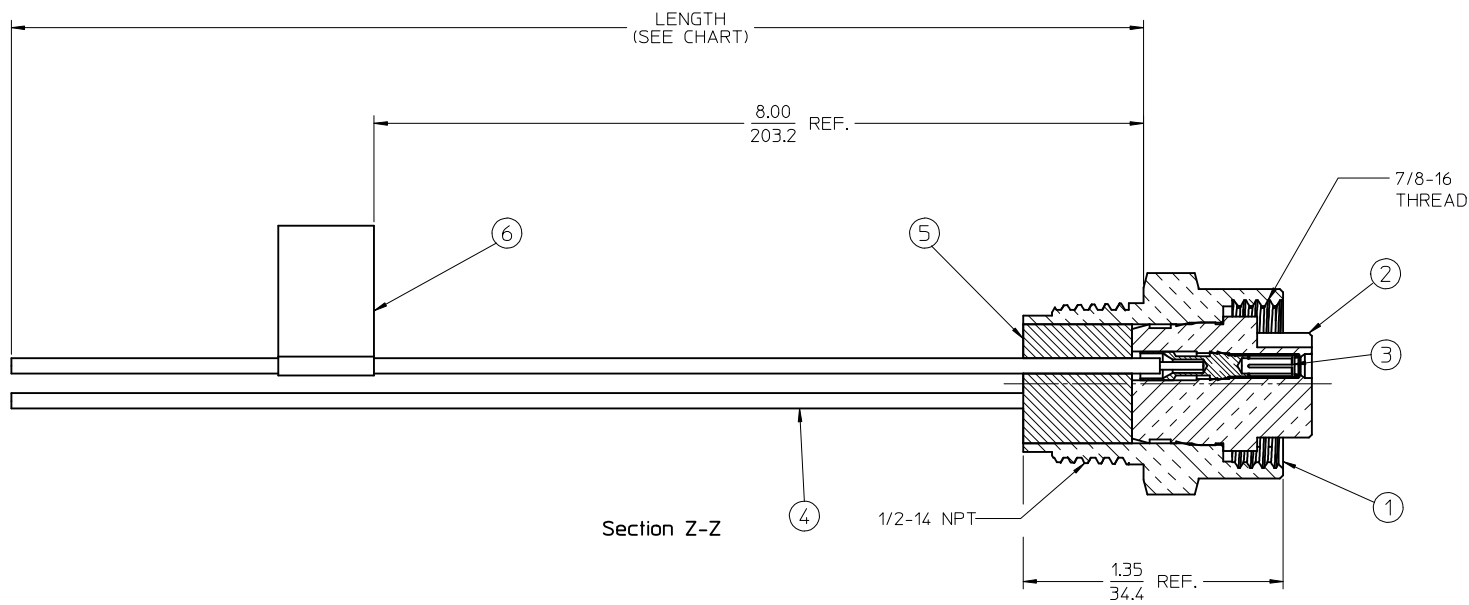
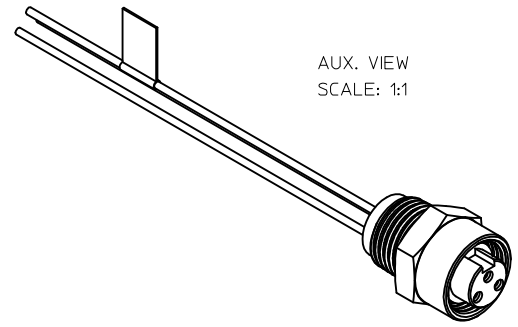


MATERIAL NO.	ENGINEERING NO.	LENGTH
1300130111	1R3000A20M010	3' 3" +2.18 -0 (1.0M + 55.6mm -0)
1300130112	1R3000A20M020	6' 7" +3.50 -0 (2.0M + 88.9mm -0)



GREEN/YELLOW	1
BLACK	2
WHITE	3

- NOTES:
1. MATERIAL: SEE TABLE
 2. FINISHES: SEE TABLE
 3. MATES WITH: 3C MINI CHANGE CABLE
 4. ELECTRICAL SPECIFICATIONS:
VOLTAGE RATING: 600V AC/DC
CURRENT RATING: 13.0 AMPS
 5. ASSEMBLY IS RoHS COMPLIANT

KNOCKOUT HOLE

WIRE DIAGRAM

ITEM	QTY.	DESCRIPTION	MATERIAL	FINISH
6	1	LABEL	VINYL	BLACK/YELLOW
5	1	POTTING MATERIAL	EPOXY	
4	3	WIRE, 16 AWG	PVC INSULATION	SEE WIRE DIAGRAM
3	3	CONTACT SOCKET & SLEEVE ASSY.	Cu ALLOY/ST. STEEL	GOLD PLATED
2	1	INSERT	PVC	YELLOW
1	1	RECEPTACLE SHELL	ZINC DIECAST	NICKEL PLATED

CHANGE SHELL MATERIAL EC NO: IPG2015-0997 DRAWN: BARDEN 2014/12/01 CHKD: RSTONE 2014/12/09 APPR: JF MURPHY 2015/04/22	QUALITY SYMBOLS	GENERAL TOLERANCES (UNLESS SPECIFIED)	DIMENSION STYLE IN/MM	SCALE 2:1	DESIGN UNITS INCH	THIRD ANGLE PROJECTION		
	▽=0						mm	INCH
	▽=0						4 PLACES ± --- ± ---	3 PLACES ± --- ± .005
							2 PLACES ± 0.13 ± .010	1 PLACE ± 0.25 ± .020
							ANGULAR ± 1/2°	

DRAFT WHERE APPLICABLE
MUST REMAIN
WITHIN DIMENSIONS

DRAWN BY R. STONE	DATE 2009/08/25
CHECKED BY B. WOODMAN	DATE 2009/08/27
APPROVED BY JF MURPHY	DATE 2009/08/26
MATERIAL NO. SEE CHART	
SIZE C	

TITLE MINI-CHANGE, RECEPTACLE 3P, FEMALE, 16 AWG	
MOLEX INCORPORATED	
DOCUMENT NO. SD-130013-085	SHEET NO. 1 OF 1
THIS DRAWING CONTAINS INFORMATION THAT IS PROPRIETARY TO MOLEX INCORPORATED AND SHOULD NOT BE USED WITHOUT WRITTEN PERMISSION	