

9 8 7 6 5 4 3 2 1

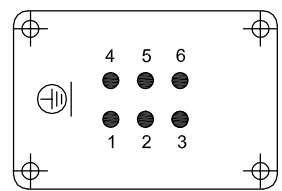
E

D

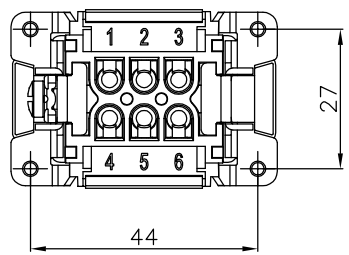
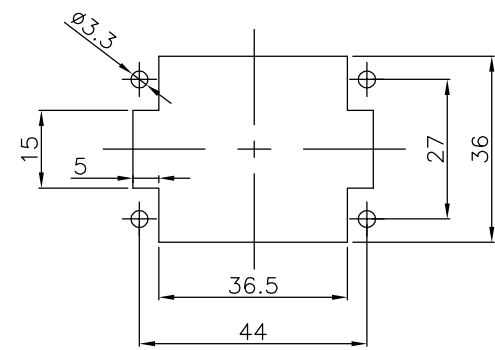
C

B

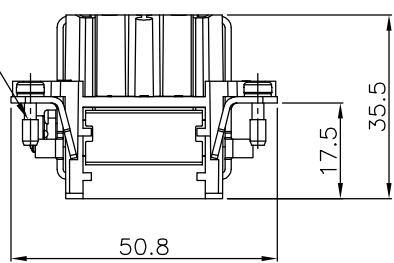
CONTACT ARRANGEMENT VIEW TERMINATION SIDE
DISPOSIZIONE CONTATTI VISTA LATO TERMINAZIONI



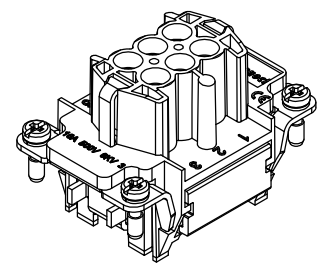
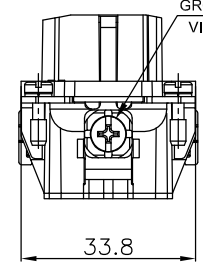
PANEL CUT OUT FOR INSERTS WITHOUT USE OF HOOD/HOUSING
FORATURA DI ALLOGGIAMENTO INSERTI PER USO SENZA CUSTODIA



FIXING SCREWS 4xM3
VITI DI FISSAGGIO 4xM3



GROUND SCREW M4
VITE DI TERRA M4



TECHNICAL CHARACTERISTICS
CARATTERISTICHE TECNICHE

Number of poles Numero di poli	6 (Position 1-6)
Rated Voltage (conductor/conductor) Tensione Nominale (conduttore/conduttore)	500V
Rated Current Corrente Nominale	16A
Contact resistance IEC 60512-2 Resistenza di contatto IEC 60512-2	≤ 3mΩ
Material and surface of the contact Materiale e finitura del contatto	Copper Alloy / Hard silver plated Legna di rame / Argentati
Wire section Sezione del filo	0.14 to 4.0 mm ² / 26 to 12 AVG
Temperatura di lavoro connettore Connector working temperature	-40°C to +125°C

THIS DRAWING CONTAINS INFORMATION THAT IS PROPRIETARY TO MOLEX INCORPORATED AND SHOULD NOT BE USED WITHOUT WRITTEN PERMISSION

EC DESCRIPTION EC NO: --- DRWN: --- CHK'D: --- APPR: --- REV: ---	QUALITY SYMBOLS	GENERAL TOLERANCES ISO 2768-2/F (UNLESS SPECIFIED)	DIMENSION UNITS MM	SCALE 1:1	<p>7306.6061.0 S-EC INSERT 6P FEM</p> <p>PRODUCT CUSTOMER DRAWING</p>					
	▽ = 0	Dim. Tol.	DRWN BY DATE	ELONGHI 04/02/2014						
	▽ = 0	3+6 ± 0.05	CHK'D BY DATE	MDUGO 04/02/2014						
	▽ = 0	6+30 ± 0.1	APPR BY DATE	MDUGO 04/02/2014						
	▽ = 0	30+120 ± 0.15	DRAWING SIZE FIRST ANGLE PROJECTION	A3						
▽ = 0	120+400 ± 0.2	DOCUMENT NUMBER	09360	MATERIAL NUMBER	0936010214	CUSTOMER	GENERAL MARKET			
□ = 0	<10 ± 1°	DOCUMENT NUMBER	0936010214		DOC TYPE	PSD	DOC PART	000	SHEET NUMBER	1 OF 1
□ = 0	10+50 ± 0°30'									
□ = 0	50+120 ± 0°20'									
▽ = 0	120+400 ± 0°10'									

9 8 7 6 5 4 3 2 1