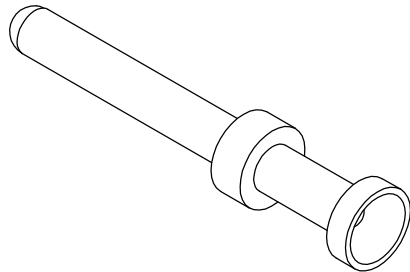
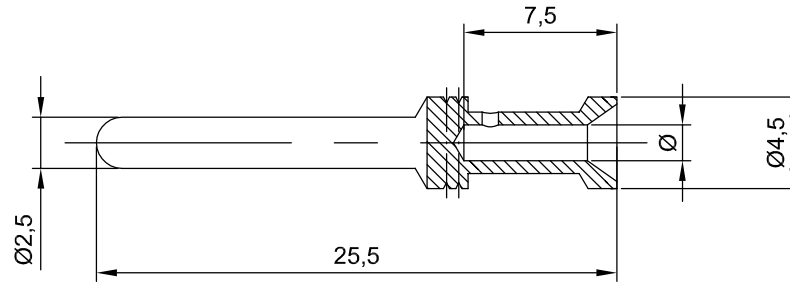


Molex H.D.C.G. reserve all rights in this document and in the information contained therein. Reproduction, use or disclosure to third parties without written authorization is strictly forbidden

Molex H.D.C.G. si riserva tutti i diritti sul presente documento e con quanto rappresentato. E' vietato riprodurre, utilizzare o rendere accessibile a terzi senza autorizzazione scritta

No. of grooves Num. gole	Wire mm <sup>2</sup> Filo mm <sup>2</sup>	Ø seat mm Ø sede mm	Wire gauge Calibro filo
2	1.5	1.75	16 AWG



SAP P.no	936010187
----------	-----------

				DRAWN BY <i>EL</i>	DATE 07.02.2014	DIMENSION STYLE mm
				CHECKED BY -	DATE -	
				APPROVED BY -	DATE -	
						SCALE 3 : 1
Ed.	MOD.	DATE	SIGN.	<b>molex</b>		

Male crimp contacts, turned, 16A for inserts and modules (silver plated)  
Contatti maschio a crimpare, torniti, 16A per inserti e moduli (argentati)

**7300.6248.0**

SIZE  
A4  
PAGE  
1 DI 1