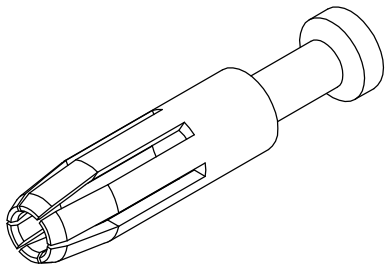
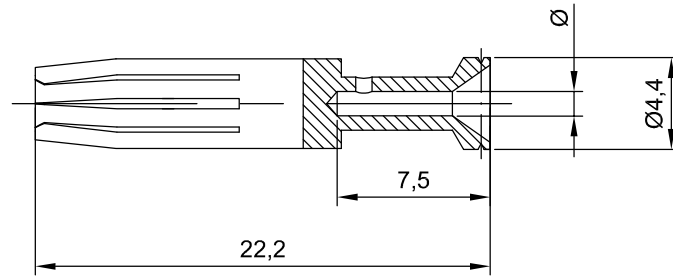


Molex H.D.C.G. reserve all rights in this document and in the information contained therein. Reproduction, use or disclosure to third parties without written authorization is strictly forbidden

Molex H.D.C.G. si riserva tutti i diritti sul presente documento e con quanto rappresentato. E' vietato riprodurre, utilizzare o renderlo accessibile a terzi senza autorizzazione scritta

No. of grooves Num. gole	Wire mm ² Filo mm ²	Ø seat mm Ø sede mm	Wire gauge Calibro filo
1	0.75	1.3	18 AWG



SAP P.no 936010169

Ed.	MOD.	DATE	SIGN.
-	-	-	-

DRAWN BY <i>SL</i>	DATE 06.02.2014
CHECKED BY -	DATE -
APPROVED BY -	DATE -

DIMENSION STYLE mm
SCALE 3:1

Female crimp contacts, turned, 16A for inserts and modules (silver plated)
Contatti femmina a crimpare, torniti, 16A per inserti e moduli (argentati)

molex

7300.6239.0

SIZE A4
PAGE 1 DI 1