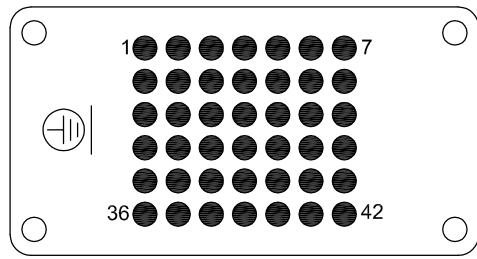
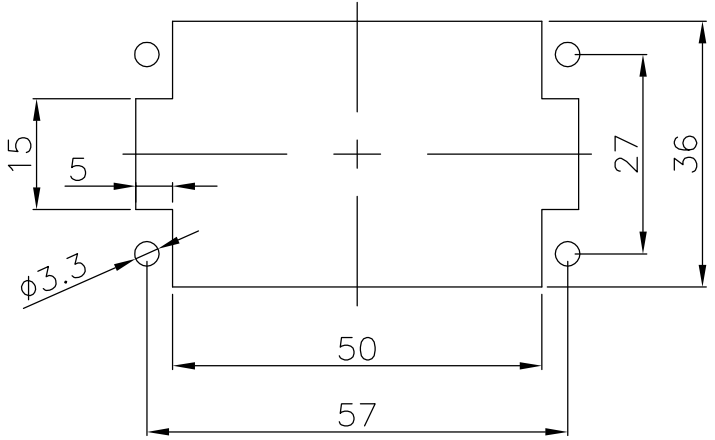


CONTACT ARRANGEMENT VIEW TERMINATION SIDE
DISPOSIZIONE CONTATTI VISTA LATO TERMINAZIONI



PANEL CUT OUT FOR INSERTS WITHOUT USE OF HOOD/HOUSING
FORATURA DI ALLOGGIAMENTO INSERTI PER USO SENZA CUSTODIA



**TECHNICAL CHARACTERISTICS
CARATTERISTICHE TECNICHE**

| | |
|--|---|
| Number of poles Numero di poli | 42 (Position 1-42) |
| Rated Voltage (conductor/conductor) Tensione Nominale (conduttore/conduttore) | 250V |
| Rated Current Corrente Nominale | 10A |
| Contact resistance IEC 60512-2 Resistenza di contatto IEC 60512-2 | $\leq 3m\Omega$ |
| Material and surface of the contact Materiale e finitura del contatto | Copper Alloy / Hard silver plated Lega di rame / Argentati |
| Wire section Sezione del filo | 0.14 to 2.5 mm ² / 26 to 14 AVG |
| Temperatura di lavoro connettore Connector working temperature | -40°C to +125°C |

| | | | | | | | | | |
|---|-----------------|--|---------|-----------------|------------------------|--------------------------|-----------------|--------------|--------|
| THIS DRAWING CONTAINS INFORMATION THAT IS PROPRIETARY TO MOLEX INCORPORATED AND SHOULD NOT BE USED WITHOUT WRITTEN PERMISSION | | | | | | | | | |
| EC DESCRIPTION | QUALITY SYMBOLS | GENERAL TOLERANCES ISO 2768-2/F (UNLESS SPECIFIED) | | DIMENSION UNITS | SCALE | molex | | | |
| | ▽ = 0 | Dim. | Tol. | MM | 1:1 | | | | |
| | ▽ = 0 | 0.5+3 | ± 0.05 | ELONGHI | 04/02/2014 | | | | |
| | ▽ = 0 | 3+6 | ± 0.05 | CHK'D BY | DATE | 7142.4146.0 | | | |
| | ▽ = 0 | 6+30 | ± 0.1 | MDUGO | 04/02/2014 | | | | |
| | ▽ = 0 | 30+120 | ± 0.15 | APPR BY | DATE | S-DD INSERT 42P MALE | | | |
| | ▽ = 0 | 120+400 | ± 0.2 | MDUGO | 04/02/2014 | | | | |
| | ▽ = 0 | ANGULAR DIMENSIONS | | DRAWING SIZE | FIRST ANGLE PROJECTION | PRODUCT CUSTOMER DRAWING | | | |
| | ⊠ = 0 | <10 | ± 1° | A3 | | | | | |
| | ■ = 0 | 10+50 | ± 0°30' | | | SERIES | MATERIAL NUMBER | CUSTOMER | |
| ■ = 0 | 50+120 | ± 0°20' | | | 09360 | 0936010106 | GENERAL MARKET | | |
| ▽ = 0 | 120+400 | ± 0°10' | | | DOCUMENT NUMBER | DOC TYPE | DOC PART | SHEET NUMBER | |
| | REV | | | | | 0936010106 | PSD | 000 | 1 OF 1 |