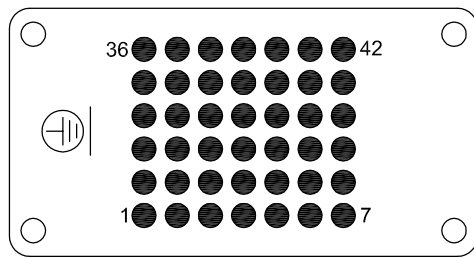
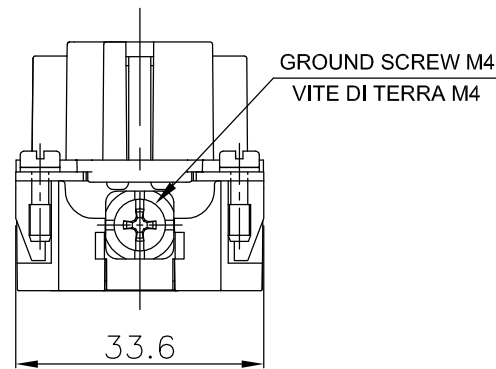
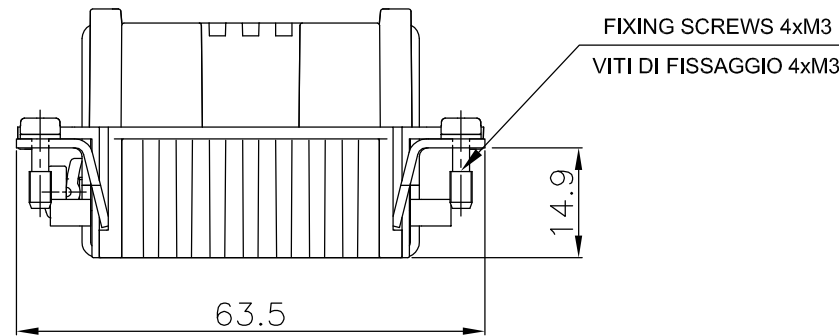
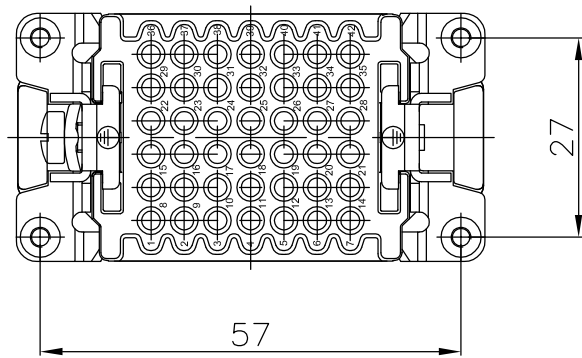
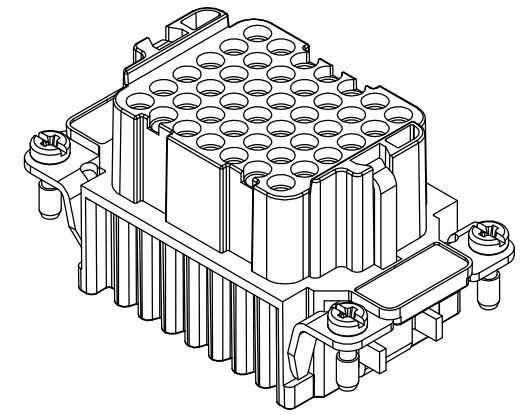
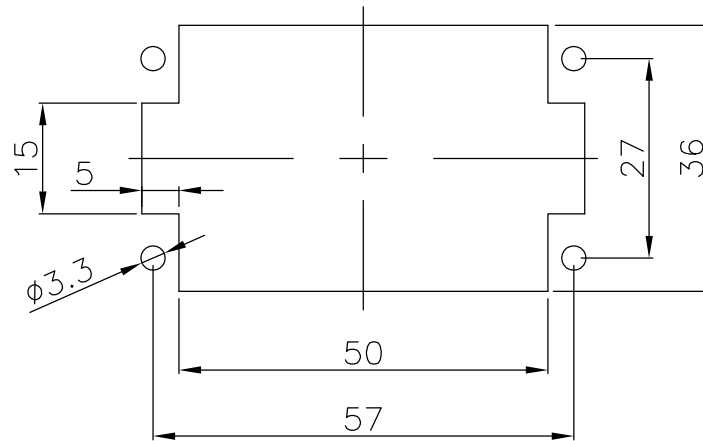


CONTACT ARRANGEMENT VIEW TERMINATION SIDE
DISPOSIZIONE CONTATTI VISTA LATO TERMINAZIONI



PANEL CUT OUT FOR INSERTS WITHOUT USE OF HOOD/HOUSING
FORATURA DI ALLOGGIAMENTO INSERTI PER USO SENZA CUSTODIA



TECHNICAL CHARACTERISTICS
CARATTERISTICHE TECNICHE

Number of poles Numero di poli	42 (Position 1-42)
Rated Voltage (conductor/conductor) Tensione Nominale (conduttore/conduttore)	250V
Rated Current Corrente Nominale	10A
Contact resistance IEC 60512-2 Resistenza di contatto IEC 60512-2	$\leq 3m\Omega$
Material and surface of the contact Materiale e finitura del contatto	Copper Alloy / Hard silver plated Lega di rame / Argentati
Wire section Sezione del filo	0.14 to 2.5 mm ² / 26 to 14 AVG
Temperatura di lavoro connettore Connector working temperature	-40°C to +125°C

THIS DRAWING CONTAINS INFORMATION THAT IS PROPRIETARY TO MOLEX INCORPORATED AND SHOULD NOT BE USED WITHOUT WRITTEN PERMISSION

QUALITY SYMBOLS	GENERAL TOLERANCES ISO 2768-2/F (UNLESS SPECIFIED)		DIMENSION UNITS	SCALE
	$\nabla = 0$	Dim.	Tol.	MM
$\nabla = 0$	0.5+3	± 0.05	DRWN BY	DATE
$\nabla = 0$	3+6	± 0.05	ELONGHI	04/02/2014
$\nabla = 0$	6+30	± 0.1	CHK'D BY	DATE
$\nabla = 0$	30+120	± 0.15	MDUGO	04/02/2014
$\nabla = 0$	120+400	± 0.2	APPR BY	DATE
$\nabla = 0$	ANGULAR DIMENSIONS		MDUGO	04/02/2014
$\square = 0$	<10	$\pm 1^\circ$	DRAWING SIZE	FIRST ANGLE PROJECTION
$\blacksquare = 0$	10+50	$\pm 0^\circ30'$	A3	
$\nabla = 0$	50+120	$\pm 0^\circ20'$		
$\nabla = 0$	120+400	$\pm 0^\circ10'$		

molex		
7142.4046.0		
S-DD INSERT 42P FEM		
PRODUCT CUSTOMER DRAWING		
SERIES	MATERIAL NUMBER	CUSTOMER
09360	0936010105	GENERAL MARKET
DOCUMENT NUMBER	DOC TYPE	DOC PART SHEET NUMBER
0936010105	PSD	000 1 OF 1