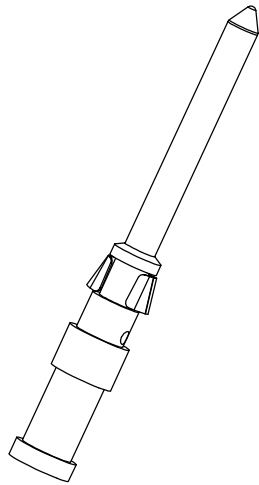
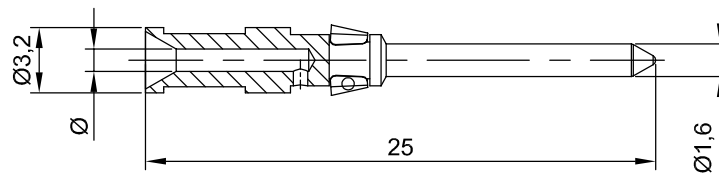


Molex H.D.C.G. reserve all rights in this document and in the information contained therein. Reproduction, use or disclosure to third parties without written authorization is strictly forbidden

Molex H.D.C.G. si riserva tutti i diritti sul presente documento e con quanto rappresentato. E' vietato riprodurre, utilizzare o renderlo accessibile a terzi senza autorizzazione scritta

Stripping length Spellatura filo mm	Wire mm <sup>2</sup> Filo mm <sup>2</sup>	Ø seat mm Ø sede mm	Wire gauge Calibro filo
8	0.5	1.1	20 AWG



SAP P.no	936010053
----------	-----------

Ed.	MOD.	DATE	SIGN.
-	-	-	-

DRAWN BY <i>SL</i>	DATE 10.02.2014
CHECKED BY -	DATE -
APPROVED BY -	DATE -

DIMENSION STYLE mm
SCALE 3:1

Male crimp contacts, turned, 10A for inserts and modules (silver plated)  
Contatti maschio a crimpare, torniti, 10A per inserti e moduli (argentati)

**molex**

7100.4212.0

SIZE  
A4  
PAGE  
1 DI 1