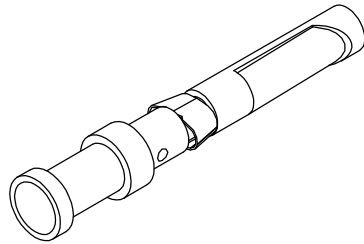
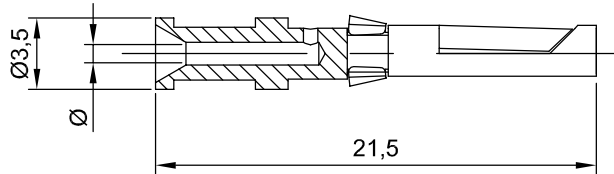


Molex H.D.C.G. reserve all rights in this document and in the information contained therein. Reproduction, use or disclosure to third parties without written authorization is strictly forbidden

Molex H.D.C.G. si riserva tutti i diritti sul presente documento e con quanto rappresentato. E' vietato riprodurre, utilizzare o rendere accessibile a terzi senza autorizzazione scritta

Stripping lenght Spellatura filo mm	Wire mm <sup>2</sup> Filo mm <sup>2</sup>	Ø seat mm Ø sede mm	Wire gauge Calibro filo
8	0.5	1.1	20 AWG



SAP P.no	936010041
----------	-----------

				DRAWN BY <i>SL</i>	DATE 07.02.2014	DIMENSION STYLE mm	Female crimp contacts, turned, 10A for inserts and modules (silver plated) Contatti femmina a crimpare, torniti, 10A per inserti e moduli (argentati)
				CHECKED BY -	DATE -		
				APPROVED BY -	DATE -	SCALE 3:1	
Ed.	MOD.	DATE	SIGN.	<b>molex</b>		7100.4202.0	SIZE A4
							PAGE 1 DI 1