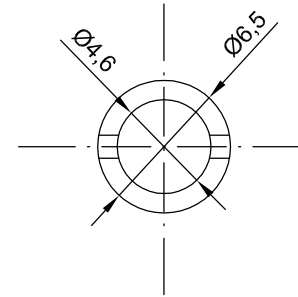
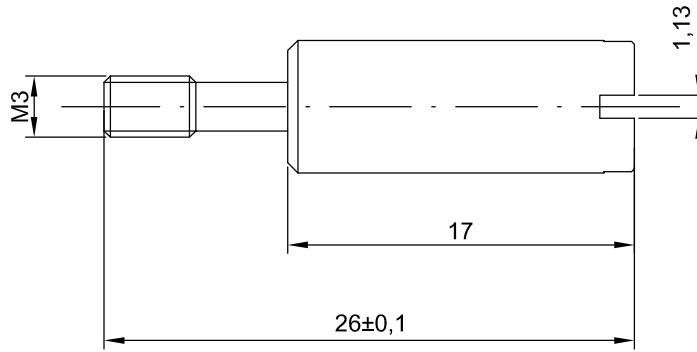


Molex H.D.C.G. reserve all rights in this document and in the information contained therein. Reproduction, use or disclosure to third parties without written authorization is strictly forbidden

Molex H.D.C.G. si riserva tutti i diritti sul presente documento e con quanto rappresentato. E' vietato riprodurre, utilizzare o renderlo accessibile a terzi senza autorizzazione scritta



SAP P.no 936050019

Ed.	MOD.	DATE	SIGN.
-	-	-	-

DRAWN BY	DATE
<i>EL</i>	19.05.2014
CHECKED BY	DATE
-	-
APPROVED BY	DATE
-	-

DIMENSION STYLE	mm
SCALE	3 : 1

Doble code pin, female
zinc plated steel
Perni di codifica doppi, femmina
acciaio zincato

molex

7000.6876.3

SIZE	A4
PAGE	1 DI 1