

Two-hand operation console for command devices, 22 mm, round,  
Enclosure material metal, enclosure top part gray, 3 control points,  
without equipment, with cable cut-outs for metric screw connections



Product brand name	SIRIUS ACT
Product designation	Two-hand operation console
Product type designation	3SU1

### Enclosure

Design of the housing	Two-hand operating console without standard equipment
Material of the enclosure	metal
Number of command points	3
Color	
<ul style="list-style-type: none"> <li>of top part of the enclosure</li> </ul>	grey
Delivery state	
<ul style="list-style-type: none"> <li>as a kit</li> <li>pre-wired on strip terminal</li> </ul>	No No
Mounting type of the enclosure	Horizontal

### Actuator

Design of the operating mechanism	Unequipped
Manner of function of the actuating element	without
Product feature	
<ul style="list-style-type: none"> <li>lockout</li> </ul>	No

• staggered switching	No
<b>Number of contact modules</b>	0

#### General technical data

<b>Product function</b>	
• positive opening	No
• EMERGENCY OFF function	No
• EMERGENCY STOP function	No
<b>Product component</b>	
• Stand/pedestal	No
<b>Protection class IP</b>	IP66
<b>Degree of protection NEMA rating</b>	1, 2, 3, 3R, 4, 4X, 12, 13
<b>Shock resistance</b>	
• acc. to IEC 60068-2-27	Sinusoidal half-wave 50 g / 11 ms
<b>Vibration resistance</b>	
• acc. to IEC 60068-2-6	10 ... 500 Hz: 5g
<b>Reference code acc. to DIN EN 81346-2</b>	U
<b>Reference code acc. to DIN EN 61346-2</b>	U

#### Auxiliary circuit

<b>Number of NC contacts for auxiliary contacts</b>	0
<b>Number of NO contacts for auxiliary contacts</b>	0

#### Connections/ Terminals

<b>Type of electrical connection on enclosure</b>	Cable routing at the rear 2 x M25
---	-----------------------------------

#### Ambient conditions

<b>Ambient temperature</b>	
• during operation	-25 ... +70 °C
• during storage	-40 ... +80 °C
Environmental category during operation acc. to IEC 60721	3M6, 3S2, 3B2, 3C3, 3K6 (with relative air humidity of 10 ... 95 %, no condensation in operation permitted for all devices behind front panel)

#### Installation/ mounting/ dimensions

<b>Height</b>	185.6 mm
<b>Width</b>	492.4 mm
<b>Depth</b>	159.5 mm

#### Accessories

<b>Number of backing plates</b>	0
---------------------------------	---

#### Certificates/ approvals

**General Product Approval****Declaration of Conformity**

CCC



UL



VDE



EG-Konf.

[Miscellaneous](#)**Test Certificates****Marine / Shipping**[Type Test Certificates/Test Report](#)[Special Test Certificate](#)

ABS



LRS



PRS



RINA

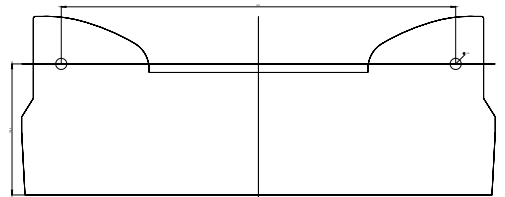
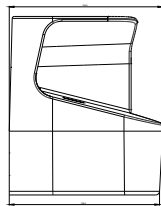
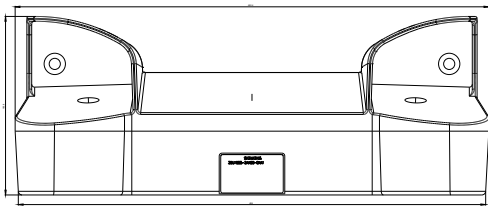
**Marine / Shipping****other**[Confirmation](#)

RMRS



DNVGL.COM/AF

**Further information****Information- and Downloadcenter (Catalogs, Brochures,...)**<https://www.siemens.com/ic10>**Industry Mall (Online ordering system)**<https://mall.industry.siemens.com/mall/en/en/Catalog/product?mlfb=3SU1853-3AA00-0AA1>**Cax online generator**<http://support.automation.siemens.com/WW/CAXorder/default.aspx?lang=en&mlfb=3SU1853-3AA00-0AA1>**Service&Support (Manuals, Certificates, Characteristics, FAQs,...)**<https://support.industry.siemens.com/cs/ww/en/ps/3SU1853-3AA00-0AA1>**Image database (product images, 2D dimension drawings, 3D models, device circuit diagrams, EPLAN macros, ...)**[http://www.automation.siemens.com/bilddb/cax\\_de.aspx?mlfb=3SU1853-3AA00-0AA1&lang=en](http://www.automation.siemens.com/bilddb/cax_de.aspx?mlfb=3SU1853-3AA00-0AA1&lang=en)



last modified:

03/06/2020