

AS-Interface module, A/B slave, 4 inputs and 3 outputs, black, Spring-type terminal (Push-in), for input/output, for floor mounting



Product brand name	SIRIUS ACT
Product designation	AS-Interface module
Product type designation	3SU1
General technical data	
Product function	4 DI / 3 DQ AB
Degree of pollution	3
Type of voltage	
• of the operating voltage	DC
• of the input voltage	DC
Consumed current	
• maximum	150 mA
Protection class IP	IP20
Shock resistance	
• for railway applications acc. to DIN EN 61373	Category 1, Class B
Vibration resistance	
• for railway applications acc. to DIN EN 61373	Category 1, Class B
Reference code acc. to DIN 40719 extended according to IEC 204-2 acc. to IEC 750	A
Reference code acc. to DIN EN 81346-2	K

Reference code acc. to DIN EN 61346-2	K
Design of the slave type	4 DI /3 DO AB
AS interface slave profile	S-7.A.E
ID1 code	0...7
Number of AS-i slaves	1
Protocol is supported ASIsafe (Safety at work) protocol	No
Operating voltage <ul style="list-style-type: none"> • rated value 	18 ... 31.6 V
Operating voltage 1 <ul style="list-style-type: none"> • at DC rated value 	30 V

Communication/ Protocol

Protocol is supported <ul style="list-style-type: none"> • AS-Interface protocol 	Yes
---	-----

Inputs/ Outputs

Number of digital inputs <ul style="list-style-type: none"> • safety-related 	4 0
Number of digital outputs	3

Connections/ Terminals

Type of electrical connection	Push-in terminal
Type of connectable conductor cross-sections <ul style="list-style-type: none"> • solid without core end processing • finely stranded without core end processing • at AWG conductors 	1x (0.14 ... 0.5 mm ²) 1x (0.2 ... 0.5 mm ²) 1x (26 ... 20)

Product Function

Suitability for use <ul style="list-style-type: none"> • safety-related circuits 	No
---	----

Ambient conditions

Ambient temperature <ul style="list-style-type: none"> • during operation • during storage 	-25 ... +70 °C -40 ... +80 °C
Environmental category during operation acc. to IEC 60721	3M6, 3S2, 3B2, 3C3 (without salt spray), 3K6 (with relative humidity of 10 ... 95%, no condensation in operation permitted)

Installation/ mounting/ dimensions

Mounting type <ul style="list-style-type: none"> • of modules and accessories • of AS-i slaves 	Floor mounting Floor mounting
Height	57.5 mm
Width	23.8 mm
Depth	53.5 mm

Certificates/ approvals

General Product Approval	EMC	Declaration of Conformity	Test Certificates
--------------------------	-----	---------------------------	-------------------



[Miscellaneous](#)

[Type Test Certificates/Test Report](#)

Test Certificates	other
-------------------	-------

[Special Test Certificate](#)

[Confirmation](#)

Further information

Information- and Downloadcenter (Catalogs, Brochures,...)

<https://www.siemens.com/ic10>

Industry Mall (Online ordering system)

<https://mall.industry.siemens.com/mall/en/en/Catalog/product?mfb=3SU1400-2EJ10-6AA0>

Cax online generator

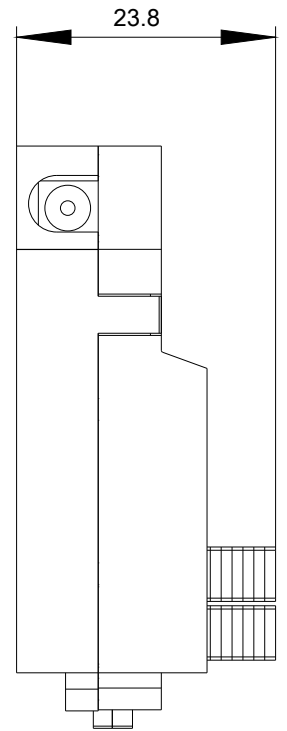
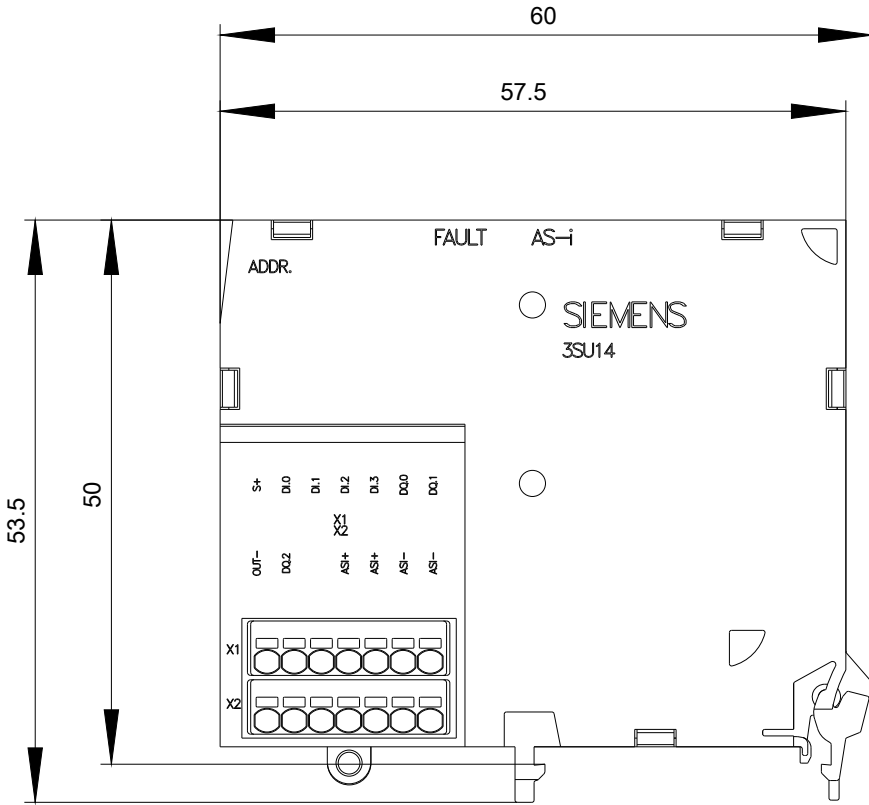
<http://support.automation.siemens.com/WW/CAXorder/default.aspx?lang=en&mfb=3SU1400-2EJ10-6AA0>

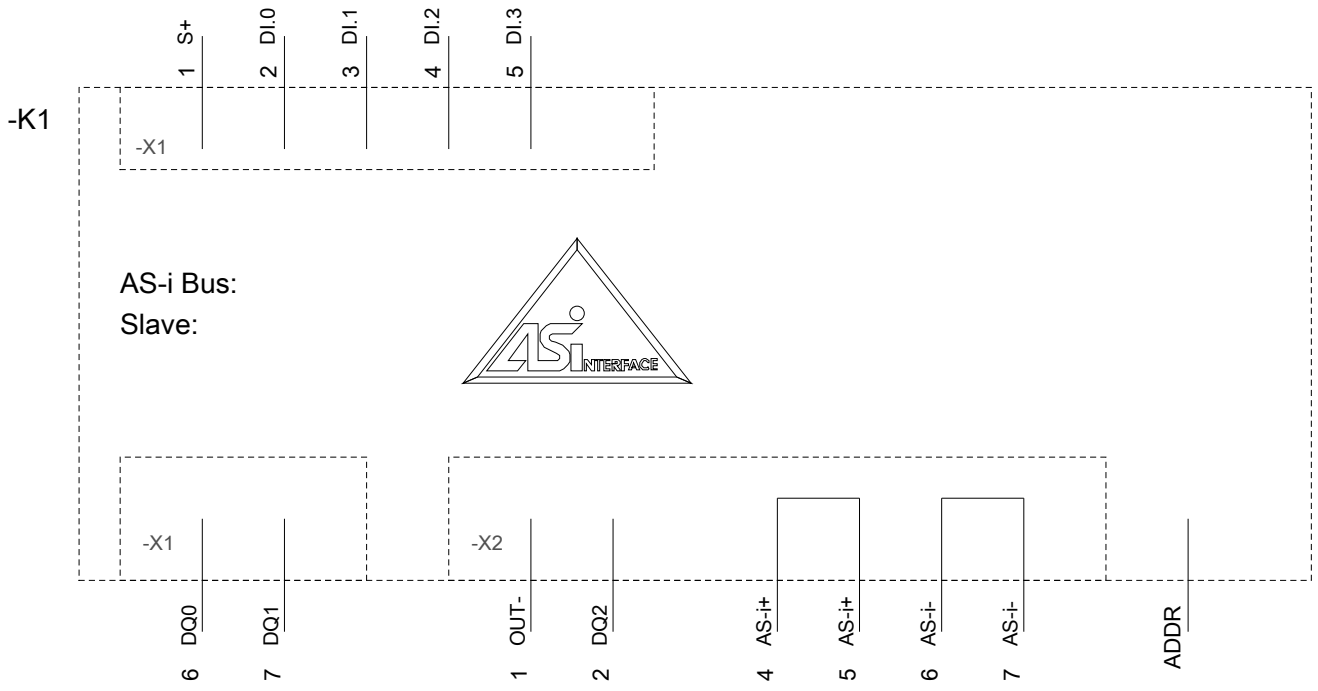
Service&Support (Manuals, Certificates, Characteristics, FAQs,...)

<https://support.industry.siemens.com/cs/ww/en/ps/3SU1400-2EJ10-6AA0>

Image database (product images, 2D dimension drawings, 3D models, device circuit diagrams, EPLAN macros, ...)

http://www.automation.siemens.com/bilddb/cax_de.aspx?mfb=3SU1400-2EJ10-6AA0&lang=en





last modified:

03/10/2020