

AS-Interface module, 4 inputs and 4 outputs, black, Spring-type terminal (push-in) for input/output, for front plate mounting



Product brand name	SIRIUS ACT
Product designation	AS-Interface module
Product type designation	3SU1
<b>General technical data</b>	
Product function	4 DI / 4 DQ
Degree of pollution	3
Type of voltage	
• of the operating voltage	DC
• of the input voltage	DC
Consumed current	
• maximum	150 mA
Protection class IP	IP20
Shock resistance	
• for railway applications acc. to DIN EN 61373	Category 1, Class B
Vibration resistance	
• for railway applications acc. to DIN EN 61373	Category 1, Class B
Reference code acc. to DIN 40719 extended according to IEC 204-2 acc. to IEC 750	A
Reference code acc. to DIN EN 81346-2	K

Reference code acc. to DIN EN 61346-2	K
Design of the slave type	4 DI / 4 DO
AS interface slave profile	S-7.0.E
ID1 code	0...F
Number of AS-i slaves	1
Protocol is supported ASIsafe (Safety at work) protocol	No
<b>Operating voltage</b>	
• rated value	18 ... 31.6 V
<b>Operating voltage 1</b>	
• at DC rated value	30 V

#### Communication/ Protocol

<b>Protocol is supported</b>	
• AS-Interface protocol	Yes

#### Inputs/ Outputs

<b>Number of digital inputs</b>	4
• safety-related	0
<b>Number of digital outputs</b>	4

#### Connections/ Terminals

<b>Type of electrical connection</b>	Push-in terminal
<b>Type of connectable conductor cross-sections</b>	
• solid without core end processing	1x (0.14 ... 0.5 mm <sup>2</sup> )
• finely stranded without core end processing	1x (0.2 ... 0.5 mm <sup>2</sup> )
• at AWG conductors	1x (26 ... 20)

#### Product Function

<b>Suitability for use</b>	
• safety-related circuits	No

#### Ambient conditions

<b>Ambient temperature</b>	
• during operation	-25 ... +70 °C
• during storage	-40 ... +80 °C
Environmental category during operation acc. to IEC 60721	3M6, 3S2, 3B2, 3C3 (without salt spray), 3K6 (with relative humidity of 10 ... 95%, no condensation in operation permitted)

#### Installation/ mounting/ dimensions

<b>Mounting type</b>	
• of modules and accessories	Front plate mounting
• of AS-i slaves	Frontplattenbefestigung
<b>Height</b>	60 mm
<b>Width</b>	23.8 mm
<b>Depth</b>	53.5 mm

## Certificates/ approvals

General Product Approval	EMC	Declaration of Conformity	Test Certificates
--------------------------	-----	---------------------------	-------------------



[Miscellaneous](#)

[Type Test Certificates/Test Report](#)

Test Certificates	other
-------------------	-------

[Special Test Certificate](#)

[Confirmation](#)

## Further information

**Information- and Downloadcenter (Catalogs, Brochures,...)**

<https://www.siemens.com/ic10>

**Industry Mall (Online ordering system)**

<https://mall.industry.siemens.com/mall/en/en/Catalog/product?mfb=3SU1400-1EK10-6AA0>

**Cax online generator**

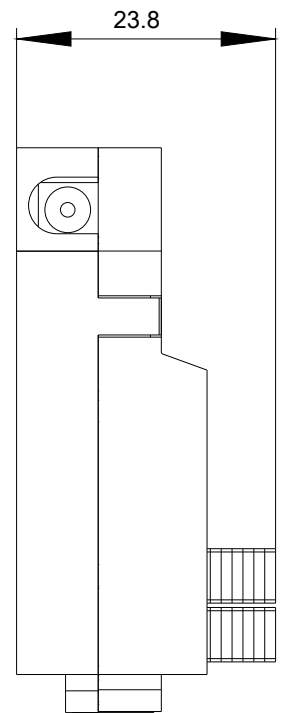
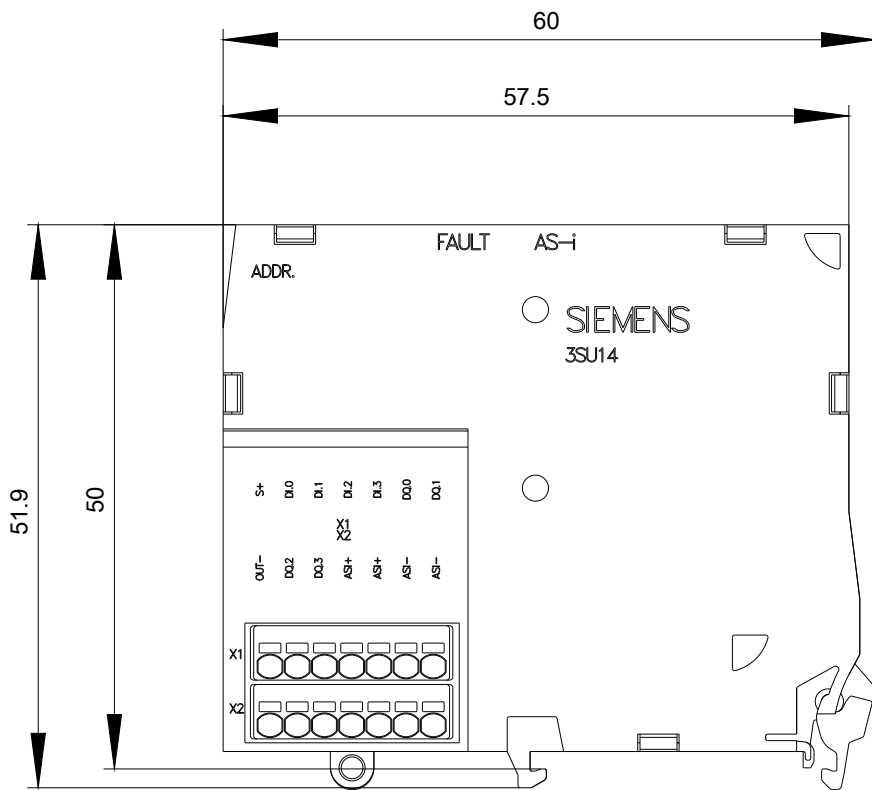
<http://support.automation.siemens.com/WW/CAXorder/default.aspx?lang=en&mfb=3SU1400-1EK10-6AA0>

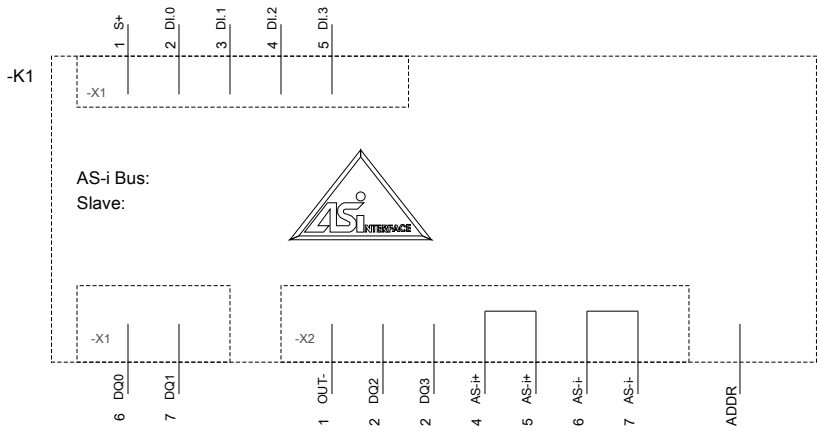
**Service&Support (Manuals, Certificates, Characteristics, FAQs,...)**

<https://support.industry.siemens.com/cs/ww/en/ps/3SU1400-1EK10-6AA0>

**Image database (product images, 2D dimension drawings, 3D models, device circuit diagrams, EPLAN macros, ...)**

[http://www.automation.siemens.com/bilddb/cax\\_de.aspx?mfb=3SU1400-1EK10-6AA0&lang=en](http://www.automation.siemens.com/bilddb/cax_de.aspx?mfb=3SU1400-1EK10-6AA0&lang=en)





last modified:

03/10/2020