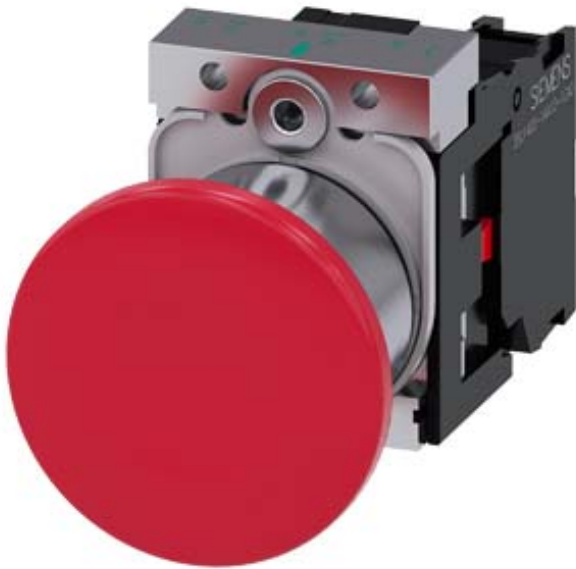


Mushroom pushbutton, 22 mm, round, metal, shiny, red, 40 mm, latching, pull-to-unlatch mechanism, with holder, 1 NC, screw terminal



|  |  |
|--|--|
| <b>Product brand name</b>  | SIRIUS ACT   |
| <b>Product designation</b>   | Mushroom pushbuttons   |
| <b>Design of the product</b>   | Complete unit  |
| <b>Product type designation</b>  | 3SU1   |
| <b>Product line</b>  | Metal, shiny, 22 mm  |
| <b>Manufacturer's article number</b>   |  |
| <ul style="list-style-type: none"> <li>• 1 of supplied contact module</li> <li>• of the supplied holder</li> <li>• of the supplied actuator</li> </ul> | <a href="#">3SU1400-1AA10-1CA0</a><br><a href="#">3SU1550-0AA10-0AA0</a><br><a href="#">3SU1050-1BA20-0AA0</a> |

### Enclosure

|                                 |   |
|---------------------------------|---|
| <b>Number of command points</b> | 1 |
|---------------------------------|---|

### Actuator

|  |          |
|--|----------|
| <b>Manner of function of the actuating element</b>                           | latching |
| <b>Product extension optional Light source</b>                               | No       |
| <b>Color</b>   |          |
| <ul style="list-style-type: none"> <li>• of the actuating element</li> </ul> | red      |
| <b>Material of the actuating element</b>                                     | plastic  |
| <b>Shape of the actuating element</b>  | round    |

|   |                           |
|---|---------------------------|
| Outer diameter of the actuating element | 40 mm                     |
| Number of contact modules               | 1                         |
| Type of unlocking device                | pull-to-unlatch mechanism |
| Number of switching positions           | 2                         |

#### Front ring

|                              |                   |
|------------------------------|-------------------|
| Product component front ring | Yes               |
| Design of the front ring     | Standard          |
| Material of the front ring   | Metal, high gloss |
| Color of the front ring      | silver            |

#### Holder

|                        |       |
|------------------------|-------|
| Material of the holder | Metal |
|------------------------|-------|

#### Display

|                |   |
|----------------|---|
| Number of LEDs | 0 |
|----------------|---|

#### General technical data

|   |                                   |
|---|-----------------------------------|
| <b>Product function</b>                           |                                   |
| • positive opening                                | Yes                               |
| • EMERGENCY OFF function                          | No                                |
| • EMERGENCY STOP function                         | No                                |
| <b>Product component</b>                          |                                   |
| • Light source                                    | No                                |
| <b>Insulation voltage</b>                         |                                   |
| • rated value                                     | 500 V                             |
| <b>Degree of pollution</b>                        | 3                                 |
| <b>Type of voltage</b>                            |                                   |
| • of the operating voltage                        | AC/DC                             |
| <b>Surge voltage resistance rated value</b>       | 6 kV                              |
| <b>Protection class IP</b>                        | IP66, IP67, IP69(IP69K)           |
| • of the terminal                                 | IP20                              |
| <b>Degree of protection NEMA rating</b>           | 1, 2, 3, 3R, 4, 4X, 12, 13        |
| <b>Shock resistance</b>                           |                                   |
| • acc. to IEC 60068-2-27                          | Sinusoidal half-wave 50 g / 11 ms |
| <b>Vibration resistance</b>                       |                                   |
| • acc. to IEC 60068-2-6                           | 10 ... 500 Hz: 5g                 |
| <b>Operating frequency maximum</b>                | 1 800 1/h                         |
| <b>Mechanical service life (switching cycles)</b> |                                   |
| • typical   | 500 000                           |
| <b>Electrical endurance (switching cycles)</b>    |                                   |
| • typical   | 10 000 000                        |
| <b>Thermal current</b>                            | 10 A                              |
| <b>Reference code acc. to DIN EN 81346-2</b>      | P                                 |
| <b>Reference code acc. to DIN EN 61346-2</b>      | P                                 |

|   |  |
|---|--|
| <b>Continuous current of the C characteristic MCB</b>   | 10 A; for a short-circuit current smaller than 400 A |
| <b>Continuous current of the quick DIAZED fuse link</b>   | 10 A   |
| <b>Continuous current of the DIAZED fuse link gG</b>  | 10 A   |
| <b>Operating voltage</b>  |  |
| <ul style="list-style-type: none"> <li>• at AC <ul style="list-style-type: none"> <li>— at 50 Hz rated value</li> <li>— at 60 Hz rated value</li> </ul> </li> <li>• at DC <ul style="list-style-type: none"> <li>— rated value</li> </ul> </li> </ul> | 5 ... 500 V<br>5 ... 500 V<br>5 ... 500 V            |

### Power Electronics

|                            |  |
|----------------------------|--|
| <b>Contact reliability</b> | One maloperation per 100 million (17 V, 5 mA), one maloperation per 10 million (5 V, 1 mA) |
|----------------------------|--|

### Auxiliary circuit

|   |              |
|---|--------------|
| <b>Design of the contact of auxiliary contacts</b>  | Silver alloy |
| <b>Number of NC contacts for auxiliary contacts</b> | 1            |
| <b>Number of NO contacts for auxiliary contacts</b> | 0            |

### Connections/ Terminals

|   |   |
|---|---|
| <b>Type of electrical connection</b>  |   |
| <ul style="list-style-type: none"> <li>• of modules and accessories</li> </ul>  | Screw-type terminal   |
| <b>Type of connectable conductor cross-sections</b>   |   |
| <ul style="list-style-type: none"> <li>• solid with core end processing</li> <li>• solid without core end processing</li> <li>• finely stranded with core end processing</li> <li>• finely stranded without core end processing</li> <li>• at AWG conductors</li> </ul> | 2x (0.5 ... 0.75 mm <sup>2</sup> )<br>2x (1.0 ... 1.5 mm <sup>2</sup> )<br>2x (0.5 ... 1.5 mm <sup>2</sup> )<br>2x (1,0 ... 1,5 mm <sup>2</sup> )<br>2x (18 ... 14) |
| <b>Tightening torque of the screws in the bracket</b>   | 1 ... 1.2 N·m   |
| <b>Tightening torque</b>  |   |
| <ul style="list-style-type: none"> <li>• with screw-type terminals</li> </ul>   | 0.8 ... 0.9 N·m   |

### Ambient conditions

|  |  |
|--|--|
| <b>Ambient temperature</b>   |  |
| <ul style="list-style-type: none"> <li>• during operation</li> <li>• during storage</li> </ul> | -25 ... +70 °C<br>-40 ... +80 °C   |
| Environmental category during operation acc. to IEC 60721                                      | 3M6, 3S2, 3B2, 3C3, 3K6 (with relative air humidity of 10 ... 95 %, no condensation in operation permitted for all devices behind front panel) |

### Installation/ mounting/ dimensions



|  |                      |
|--|----------------------|
| <b>Mounting type</b>   |                      |
| <ul style="list-style-type: none"> <li>• of modules and accessories</li> </ul> | Front plate mounting |
| <b>Height</b>  | 40 mm                |
| <b>Width</b>   | 40 mm                |
| <b>Shape of the installation opening</b>                                       | round                |

|   |         |
|---|---------|
| Mounting diameter                           | 22.3 mm |
| Positive tolerance of installation diameter | 0.4 mm  |
| Mounting height                             | 27.5 mm |
| Installation width                          | 40 mm   |
| Installation depth                          | 49.7 mm |

## Certificates/ approvals

| General Product Approval   | Declaration of Conformity   |
|--|---|
| <br>CCC | <br>EG-Konf. |
| <br>CSA | <a href="#">Miscellaneous</a>   |
| <br>UL  |   |
| <br>EAC |   |

| Test Certificates                                  | Marine / Shipping   |
|--|---|
| <a href="#">Type Test Certificates/Test Report</a> | <a href="#">Special Test Certificate</a>  |
|  | <br>ABS    |
|  | <br>LRS    |
|  | <br>PRS  |
|  | <br>RINA |

| Marine / Shipping  | other                        |
|--|------------------------------|
| <br>RMRS   | <a href="#">Confirmation</a> |
| <br>DNV-GL |                              |

## Further information

**Information- and Downloadcenter (Catalogs, Brochures,...)**

<https://www.siemens.com/ic10>

**Industry Mall (Online ordering system)**

<https://mall.industry.siemens.com/mall/en/en/Catalog/product?mlfb=3SU1150-1BA20-1CA0>

**Cax online generator**

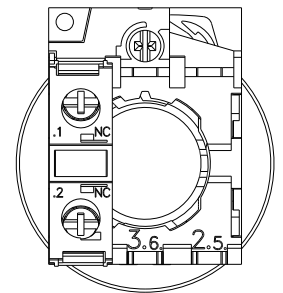
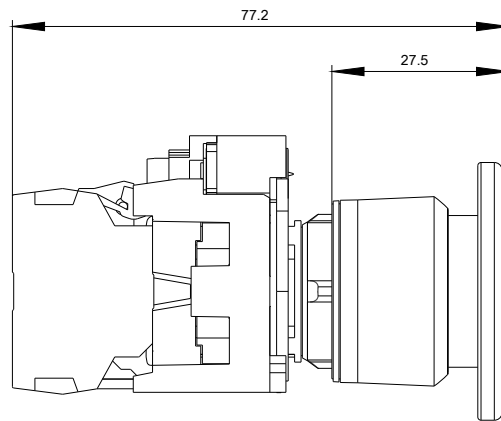
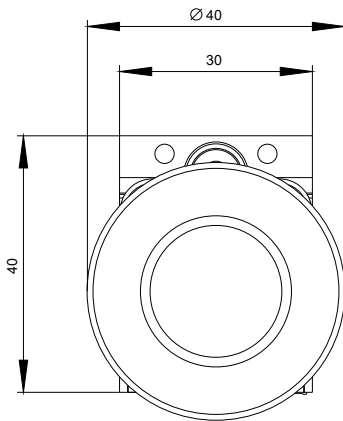
<http://support.automation.siemens.com/WW/CAXorder/default.aspx?lang=en&mlfb=3SU1150-1BA20-1CA0>

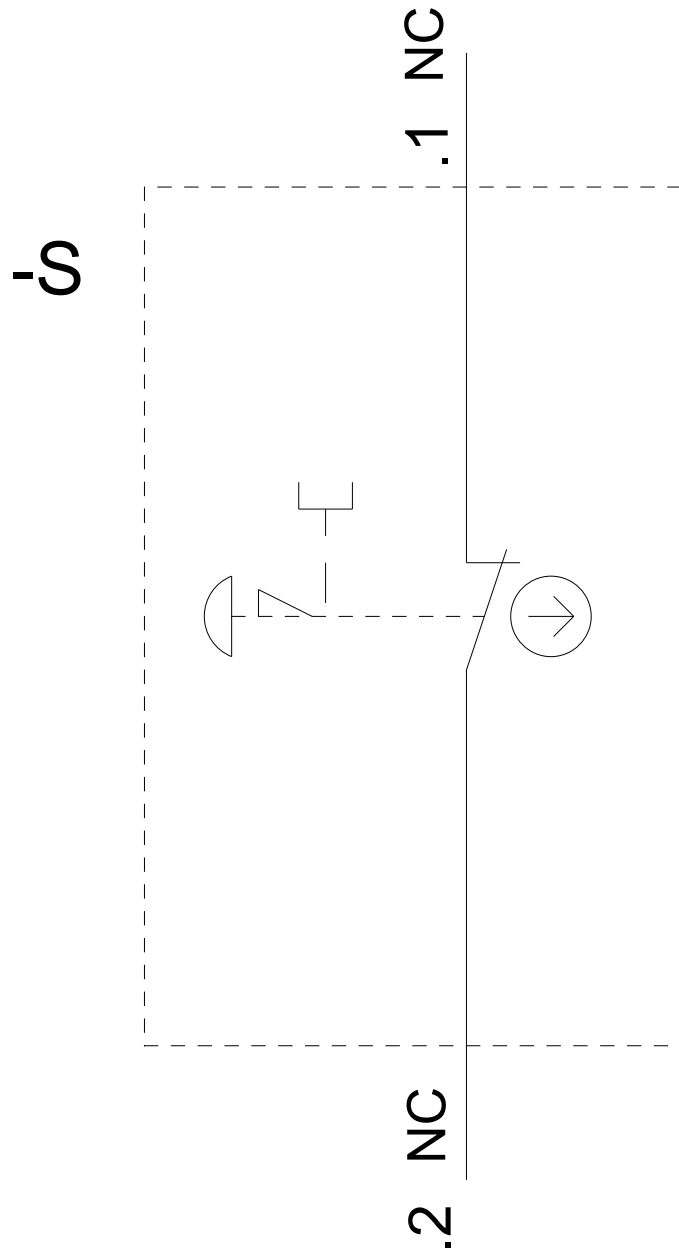
**Service&Support (Manuals, Certificates, Characteristics, FAQs,...)**

<https://support.industry.siemens.com/cs/ww/en/ps/3SU1150-1BA20-1CA0>

**Image database (product images, 2D dimension drawings, 3D models, device circuit diagrams, EPLAN macros, ...)**

[http://www.automation.siemens.com/bilddb/cax\\_de.aspx?mlfb=3SU1150-1BA20-1CA0&lang=en](http://www.automation.siemens.com/bilddb/cax_de.aspx?mlfb=3SU1150-1BA20-1CA0&lang=en)





last modified:

02/18/2020