

Load feeder fuseless, Direct-on-line starting 400 V AC, Size S00  
 0.90...1.25 A 24 V DC Spring-type terminal for installation on  
 standard mounting rail (also fulfills type of coordination 1) Type of  
 coordination 2, I<sub>q</sub> = 150 kA 1 NO (contactor)



|  |                                     |
|--|-------------------------------------|
| <b>Product brand name</b>  | SIRIUS                              |
| <b>Product designation</b>   | Direct (on-line) starter            |
| <b>Design of the product</b>   | for standard rail or screw mounting |
| <b>Product type designation</b>  | 3RA21                               |
| <b>Manufacturer's article number</b>   |                                     |
| <ul style="list-style-type: none"> <li>• of the supplied contactor</li> </ul>        | <a href="#">3RT2015-2BB41</a>       |
| <ul style="list-style-type: none"> <li>• of the supplied circuit-breakers</li> </ul> | <a href="#">3RV2011-0KA20</a>       |
| <ul style="list-style-type: none"> <li>• of the supplied link module</li> </ul>      | <a href="#">3RA2911-2AA00</a>       |

| General technical data   |            |
|--|------------|
| <b>Size of the circuit-breaker</b>   | S00        |
| <b>Size of load feeder</b>   | S00        |
| <b>Insulation voltage</b>  |            |
| <ul style="list-style-type: none"> <li>• with degree of pollution 3 at AC rated value</li> </ul> | 690 V      |
| <b>Surge voltage resistance rated value</b>  | 6 kV       |
| <b>Protection class IP</b>   |            |
| <ul style="list-style-type: none"> <li>• on the front</li> </ul>                                 | IP20       |
| <ul style="list-style-type: none"> <li>• of the terminal</li> </ul>                              | IP20       |
| <b>Shock resistance</b>  |            |
| <ul style="list-style-type: none"> <li>• acc. to IEC 60068-2-27</li> </ul>                       | 6g / 11 ms |

|   |                   |
|---|-------------------|
| <b>Mechanical service life (switching cycles)</b>                 |                   |
| • of contactor typical  | 30 000 000        |
| <b>Type of assignment</b>   | 2                 |
| <b>Type of protection according to ATEX directive 2014/34/EU</b>  | Ex II (2) GD      |
| Certificate of suitability according to ATEX directive 2014/34/EU | DMT 02 ATEX F 001 |

|                                    |                |
|------------------------------------|----------------|
| <b>Ambient conditions</b>          |                |
| <b>Temperature compensation</b>    | -20 ... +60 °C |
| Relative humidity during operation | 10 ... 95 %    |

|   |                   |
|---|-------------------|
| <b>Main circuit</b>   |                   |
| <b>Number of poles for main current circuit</b>                                   | 3                 |
| <b>Design of the switching contact</b>  | electromechanical |
| <b>Adjustable pick-up value current of the current-dependent overload release</b> | 0.9 ... 1.25 A    |
| <b>Operating voltage</b>  |                   |
| • rated value   | 690 V             |
| • at AC-3 rated value maximum   | 690 V             |
| <b>Operating frequency rated value</b>  | 50 ... 60 Hz      |
| <b>Operating current</b>  |                   |
| • at AC-3   |                   |
| — at 400 V rated value  | 1.1 A             |
| <b>Operating power</b>  |                   |
| • at AC-3   |                   |
| — at 400 V rated value  | 370 W             |

|  |      |
|--|------|
| <b>Control circuit/ Control</b>                      |      |
| <b>Type of voltage of the control supply voltage</b> | DC   |
| <b>Control supply voltage at DC</b>                  |      |
| • rated value  | 24 V |
| <b>Holding power of magnet coil at DC</b>            | 4 W  |

|   |     |
|---|-----|
| <b>Auxiliary circuit</b>                  |     |
| <b>Product extension Auxiliary switch</b> | Yes |

|  |                      |
|--|----------------------|
| <b>Protective and monitoring functions</b> |                      |
| <b>Trip class</b>                          | CLASS 10             |
| <b>Design of the overload release</b>      | thermal (bimetallic) |

|   |        |
|---|--------|
| <b>UL/CSA ratings</b>                                   |        |
| <b>Full-load current (FLA) for three-phase AC motor</b> |        |
| • at 480 V rated value                                  | 1.25 A |
| <b>Yielded mechanical performance [hp]</b>              |        |
| • for three-phase AC motor                              |        |
| — at 460/480 V rated value                              | 0.5 hp |

— at 575/600 V rated value

0.5 hp

### Short-circuit protection

|   |           |
|---|-----------|
| <b>Product function Short circuit protection</b>  | Yes       |
| <b>Design of the short-circuit trip</b>   | magnetic  |
| <b>Conditional short-circuit current (I<sub>q</sub>)</b> <ul style="list-style-type: none"><li>• at 400 V acc. to IEC 60947-4-1 rated value</li></ul> | 150 000 A |

### Installation/ mounting/ dimensions

|   |  |
|---|--|
| <b>Mounting position</b>  | vertical   |
| <b>Mounting type</b>  | screw and snap-on mounting onto 35 mm standard mounting rail |
| <b>Height</b>   | 198 mm   |
| <b>Width</b>  | 45 mm  |
| <b>Depth</b>  | 97 mm  |
| <b>Required spacing</b> <ul style="list-style-type: none"><li>• for grounded parts<ul style="list-style-type: none"><li>— forwards 20 mm</li><li>— Backwards 0 mm</li><li>— upwards 50 mm</li><li>— at the side 20 mm</li><li>— downwards 10 mm</li></ul></li><li>• for live parts<ul style="list-style-type: none"><li>— forwards 20 mm</li><li>— Backwards 0 mm</li><li>— upwards 50 mm</li><li>— downwards 10 mm</li><li>— at the side 20 mm</li></ul></li></ul> |  |

### Connections/ Terminals

|   |                         |
|---|-------------------------|
| <b>Type of electrical connection</b> <ul style="list-style-type: none"><li>• for main current circuit</li></ul> | spring-loaded terminals |
|---|-------------------------|

### Safety related data

|  |           |
|--|-----------|
| <b>B10 value</b> <ul style="list-style-type: none"><li>• with high demand rate acc. to SN 31920</li></ul>                        | 1 000 000 |
| <b>Proportion of dangerous failures</b> <ul style="list-style-type: none"><li>• with high demand rate acc. to SN 31920</li></ul> | 73 %      |

### Certificates/ approvals

|                          |                                |                           |
|--------------------------|--------------------------------|---------------------------|
| General Product Approval | For use in hazardous locations | Declaration of Conformity |
|--------------------------|--------------------------------|---------------------------|



[Miscellaneous](#)

|                   |                   |
|-------------------|-------------------|
| Test Certificates | Marine / Shipping |
|-------------------|-------------------|

[Special Test Certificate](#)

[Type Test Certificates/Test Report](#)



|                   |       |         |
|-------------------|-------|---------|
| Marine / Shipping | other | Railway |
|-------------------|-------|---------|



[Confirmation](#)

[Vibration and Shock](#)

## Further information

### Information- and Downloadcenter (Catalogs, Brochures,...)

<https://www.siemens.com/ic10>

### Industry Mall (Online ordering system)

<https://mall.industry.siemens.com/mall/en/en/Catalog/product?mlfb=3RA2110-0KE15-1BB4>

### Cax online generator

<http://support.automation.siemens.com/WW/CAXorder/default.aspx?lang=en&mlfb=3RA2110-0KE15-1BB4>

### Service&Support (Manuals, Certificates, Characteristics, FAQs,...)

<https://support.industry.siemens.com/cs/ww/en/ps/3RA2110-0KE15-1BB4>

### Image database (product images, 2D dimension drawings, 3D models, device circuit diagrams, EPLAN macros, ...)

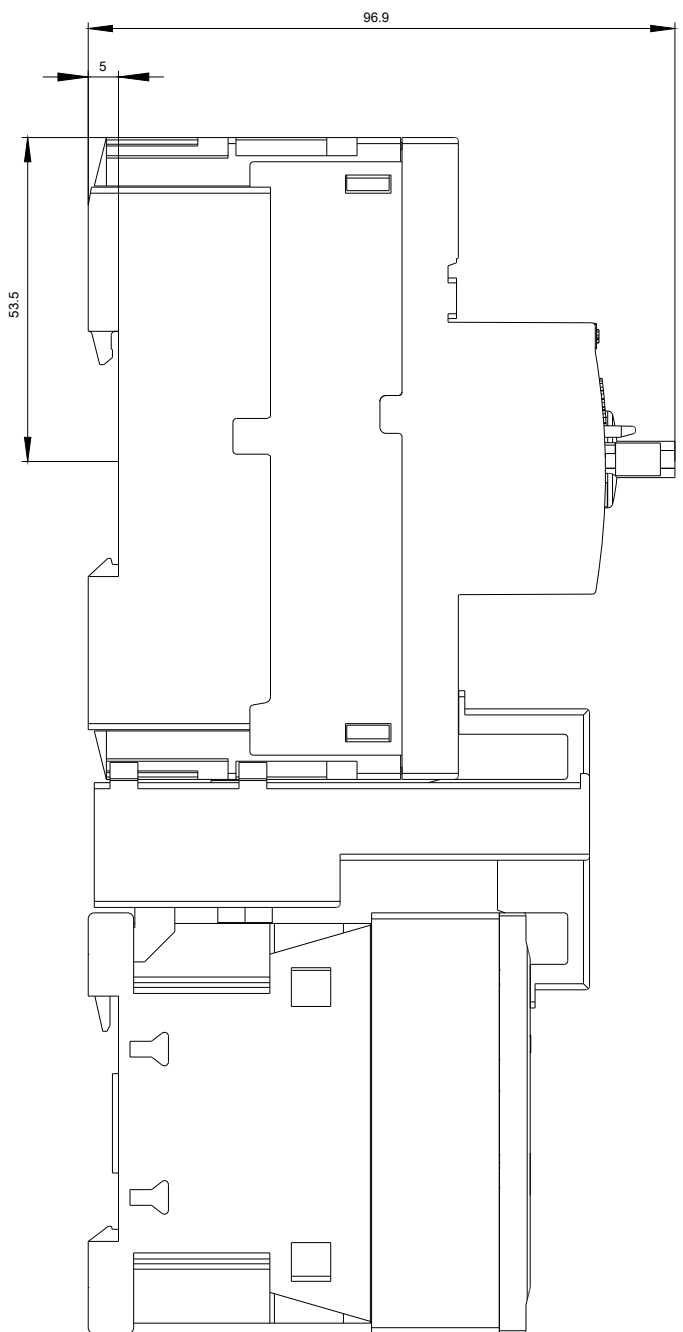
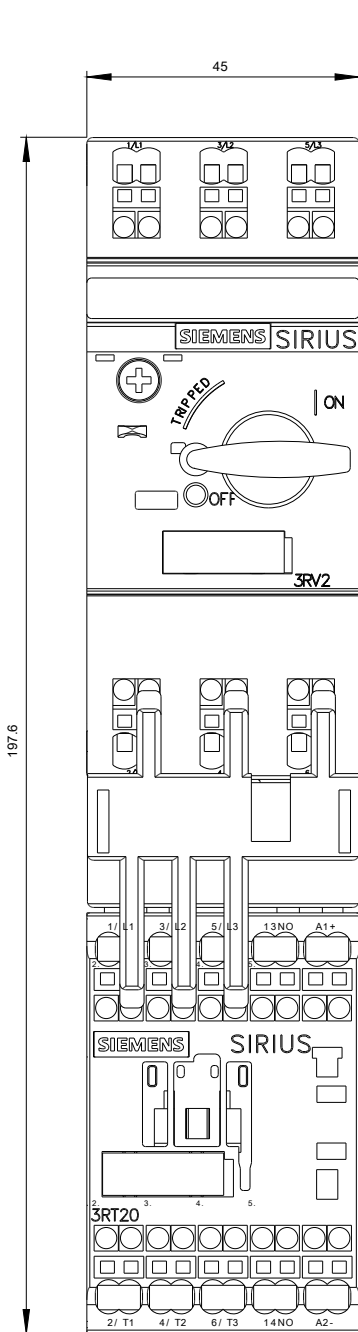
[http://www.automation.siemens.com/bilddb/cax\\_de.aspx?mlfb=3RA2110-0KE15-1BB4&lang=en](http://www.automation.siemens.com/bilddb/cax_de.aspx?mlfb=3RA2110-0KE15-1BB4&lang=en)

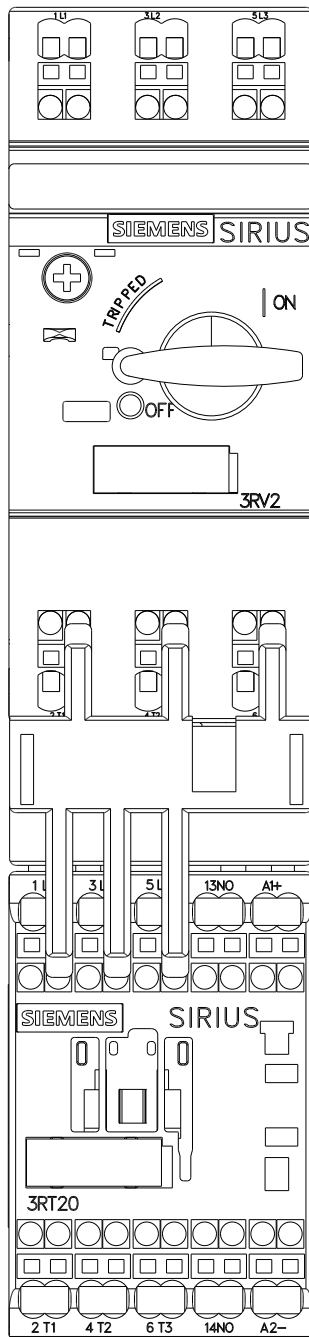
### Characteristic: Tripping characteristics, I<sub>t</sub>, Let-through current

<https://support.industry.siemens.com/cs/ww/en/ps/3RA2110-0KE15-1BB4/char>

### Further characteristics (e.g. electrical endurance, switching frequency)

<http://www.automation.siemens.com/bilddb/index.aspx?view=Search&mlfb=3RA2110-0KE15-1BB4&objecttype=14&gridview=view1>







last modified:

03/06/2020