

SETRON, Switch disconnecter 3LD, main switch, 6-pole, Iu: 25 A, Operating power / at AC-23 A at 400 V: 9.5 kW, floor mounting with door coupling, rotary operating mechanism, black, 4-hole mounting of the handle



| Model  |                                   |
|--|-----------------------------------|
| Product brand name   | SETRON                            |
| Product designation  | 3LD Switch disconnecter           |
| Design of the product  | Main switch                       |
| Display version / for switch position indicator manual operation                       | 1 ON - 0 OFF                      |
| Design of the operating mechanism  | Short rotary knob                 |
| Design of handle   | rotary operating mechanism, black |
| Type of the driving mechanism / motor drive  | No                                |
| General technical data   |                                   |
| Number of poles  | 6                                 |
| Type of device   | fixed mounting                    |
| Type of switch   | Floor mounting with door coupling |
| Size of switch disconnecter  | 2                                 |
| Electrical endurance (switching cycles) / at AC-23 A / at 690 V                        | 6 000                             |
| I2t value / with closed switch / at 690 V / for combination switch + gG fuse / maximum | 4 kA2.s                           |

|  |                      |
|--|----------------------|
| Let-through I <sub>2t</sub> value / with closed switch / at 440 V / for combination switch + gG fuse / maximum | 4 kA <sup>2</sup> .s |
| Mechanical service life (switching cycles) / typical   | 100 000              |
| Operating frequency / maximum  | 50 1/h               |

### Voltage

|   |       |
|---|-------|
| Insulation voltage / rated value  | 690 V |
| Surge voltage resistance / rated value  | 6 kV  |
| Current / at AC / rated value   | 25 A  |
| Operating voltage <ul style="list-style-type: none"> <li>• at AC / at 50/60 Hz / rated value</li> </ul> | 690 V |

### Protection class

|                                    |      |
|------------------------------------|------|
| Protection class IP                | IP65 |
| Protection class IP / on the front | IP65 |

### Dissipation

|  |                |
|--|----------------|
| Power loss [W] <ul style="list-style-type: none"> <li>• for rated value of the current / at AC / in hot operating state / per pole</li> <li>• per conductor / typical</li> </ul> | 1.1 W<br>1.1 W |
|--|----------------|

### Current

|  |  |
|--|--|
| Operating current <ul style="list-style-type: none"> <li>• at AC-23 A / at 690 V / rated value</li> <li>• at AC-23 A / at 400 V / rated value</li> <li>• at AC-22 A / at 690 V / rated value</li> <li>• at AC-21 / at 690 V / rated value</li> <li>• at AC-21 A / at 240 V / rated value</li> <li>• at AC-21 A / at 440 V / rated value</li> <li>• at AC-22 A / at 240 V / rated value</li> <li>• at AC-22 A / at 440 V / rated value</li> <li>• at AC-23 A / at 240 V / rated value</li> <li>• at AC-23 A / at 440 V / rated value</li> </ul> | 11 A<br>20 A<br>25 A<br>25 A<br>25 A<br>25 A<br>25 A<br>25 A<br>20 A<br>20 A |
| Continuous current <ul style="list-style-type: none"> <li>• rated value</li> <li>• at 40 °C / rated value</li> <li>• at 45 °C / rated value</li> <li>• at 50 °C / rated value</li> <li>• at 55 °C / rated value</li> </ul>   | 25 A<br>25 A<br>25 A<br>25 A<br>25 A   |
| Operating current / of upstream fuse / rated value   | 25 A   |
| Let-through current / with closed switch <ul style="list-style-type: none"> <li>• at 440 V / for combination switch + gG fuse / maximum</li> </ul>   | 3.5 kA   |

|   |        |
|---|--------|
| <ul style="list-style-type: none"> <li>• at 690 V / for combination switch + gG fuse / maximum permissible</li> </ul> | 3.5 kA |
| Short-time withstand current (I <sub>cw</sub> )   |        |
| <ul style="list-style-type: none"> <li>• limited to 1 s / rated value</li> </ul>                                      | 640 A  |
| <ul style="list-style-type: none"> <li>• at 690 V / limited to 1 s / rated value</li> </ul>                           | 640 A  |

### Main circuit

|   |        |
|---|--------|
| Operating frequency   |        |
| <ul style="list-style-type: none"> <li>• initial value</li> </ul>                                     | 50 Hz  |
| <ul style="list-style-type: none"> <li>• Full-scale value</li> </ul>                                  | 60 Hz  |
| Operating power   |        |
| <ul style="list-style-type: none"> <li>• at AC-23 A / at 240 V / rated value</li> </ul>               | 5 kW   |
| <ul style="list-style-type: none"> <li>• at AC-23 A / at 400 V / at 50/60 Hz / rated value</li> </ul> | 9.5 kW |
| <ul style="list-style-type: none"> <li>• at AC-23 A / at 400 V / rated value</li> </ul>               | 9.5 kW |
| <ul style="list-style-type: none"> <li>• at AC-23 A / at 440 V / rated value</li> </ul>               | 9.5 kW |
| <ul style="list-style-type: none"> <li>• at AC-23 A / at 690 V / rated value</li> </ul>               | 9.5 kW |
| <ul style="list-style-type: none"> <li>• at AC-3 / at 240 V / rated value</li> </ul>                  | 4 kW   |
| <ul style="list-style-type: none"> <li>• at AC-3 / at 400 V / rated value</li> </ul>                  | 7.5 kW |
| <ul style="list-style-type: none"> <li>• at AC-3 / at 690 V / rated value</li> </ul>                  | 7.5 kW |
| Operating current / rated value   | 25 A   |

### Auxiliary circuit

|   |       |
|---|-------|
| Number of CO contacts / for auxiliary contacts              | 0     |
| Number of NC contacts / for auxiliary contacts              | 0     |
| Number of NO contacts / for auxiliary contacts              | 0     |
| Operating voltage / of auxiliary contacts / at AC / maximum | 500 V |
| Continuous current / of the auxiliary contact / rated value | 10 A  |
| Insulation voltage / of the auxiliary switch / rated value  | 500 V |

### Suitability

|   |     |
|---|-----|
| Suitability for use   |     |
| <ul style="list-style-type: none"> <li>• Main switch</li> </ul>               | Yes |
| <ul style="list-style-type: none"> <li>• switch disconnecter</li> </ul>       | Yes |
| <ul style="list-style-type: none"> <li>• EMERGENCY OFF switch</li> </ul>      | No  |
| <ul style="list-style-type: none"> <li>• safety switch</li> </ul>             | Yes |
| <ul style="list-style-type: none"> <li>• maintenance/repair switch</li> </ul> | Yes |

### Appearance

|                                  |       |
|----------------------------------|-------|
| Color / of the actuating element | black |
|----------------------------------|-------|

### Product details

|  |     |
|--|-----|
| Product function / can be locked into OFF position | Yes |
| Number of bracket locks / maximum                  | 3   |

|   |                                     |
|---|-------------------------------------|
| Hasp thickness / of the bracket locks / minimum                                   | 4 mm                                |
| Hasp thickness / of the bracket locks / maximum                                   | 8 mm                                |
| <b>Short circuit</b>  |                                     |
| Conditional short-circuit current / with line-side fuse protection                |                                     |
| • at 690 V / by gG fuse / rated value   | 50 kA                               |
| Number of connectable NC contacts / for auxiliary contacts / attachable / maximum | 3                                   |
| Number of connectable NO contacts / for auxiliary contacts / attachable / maximum | 5                                   |
| Number of connectable CO contacts / for auxiliary contacts / attachable / maximum | 0                                   |
| <b>Connections</b>  |                                     |
| AWG number / as coded connectable conductor cross section / solid                 |                                     |
| • maximum   | 8                                   |
| • minimum   | 14                                  |
| Type of electrical connection   |                                     |
| • for main current circuit  | box terminal                        |
| • for auxiliary contacts  | connection terminals                |
| <b>Requirements</b>   |                                     |
| Design of the fuse link   |                                     |
| • for short-circuit protection of the main circuit / required                     | fuse gL/gG: 25 A                    |
| • for short-circuit protection of the auxiliary switch / required                 | fuse gL/gG: 10 A                    |
| <b>Mechanical Design</b>  |                                     |
| Height  | 84 mm                               |
| Width   | 67 mm                               |
| Depth   | 429.5 mm                            |
| Mounting type   | Built-in unit fixed-mounted version |
| Mounting type   |                                     |
| • front mounting with 4-hole attachment   | Yes                                 |
| • front mounting with central attachment  | No                                  |
| • rail mounting   | Yes                                 |
| Net weight  | 588 g                               |
| <b>Environmental conditions</b>   |                                     |
| Ambient temperature / during operation  |                                     |
| • minimum   | -25 °C                              |
| • maximum   | 55 °C                               |
| Ambient temperature / during storage / minimum                                    | -25 °C                              |

## Certificates

### Reference code

- acc. to DIN EN 61346-2 S
- acc. to DIN EN 81346-2 SF

### General Product Approval

### Test Certificates



[Miscellaneous](#)

[Special Test Certificate](#)

### Shipping Approval

### other



[Environmental Confirmations](#)

## Further information

### Information- and Downloadcenter (Catalogs, Brochures,...)

<http://www.siemens.com/lowvoltage/catalogs>

### Industry Mall (Online ordering system)

<https://mall.industry.siemens.com/mall/en/en/Catalog/product?mlfb=3LD2113-3VK51>

### Service&Support (Manuals, Certificates, Characteristics, FAQs,...)

<https://support.industry.siemens.com/cs/ww/en/ps/3LD2113-3VK51>

### Image database (product images, 2D dimension drawings, 3D models, device circuit diagrams, ...)

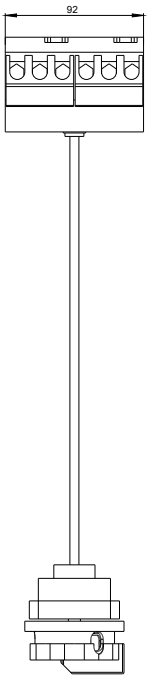
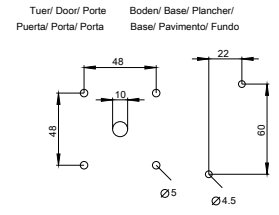
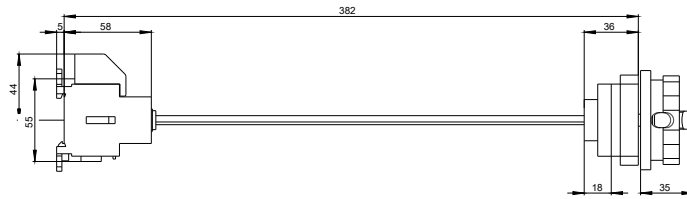
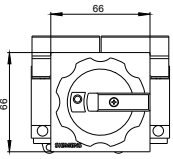
[http://www.automation.siemens.com/bilddb/cax\\_en.aspx?mlfb=3LD2113-3VK51](http://www.automation.siemens.com/bilddb/cax_en.aspx?mlfb=3LD2113-3VK51)

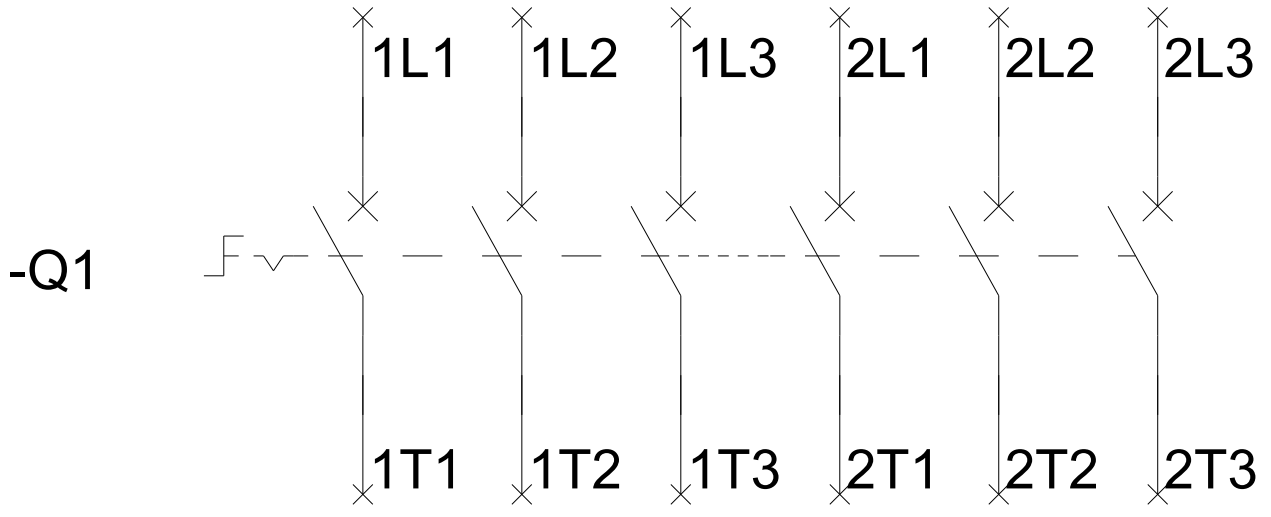
### CAX-Online-Generator

<http://www.siemens.com/cax>

### Tender specifications

<http://www.siemens.com/specifications>





# -CI

