

6

5

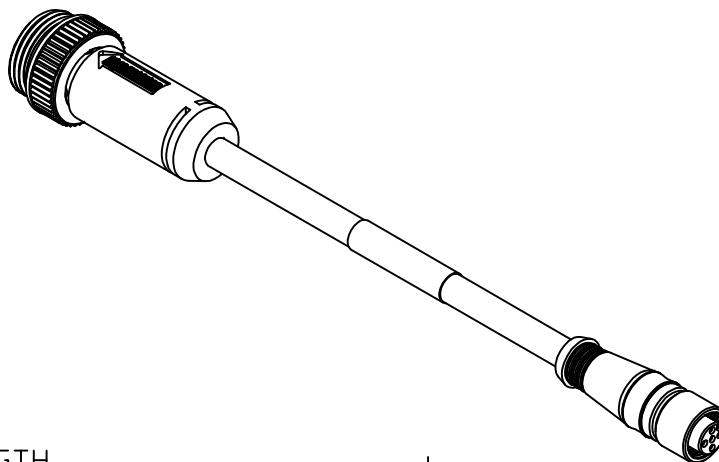
4

3

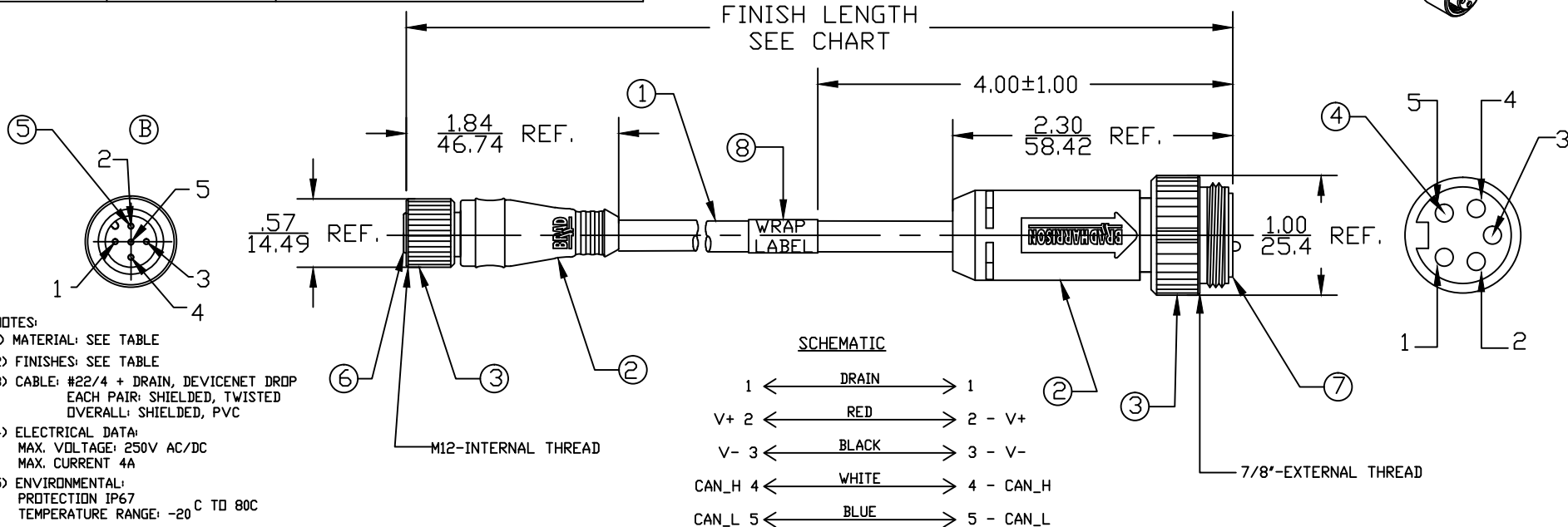
2

1

MATERIAL NUMBER	ENGINEERING NUMBER	FINISHED LENGTH
1300390154	DND21A-M003	.98' +.75" -0 [3M +19.1 -0]
1300390155	DND21A-M005	1.64' +1.75" -0 [5M +44.5 -0]
1300390157	DND21A-M010	3.28' +2.19" -0 [10M +55.6 -0]
1300390159	DND21A-M020	6.56' +3.50" -0 [2.0M +88.9 -0]
1300390164	DND21A-M030	9.84' +3.50" -0 [3.0M +88.9 -0]
1300390165	DND21A-M040	13.12' +6.50" -0 [4.0M +165.1 -0]
1300390166	DND21A-M050	16.40' +6.50" -0 [5.0M +165.1 -0]
1300390167	DND21A-M060	19.69' +6.50" -0 [6.0M +165.1 -0]
1300390032	DND21A-M080	26.25' +12.50" -0 [8.0M +317.5 -0]
1300390169	DND21A-M100	32.81' +12.50" -0 [10.0M +317.5 -0]
1300390518	DND21A-M150	49.21' +24.50" -0 [15.0M +622.3 -0]
1300390170	DND21A-M200	65.62' +24.50" -0 [20.0M +622.3 -0]



FINISH LENGTH
SEE CHART



NOTES:

- 1) MATERIAL: SEE TABLE
- 2) FINISHES: SEE TABLE
- 3) CABLE: #22/4 + DRAIN, DEVICENET DROP EACH PAIR: SHIELDED, TWISTED OVERALL: SHIELDED, PVC
- 4) ELECTRICAL DATA:
MAX. VOLTAGE: 250V AC/DC
MAX. CURRENT 4A
- 5) ENVIRONMENTAL:
PROTECTION IP67
TEMPERATURE RANGE: -20°C TO 80°C
- 6) WRAP LABEL IS MARKED WITH P/N, DATE CODE, VOLTAGE & AMPERAGE.
- 7) ASSEMBLY IS RoHS COMPLIANT.

ITEM	QTY.	DESCRIPTION	MATERIAL	FINISH
8	1	LABEL	PLASTIC FILM	BLACK/YELLOW
7	1	INSERT(MID)	PVC	GREY
6	1	INSERT(MICRO)	NYLON	BLACK
5	5	PIN CONTACT	COPPER ALLOY	GOLD PLATED
4	5	SOCKET CONTACT	COPPER ALLOY	GOLD PLATED
3	2	COUPLING NUT	ZINC DIE-CAST	BLACK
2	1	OVERMOLD	PVC	GRAY
1	1	DEVICENET DROP CABLE	PVC JACKET	GRAY

REV	DESCRIPTION
B	UPDATED PIN NUMBERS EC NO: IFC2016-0705 DRWN: GGUSTAFS 2015/11/06 CHKD: MZELIN 2015/12/22 APPR: BWOODMAN 2010/01/20

QUALITY SYMBOLS
▽=0
▽C=0

GENERAL TOLERANCES (UNLESS SPECIFIED)	
	mm
4 PLACES	±---
3 PLACES	±.005
2 PLACES	±0.13
1 PLACE	±0.25
ANGULAR ±1/2°	
DRAFT WHERE APPLICABLE MUST REMAIN WITHIN DIMENSIONS	

DIMENSION STYLE	
IN/MM	
DRAWN BY	DATE
CHECKED BY	DATE
APPROVED BY	DATE
JFMURPHY	2010/01/20
MATERIAL NO.	SEE CHART
SIZE	A

SCALE	DESIGN UNITS	THIRD ANGLE PROJECTION
1:1	INCH	☉
TITLE		
MINIRO/MIN CHANGE D-NET 5P MA/FE ST/ST DROP 22/4AWG +DRAIN GREY PVC		
MOLEX INCORPORATED		
DOCUMENT NO.		SHEET NO.
SD-130039-020		1 OF 1
THIS DRAWING CONTAINS INFORMATION THAT IS PROPRIETARY TO MOLEX INCORPORATED AND SHOULD NOT BE USED WITHOUT WRITTEN PERMISSION		

6

5

4

3

2

1