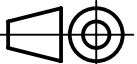



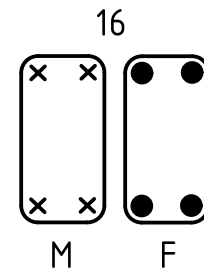
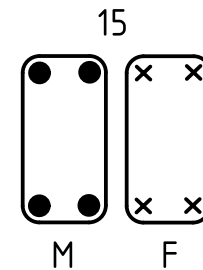
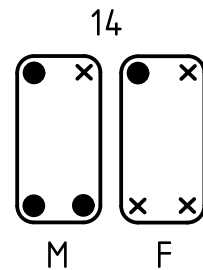
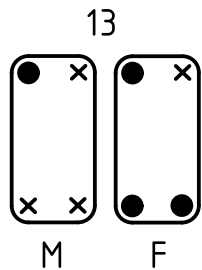
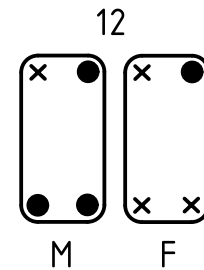
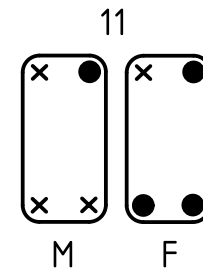
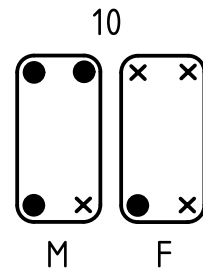
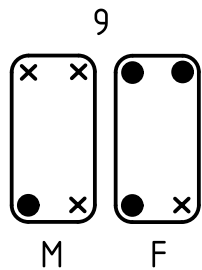
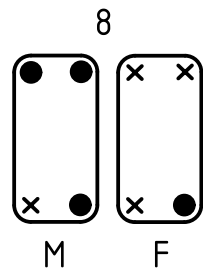
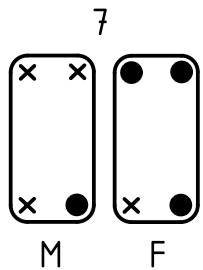
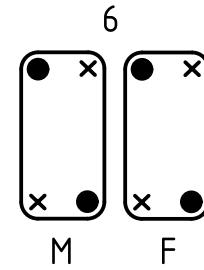
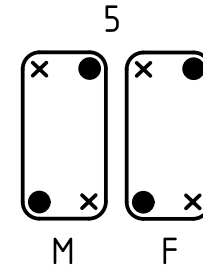
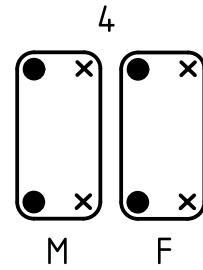
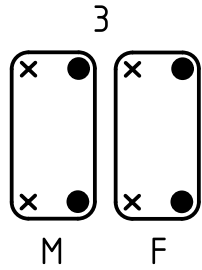
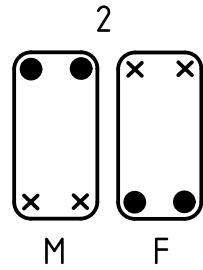
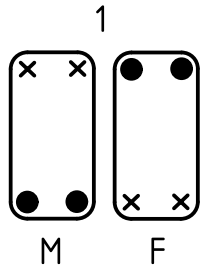
arrangement of pins and bushes see page 2 and 3

 All Dimensions in mm Original Size DIN A4		Scale 2:1	Free size tol.		Ref.
 All rights reserved Department EL PD - DE		Created by FINKEV	Inspected by GERB	Standardisation TIEMANNA	Date 2015-09-07
HARTING Electric GmbH & Co. KG D-32339 Espelkamp		Title guide pin / bush			State Final Release
09 33 000 9909      guide bush 09 33 000 9908      guide pin Part No              description		Type TB	Number 09 33 000 990X		Doc-Key / ECM-Nr. 100087510/UGD/005/B 500000093566 Rev. B      Page 1/3

1 2 3 4 5 6

# coding system with guide pins and bushes

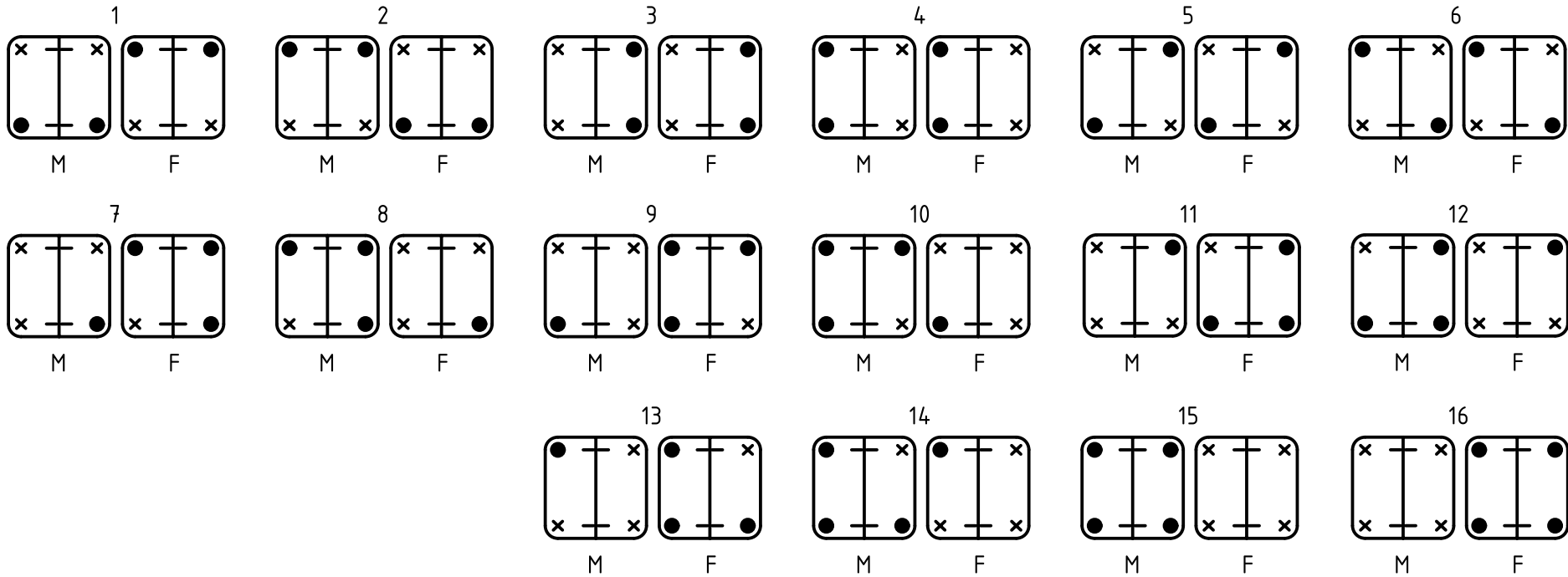
for hoods/housings with one frame or hinged frame



- F - frame or hinged frame for hoods
- M - frame or hinged frame for housings
- x - guide pins
- - guide bushes

	All rights reserved	Created by FINKEV	Inspected by GERB	Standardisation TIEMANNA	Date 2015-09-07	State Final Release	
	Department EL PD - DE	Title guide pin / bush				Doc-Key / ECM-Nr. 100087510/UGD/005/B 500000093566	
HARTING Electric GmbH & Co. KG D-32339 Espelkamp		Type TB	Number 09 33 000 990X			Rev. B	Page 2/3

coding system with code pins  
for hoods/housings with two frame or two hinged frame



- F - frame or hinged frame for hoods
- M - frame or hinged frame for housings
- × - guide pins
- - guide bushes
- - mounting screw

	All rights reserved	Created by FINKEV	Inspected by GERB	Standardisation TIEMANNA	Date 2015-09-07	State Final Release	
	Department EL PD - DE	Title guide pin / bush				Doc-Key / ECM-Nr. 100087510/UGD/005/B 500000093566	
HARTING Electric GmbH & Co. KG D-32339 Espelkamp		Type TB	Number 09 33 000 990X			Rev. B	Page 3/3