

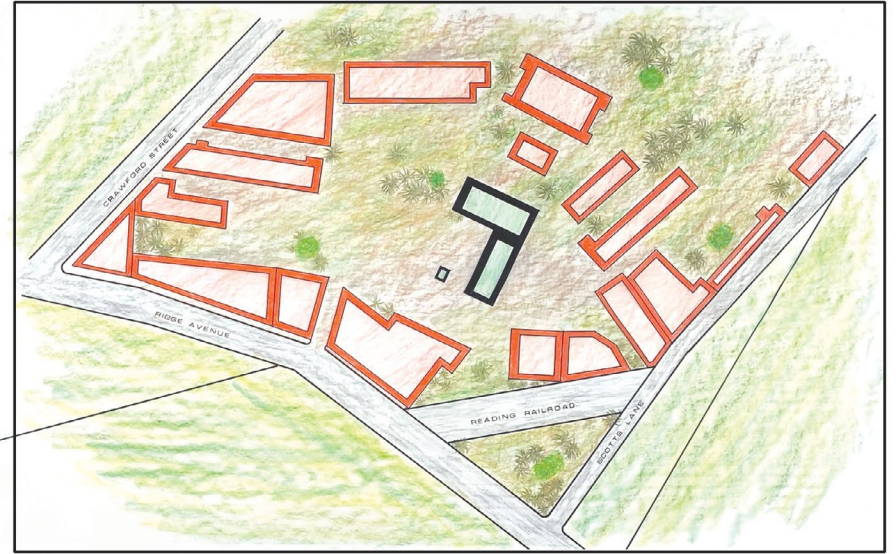
GATEWAYS

A COMMUNITY FOR SENIOR LIVING

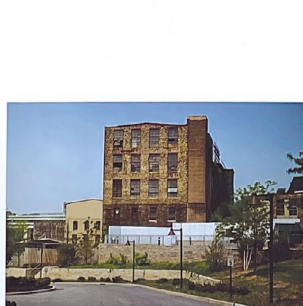




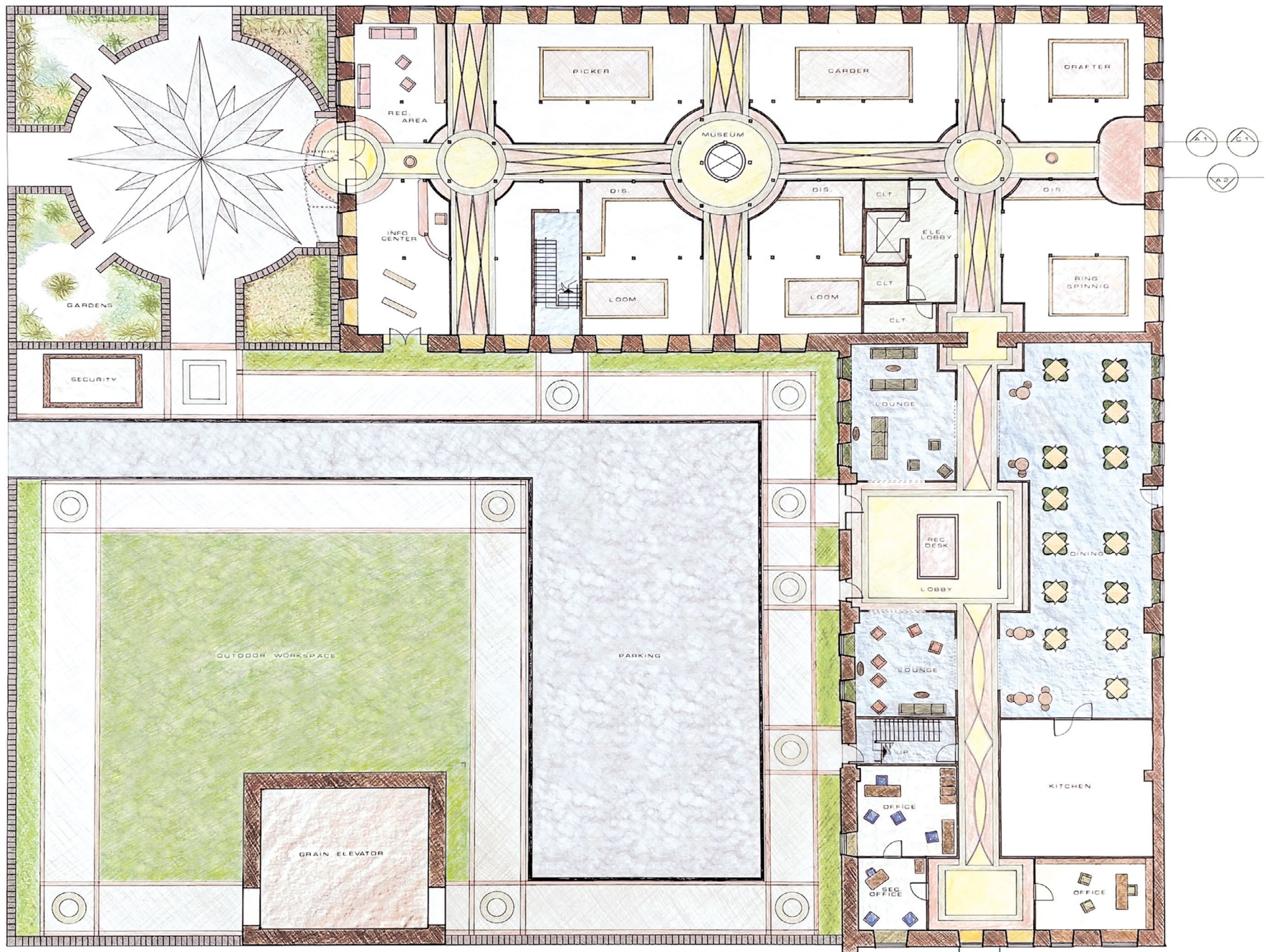
PHILADELPHIA



BUILDING SITE

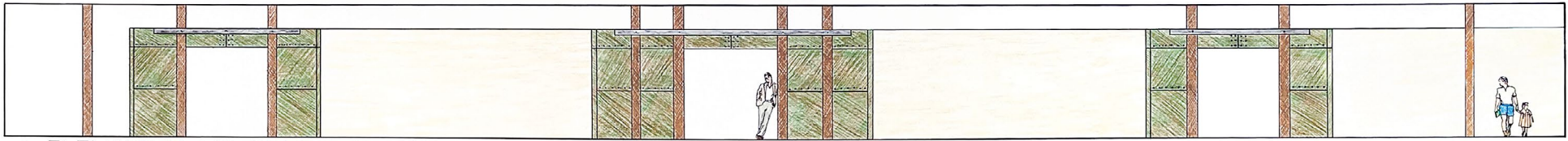


SITE PLAN

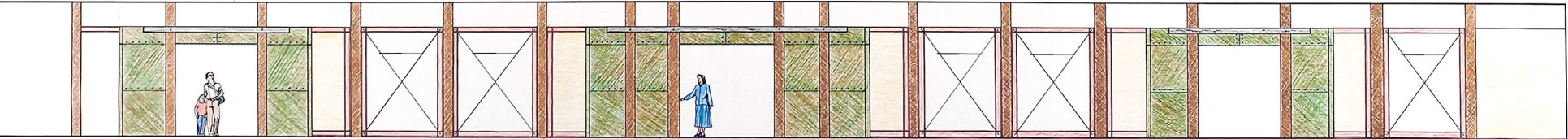
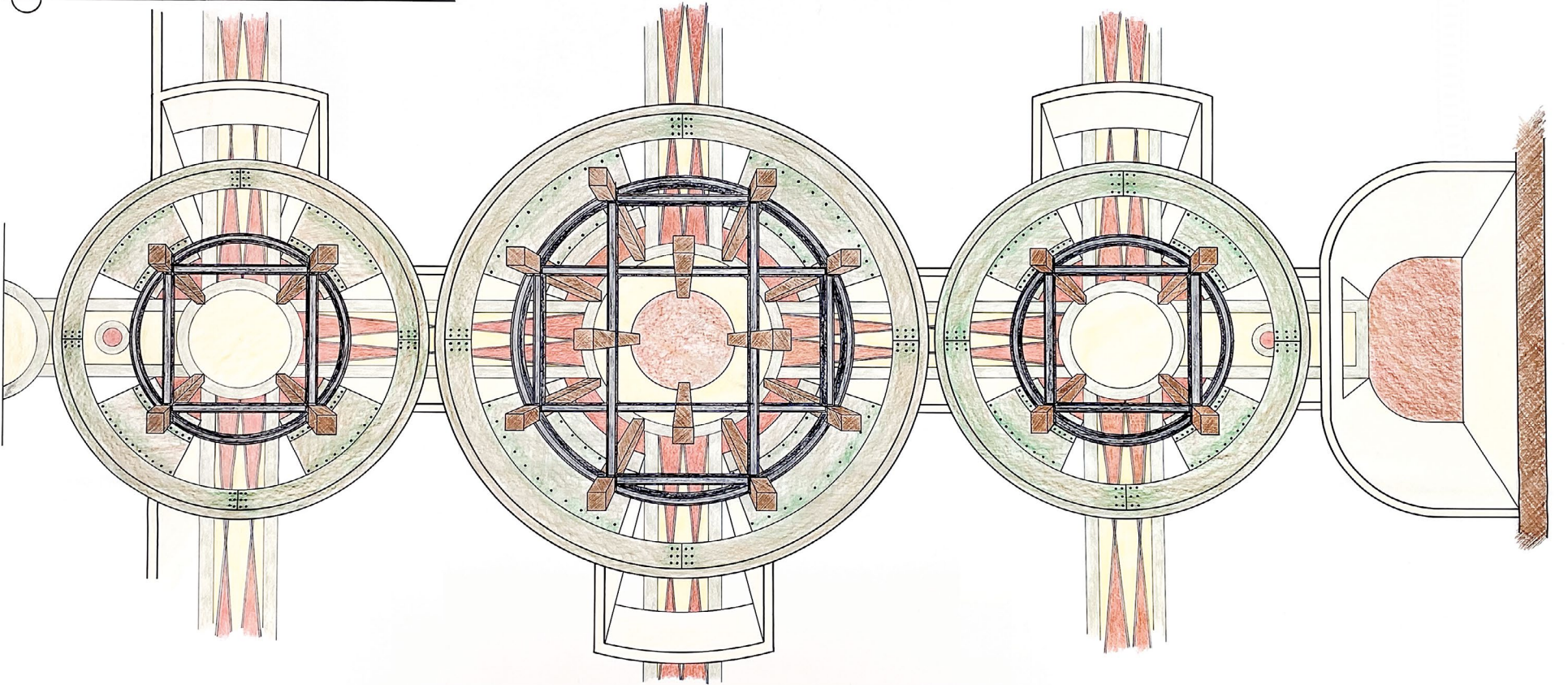


FIRST FLOOR PLAN

1/8" = 1'-0"

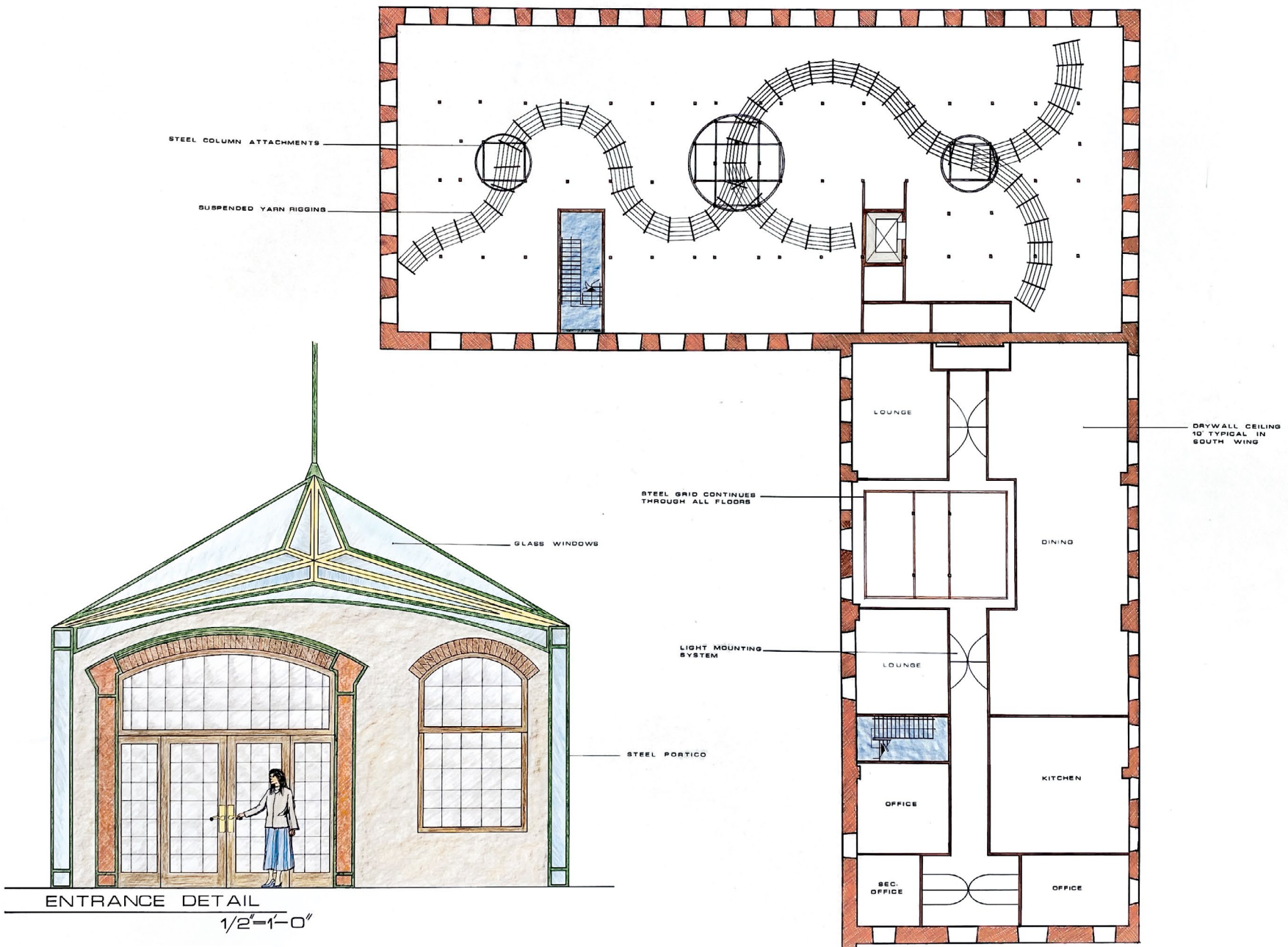


4.2 ELEVATION OF SOUTH WALL

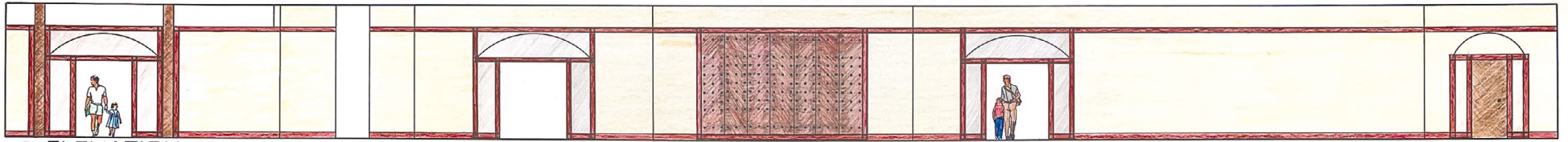


4.2 ELEVATION OF NORTH WALL

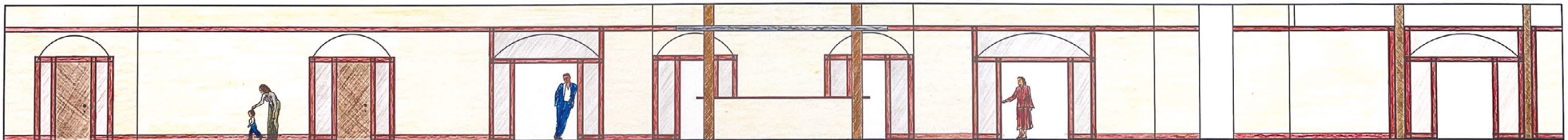
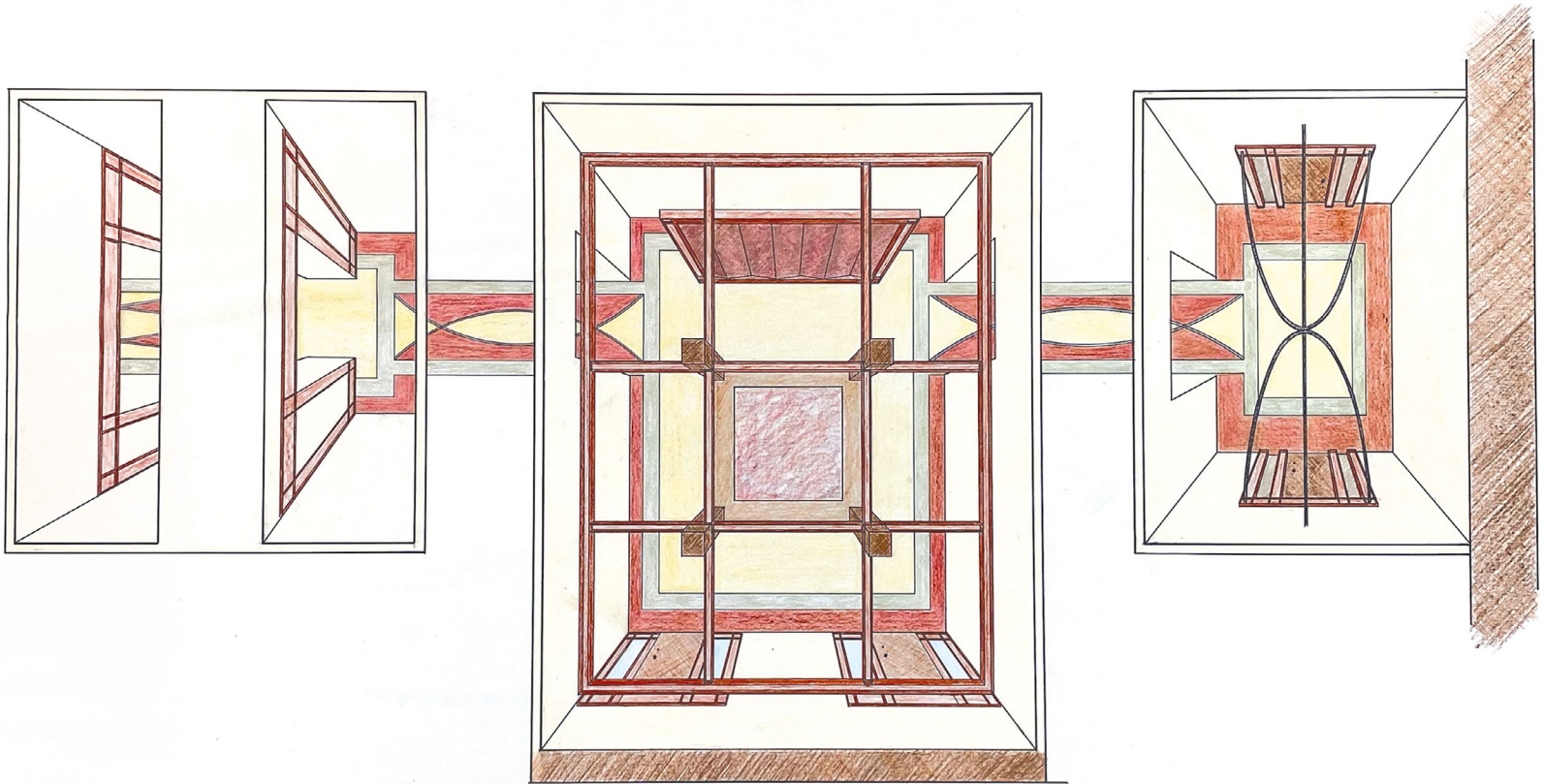
MUSEUM CORRIDOOR
1/4"=1'-0"



1ST FLOOR CEILING PLAN
 1/8"=1'-0"



1-1
ELEVATION OF EAST WALL

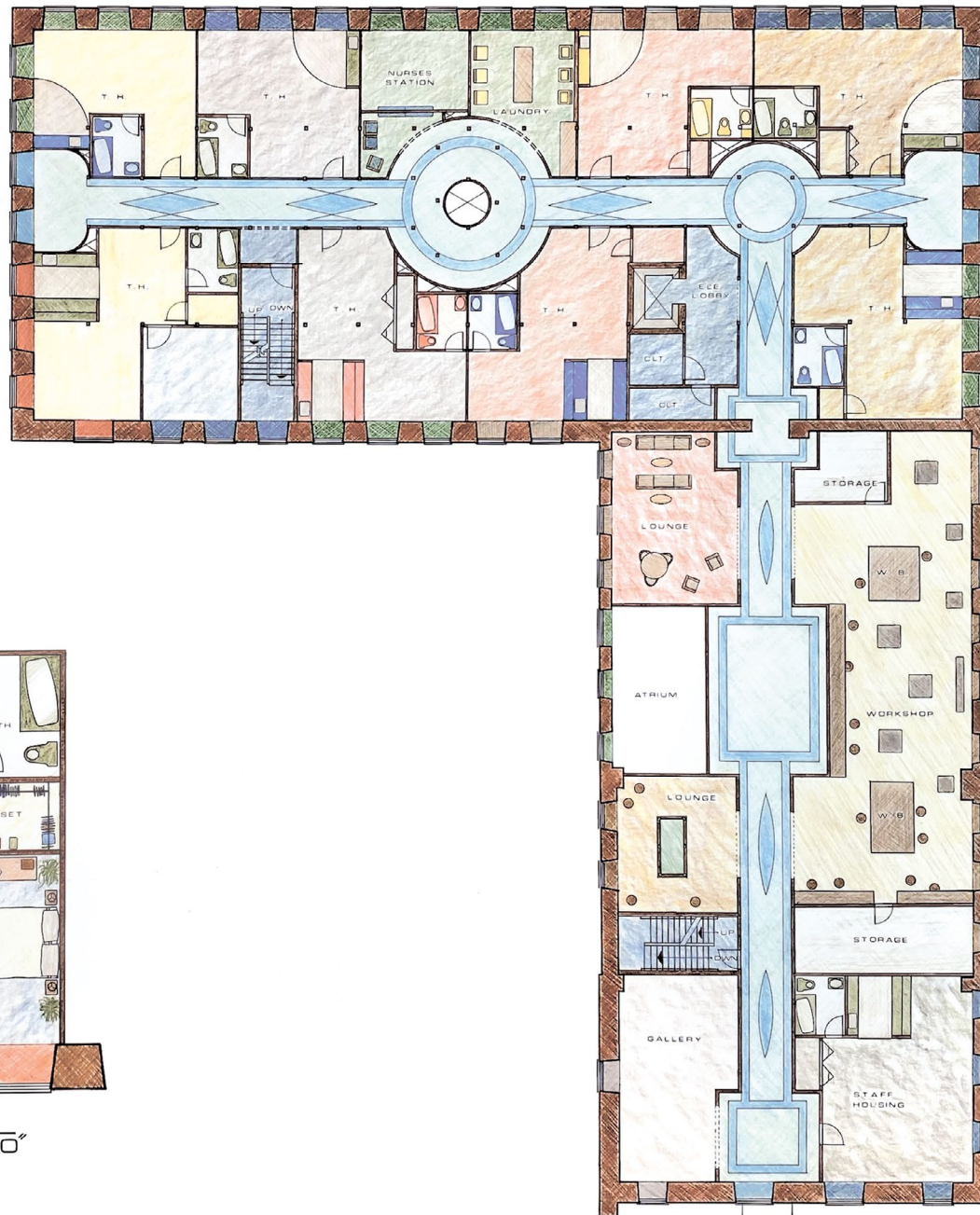


2-2
ELEVATION OF WEST WALL

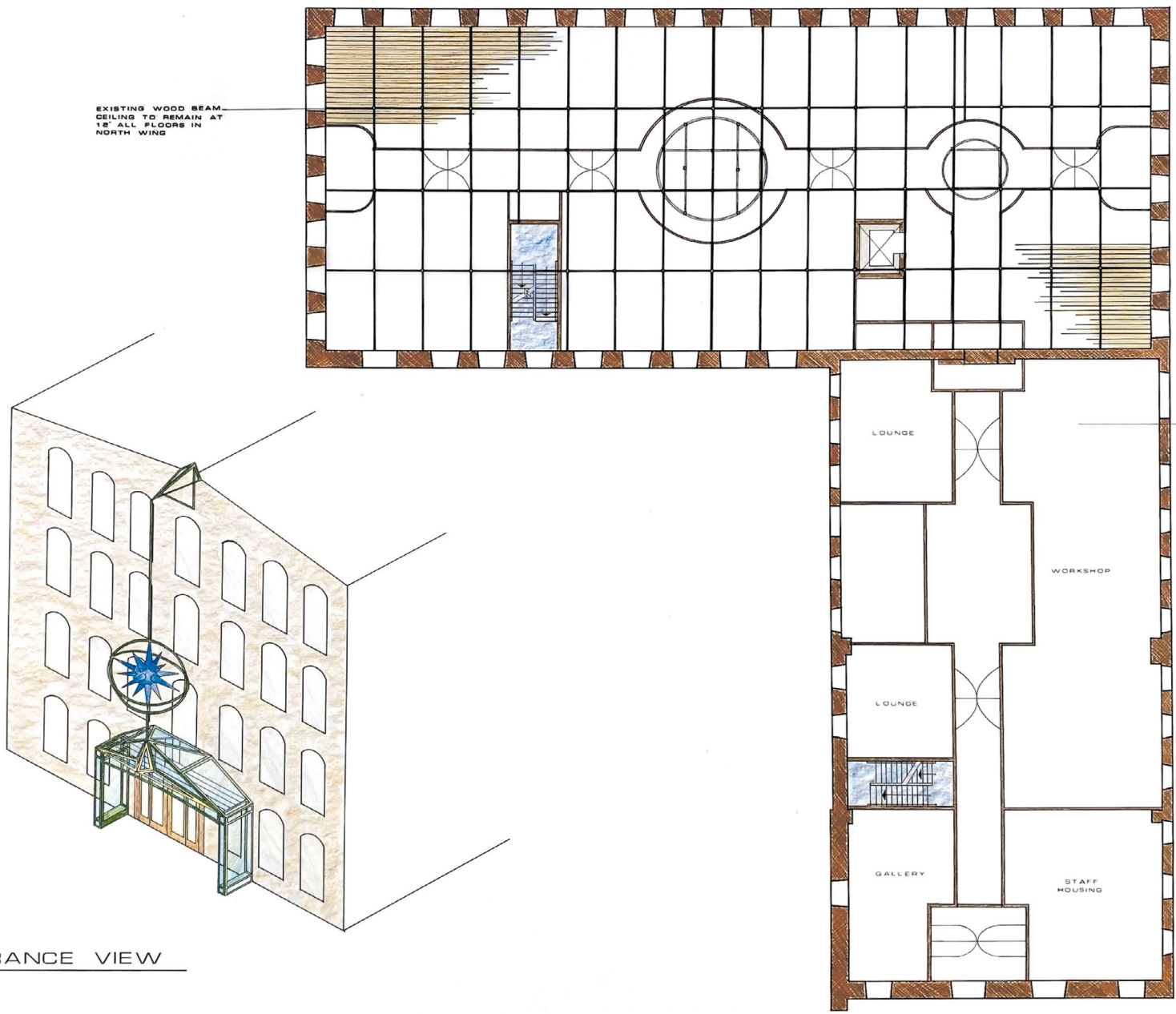
LOUNGE & DINNING CORRIDOOR
1/4" = 1'-0"



SAMPLE HOUSING UNIT
 $\frac{1}{4}''=1'-0''$



SECOND FLOOR PLAN
 $\frac{1}{8}''=1'-0''$

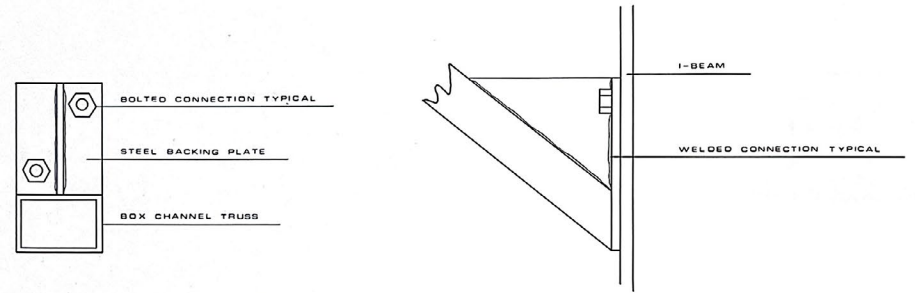
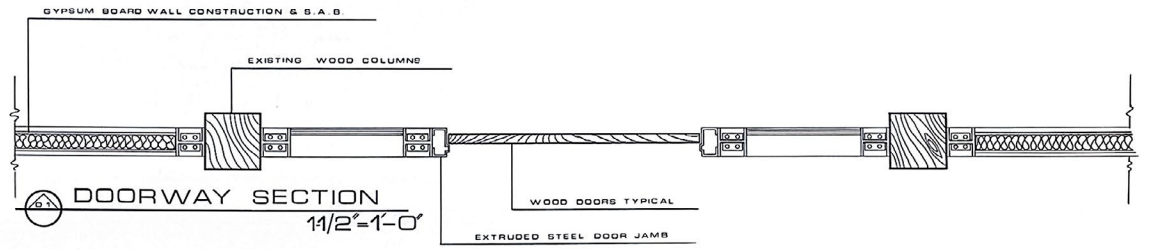
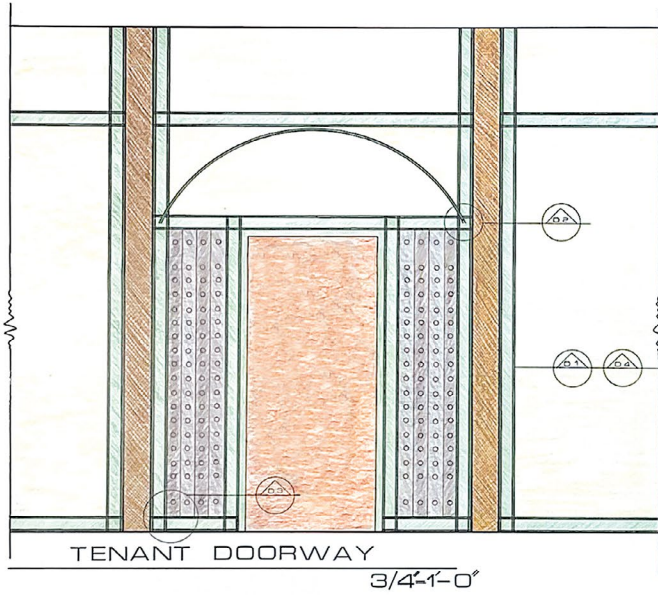


EXISTING WOOD BEAM
CEILING TO REMAIN AT
18' ALL FLOORS IN
NORTH WING

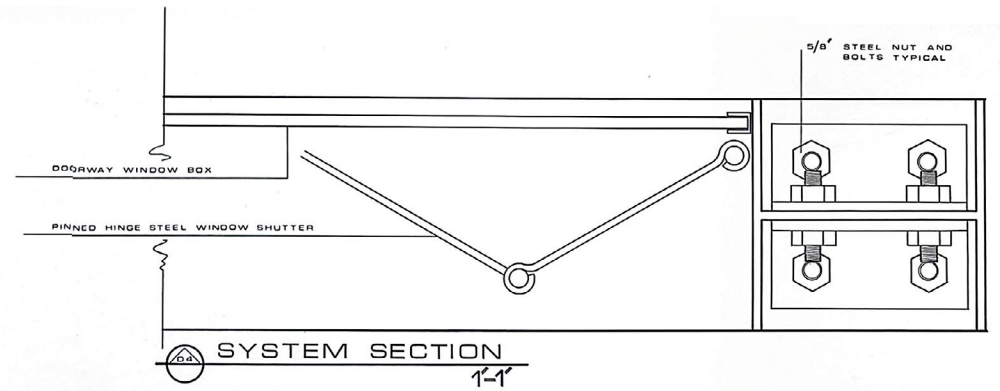
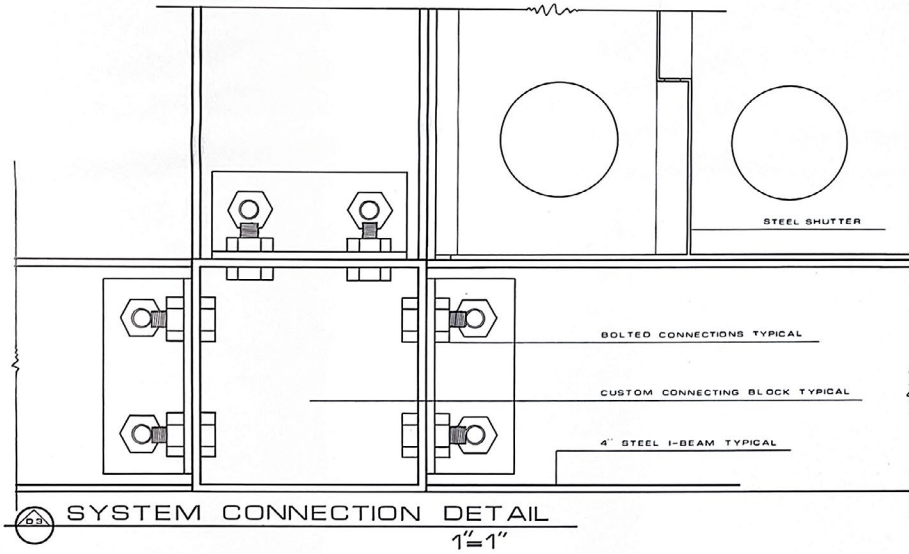
DRYWALL CEILING
10' TYPICAL FOR
SOUTH WING AND
364 FLOOR.

ENTRANCE VIEW

2ND FLOOR CEILING PLAN
1/8" = 1'-0"



① LIGHTING TRUSS
DETAILS
1'-1"



DETAILS