

Kit Content

	36rxn	
Syringe	36	set
Elution Tube	36	pcs
AD10400 Cartridge	36	set
AD10400 Column Set	36	set
AD10400 Tip Set	36	set
EtOH Tube	36	pcs
Sample Tube	36	pcs
Proteinase K	150	mg
PK Solvent	20	ml

Kit Storage

Upon arrival,

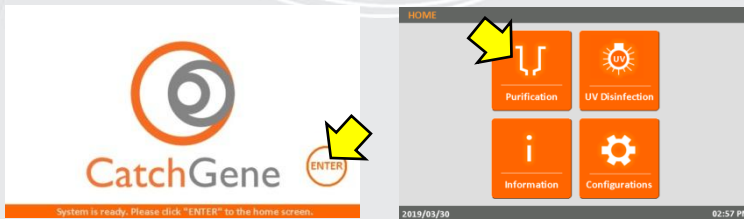
1. Please store **Proteinase K** at **-20 °C** for long term storage.
2. Solvent and consumables, please store at 15-25 °C.

Kit Preparation

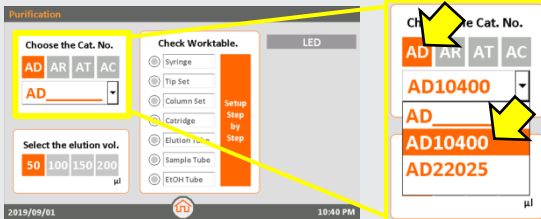
1. **Prepare 10 mg/ml Proteinase K**
For 150 mg Proteinase K, please add 15 ml PK Solvent into tube and vortex thoroughly for dissolving. After dissolving into solvent, please store in 4°C for 6 month or -20°C for 1 year.

Step by Step to start a AD10400 Purification Run

1. On the **Start** screen: Click "ENTER" button to enter the HOME screen.
2. On the **HOME** screen: Click "Purification" icon to start a purification run.

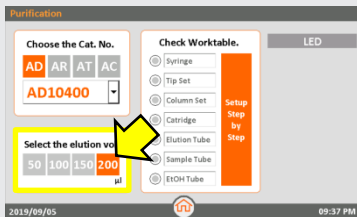


3. Please choose **Cat. No.**



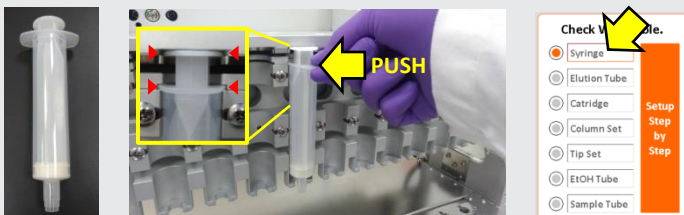
Please click "AD"
Then choose "AD10400"
For iCatcher® DNA 4000 Kit

4. Choose **Elution Vol.**



We suggest to elute in **200µl** for iCatcher® DNA 4000 Kit.

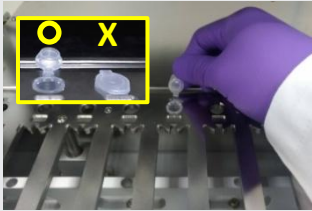
5. Insert the **Syringe** into the groove of Syringe Seat and push it to the end.



Check the **Syringe**.

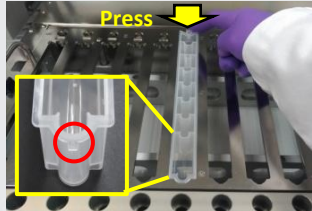
FOR RESEARCH USE ONLY

6. Labeling, then open the lid and place the **Elution Tube** on the Elution Tube position.



Check the **Elution Tube**.

7. Insert the front protrude part of **Cartridge** into Cartridge position and press the bottom down. Then remove the foil.



Check the **Cartridge**.

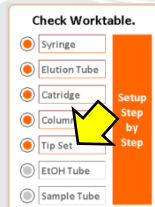
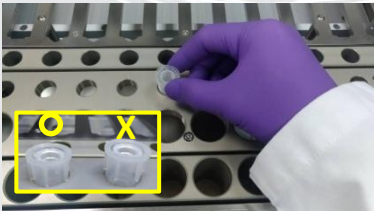
Important! Please must remove the foil before running a protocol.

8. Insert **Column Set** into Column Set position and press into bottom.



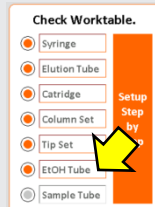
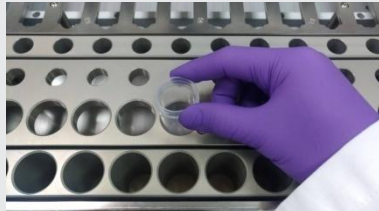
Check the **Column Set**.

9. Place **Tip Set** on Tip Set position and press into bottom.



Check the **Tip Set**.

10. Add **24 ml** 100% EtOH into **EtOH Tube** and place on the EtOH Tube position.

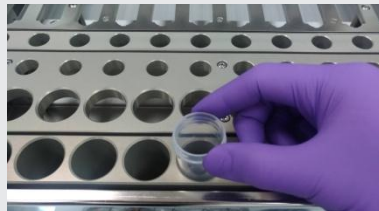


Check the **EtOH Tube**.

Add **24 ml** 100% EtOH into **EtOH Tube**

11. Prepare sample as below,

1. Add 400 μ l Proteinase K (10 mg/ml) into the bottom of Sample Tube.
2. Transfer 4ml of whole blood sample into the Sample Tube.
3. Load the **Sample Tube** into the Sample Tube position of iCatcher (no need to mix or pipette it).



Check the **Sample Tube**.

Click "**Go**" to start purification.