

## Kit Content

	36rxn		
Syringe	36	set	
Elution Tube	36	pcs	
AD10025 Cartridge	36	set	
AD10025 Column Set	36	set	
AD10025 Tip Set	36	set	
EtOH Tube	36	pcs	
Sample Tube	36	pcs	
Proteinase K	11	mg	
PK Solvent	1.5	ml	

## Kit Storage

Upon arrival,

1. Please store **Proteinase K** at **-20 °C** for long term storage.
2. Solvent and consumables, please store at 15-25 °C.

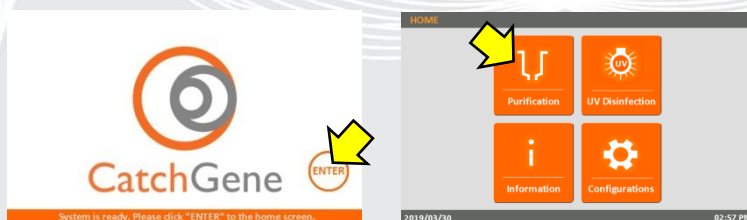
## Kit Preparation

### 1. Prepare 10 mg/ml Proteinase K

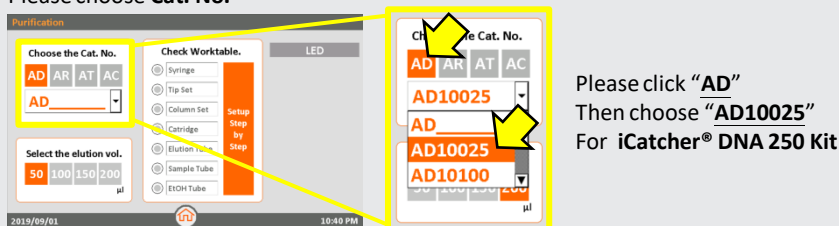
For 11 mg Proteinase K, please add 1.1 ml PK Solvent into tube and vortex thoroughly for dissolving. After dissolving into solvent, please store in 4°C for 6 month or -20°C for 1 year.

## Step by Step to start a AD10025 Purification Run

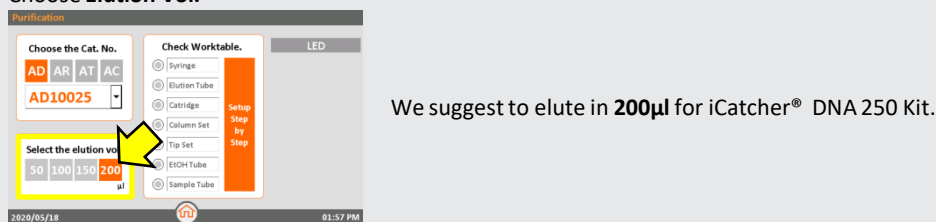
1. On the **Start** screen: Click “ENTER” button to enter the HOME screen.
2. On the **HOME** screen: Click “Purification” icon to start a purification run.



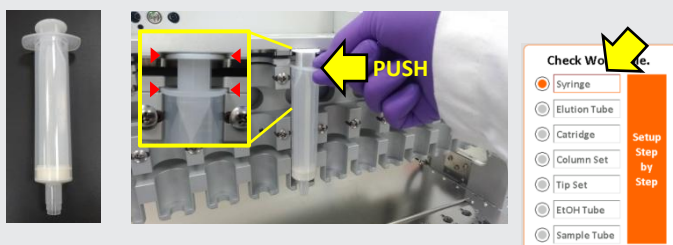
### 3. Please choose Cat. No.



### 4. Choose Elution Vol.

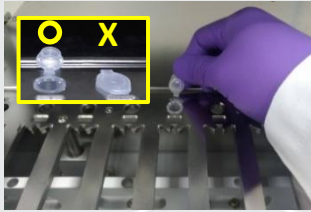


### 5. Insert the Syringe into the groove of Syringe Seat and push it to the end.



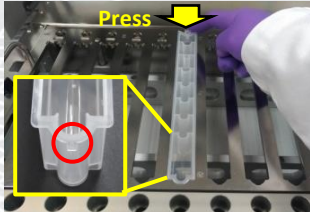
Check the **Syringe**.

6. Place **Tip Set** on Tip Set position and press into bottom. Labeling, then open the lid and place the **Elution Tube** on the Elution Tube position.



Check the **Elution Tube**.

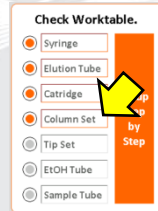
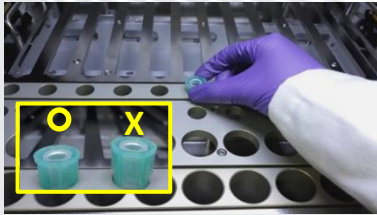
7. Insert the front protrude part of **Cartridge** into Cartridge position and press the bottom down. Then remove the foil.



Check the **Cartridge**.

**Important! Please must remove the foil before running a protocol.**

8. Insert **Column Set** into Column Set position and press into bottom.



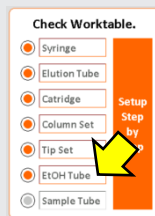
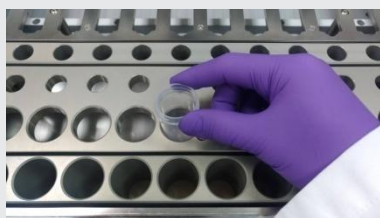
Check the **Column Set**.

9. Place **Tip Set** on Tip Set position and press into bottom.



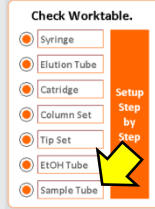
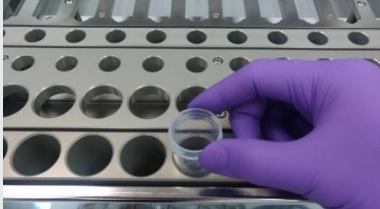
Check the **Tip Set**.

10. Add **10 ml** 100% EtOH into **EtOH Tube** and place on the EtOH Tube position.



Add **10ml** 100% EtOH for AD10025  
Check the **EtOH Tube**.

11. Prepare sample and load the **Sample Tube** into the Sample Tube position.



Check the **sample Tube**.  
Click "**Go**" to start purification.

1. Add 25  $\mu$ l Proteinase K (10 mg/ml) into the bottom of Sample Tube.
2. Transfer 250  $\mu$ l of whole blood sample into the Sample Tube.
3. Load the Sample Tube into the Sample Tube position of iCatcher (no need to mix or pipette it).

**FOR RESEARCH USE ONLY**