

## Kit Content

	36rxn	
Syringe	36	set
Elution Tube	36	pcs
AC20100 Cartridge	36	set
AC20100 Column Set	36	set
AC20100 Tip Set	36	set
EtOH Tube	36	pcs
Sample Tube	36	pcs
Buffer RCL1	12	ml
Buffer RCL2	4	ml

## Kit Storage

Upon arrival,

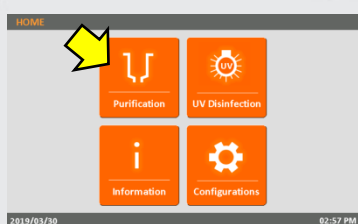
1. Please store **AC20100 Column Set** at 4°C for long term storage.
2. Buffer, solvent and consumables, please store at 15-25 °C.

## Step by Step to start a AC20100 Purification Run

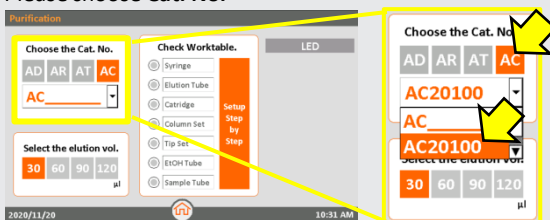
1. On the **Start** screen: Click “ENTER” button to enter the HOME screen.



2. On the **HOME** screen: Click “Purification” icon to start a purification run.

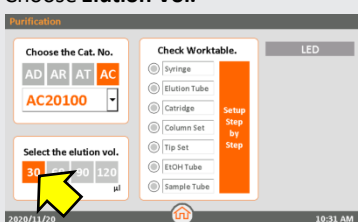


3. Please choose **Cat. No.**



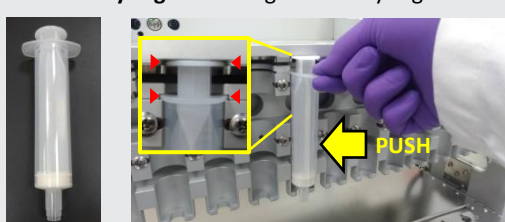
Please click “**AC**”  
Then choose “**AC20100**”  
For iCatcher® Circulating cfRNA 1000 Kit

4. Choose **Elution Vol.**



We suggest to choose **30 µl** to get higher concentration of cfRNA.

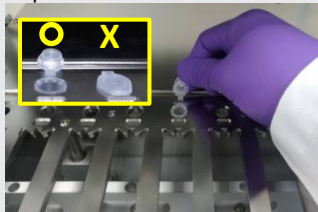
5. Insert the **Syringe** into the groove of Syringe Seat and push it to the end.



Check the **Syringe**.

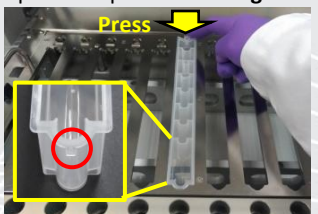
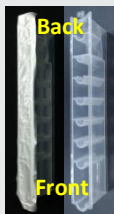
FOR RESEARCH USE ONLY

6. Open the lid and place the **Elution Tube** on the **Elution Tube** position.



Check the **Elution Tube**.

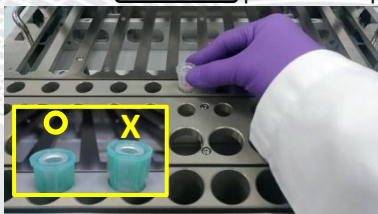
7. Insert the front protrude part of **Cartridge** into **Cartridge** position and press the bottom down. Then remove the foil.



Check the **Cartridge**.

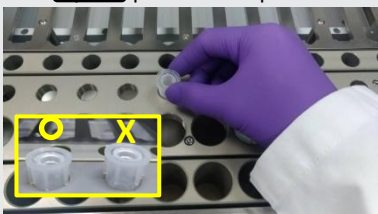
**Important! Please must remove the foil before running a protocol.**

8. Insert **Column Set** into **Column Set** position and press into bottom.



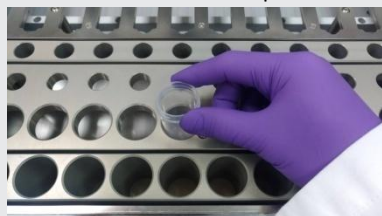
Check the **Column Set**.

9. Place **Tip Set** on **Tip Set** position and press into bottom.



Check the **Tip Set**.

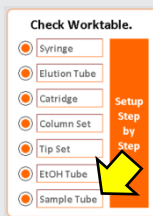
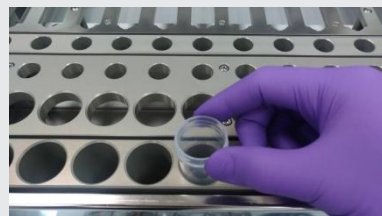
10. Add **21 ml** 100% EtOH into **EtOH Tube** and place on the **EtOH Tube** position.



Check the **EtOH Tube**.

Add **21 ml** 100% EtOH into **EtOH Tube**

11. Prepare sample as below,
- Pipette 1000  $\mu$ l serum/plasma sample into 2 ml micro-centrifuge tube and add 300  $\mu$ l Buffer RCL1. Pulse-vortexing for 10 sec, then incubate at 25°C (room temperature) for 3 min. Brief spin down.
  - Add 100  $\mu$ l Buffer RCL2, pulse-vortexing for 10 sec, brief spin down then incubate at 25°C (room temperature) for 1 min.
  - Centrifuge at 11,000 x g for 3 min.
  - Transfer 1000  $\mu$ l clear supernatant to the Sample Tube of iCatcher kit. Add 1400  $\mu$ l Isopropanol, then load the **Sample Tube** into the Sample Tube position of iCatcher (no need to mix or pipette it).



Check the **Sample Tube**.  
Click "Go" to start purification.

**FOR RESEARCH USE ONLY**