

## Kit Content

	6rxn	36rxn	
Syringe	6	36	set
Elution Tube	6	36	pcs
AC10100 Cartridge	6	36	set
AC10100 Column Set	6	36	set
AC10100 Tip Set	6	36	set
EtOH Tube	6	36	pcs
Sample Tube	6	36	pcs
Carrier RNA	12	140	µg
Proteinase K	11	11x4	mg
Buffer AE	1.5	1.5x2	ml

## Kit Storage

Upon arrival,

1. Please store **AC10100 Column Set** at **4°C** for long term storage.
2. **Carrier RNA** and **Proteinase K** should be stored at **-20°C upon arrival** for long term storage.
3. Cartridge and consumables, please store at 15-25 °C.

## Kit Preparation

### 1. Prepare 20 mg/ml Proteinase K

For 11 mg Proteinase K, please add 0.55 ml Buffer AE into tube and vortex thoroughly for dissolving. After dissolving into solvent, please store in 4°C for 6 month or -20°C for 1 year.

### 2. Prepare 0.5 µg/µl Carrier RNA

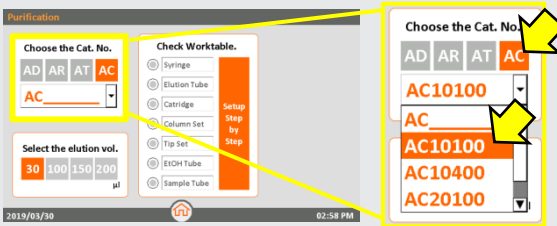
For 12 µg Carrier RNA, please add 24 µl Buffer AE into the bottom of tube and mix thoroughly for dissolving. For 140 µg Carrier RNA, please add 280 µl Buffer AE into the bottom of tube and mix thoroughly for dissolving. After dissolving, please store at -20°C. Do not freeze-thaw more than three times.

## Step by Step to start a AC10100 Purification Run

1. On the **Start** screen: Click "ENTER" button to enter the HOME screen.
2. On the **HOME** screen: Click "Purification" icon to start a purification run.



### 3. Please choose Cat. No.



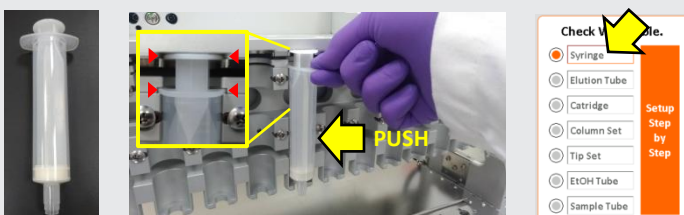
Please click "AC"  
Then choose "AC10100"  
For iCatcher® Circulating cfDNA Midi Kit

### 4. Choose Elution Vol.



We suggest to choose **30µl** to get higher concentration of cfDNA.

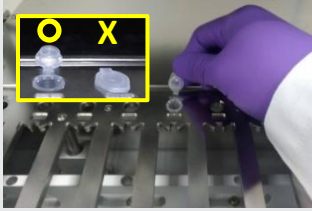
### 5. Insert the Syringe into the groove of Syringe Seat and push it to the end.



Check the **Syringe**.

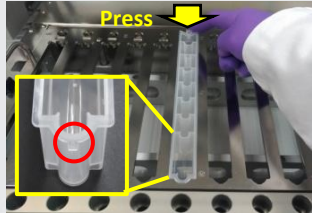
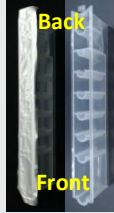
**FOR RESEARCH USE ONLY**

6. Labeling, then open the lid and place the **Elution Tube** on the Elution Tube position.



Check the **Elution Tube**.

7. Insert the front protrude part of **Cartridge** into Cartridge position and press the bottom down. Then remove the foil.



Check the **Cartridge**.

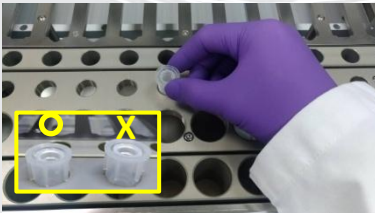
**Important! Please must remove the foil before running a protocol.**

8. Insert **Column Set** into Column Set position and press into bottom.



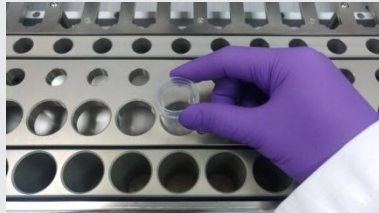
Check the **Column Set**.

9. Place **Tip Set** on Tip Set position and press into bottom.



Check the **Tip Set**.

10. Add **17 ml** 100% EtOH into **EtOH Tube** and place on the EtOH Tube position.

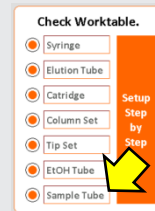
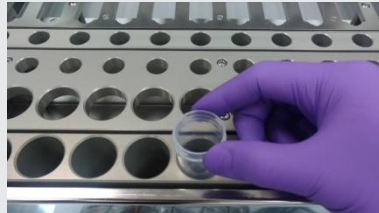


Check the **EtOH Tube**.

Add **17 ml** 100% EtOH into **EtOH Tube**

11. Prepare sample as below,

- Add 50  $\mu$ l Proteinase K (20 mg/ml) into the bottom of Sample Tube.
- Add 2.5  $\mu$ l Carrier RNA (0.5  $\mu$ g/ $\mu$ l) into the bottom of Sample Tube.
- Transfer 1 ml of serum/plasma/body fluid sample (already centrifuged with high speed) into Sample Tube.
- Load the **Sample Tube** into the Sample Tube position of iCatcher (no need to mix or pipette it).



Check the **Sample Tube**.  
Click "Go" to start purification.