

ThermoBrite® Elite

The Complete Solution for FISH Sample Preparation

The ThermoBrite® Elite automates and standardizes the FISH slide preparation process including deparaffinization, pretreatment, denaturation/hybridization and post hybridization wash. Application of probe, counterstain and cover slipping are the only manual steps.

Just load your slides and walk away. Minimal hands-on time frees up technologists for other important tasks.

The ThermoBrite® Elite hybridizes with temperature controlled to +/- 1°C and can process up to twelve slides per run with the ability to adapt to smaller batches. For higher throughput, transfer slides to a standard ThermoBrite® instrument to denature/hybridize and continue using your ThermoBrite® Elite for new runs.

Interactive easy-to-use software

The included intuitive software enables users to run preload protocols for solid tumor/FFPE, urine, or to create up to 1,000 user defined protocols. The instrument can be programmed to work with nearly any probe or protocol, allowing the selection of up to ten input reagents and three separate waste paths.



FEATURES

- Small bench top unit
- Automated fluidic system
- Hybridization temperature precision to +/- 1°C
- Workflow based software navigation
- Open system—preloaded & custom protocols

KEY BENEFITS

- Fast protocol setup and start of run
- Hands on time reduced to 3 steps from >30 (FFPE)
- Free up technologists for other tasks
- Flexible and easy-to-use
- Increases laboratory productivity

APPLICATIONS

- Histology (solid tumor/FFPE specimens)
- Cytology (urine and other fluids)
- Hematology (blood/bone marrow)
- Cytogenetics (metaphase/interphase, tissue)

User Interface I

- Load Slides
- Start Deparaffinization /Pretreatment

User Interface II

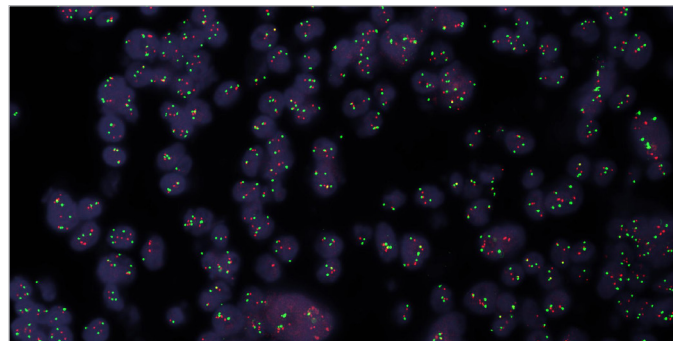
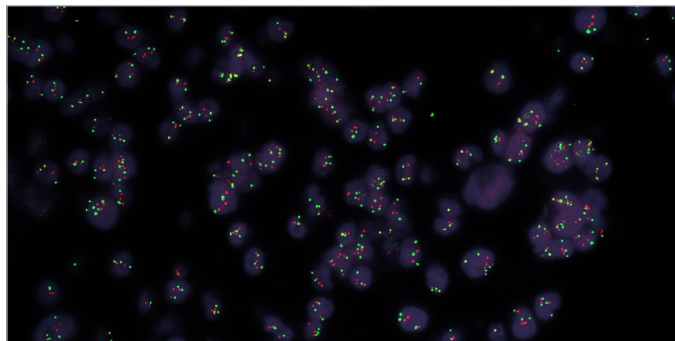
- Add Probe & Coverslip
- Start Denaturation and Hybridization

User Interface III

- Remove Coverslip
- Start Wash

User Interface IV

- Unload Slides



HER2 probe (red), chromosome 17 centromere probe (green), DAPI (blue).

SYSTEM SPECIFICATIONS:

PART NUMBER	3800-007000-001	
SLIDE-BASED APPLICATIONS	Histology Cytology Hematology Cytogenetics	
INSTRUMENT FLUIDICS	Input Fluidics Output Fluidics Compatibility	10 reagents 3 wastes Common ISH/FISH reagents
DIMENSIONS & WEIGHT	Width: 24.5" = 62.2 cm, Height: 15" = 38.1 cm, Depth:15.5" = 39.4 cm, Weight: ~60 lbs = ~27 kg	
TEMPERATURE	Control Range Operating	25° C - 95° C 15-40° C = 59-104° F, Relative humidity: max. 80% < 31° C, max. 50% at 31-40° C
USER INTERFACE AND CONTROL	PC-based GUI Continuous data logging	
SAFETY & REGULATORY	ETL, CSA, CE	
POWER REQUIREMENTS	100-240 VAC, 50/60 Hz, 10A	

LEICA BIOSYSTEMS

Leica Biosystems is a global leader in workflow solutions and automation, striving to advance cancer diagnostics to improve patients' lives. Leica Biosystems provides anatomic pathology laboratories and researchers a comprehensive product range for each step in the pathology process, from sample preparation and staining to imaging and reporting. Our easy-to-use and consistently reliable offerings help improve workflow efficiency and diagnostic confidence. The company is represented in over 100 countries and is headquartered in Nussloch, Germany.

Intuitive user interface simplifies building or modifying protocols.

Leica Biosystems brings together products, quality and support.

Offering a complete solution that helps you advance workflows, enhance diagnostic clarity and deliver what really matters – better patient care.

