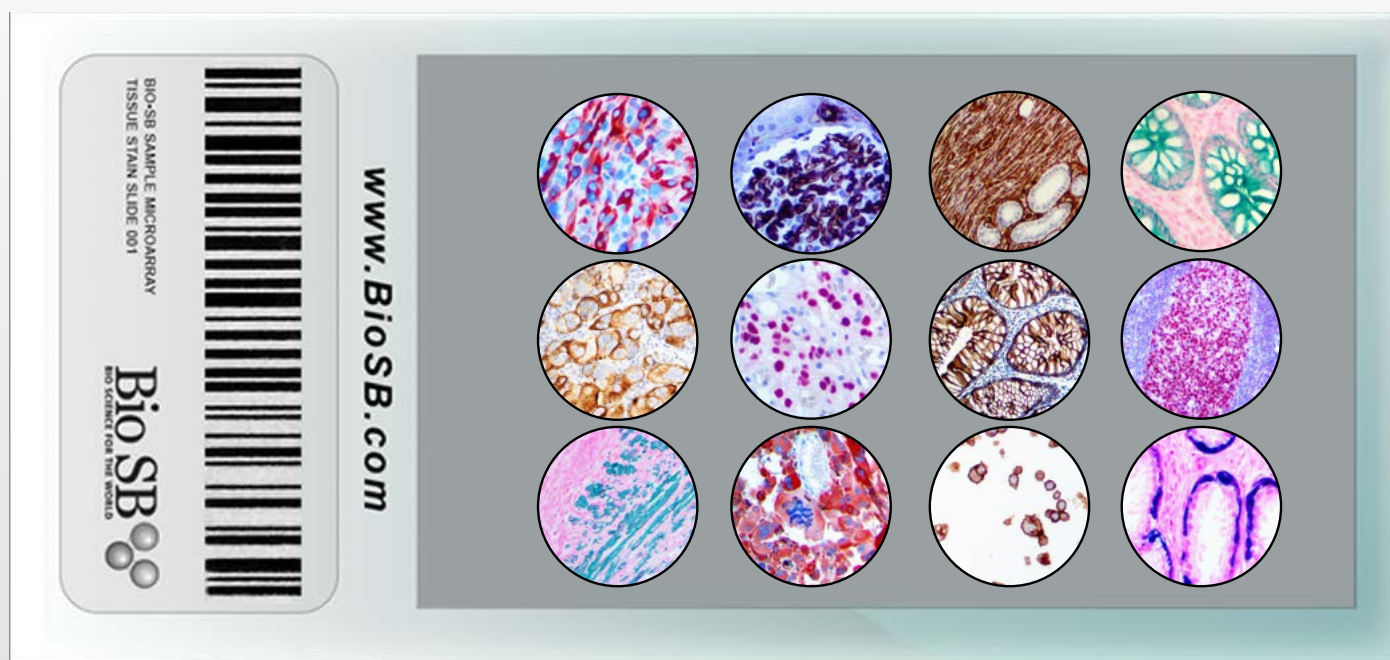


Tissue Micro Arrays & Control Slides

Tissue Micro Arrays | Infectious Disease Arrays | IHC & ISH Validated



Control Slide Introduction

As the diagnostics market continues to grow, researchers and clinicians have a greater need for a wide variety of high quality and cost effective control slides. Control slides are invaluable tools utilized by institutions when validating reagents, qualifying new products, testing protocols or performing research which requires multiple tissue types. Bio SB control slides are cost effective, high quality tissues mounted on Hydrophilic Plus slides which are validated for use in immunohistochemical (IHC) and *in situ* hybridization (ISH) applications.

Normal Human TMA (NH-TMA)

The Normal Human Tissue Micro Array, or NH-TMA, is an excellent way to test an antibody, ISH probe or other reagent on multiple tissues. Bio SB NH-TMA arrays are available in both 11 or 23-core configurations. Bio SB NH-TMA's are an excellent way for clinics and research labs to save time and money by allowing multiple tissues to be tested on one slide.

All TMA's have been validated using immunohistochemical methods and are positive for over 100 antibodies. Additionally all TMA's can be custom ordered to be cut and placed on any slide including the Bio SB Hydrophilic Plus slide.

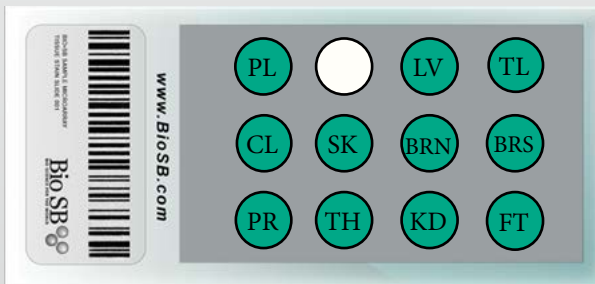
Tissue Micro Array Features

- Easy method of antibody validation.
- Cost effective diagnostic control.
- Test a large number of tissue types on one slide.
- Available in 11 or 23 core format.
- Validated for use with over 100 antibodies used in Immunohistochemistry .



Above: Depiction of Normal Human 11 Core TMA.

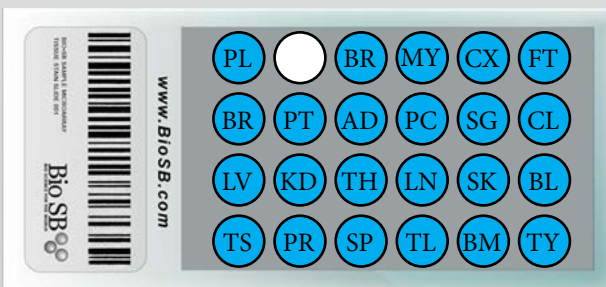
NH-TMA Map



The Maps below outline the various normal tissue types used. Each slide comes with a "blank" core for easy orientation & interpretation.

11 Core Normal Human Tissue Micro Array (NH-TMA) Key

PL - Placenta	Blank	LV - Liver	TL - Tonsil
CL - Colon	SK - Skin	BRN - Brain	BRS - Breast
PR - Prostate	TH - Thyroid	KD - Kidney	FT - Fallopian Tube

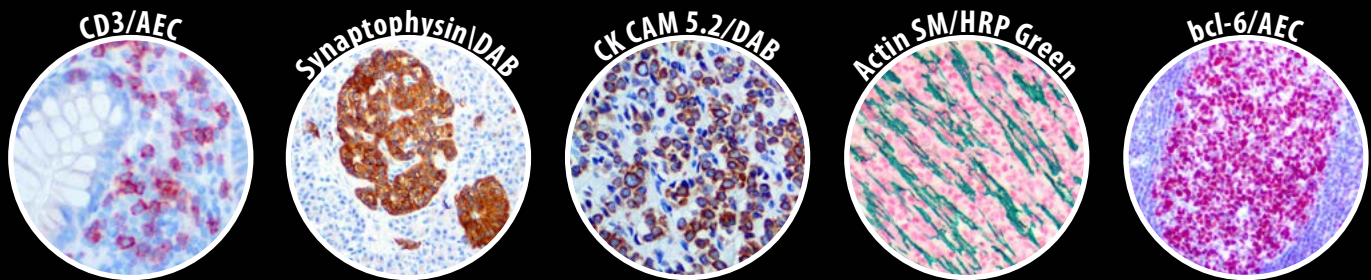


23 Core Normal Human Tissue Micro Array (NH-TMA) Key

PL - Placenta	Blank	BR - Brain	MY - Myometrium	CX - Cervix	FT - Fallopian Tube
BR - Brain	PT - Pituitary	AD - Adrenal	PC - Pancreas	SG - Salivary	CL - Colon
LV - Liver	KD - Kidney	TH - Thyroid	LN - Lung	SK - Skin	BL - Bladder
TS - Testis	PR - Prostate	SP - Spleen	TL - Tonsil	BM - Bone Marrow	TY - Thymus

Positive IHC Biomarkers for 11 & 23-Core NH-TMA								
Actin S.M.	CD10	CD4	CD7	CK 5/6	Factor XIIIa	MART-1	PAX-2	Synpatophysin
AFP	CD15	CD43	CD79a	CK 7	GCDFP-15	NeuN	PAX-5	Thyroglobulin
AMACRacemase	CD1a	CD45	CD8	CK AE1	GFAP	NSE	PAX-8	TTF-1
bcl-1	CD20	CD45RA	CD99	CK CAM 5.2	HBME-1	Neurofilament	PIN-4	Vimentin
bcl-2	CD21	CD45RO	CD117	CK Cocktail	hCG	OC-125	PLAP	WT-1
bcl-6	CD23	CD5	CD138	Desmin	Hep-Par 1	p120	PR	More biomarkers can be used with NH-TMA's. For a complete list email info@biosb.com.
Ber-EP4	CD3	CD56	CDX-2	E-Cadherin	HMB-45	p57	PSA	
CA19-9	CD30	CD56	CEA	EMA	hPL	p63	RCC	
Calponin	CD31	CD57	Chromogranin A	ER	Ki-67	Pan Keratin	S100	
Calretinin	CD34	CD68	CK 20	Factor VIII	Mammoglobin	PMSA	TAG-72	

Sample NH-TMA IHC Stains

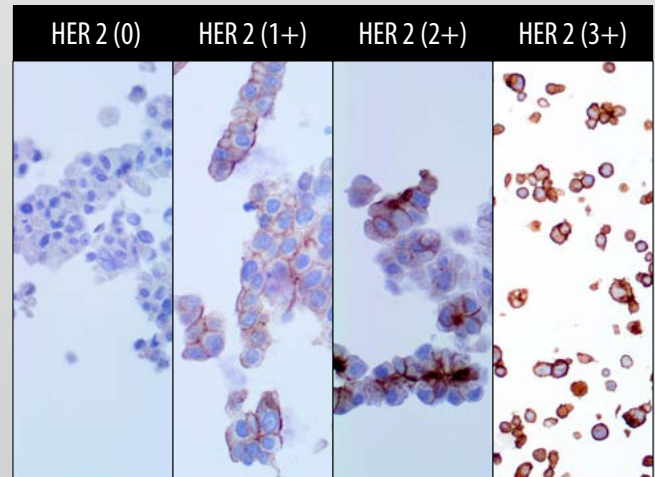


Positive Control Slides

Bio SB has over 36 types of formalin fixed paraffin embedded tissues and cell lines for your Immunohistochemical and *In situ* hybridization needs. Our large inventory of tissues ranging from Adrenal to Uterus allows us to provide unique cases that other companies cannot. All positive control slides are available in packs of five and are competitively priced. Ask us about custom TMA or positive control slides.

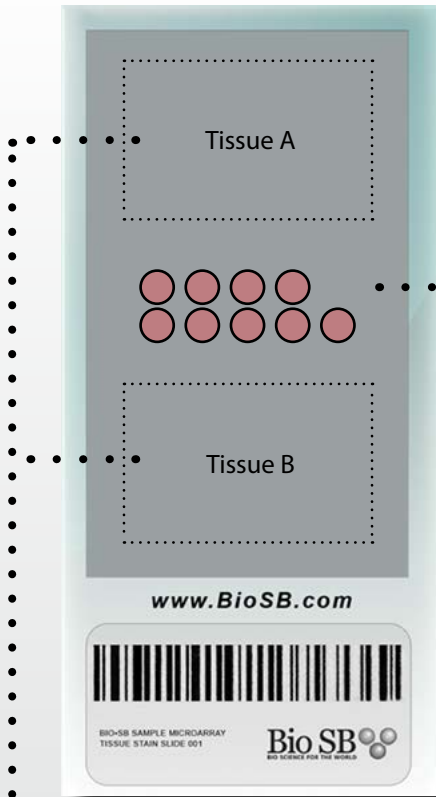
Tissue Micro Arrays	Catalog
11-Core NH-TMA	BSB 0297
23-Core NH-TMA	BSB 0298
NH Tonsil TMA	BSB 0299
Multi-Cancer TMA	BSB 0230
CD117/DOG-1 Gastrointestinal Stromal Tumor TMA	BSB 0231

Cell Line Micro Arrays	Catalog
HER-2 Cell Line Micro Array (0, 1+, 2+, 3+ signal)	BSB 0292
ER/PR Cell Line Micro Array	BSB 0293
HPV Cervical Cancer Cell Line Micro Array (SiHa, Caski, HeLa)	BSB 0294
EGFR Cell Line Micro Array	BSB 0295
ALK-1 Cell Line Micro Array	BSB 0296

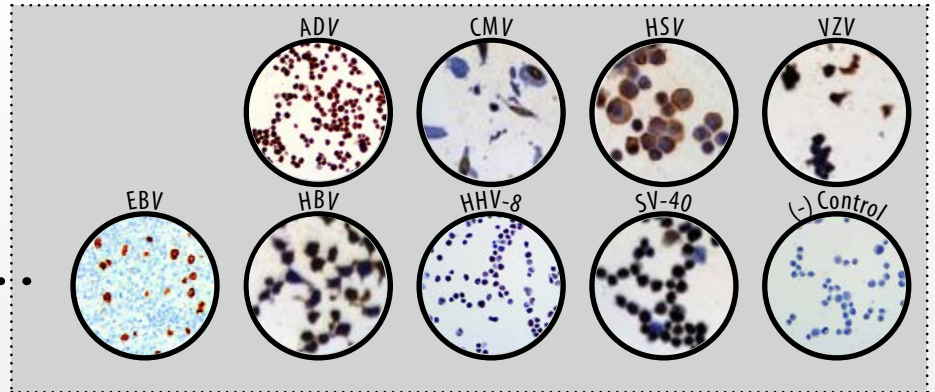


Above: HER-2 Cell Line Micro Array with various signal strengths.

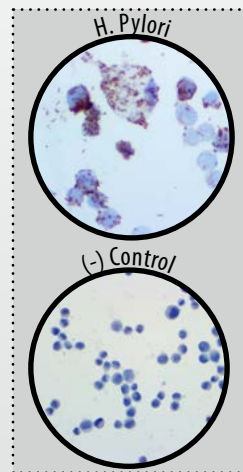
The Bio SB Infectious Disease cell line micro array, or ID-Array is a simple and cost effective way to test and validate infectious disease markers by immunohistochemical (IHC) or *in situ* hybridization (ISH). The infectious disease micro array is available in a 9-core or Individual virus configuration, and includes two areas for tissue mounting. All TMA's include negative controls to reduce interpretation error.



- Two tissue mounting areas allow for maximum flexibility and integration for users with automated or manual IHC/ISH systems.



Above: 9-Core Multi-Infectious Disease Cell Line Array (BSB 0232)



Above: 2-Core H. Pylori Cell Line Array (BSB 0241).

Description	Catalog
Multi ID-Array (9-Core)	BSB 0232
Adenovirus ID-Array (2-Core)	BSB 0233
CMV ID-Array (2-Core)	BSB 0234
HSV ID-Array (2-Core)	BSB 0235
VZV ID-Array (2-Core)	BSB 0236
EBV ID-Array (2-Core)	BSB 0237
HBV ID-Array (2-Core)	BSB 0238
HHV-8 ID-Array (2-Core)	BSB 0239
SV-40 ID-Array (2-Core)	BSB 0240
H.Pylori ID-Array (2-Core)	BSB 0241

ID-Array

- Test multiple infectious disease markers.
- Optimized for IHC & ISH Applications.
- Cost effective solution.
- Test multiple samples at once.
- Two control tissue mounting areas for Manual or Automated IHC/ISH users.



Ordering

United States

Phone: 1-800-561-1145

International

Phone: 1-805-692-2768

Global Distribution

www.biosb.com/distributors