

# Certificate of Analysis

## Sample and Test Method

600mg (2%) MCT Natural Bulk HPLC High Sensitivity

Batch Number SH260820MN LOD  $\leq 0.21$ , LOQ  $\leq 0.64$  ppm for all targets

Best before Feb 22 Date Tested 27 Aug 20

## Results

Compound	Abbreviation	Milligrams (mg) Per 30ml	Concentration %
Cannabidivarin	CBDV	0.000	0.000
Cannabidiolic Acid	CBDA	0.000	0.000
Cannabigerolic Acid	CBGA	0.000	0.000
Cannabigerol	CBG	0.000	0.000
Cannabidiol	CBD	610.574	2.035
Tetrahydrocannabivarin	THCV	0.000	0.000
Cannabinol	CBN	0.000	0.000
d9-Tetrahydrocannabinoid	d9-THC	0.000	0.000
d8-Tetrahydrocannabinoid	d8-THC	0.000	0.000
Cannabichromene	CBC	0.000	0.000
Tetrahydrocannabinolic acid	THCA	0.000	0.000
<b>Total THC</b>		0.000	0.000
<b>Total CBD</b>		610.574	2.035

### Tested by

Name: Evelin Rauscher

Position: QC Analyst

Sign & Date: *Evelin Rauscher*  
12 OCT 20

### Reviewed by

Name: Mattheus Sookoo

Position: Production Manager

Sign & Date: *M. Sookoo 12 Oct 20*

### LOVE HEMP LTD

Unit 19B, 22 Carlton Rd, South Croydon, CR2 0BS | info@love-hemp.com  
Company VAT Number: GB231783510

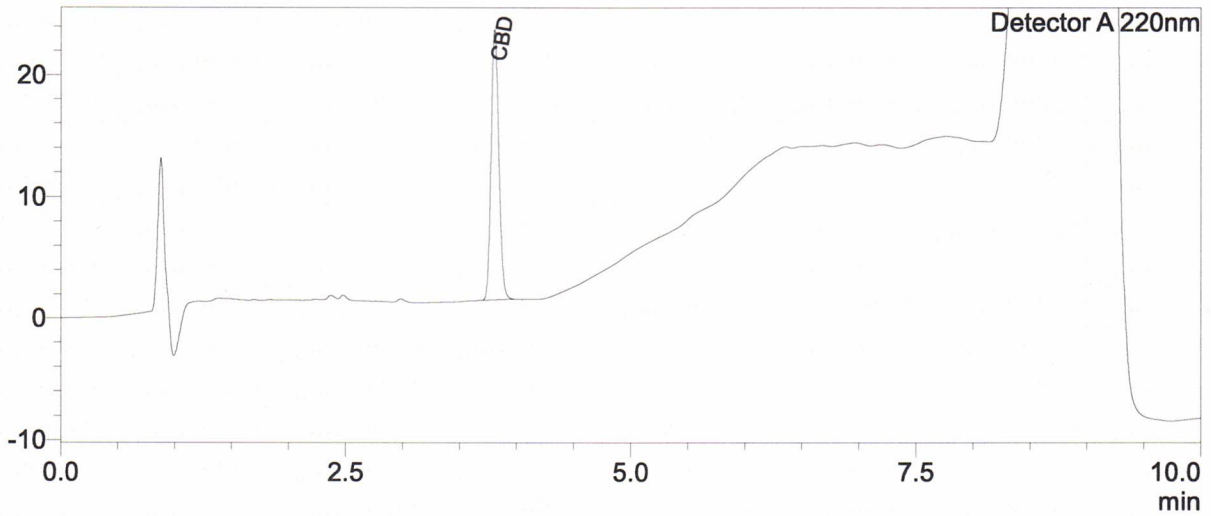


### Sample Information

Sample Name : SH260820MN  
 Sample ID : B  
 Data Filename : Love Hemp - \_SH260820MN\_B.lcd  
 Method Filename : HighSensitivity Liquid Samples.lcm  
 Batch Filename : Analysis20200827\_101854-001.lcb  
 Sample Type : Unknown  
 Level : 1  
 Dilution Factor : 4050  
 Vial # : 1-1  
 Injection Volume : 10 uL  
 Date Acquired : 27/08/2020 10:19:20

### Chromatogram

mV



### Quantitative Results

Detector A

ID#	Name	Ret. Time	Area	Conc. ppm
1	CBDV	--	--	0.00
2	CBDA	--	--	0.00
3	CBGA	--	--	0.00
4	CBG	--	--	0.00
5	CBD	3.809	104562	20352.45
6	THCV	--	--	0.00
7	CBN	--	--	0.00
8	d9-THC	--	--	0.00
9	d8-THC	--	--	0.00
10	CBC	--	--	0.00
11	THCA	--	--	0.00

#### Percentage and mg based on 10 mL bottle

Total THC	0.00	%
Total THC	0.00	mg
Total CBD	2.04	%
Total CBD	203.52	mg

**Total THC  
d9-THC and THCA combined**

**Total CBD  
CBD and CBDA combined**

*Reviewed MS 27 Aug 20*

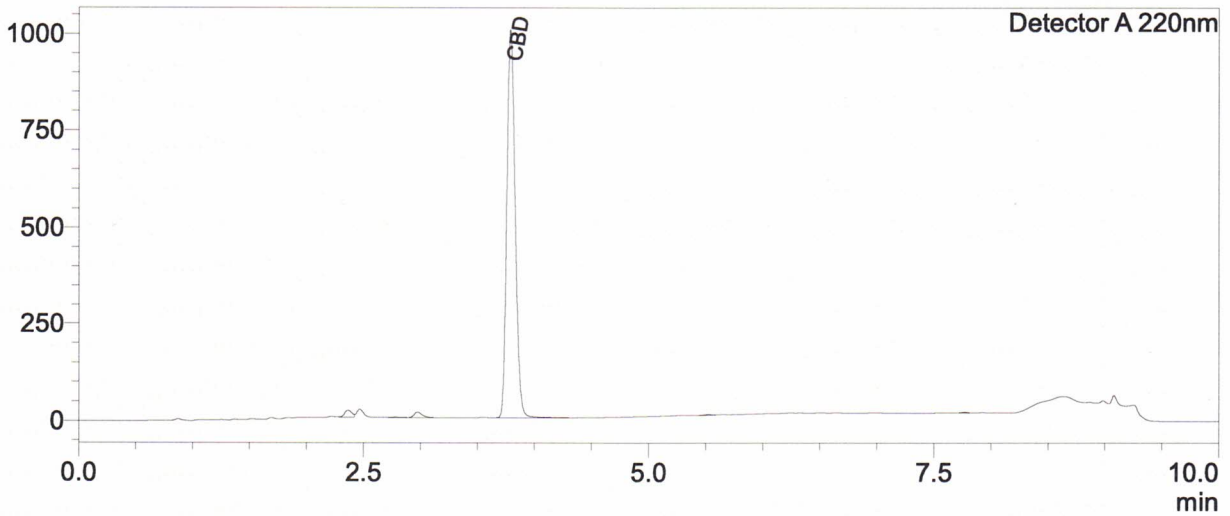


### Sample Information

Sample Name : SH260820MN  
 Sample ID : A  
 Data Filename : Love Hemp - \_SH260820MN\_A.lcd  
 Method Filename : HighSensitivity Liquid Samples.lcm  
 Batch Filename : Analysis20200827\_101854-001.lcb  
 Sample Type : Unknown  
 Level : 1  
 Dilution Factor : 81  
 Vial # : 1-2  
 Injection Volume : 10 uL  
 Date Acquired : 27/08/2020 10:29:40

### Chromatogram

mV



### Quantitative Results

Detector A

ID#	Name	Ret. Time	Area	Conc. ppm
1	CBDV	--	--	0.00
2	CBDA	--	--	0.00
3	CBGA	--	--	0.00
4	CBG	--	--	0.00
5	CBD	3.790	5096943	19841.89
6	THCV	--	--	0.00
7	CBN	--	--	0.00
8	d9-THC	--	--	0.00
9	d8-THC	--	--	0.00
10	CBC	--	--	0.00
11	THCA	--	--	0.00

#### Percentage and mg based on 10 mL bottle

Total THC	0.00	%
Total THC	0.00	mg
Total CBD	1.98	%
Total CBD	198.42	mg

**Total THC  
d9-THC and THCA combined**

**Total CBD  
CBD and CBDA combined**

*Reviewed Ms 27 Aug 20*