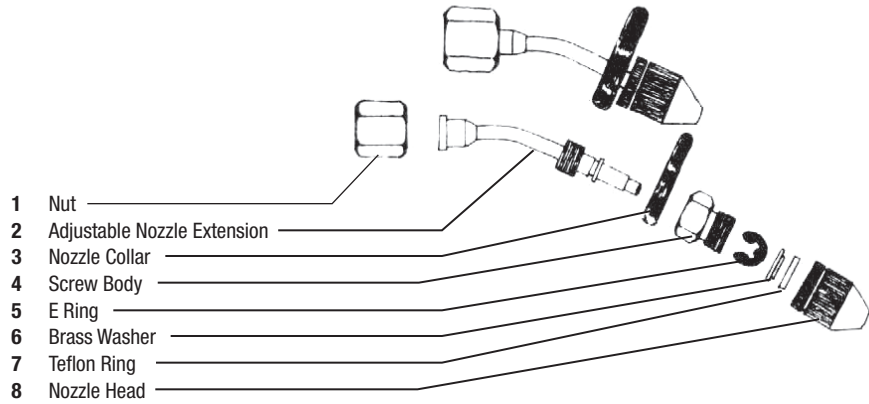


Adjustable Nozzle Kit



Spot Removal Tool Owner's Manual



This tough, dependable and durable cleaning gun is designed to handle the strongest of solvents and is equipped with an adjustable nozzle. The metal handle reduces risk of breaking if dropped. Factory authorized replacement parts are available.

- Operates on 110V/60 cycle AC.

CAUTION The gun builds up considerable pressure. Never point the gun at yourself or other persons, as this may cause injury.

The Goof Gun is preset at the factory and adjustments are generally not required.

Remove the container, fill with fluid (about 2/3 full) and replace. Plug into 110V 60 Hz outlet. Depress switch for 15-20 seconds to prime pump. Spray fluid onto scrap fabric to remove oil film from internal pump parts. Spray gun is now ready for use.



LAWSON
SCREEN & DIGITAL PRODUCTS, INC.

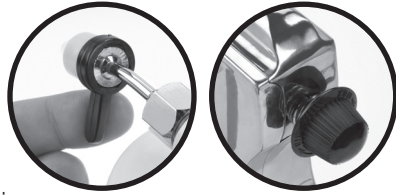
5110 Penrose St. • St. Louis, Mo 63115

314-382-9300 • 800-325-8317

Email: info@lawsonsp.com • www.lawsonsp.com

Operating Instructions

Adjustable Nozzle controls the discharge pressure of the cleaning fluid. This is adjusted by simply rotating the nozzle collar on the front of the gun.



Volume Control Knob at the rear of gun controls the volume of fluid dispensed. For cleaning, turn button as far left as possible; then back to right 1/2 to one revolution. Once adjustments are made to satisfactory pressure and volume setting it is not generally necessary to change them.

Troubleshooting Minor Mechanical Problems

1. Fluid Leakage It is necessary that all parts, particularly the nozzle head, be tight to prevent fluid working its way through the screw threads. Cleaning should be done at an angle no greater than 45° to prevent leakage from the air hole at the top of the gun. Leakage will also occur at the screw threads of the container cup if it is tilted forward for an extended period of time.

2. Lack of Pressure The primary cause of lack of pressure occurs when the suction tube, set screw, and nozzle head are not tight and the unit is sucking air. Blockage in the pump unit or nozzle and weak/damaged springs in the pump assembly are also a cause of low pressure. A lack of pressure will also occur when the prime is lost due to excessive tilting of the gun.

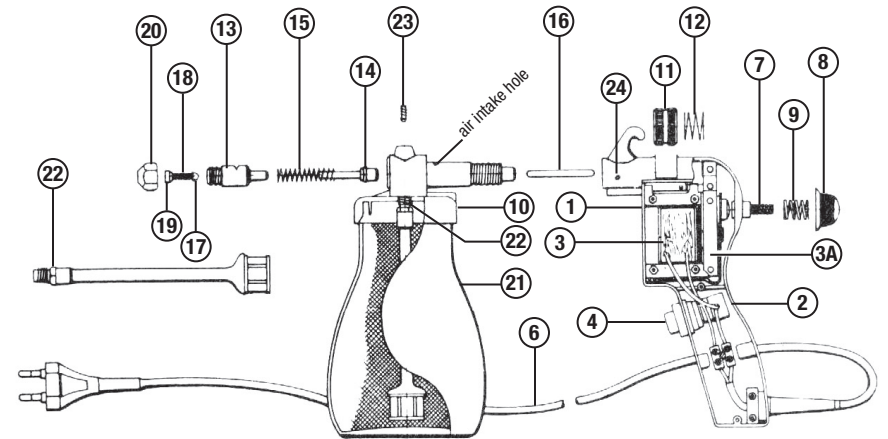
3. Operation without Fluid It is highly recommended that this unit not be operated empty since undue wear and strain is caused on all working parts. Continued use of an empty pump will cause breakage of parts and needless repairs.

4. Lubrication The gun should not be over-lubricated. One or two drops of light machine oil used daily is sufficient to keep the pump unit in working condition. For storage or discontinued use, it is recommended that a light machine oil be pumped through the gun in the same manner as cleaning fluids for a period of 2 to 3 seconds. For start-up, cleaning fluid should run through the unit prior to operation so that any oily films are pumped through the unit and flushed out.

Repair Parts and Major Gun Repairs

Normally, any repairs which are needed are minor in nature and the gun can be examined for apparent minor malfunctions. This inspection will probably involve disassembly of the pump unit and perhaps removal of the housing cover for examination. In practically all cases, these minor repairs can be made quickly without significant loss of time from operation. Should there be damaged parts which must be replaced these parts should be ordered from the seller of the gun.

Parts List



1 Housing	9 Control Knob Brake Spring	17 Delivery Valve
2 Housing Cover	10 Front Body	18 Delivery Valve Spring
3 Drive Unit	11 Adjusting Roller	19 Swirl head
3A Vibrating Armature	12 Adjusting Roller Spring	20 Nozzle Head
4 Switch	13 Pump Cylinder	21 Container
6 Cable with Plug	14 Piston	22 Suction Tube with Strainer
7 Buffer Part	15 Piston Spring	23 Threaded Stud
8 Control Knob	16 Intermediate Push Rod	24 Set Screw

Disassembly and Repair

1. Remove threaded stud (23).
2. Grasp nozzle head (20) with pliers and with a twisting motion pull pump unit from front body (10).
3. To install a new pump, the pump must first be assembled:
 - a) Insert valve assembly (17, 18, 19) into pump cylinder.
 - b) Screw nozzle head (20) onto pump cylinder (13) finger tight.
 - c) Assemble piston (14) and piston spring (15) into the pump cylinder (13).
 - d) Loosen suction tube (22) at lower side of front body (10).
 - e) Insert assembled pump cylinder unit into front body (10) with the small hole in the pump cylinder (13) down (the notch for the stud (23) will be up).
 - f) When the notch for the threaded stud is visible through the threaded hole (and properly aligned) screw the thread stud down and tighten with a screw driver. Verify the alignment of the small hole (on the lower side) with the suction tube (22).
 - g) Tighten the nozzle head with a wrench.
 - h) Replace and tighten suction tube (22).