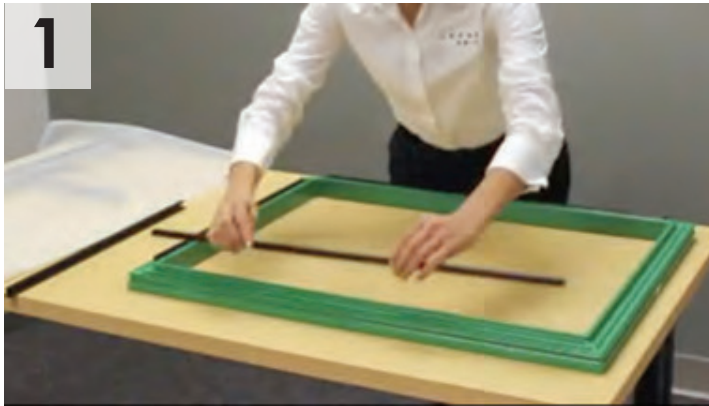


# Lawson's Panel Frame & Panel Mesh Technology... Never before has screen-making been this easy



1

Place locking bars on all four sides.



2

Simply snap the panel locking strip into the locking bar channel.



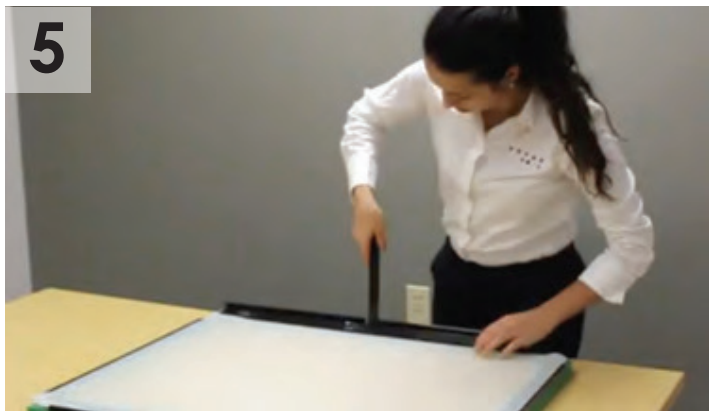
3

Center panel mesh on all four sides.



4

Use the tension tool to stretch and lock in place.



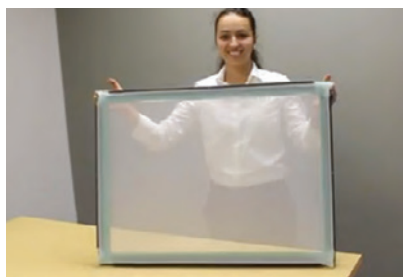
5

Stretch and lock each side in place. You'll hear a nice "snap" when the locking bar is in its proper position.



6

The entire process will take less than 1 minute. Your frame will always remain square and flat.



**The Lawson Panel Frame** has made screen stretching fun again. Simply snap the locking strip into the frame and tension to completion in less than 1 minute! Minimal operator training required.

#### **Remove & Reuse**

The Panel Mesh can be removed, with the image in place, stored, and then re-registered and used again. Save re-burn time for simple repeat jobs.

#### **Re-Stretch Yourself**

No need to ship frames back for glue removal and re-stretching - do it yourself and save the time and shipping cost.