

# SCALPA

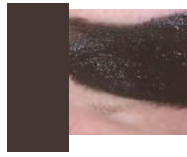
COLOR GUIDE

*Brows*



## PLATINUM

This smoky brown pigment results in a beautiful brown grey tone after healing. Platinum is perfect for clients who have silvery toned hair who desire a cooler result. This pigment will keep you looking platinum and dazzling.



## 24 KARAT

A well balanced honey-blonde. This pigment is the lightest in the SCALPA color collection. We recommend adding a drop of another, darker pigment to get more visible tint. It is suitable for blonde and light skin tones.



## LOUIE 11

This is a light brown pigment with a heavy olive tone base- a cold color. Use as a corrector/neutralizer. This pigment is suitable for evolving light brown hair colors to a gentle and natural looking honey brown.



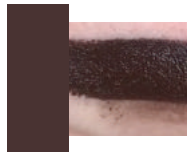
## LOUIE 12

This red-based pigment results in a warm light-medium brown results. It is a perfect mid-tone color to deliver the lasting lush richness of a natural look.



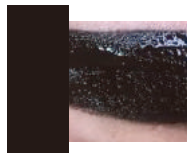
## LOUIE 13

A tone darker than Louie 12, Louie 13 is a rich brown pigment also warm and red-based. Excellent for clients looking to add a vibrancy to their dark brown hair.



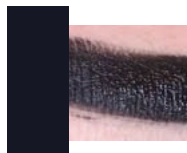
## BLACK DIAMOND

This is an olive-based dark brown pigment. Use when the client desires a dark result without red shades. We recommend adding a drop of Brown Velvet to ensure it does not heal gray.



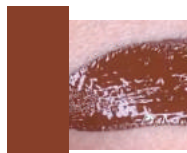
## AFRICAN KING

The darkest black brown color in the SCALPA Brow Collection. Use on clients with dark skin tones. Be sure to balance the cold blue shades in this pigment with a drop of Brown Velvet to warm it.



## BROWN VELVET

This warm, orange/red-based pigment results in a medium-brown. Use as an addition to other colors. Use of this pigment as a clean color may result in an extra brown red (red hair) warming effect.



### Ingredients:

Glycerin, propylene glycol, alcohol, water, witch hazel, antioxidant formula, non-toxic pigment blend

# SCALPA COLOR COMBINATION GUIDE

SKIN COLOR	HAIR COLOR	PLATINUM	24 KARAT	LOUIE 11	LOUIE 12	LOUIE 13	BLACK D	AFRICAN KING	BROWN V
LIGHT	BLONDE		👉👉👉	👉					
LIGHT	BRUNETTE		👉👉	👉	👉				
LIGHT	DARK			👉👉👉					
LIGHT	SILVER	👉		👉👉👉					
MED	BLONDE			👉👉👉					
MED	BRUNETTE				👉👉	👉👉			
MED	DARK					👉👉👉			
MED	SILVER	👉👉		👉👉					
TAN	BLONDE					👉👉👉			
TAN	BRUNETTE					👉	👉👉		👉
TAN	DARK				👉		👉👉👉		
TAN	SILVER	👉👉👉							
DARK	BLONDE						👉👉👉		👉
DARK	BRUNETTE					👉		👉👉	👉
DARK	DARK					👉		👉👉👉	
DARK	SILVER	👉👉				👉		👉	