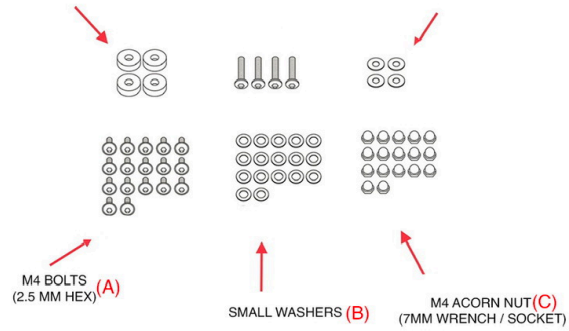


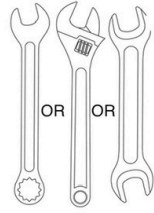
1/4" RUBBER SPACERS

M5 BOLTS

LARGE WASHERS

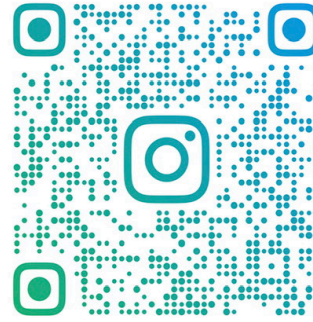


PARTS



7 MM WRENCH 2.5MM HEX KEY 3 MM HEX KEY

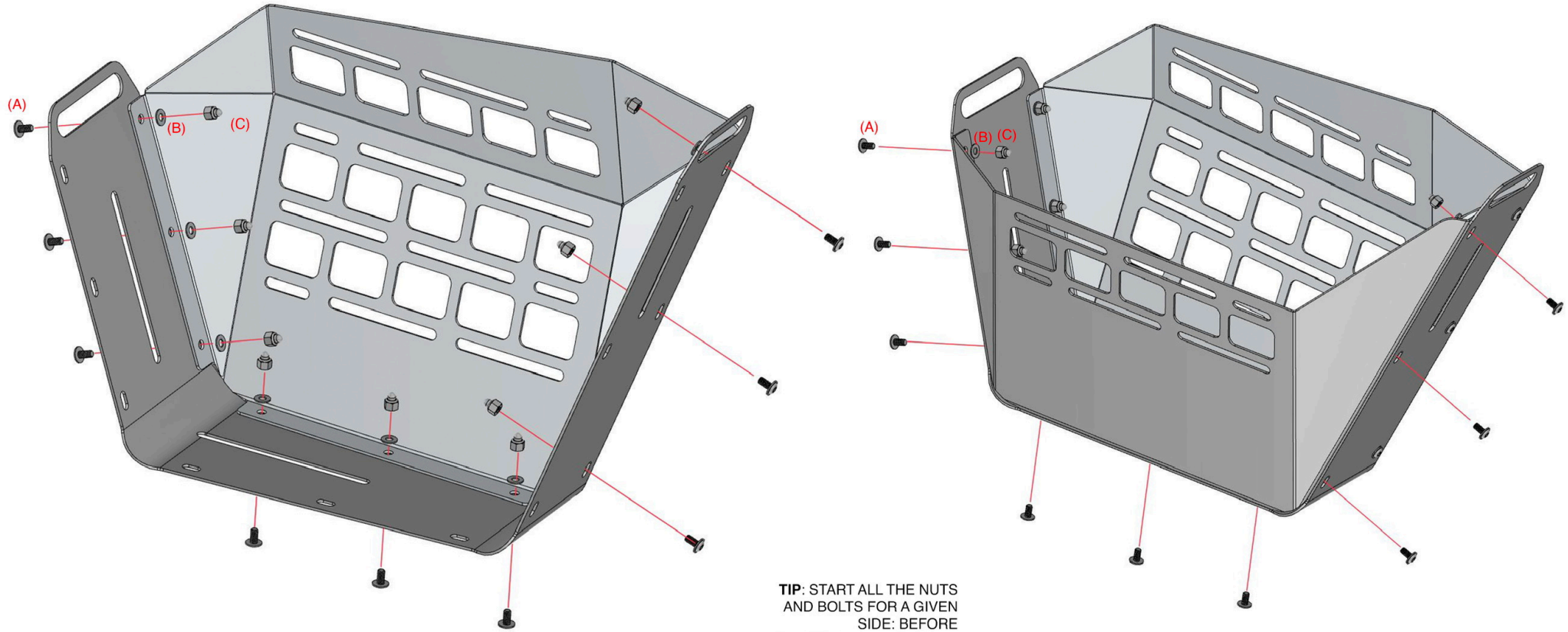
TOOLS REQUIRED



VIDEO REFERENCE

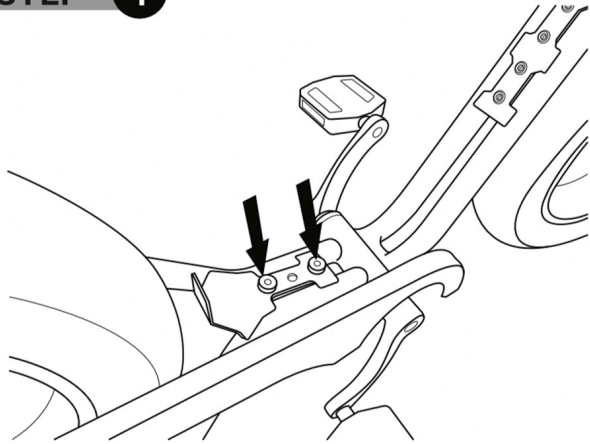
**1** OPEN THE PARTS BAG AND IDENTIFY / GROUP THE HARDWARE. SEE DIAGRAM FOR PROPER INSTALLATION. SOME EXTRA PARTS MAY BE INCLUDED

**2** ASSEMBLE THE BASKET AS SHOWN ON THE DIAGRAM. IT HELPS TO ALIGN THE TOP CORNERS OF THE BASKET THEN WORK YOUR WAY DOWN FASTENING THE SCREWS, BOLTS, AND WASHERS.



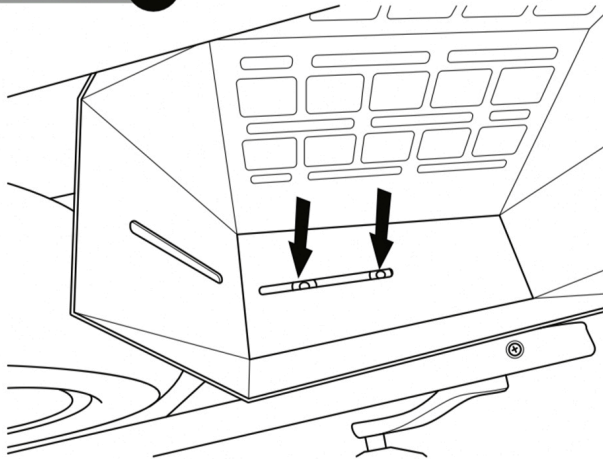
**TIP:** START ALL THE NUTS AND BOLTS FOR A GIVEN SIDE: BEFORE TIGHTENING ALL THE WAY

**STEP 1**



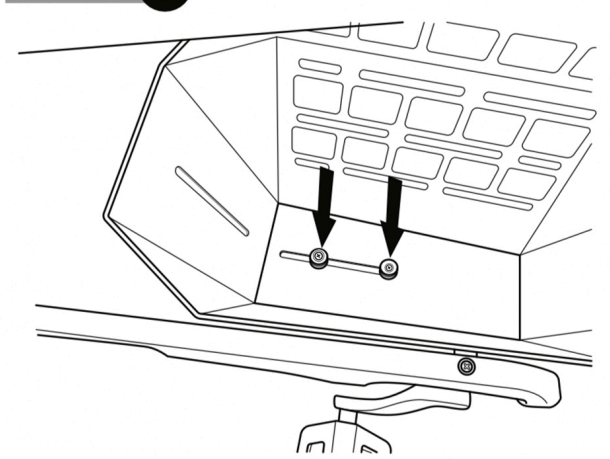
START BY PLACING 2 RUBBER SPACERS ON THE REAR MOUNTING POINTS OF THE BIKE.

**STEP 2**



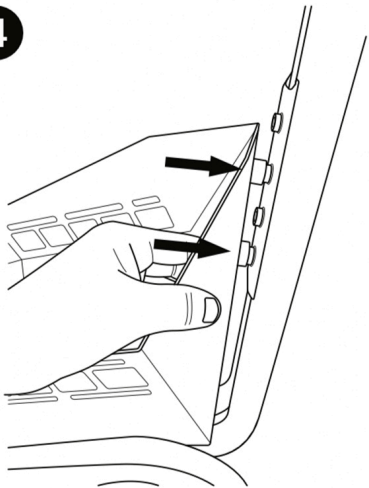
CAREFULLY PLACE THE BASKET ON TOP, LINING UP THE CORRESPONDING MOUNTING POINTS AND RUBBER SPACERS.

**STEP 3**



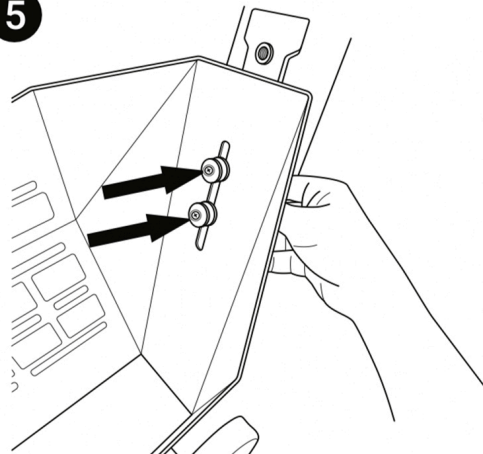
INSERT 2 M5 BOLTS AND 2 LARGE WASHERS, THREAD IN, DO NOT TIGHTEN ALL THE WAY.

**STEP 4**



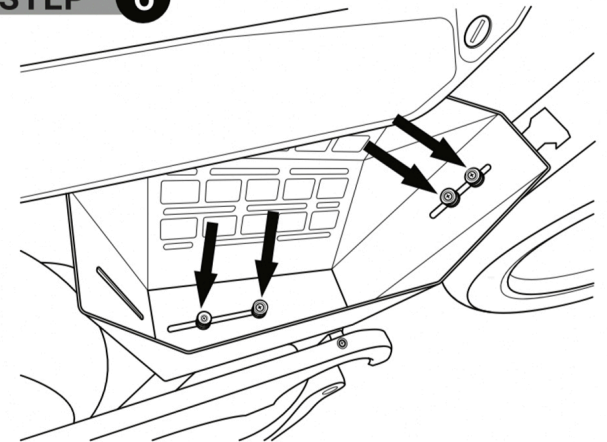
PLACE 2 RUBBER SPACERS BETWEEN THE FRONT OF THE BASKET AND THE BIKE FRAME.

**STEP 5**



WHILE HOLDING THE RUBBER SPACERS IN PLACE, INSERT 2 M5 BOLTS AND 2 LARGE WASHERS SECURING THE FRONT BASKET ON TO THE BIKE FRAME.

**STEP 6**



LASTLY, TIGHTEN ALL BOLTS