

AN UNDERSEA ALPHABET



ANEMONE



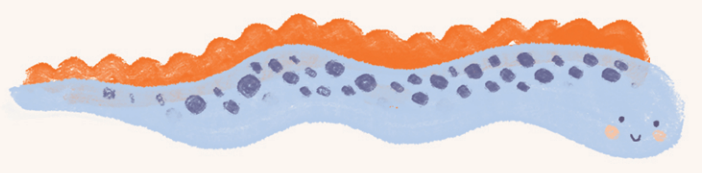
BEACH



CRAB



DOLPHIN



EEL



FISHERMAN



GIANT SQUID



HARBOR



ISLAND



JELLYFISH



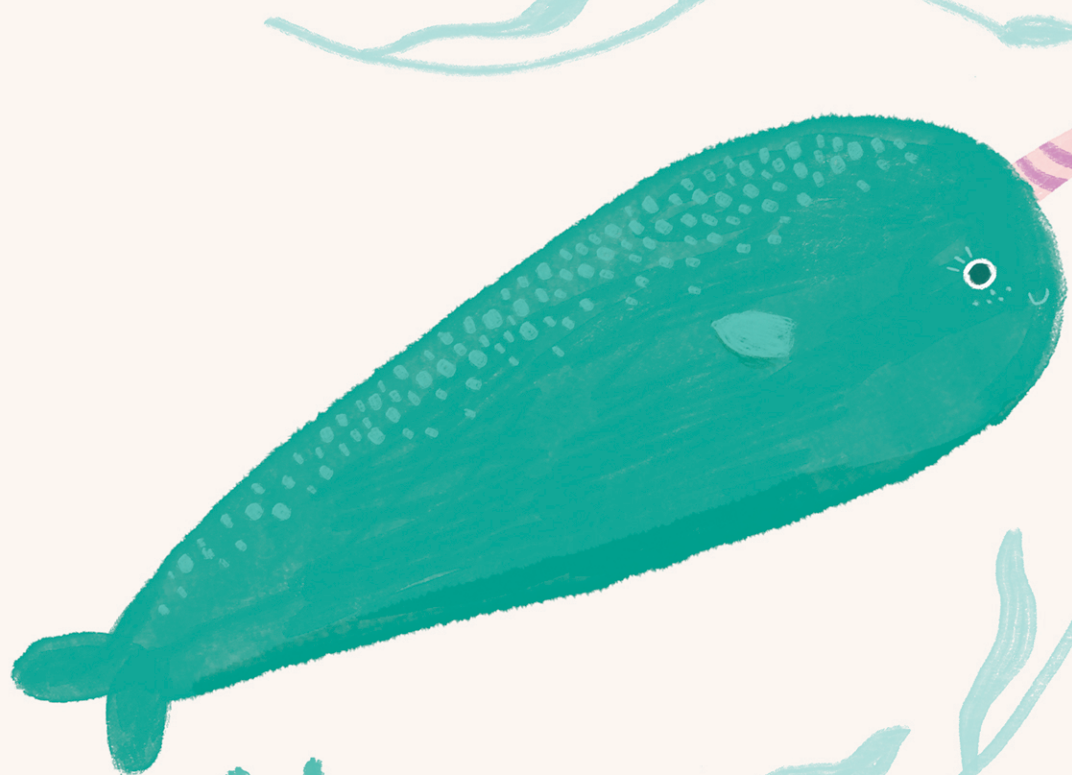
KELP



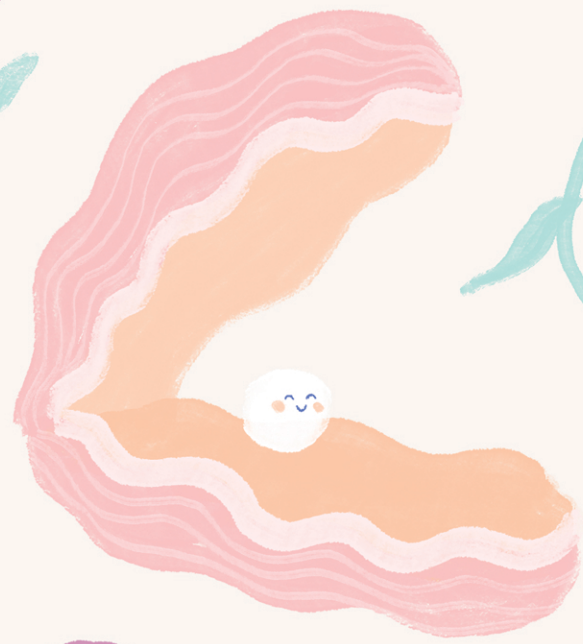
LIGHTHOUSE



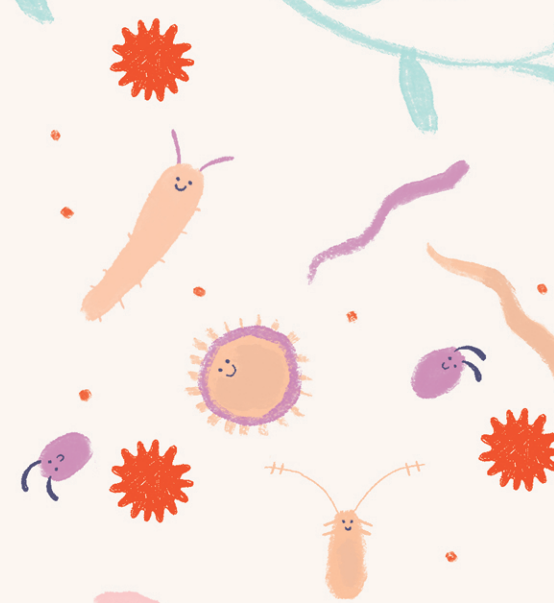
MERMAIDS



NARWHAL



OYSTER



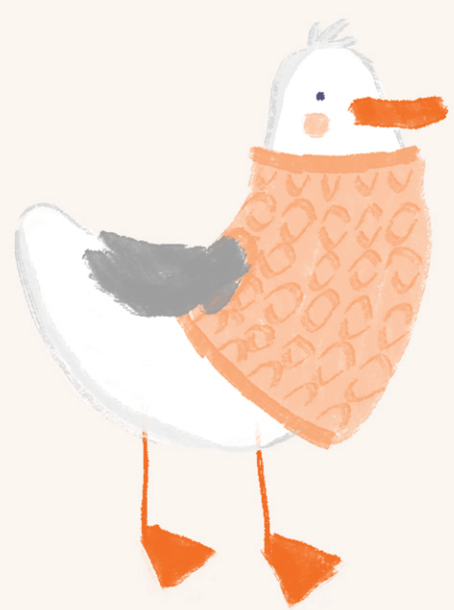
PLANKTON



QUEEN CONCH



REEF



SEAGULL



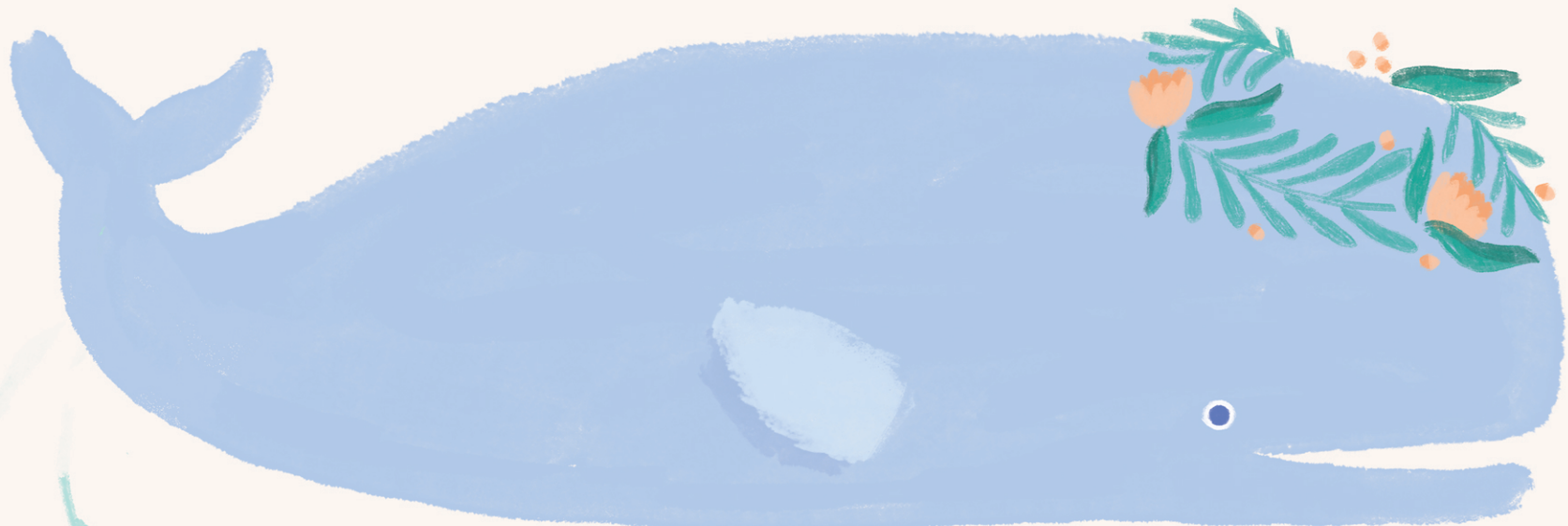
TURTLE



URCHIN



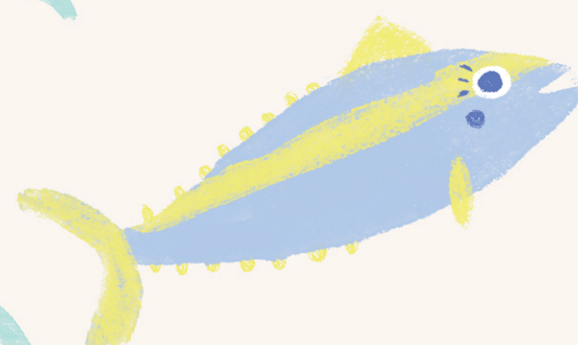
VOLCANO



WHALE



XRAY FISH



YELLOWFIN TUNA



ZEBRA FISH