



# AE DR10 SWEEPER

ASSEMBLY INSTRUCTIONS  
FOR AE DR10RTR OR DR10 KIT



To Our Valued Customer:

Thank you for your purchase from Five Star Hobbies. We are a small business with a goal to make high quality items that our customer can enjoy. We also want to thank all of you, the customer, for believing in us and spending your hard earned money on our products.

We are constantly looking for ways to improve our products and customer support. ALL constructive criticism is always welcome. Also, if you have an issues with your product or maybe you just have a question, there are many places to go get help. If you are on Facebook, you can check out our group page. It is called Five Star Hobbies Breakout and Street Sweeper Group. We also have our own Facebook page called Five Star Hobbies. You can message us through Facebook, but we do not monitor Facebook messages as closely as we would like because of our busy schedule. If you need Immediate assistance or have questions, pleas call the store at 531-867-3301. We have helpful staff at the store that will be happy to help. If they do not have the answer, they will find it for you and call you back. Here is our contact information:

Five Star Hobbies  
10935 Emmet St.  
Omaha, NE 68164

Phone: 531-867-3301  
Email: [sales@fivestarthobbies.com](mailto:sales@fivestarthobbies.com)  
[www.fivestarthobbies.com](http://www.fivestarthobbies.com)

Sincerely,  
*Jared Baker*  
Jared Baker  
Owner



To complete your DR10 Sweeper build in "SLIDER" form, you will need the following items:

Part Number	Description Of Product	Quantity
KIT61005	DR10 STREET SWEEPER KIT	1
70027	DR10 Team Kit	1

Popular items to change on your "SLIDER" are these items:

Part Number	Description Of Product	Quantity
61241	DR10 Front Shock tower	1
61242	DR10 SS Rear Shock Tower Kit	1

To complete your DR10 Sweeper build, you will need the following items:

Description Of product	Quantity
Front Wheels	2
Front Tires	2
Rear wheels	2
Rear Tires	2
Servo	1
Transmitter	1
Receiver	1
Electronic Speed Controller	1
Motor	1
Pinion Gear	1
Spur Gear	1
Body and Paint	1
Front Body Posts	2
Rear Body Posts	2
Shock Oil Of Choice	1

We also have many optional parts available at our website. [www.fivestarthobbies.com](http://www.fivestarthobbies.com) Here are some links:

[Five Star hobbies](#)  
[BREAKOUT OPTIONAL UPGRADES](#)

Bag 1		
Part Number	Description	Quantity
61003	Front Bumper - 2.5mm	1
61004	Front Mid Bumper - 2.5mm	1
61024	Printed Skid Plate	1
3x10mm FH	Chassis to Mid Bumper	2
3x10mm BH	Mid Bumper to Front Bumper	4
M3 Lock Nuts	Mid Bumper to Front Bumper	6

**Attach the front bumper to the mid bumper and skid plate using (4) 3x10 BH screws and (4) Lock nuts. At this time you may attach the bumper to the chassis with the remaining (2) 3x10mm FH and lock nuts.**



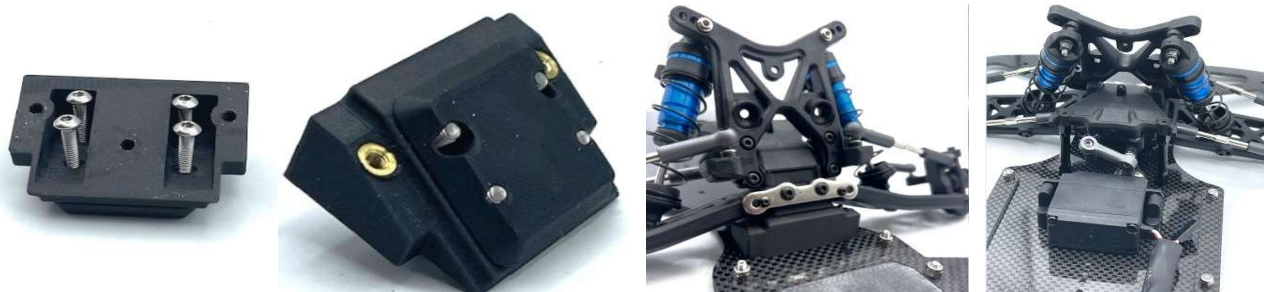
Bag 2		
Part Number	Description	Quantity
61207	DR10 Printed Kickup	1
61213	Printed Bulkhead Spacer	1
35mm Standoff	Chassis to DR10 Top Plate	2
3x10mm BH	Top Plate to Standoff	2
3x8mm FH	Servo Mount	2
3x10mm FH	Chassis to Kickup and Chassis to Standoff	3
3x16mm FH	Outside kickup block mounting	2
3x18mm BH	Kickup to AE Bulkhead	4

**Line the kickup, bulkhead spacer, and bulkhead up and insert (4) 3x18mm BH screws into the bottom of the kickup.**

**Once tightened, line up the kickup to the chassis plate and insert (1) 3x10mm FH and (2) 3x16mm FH into the kickup.**

**Install (2) 35mm standoffs into the AE Top Plate with (2) 3x10mm BH on top and (2) 3x10mm FH under the chassis plate.**

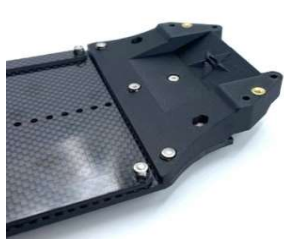
**Install your servo mounts using the included (2) 3x8mm FH screws.**



Bag 3		
Part Number	Description	Quantity
61206	V2 Chassis Side Rail	2
3x10mm FH	Chassis to Rail	8
M3 Lock Nut	Chassis to Rail	8
Attach the side rails to the chassis plate with (4) 3x10 FH on each side of the car.		

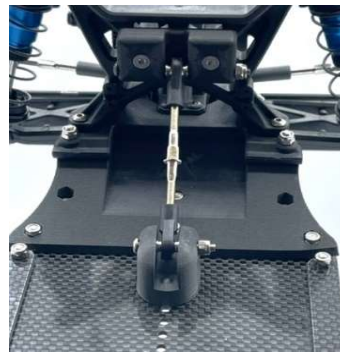


Bag 4		
Part Number	Description	Quantity
61214	DR10 Rear Riser Plate	1
3x10mm BH	Rear Shock Tower	2
3x10mm FH	Chassis to Rear Riser	6
3x30mm FH	Back Half to Camber plate	2
3x35mm FH	Back Half to Shock Tower	2
M3 Lock Nut		10
Line the rear riser plate up with the chassis and insert (6) 3x10mm FH screws and (6) M3 lock nuts. Slide the rear end of the DR10 onto the 61214 rear riser plate and insert (2) 3x35mm FH into the rear most two holes. Secure them with locknuts. Use 3x30mm FH for the front holes mating the rear riser plate to the DR10 back half. Finally use the (2) 3x10mm BH on the forward facing shock tower holes.		



Bag 5		
Part Number	Description	Quantity
61228	Waterfall Chassis Mount	1
61229	Waterfall Tower Mount	1
61230	Waterfall Turnbuckle	1
3x10mm FH	Chassis to Lower Waterfall Brace	3
3x25mm FH	Upper Waterfall Brace to Shock Tower	2
3x25mm BH	Lower Waterfall Brace to Turnbuckle	1
3x45mm BH	Upper Waterfall Brace to Turnbuckle	1
M3 Lock Nuts		2

**INSTALL THE UPPER WATERFALL BRACE MOUNT ONTO THE REAR SHOCK TOWER WITH (2) 3X25MM FH SCREWS. THEN INSTALL THE LOWER WATERFALL BRACE MOUNT ONTO THE CHASSIS USING (3) 3X10MM FH IN THE THREE NEAREST HOLES TO THE BACK HALF PLATE. FINALLY INSTALL THE TURNBUCKLE TO LINK THE UPPER AND LOWER WATERFALL MOUNTS.**



#### DR10 Sweeper Pick List

<b><u>Part #</u></b>	<b><u>Description</u></b>	<b><u>Quantity</u></b>
61003	Front Bumper	1
61004	Mid Bumper	1
61024	Skid Plate	1
61205	DR10 SS Chassis Plate	1
61206	DR10 SS Chassis Side Rail	2
61207	DR10 SS Kickup	1
61213	DR10 SS Kickup Spacer	1
61214	DR10 SS Rear Riser	1
61228	DR10 SS Waterfall Chassis Mount	1
61229	DR10 SS Waterfall Shock Tower Mount	1
61230	DR10 SS Waterfall Turnbuckle	1

#### **Hardware**

3x10mm BH	8
3x18mm BH	4
3x25mm BH	1
3x45mm BH	1
3x8mm FH	2
3x10mm FH	22
3x16mm FH	2
3x25mm FH	2
3x30mm FH	2
3x35mm FH	2