

Safecastle LLC  
P.O. Box 623  
Prior Lake, MN 55372

For Free Brochures, Call Toll-Free:  
1-877-673-2394

[www.safecastle.com](http://www.safecastle.com)



**Custom Steel Plate  
Storm and Fallout Shelters**

- Engineered to exceed FEMA guidelines
- Built to last for decades
- Lifetime Warranty on workmanship & structural integrity

Brought to you by:

**SAFECASTLE LLC**

P.O. Box 623  
Prior Lake, MN 55372

Toll Free Phone: 1-877-673-2394  
Fax: 952-226-2369  
E-mail: [jcrefuge@safecastle.net](mailto:jcrefuge@safecastle.net)

Visit us online:  
[www.safecastle.com](http://www.safecastle.com)  
[www.safecastle.blogspot.com](http://www.safecastle.blogspot.com)

# Safecastle Shelters

Safecastle fallout shelters, storm shelters and safe rooms are the absolute best protective option a household, business, or community association can have in a world of uncertainty and danger. Quite simply, Safecastle LLC is in the business of providing steel-plated peace of mind.

## Build Confidence in Your Future

Whatever your needs - to provide your family or group full protection from catastrophic storms, from criminal or terrorist attack, from industrial accidents, or even from acts of war or societal chaos - Safecastle shelters are your assured, high-quality solution. The continued well-being of others is in your hands. Take the reasonable and cost-effective step that allows you to maintain control over the situation, for their sake. In comparison, all other potential measures leave you bearing significant risk.

## Experience Counts

The heavy-gauge steel-plated shelter or safe room you are considering has been engineered to meet or exceed FEMA standards in all respects. It comes with a lifetime warranty covering workmanship and structural integrity. Over 500 shelters have been custom built and installed all over the United States in the last 14 years. Some of them have literally saved lives. These shelters are counted on in private, corporate, and government applications wherever full-bodied security is required.

## Building a Home or Addition?

You can add a secure shelter to your home or business at any time - depending upon your property and existing structure. But if you are about to start building a new home, an addition, or a business facility, this is your BEST, most cost-effective opportunity to integrate a shelter from worry into your outlook. Your options are many, and we will provide the exact shelter you specify at an affordable price. We'll build it, deliver it, and even install it as needed.

It's unparalleled peace of mind we sell. As large or as small as you require - below ground or above ground - your Safecastle shelter will always be there for you in time of need.

*All of our pricing information can be found on the insert in this brochure.*

# Have a Look at a few of the Life-Sustaining Features



An advanced sewage system is available as an option. The discharge pump for the sewage system is inside the tank. We install the water lines, air inlet, and sewage outlet line thru the top of the shelter. The 3" vent pipe has a 300 PSI valve mounted inside the shelter. This valve must be shut off if there is a chemical or biological problem outside. The system will still work with the valve shut.

An important standard feature in our fallout shelters is a Swiss-made chemical and biological filtration/ventilation system. Included with the system are: the blast valves, pre-filter with metering device, A.C. power motor for air intake, and hand crank for air intake in the event of electrical power outage. Other options are also available.



32" x 32" fallout shelter blast-door hatch entrance with ladder type steps. An alternative is an optional stairway with walkway to deflect potential radiation into the shelter.



Within this multi-unit shelter, a room with two optional bunks and filtration system.

## Lease to Own \*NEW\*

We are now offering a lease-to-own program on an above-ground storm shelter. This is a 7øtall, 6øwide, 8ølong shelter. We require \$3,100 at time of purchase plus the delivery charge of \$2.05/mile one-way from our builder's facility in Louisiana to your location. We install the shelter as specified by our structural engineer. The land must be owned by the buyer. The shelter and installation exceeds FEMA requirements.

Down payment may be made by cash, check, or credit card. After the installation is complete, you pay \$225/month for 48 months. Your first payment is due 30 days from the completion of installation. **Note:** This shelter is built to be moved, if necessary.

## Garage Storm Shelter \*NEW\*

We are now offering an option on above-ground shelters with doors large enough to drive a vehicle into the shelter. These doors add about \$2,400 to the price of the shelters on page 5. The doors fit on our 10øwide above-ground shelters. A 10øwide 20ølong shelter would be large enough for a small to medium-size vehicle. For a full-size car or truck, you would need a 10øx 30øshelter. For two full-size vehicles, you would need a 50ølong shelter.

## Join our Preparedness-Products Buyers Club

Join today... only a one-time, lifetime \$49 membership fee!

**Members get FREE SHIPPING to the lower 48 and at least 20% off most everything in our store, all the time! 30-year storage food, water filters, decontamination kits, survival kits and tools, and much more!**

Go to: [www.safecastle.com](http://www.safecastle.com)

## Storm Shelter Features And Options

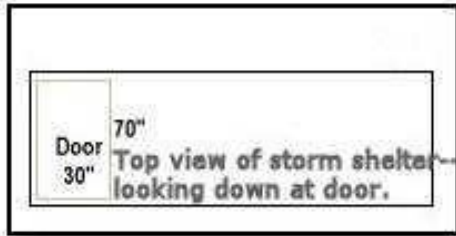
### Our basic storm shelters consist of these standard features:

- Metal shelter with heavy-duty channel iron bracing.
- Prepackaged magnesium anodes. Each shelter receives the required number of anodes for cathodic protection against corrosion. These anodes add many years to the already long life expectancy of our shelters.
- Double exterior coatings for flawless moisture protection.
- Interior is primed, painted, and carpeted
- Turbine vent keeps fresh air circulating through the shelter. Each vent has insect screens.
- We install (4) heavy duty hinges and (3) heavy duty latches on each door.
- Door also has lift cylinders to make it easy to lift and lower.
- The top of our storm shelters are approximately 2øbelow ground.
- Door opening is approximately 30ø x 70ø.
- Regular steps with removable handrail. The steps have raised expanded metal to prevent slipping.
- Inlets for electric lines, cable, telephone lines, etc.
- Hooks on ceiling to hang lanterns, lights, etc.

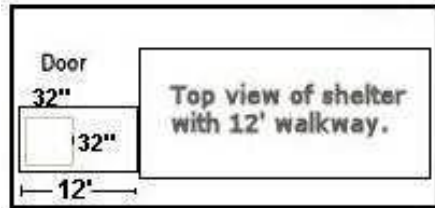
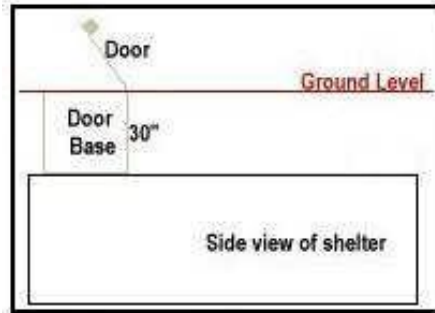
### The following are options that we offer:

- Underground, walk-in security vaults. These vaults can be built into any of our storm and fallout shelters, 10øor longer.
- A safety option that we can install is a hydraulic jack rated at 8 tons, which will lift the door in excess of 20 inches. This will keep you from being trapped inside by blown down debris.
- We offer fold-up beds that fold against the wall when not in use. They take up approximately 8øof space when folded. We can install one bed in an 8ølong shelter, and up to 5 beds in a 20ølong shelter. The beds are sold by frame, or complete with inner spring mattress.
- A small, sturdy outside handrail may be added.
- We can build your storm shelter with a second set of steps and a second door. This is most commonly done when one door is inside a home or building and the other door opens to the outside.
- We can build a small emergency exit, or trap door, with no steps for an additional cost. See price list insert.
- We can install a sewage system for an extra fee. This covers the installation of the discharge pump, water lines, air inlet, and sewage outlet line through the top of the shelter. You will need to run the appropriate lines from outside of the shelter to the unit. We can also install a hand pump in case electrical power is lost.  
**NOTE:** The commode itself must be supplied by the customer. You can also add a bathtub and sink to this unit.
- NEW- Look outside thru safety windows. Heavy gauge metal shutters cover safety windows without having to go outside to open or close them. This is for above-ground shelters.

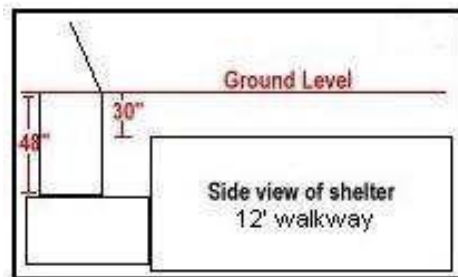
## NBC Shelters



A typical top(left) and side(below) view of an NBC shelter, without a walkway.



A typical top(left) and side(below) view of a NBC shelter with a walkway.

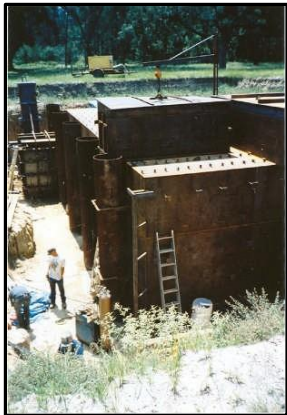


## Essential Information

- 1) Building a new home or remodeling your present home? It is the ideal time to install one of our shelters or saferooms, above or below ground. Before you pour the concrete or lay a foundation, let us install a unit where the shelter entrance will be in a closet, bedroom, pantry, or anywhere you choose in your home. Having the entrance inside your home makes it easy to escape to, even in the middle of the night.
- 2) Our 7ø x 10ø x 30ø will accommodate up to 60 people, according to F.E.M.A.ø guidelines. Our 7ø x 20ø x 100ø shelters house 400 people! These are ideal for churches, businesses, mobile home parks, and small communities that want to share the security of the shelter. With several people sharing the expense, the cost is very low for each individual.
- 3) We put up to 25 yards of concrete under each shelter. The shelters have up to 25 anchors under them, attaching the shelter to the concrete. When installed, our shelters weigh approximately 120,000 pounds, safe in winds up to 330 mph!
- 4) Some people are concerned about lightning striking the metal shelter while they are inside. According to electric companies and the National Weather Service, the safest place to be in a lightning storm is inside a metal box. Once inside, you are completely safe.
- 5) If you have a child who spends time home alone, the shelter can offer protection from intruders. The child could go into the shelter and latch the door if someone tried breaking into your home. Run a phone line inside and the child can call for help. The door can be handled by a 7 or 8 year old child.
- 6) Ours are the BEST-value shelters available--we custom build them for delivery and installation anywhere in the U.S. ... above-ground and below-ground storm shelters, fallout shelters, and saferooms. Our builder has more than 15 years of experience, with over 500 shelters installed, to include work done for FEMA, government groups, corporations, and households. State-certified engineering drawings are included in case local building inspectors require them.
- 7) ... As if we need to remind you ... our world is full of nuclear weaponry, biological and chemical weapons, nuclear power plants, chemical plants, and trucks and trains transporting most of this stuff all around us. Not only that, it's clear that there are a lot of folks out there who want nothing more than to do the most amount of damage possible to the United States and our population. Numerous government officials have reminded us time and again that it's not a matter of IF, but WHEN a major disaster will befall us. Whether in an intentional attack or a tragic accident, the people nearest "ground zero" will be on their own. Will you be prepared?



## Installation Pictures



A recent mega shelter



Custom features in this project include 11-foot ceilings, elevators, and a spiral staircase! Fully self-contained, there are impenetrable blast walls around the elevator shaft, over 140 yards of concrete throughout and surrounding the steel plate structure, almost 1000 gallons of water storage, plumbing, hot water, a bunk house, a generator house, escape hatches, an antique wood ceiling, a kitchen, tiled floors, and much more.



Two 7' x 8' x 25' shelters with 20' long walkway and blast door.



Shelter being lowered into wet cement.



We deliver to most places in the continental U.S.

## NBC Shelter Features And options

Basic NBC and Fallout shelters consist of these standard features:

- Metal shelter made with plate metal up to 7/16" thick
- Blast door approximately 32" x 32" with heavy duty latches, hinges, and lift cylinders to make door easy to lift and lower.
- The VA 40 Filtration System with hand crank and A.C. electrical function, includes ventilator, crank handle (in case of power outage), emergency light, cover and set of rubber hoses, chemical/biological gas filter, intake and exhaust blast valves, all mounted in shelter to enable a positive air pressure environment. This unit is rated for 12 people or less. Larger units are available.
- Ladder type steps going down into shelter.
- The door base is 30" tall, for 30" shelter depth. Additional depth is possible.
- Magnesium anodes for corrosion protection, adding years to the already long life expectancy of the shelter.
- Double exterior coatings for exceptional moisture protection.
- Appropriate inlets for electric lines, cable, telephone and water lines, etc.
- Hooks on ceiling to hang lanterns, lights, etc.

The following are options that we offer:

- Underground, walk-in security vaults. These vaults can be built into any of our storm and fallout shelters, 10' or longer. See price list insert for additional costs.
- Add a vault door at the end of the walkway. This door has hardened steel and deadbolt lock.
- Our NBC shelters come with a chemical and biological filtering system rated for 12 people or less. We can add a unit large enough to accommodate 25 or one to accommodate 50 people for an additional charge. See insert.
- We offer fold-up beds that fold against the wall when not in use. They take up approximately 8" of space when folded. We can install one bed in an 8' long shelter, and up to 5 beds in a 20' long shelter. The beds are sold by frame, or complete with inner spring mattress.
- Sewage system with electric motor and hand pump. The higher price in this shelter type is due to an extra blast valve necessary to make this unit function properly.
- We can enclose the sewage system unit with insulated wall and door.
- We can build a small emergency door, or trap door, with no steps for an additional charge.
- A safety option that we can install is a hydraulic jack rated at 8 tons, which will lift the door in excess of 20 inches. This will keep you from being trapped inside by blown down debris.
- We can weld two shelters underground, but there is an additional fee to the installed prices.

# Above Ground Storm Shelters And In-Home Saferooms

All of our shelters meet the National Performance Criteria for Tornado Shelters. Remember, many shelters on the market don't meet these requirements. Our shelters are built for safety, comfort, and long life expectancy. Our shelters will provide a space where you and your family can survive any tornado or hurricane. The Wind Engineering Research Center at Texas Tech University has done extensive research on different types of safe rooms, including metal safe rooms. All of our shelters and safe rooms are made of heavy gauge steel. The steel we use is almost twice as thick as the WERC requires it to be. Our underground shelters, safe rooms, and anchoring systems have all been tested for safety by a structural engineer.

## Installation

Your safe room is brought to your location completely assembled. We install this shelter anywhere you are pouring a concrete slab for a new home, business, office, or pouring concrete to add a room or patio to an existing home. When you are framing to pour this concrete foundation, remember, the concrete under the safe room (and extending one foot past the safe room on all four sides), has to be at least 16" thick. Example--for a 7' wide by 10' long safe room, the concrete will be 16" thick in an area 9' wide and 12' long. When installing the safe room inside a home, no walls or ceiling can be attached to the safe room. Our safe rooms can be installed in a walk-in closet, pantry, bedroom, etc.

The door in a 6' tall safe room or above-ground shelter is approximately 5'10" tall and 34" wide. In the 7' tall shelters, the door is about 6'6" tall and 34" wide. This door has a pick-proof, hardened steel, deadbolt lock. A safe room can be used as a security vault, closet, storage room, etc., as well as a storm shelter. All of our shelters and saferooms are designed by a structural engineer to withstand 330 miles per hour wind. They are certified to meet or exceed all of FEMA's requirements.

## Delivery

We deliver the safe room to the location where the home or business is being built. The safe room would have to be placed into wet concrete by your home builder. This can be done with a backhoe, crane, or whatever the home builder has available.

The door is almost flat against the concrete foundation. The dimensions of the storm shelter door are about 32" by 71". Heavy-duty latches are attached to the door inside in case of a tornado or an intruder. We also custom build the doors whatever width you need from 18" to 38" wide. The doors can be put on either side or either end of the safe room.

*Note: Delivery charges for your shelter are based on the shelter size and mileage from our factory to your site.*

# Saferoom Features And Options

## Our basic Saferooms consist of the following:

- We now have a saferoom with smooth outside walls. They are painted white and are very attractive. The inside is primed, painted, and carpeted. The outside is coated with a white epoxy primer and white paint. You may repaint the walls any color you choose.
- With the saferooms, the dimensions are given for the outside of the saferoom. If you are going to put this in a home or business that you are going to build, we can build to fit in any area you have chosen. (Example) If you have an area 5ø4ø wide by 6ø8ø long and 7ø1ø tall, we can build the saferoom 5ø3ø wide by 6ø7ø long by 7ø tall, so it will fit in the area you have chosen.
- We can build to fit under staircases, in back of a walk-in closet, etc. We can also build them large enough to be used as a bedroom, office, pantry, or closet.
- These saferooms come with a hardened steel deadbolt lock. If you do not need the deadbolt locking system, you can have a latch instead. The door can be opened from inside or outside.
- No walls or ceilings can be attached to the saferoom. They can be touching as long as they are not attached.
- We can put a 4ø pipe out the top or anywhere else you want us to, to hook the HVAC duct onto the saferoom. Inside, the pipe will have a slide to close it off when you don't need the heat or AC.
- We include the plug-in and frame for your light fixture, so that you can have electricity inside.

## The following are options that we offer:

- We can add insulation and paneling for an additional price. Prices vary according to the size of the unit. Please call for more info/quote.
- We can install an air conditioner for an additional price. Prices vary according to the size of the unit. Please call for more info/quote.
- The normal saferoom is not safe from chemicals or germs. We can build it with an airtight door, add the appropriate vent pipes and add the chemical and biological filtering system to make it safe from any chemicals or germs known to man. This is extra. See Price List insert.



Saferooms have smooth outside walls, vault doors, and carpeting. Options include A/C and paneling.

