



**TouchAmerica's Bentley Retail Collection** is a stylish grouping of retail display furniture designed to boost retail sales. With its clean lines, the Collection highlights products displayed and delivers results. Developed in cooperation with Dr. Leon Alexander, author, speaker and designer of highly-productive retail environments, the Bentley Collection uses proven methods that enhance the customer's purchasing experience.

### Freestanding

- Double-sided display
- 36" or 48" width
- 6 display shelves with back panels
- 4 storage drawers
- Optional: LED shelf display lights



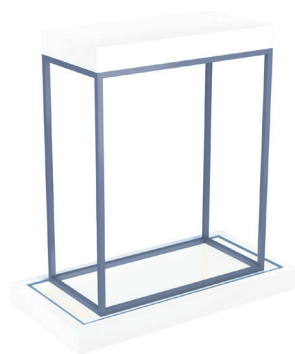
### Wall Displays

- 36" or 48" width,
- 3 display shelves with back panels
- 2 storage drawers
- Optional: LED shelf display lights
- Optional: Lightbox for logo display

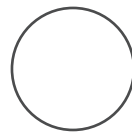


### Window Display

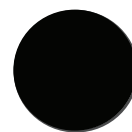
- 48" display table on open frame and platform base
- Optional: LED lights in platform accent top



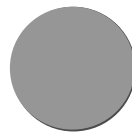
### COLOR OPTIONS:



WHITE



BLACK



GREY

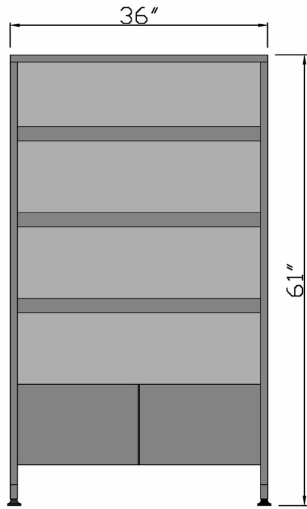
CUSTOM  
COLOR

### Launch Table

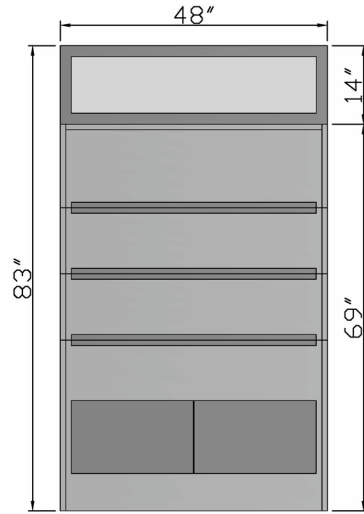
- 36" display table
- Two-door storage cabinet below table
- Optional: LED under mount display lights



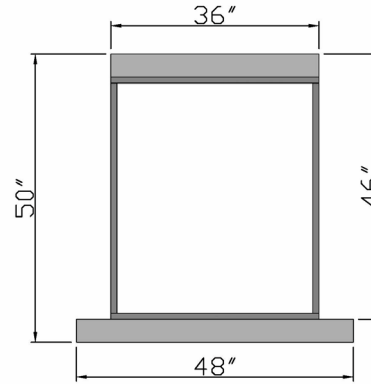
### FREESTANDING



### WALL UNIT



### WINDOW DISPLAY



### LAUNCH TABLE

