

PELLI LEATHERS

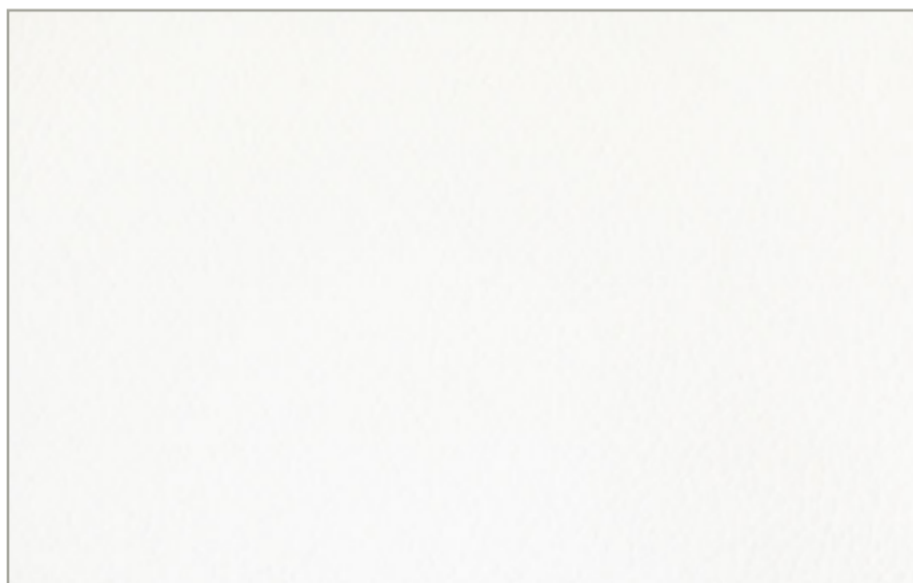


ESSENTIAL CAT. E



Pelli tinte con aniline e rifinite in un' ampia gamma di colori per soddisfare tutte le richieste di abbinamento.
Aniline-dyed leathers in a wide range of colours that can satisfy any matching requests.

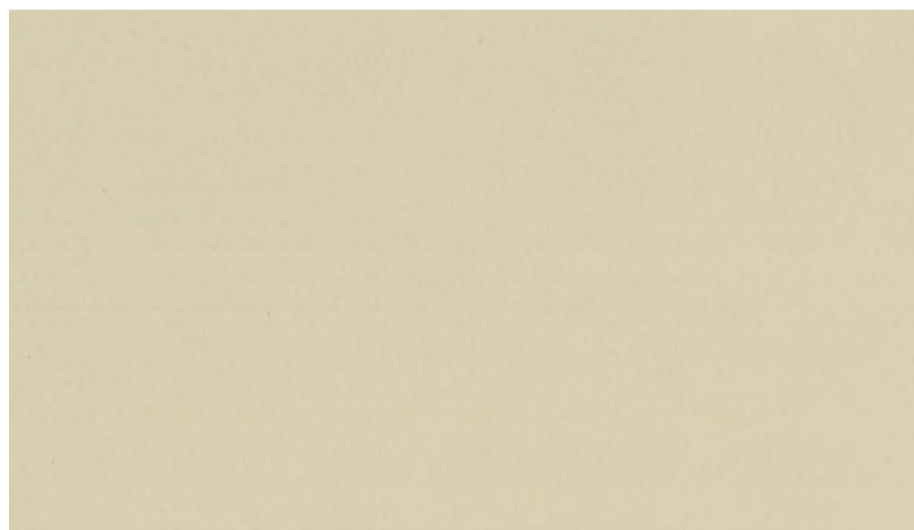
SPESSORE_THICKNESS : 1,2 - 1,3 mm
GRANA_GRAIN : grana naturale | natural grain
COLORE_COLOUR: uniforme | uniform
ASPETTO_SURFACE : semi-lucido | semi-glossy
TATTO_TOUCH : liscio | smooth



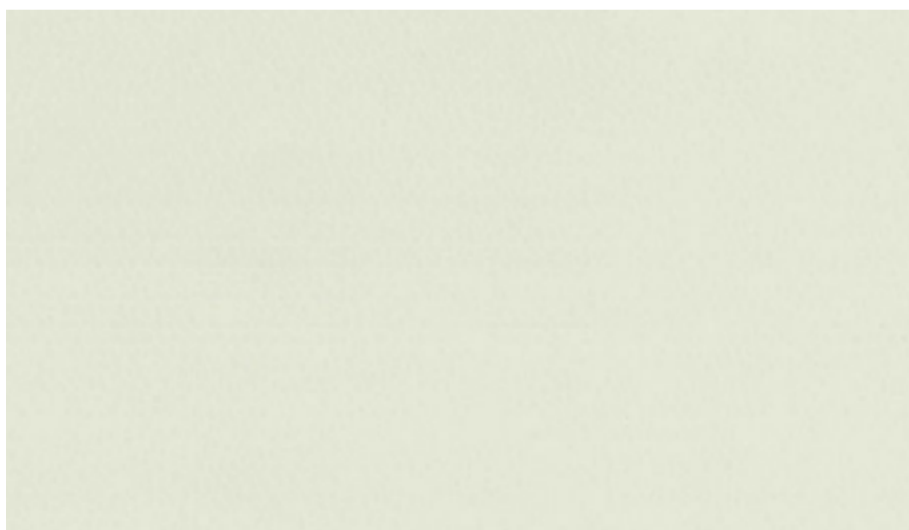
E1535_bianco | white



E15_avorio | ivory

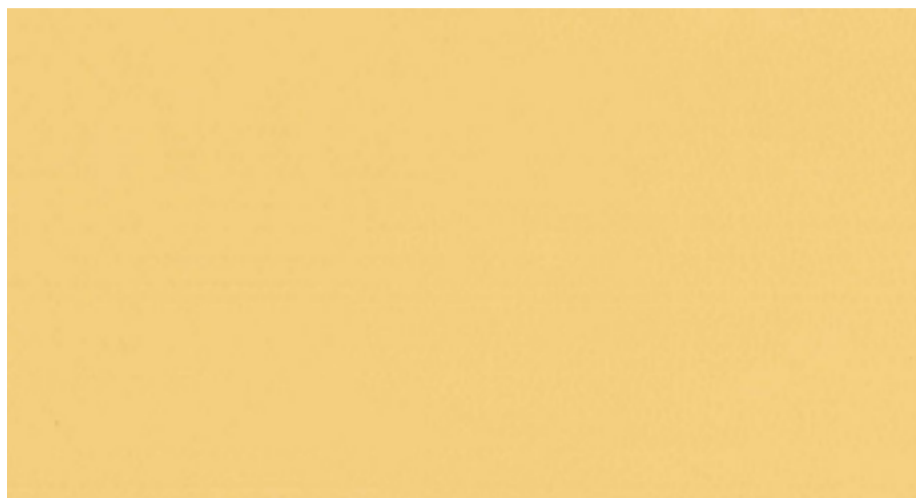


E06_beige

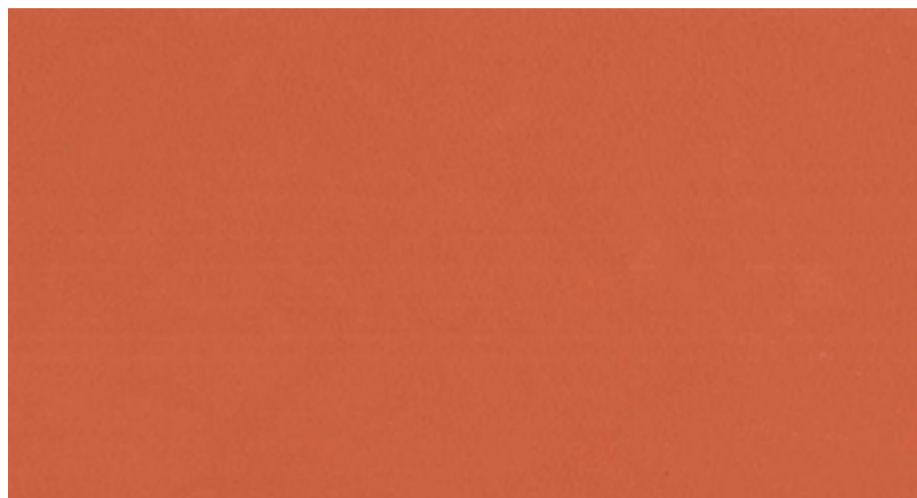


E01_ghiaccio | ice

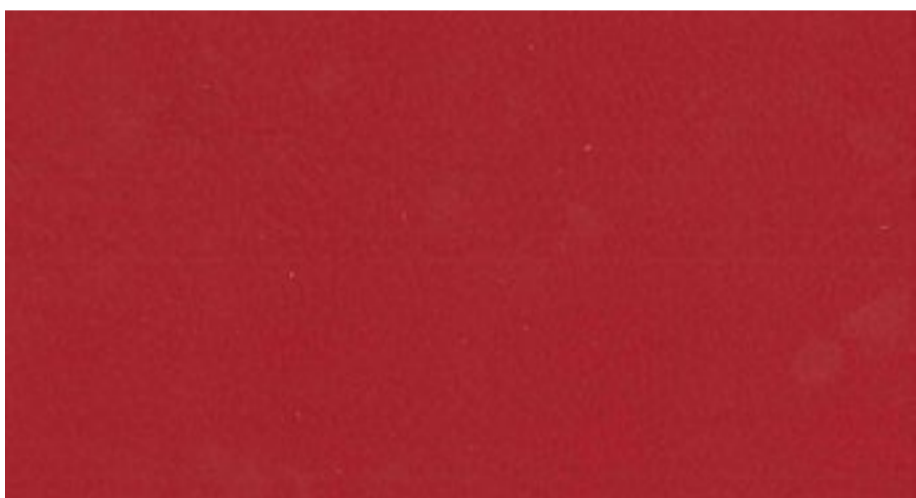
ESSENTIAL CAT. E



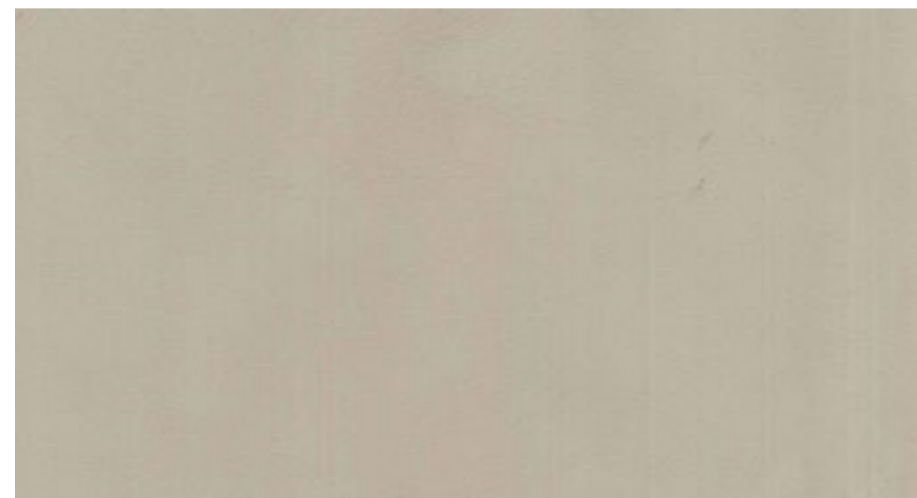
E PANNA_crema | cream



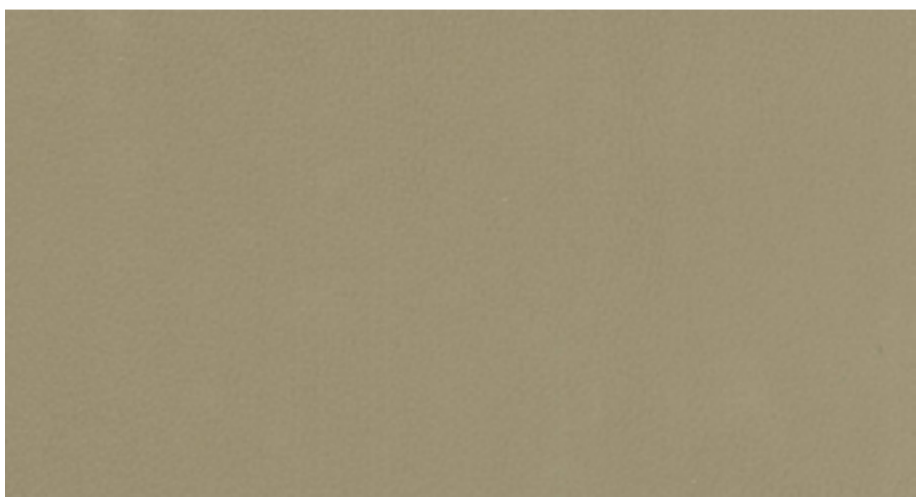
E09_arancione | orange



E17_rosso | red



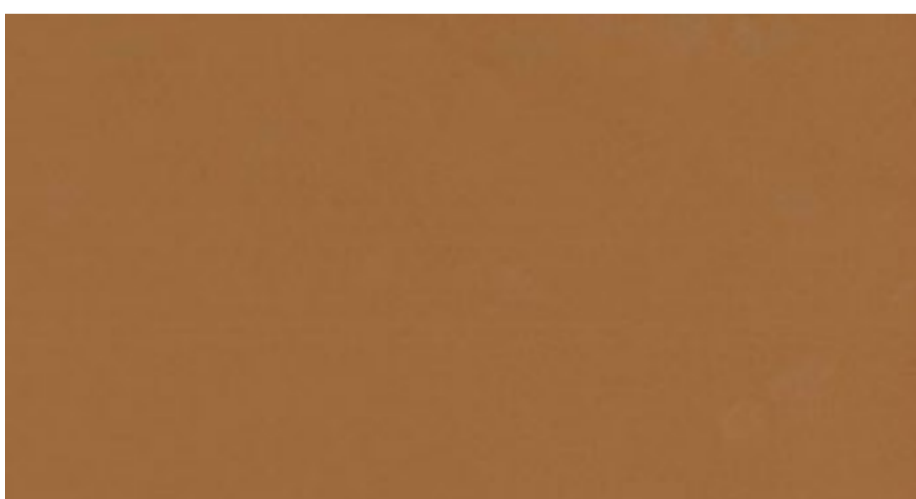
E16_sabbia | sand



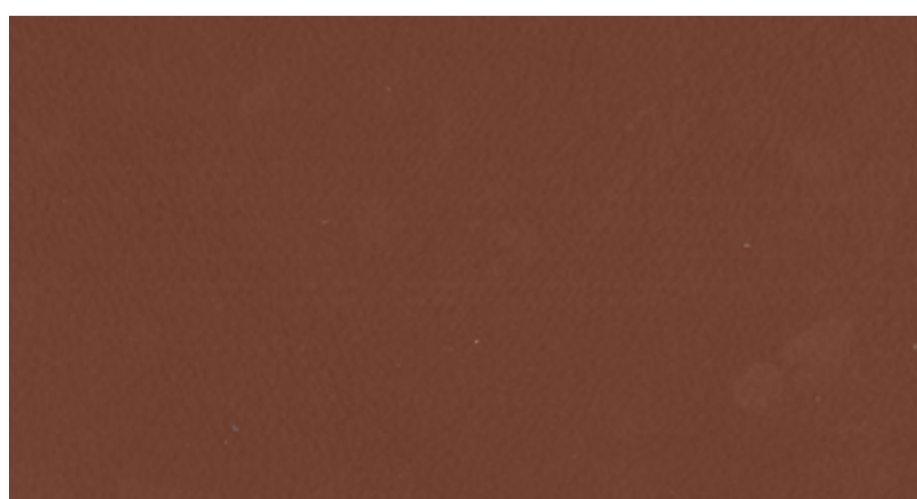
E02_cappuccino



E05_fango | mud

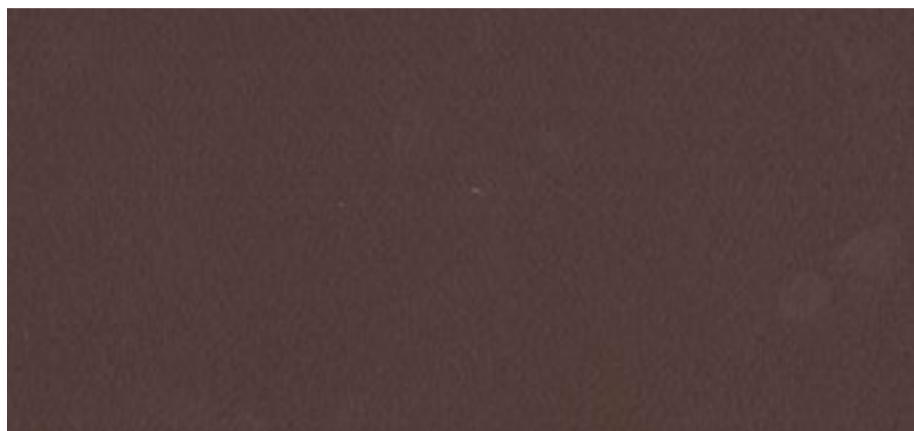


E12_cognac



E04_mattone | brick

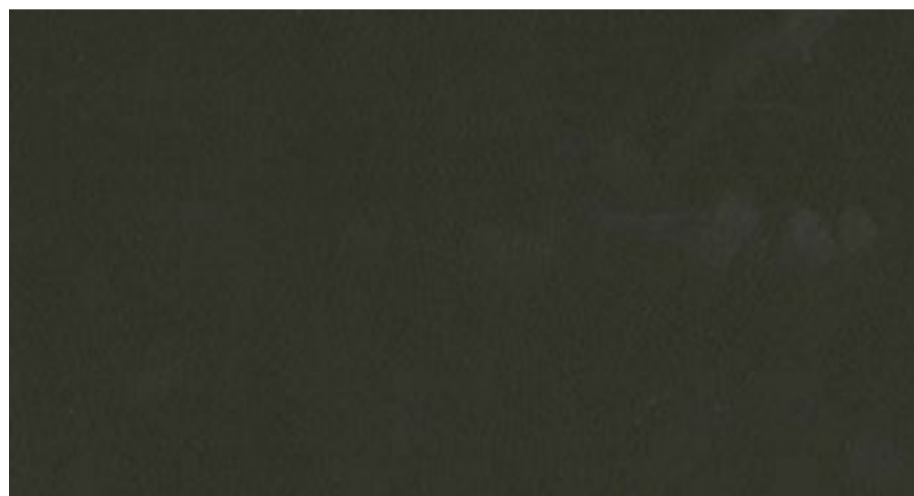
ESSENTIAL CAT. E



E13_bordeaux



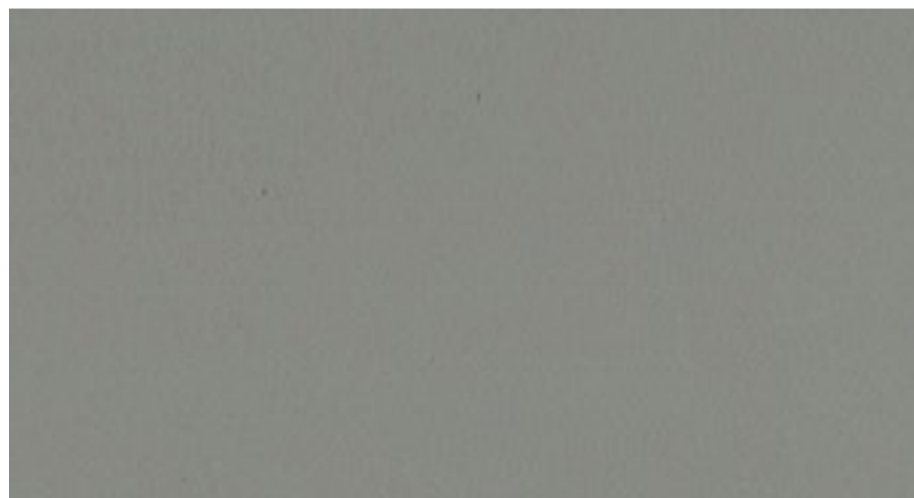
E499_cioccolato | chocolate



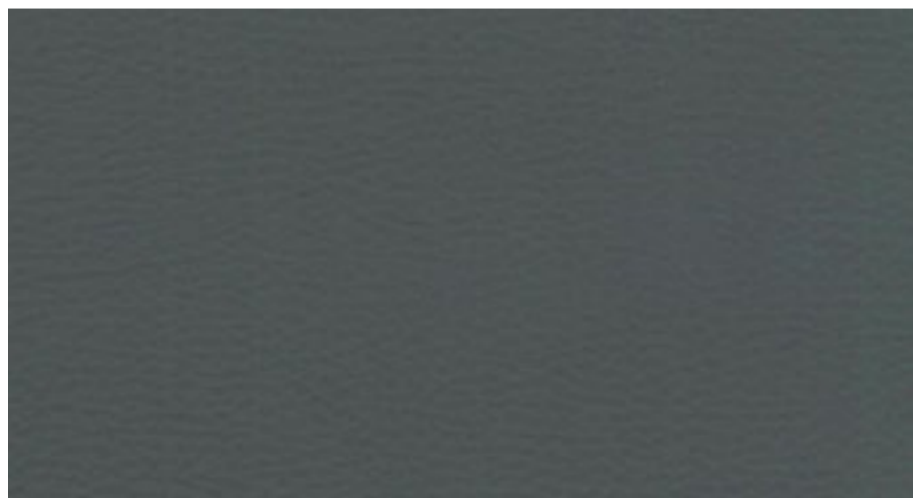
E1010_testa di moro | dark brown



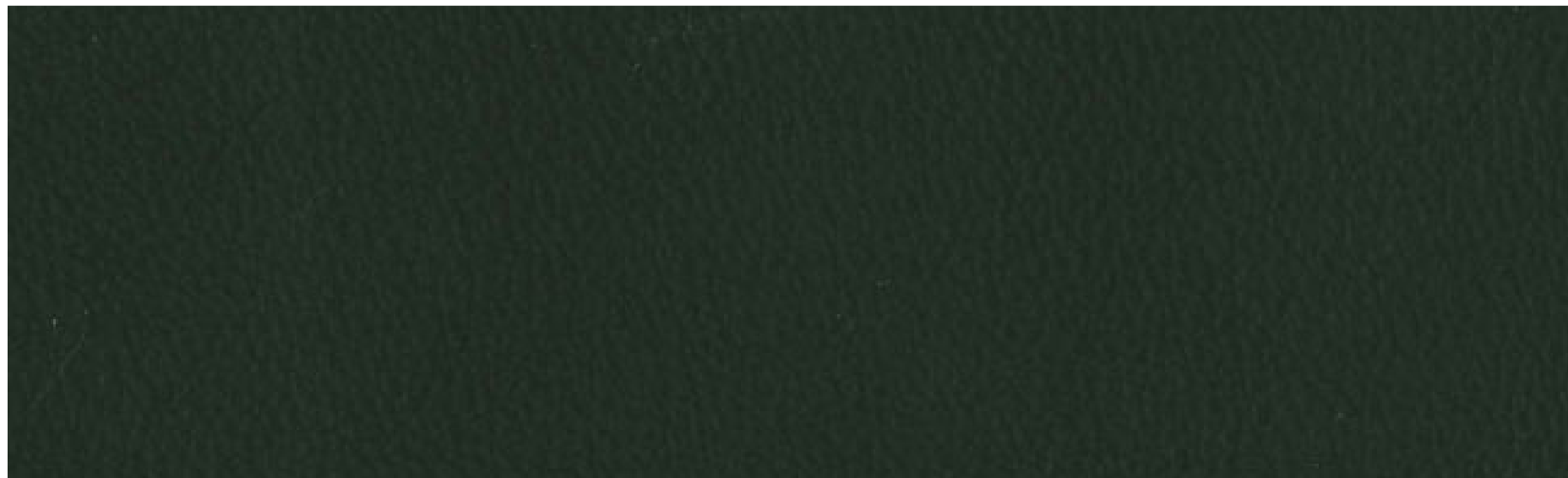
E210_blu | blue



E03_grigio chiaro | light grey



E28_grigio | grey



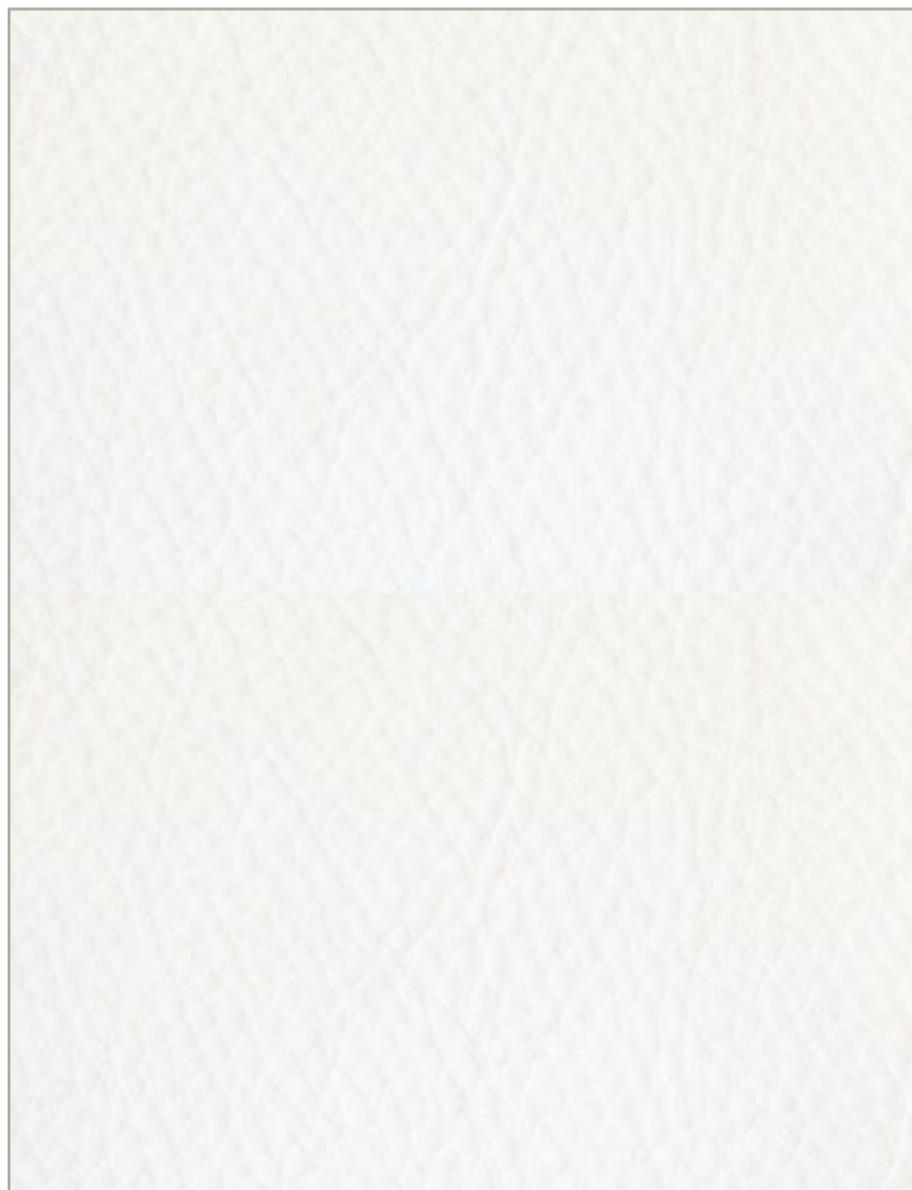
E1500_nero | black

DOLLARO CAT. E

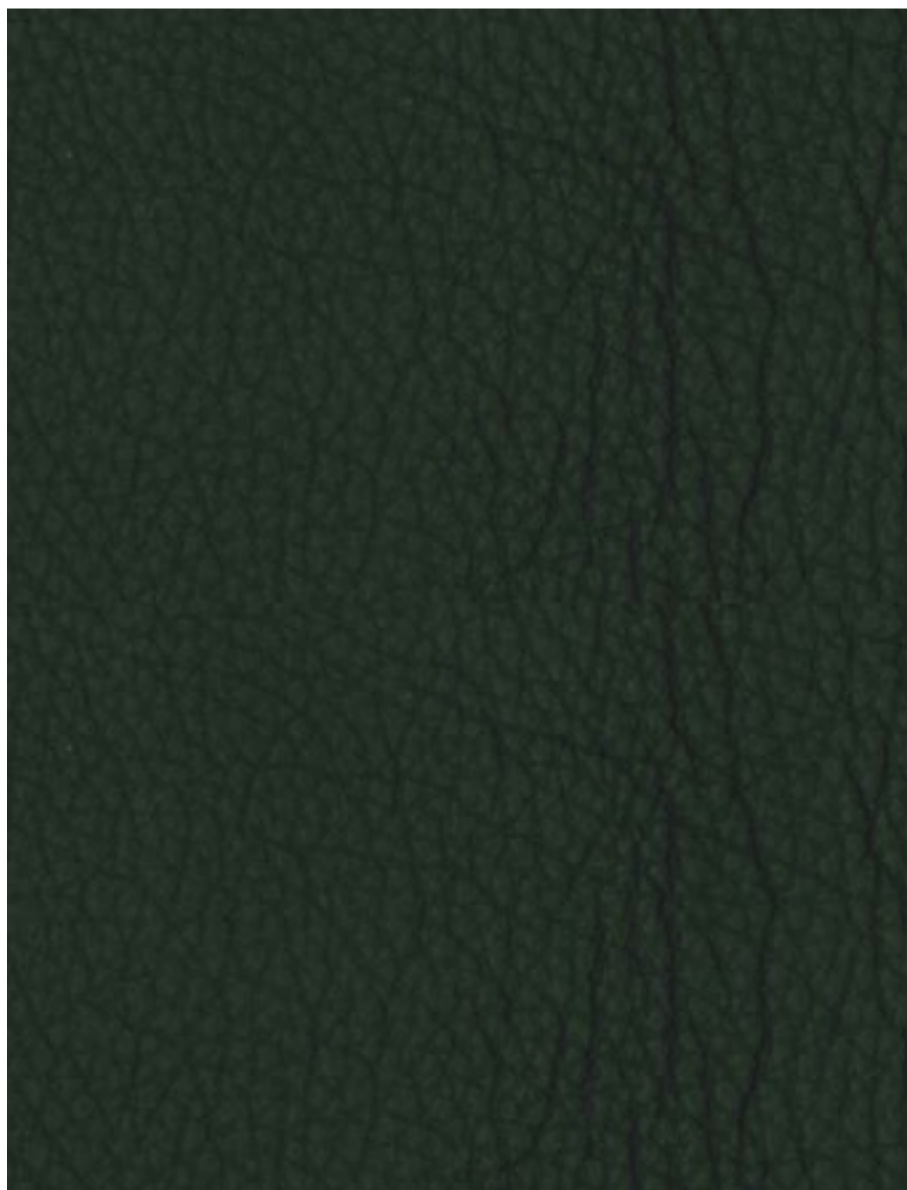
SPESSORE_THICKNESS : 1,2 - 1,4 mm
GRANA_GRAIN : grana grossa naturale | significant natural grain
COLORE_COLOUR: uniforme | uniform
ASPETTO_SURFACE : semi-lucido | semi glossy
TATTO_TOUCH : liscio | smooth



Pelli tinte con aniline e rifinite in un' ampia gamma di colori per soddisfare tutte le richieste di abbinamento.
Aniline-dyed leather in a wide range of colours that can satisfy any matching requests.



E19 DOLLARO_bianco | white



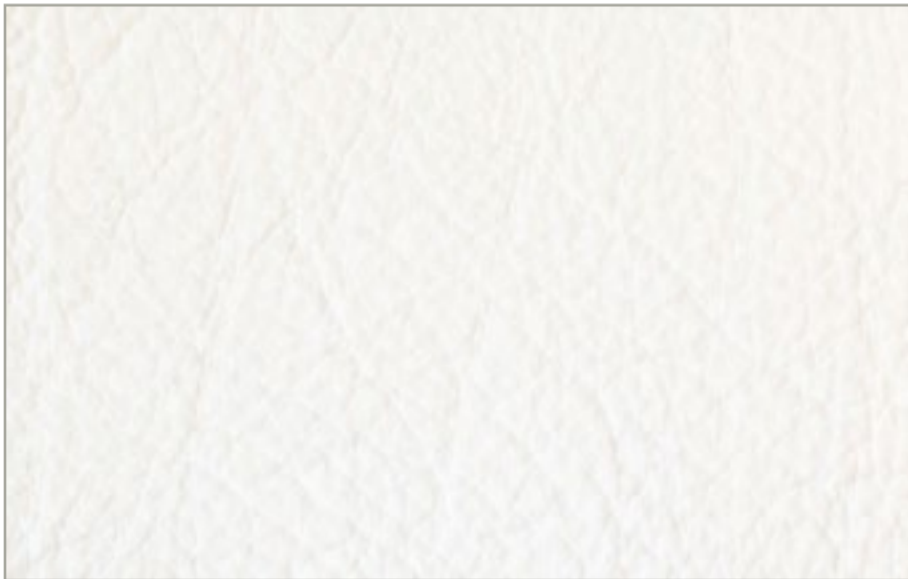
E DOLLARO_nero | black

BUFALO CAT. E

SPESSORE_THICKNESS : 1,4 - 1,6 mm
GRANA_GRAIN : grana grossa naturale | significant natural grain
COLORE_COLOUR : uniforme | uniform
ASPETTO_SURFACE : semi-lucido | semi glossy
TATTO_TOUCH : liscio | smooth



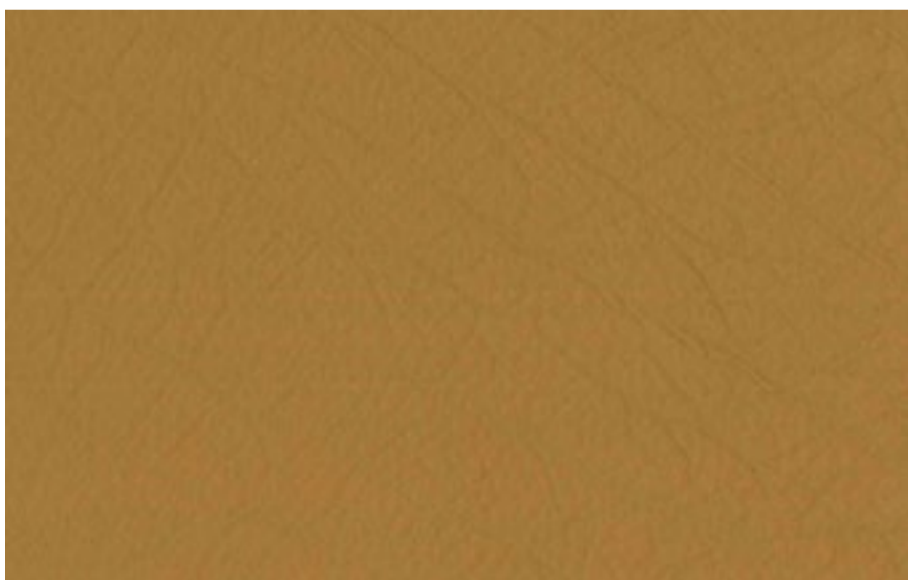
Pelli tinte con aniline e rifinite in un' ampia gamma di colori per soddisfare tutte le richieste di abbinamento.
Aniline-dyed leather in a wide range of colours that can satisfy any matching requests.



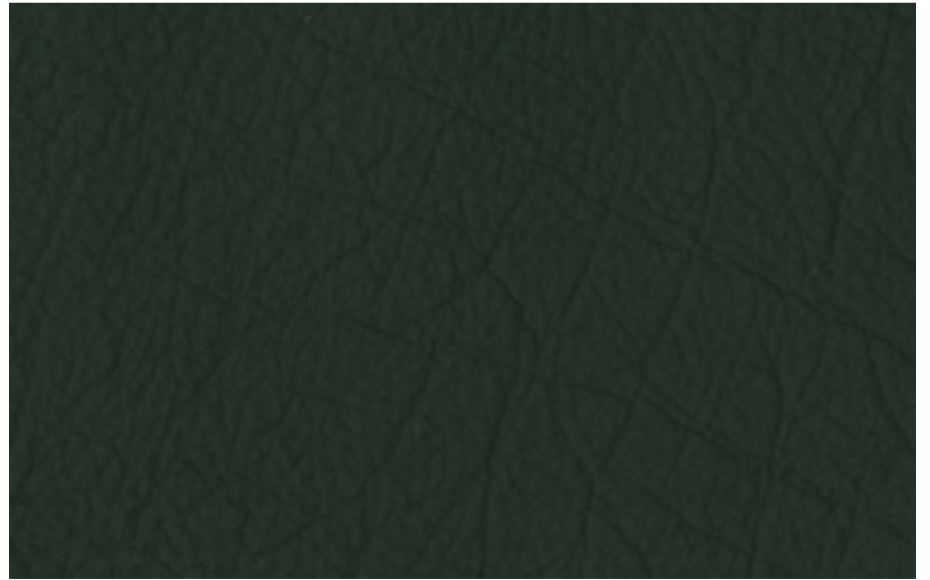
E506 BUFALO_bianco | white



E501 BUFALO_paglia | straw



E504 BUFALO_marrone chiaro | light brown



E505 BUFALO_nero | black

ANTIQUÉ CAT. F

SPESSORE_THICKNESS : 1,2 - 1,3 mm
GRANA_GRAIN : grana naturale | natural grain
COLORE_COLOUR: non uniforme | not uniform
ASPETTO_SURFACE : opaco | matt
TATTO_TOUCH : vellutato | velvety



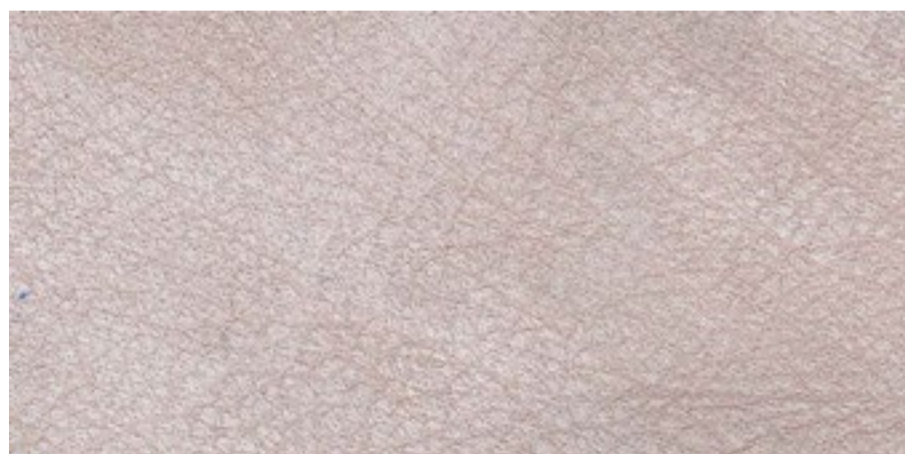
Pelli conciate al cromo, asciugate sottovuoto, rifinite con aniline e carteggiate manualmente ottenendo un effetto invecchiato. Particolarità di questo articolo è il connubio tra l'effetto "vintage" e un tatto vellutato.
Chrome-tanned leathers, dry vacuum leather finished with aniline and manually buffed obtaining a worn-look.
A special combination between an old-fashioned vintage look and the superbly soft touch.



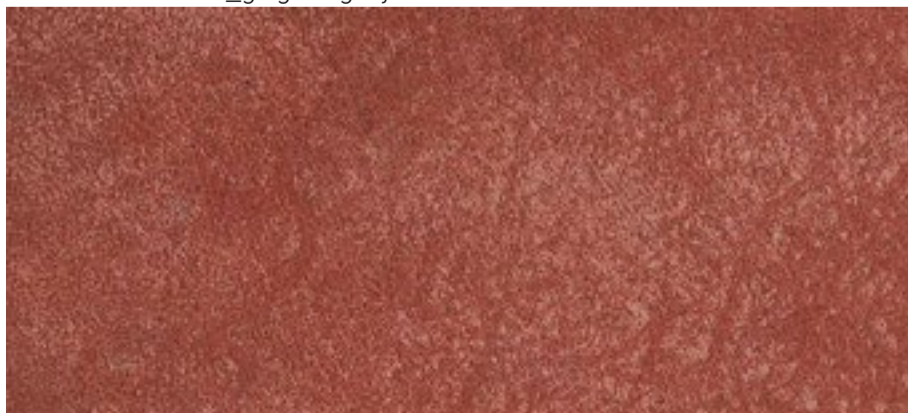
ANTIQUÉ_F92148 sabbia | sand



ANTIQUÉ F92147_grigio | grey



ANTIQUÉ_F92152 cipria | powder



ANTIQUÉ F92153_rosso | red



ANTIQUÉ_F92151_testa di moro | dark brown

ANTIQUE CAT. F / G



SPESSORE_THICKNESS : 1,0 - 1,2 mm
GRANA_GRAIN : grana fine naturale | fine natural grain
COLORE_COLOUR: non uniforme | not uniform
ASPETTO_SURFACE : opaco | matt
TATTO_TOUCH : liscio | smooth



Pelli conciate al cromo, pieno fiore, rifinite con cere.
Particolarità dell'articolo sono l'aspetto leggermente nabucato, naturale con un tatto di altissimo pregio.
Chrome-tanned leathers, full grain, finished with waxes.
Peculiarity of this article is to be slightly suede, have a natural appearance with a touch of highest quality.



ANTIQUE G713 blu / blue



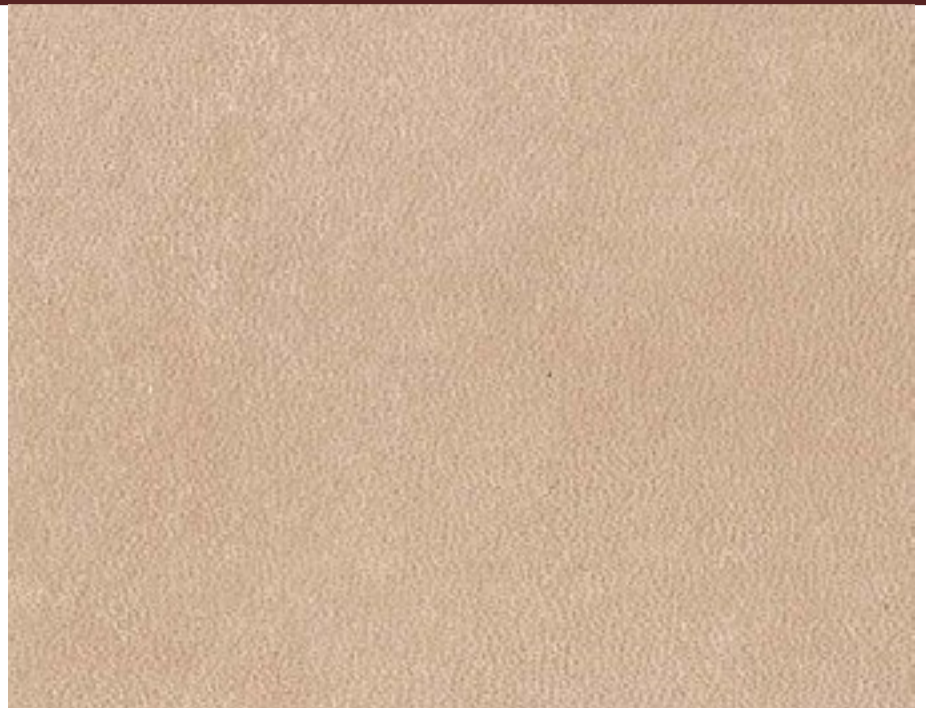
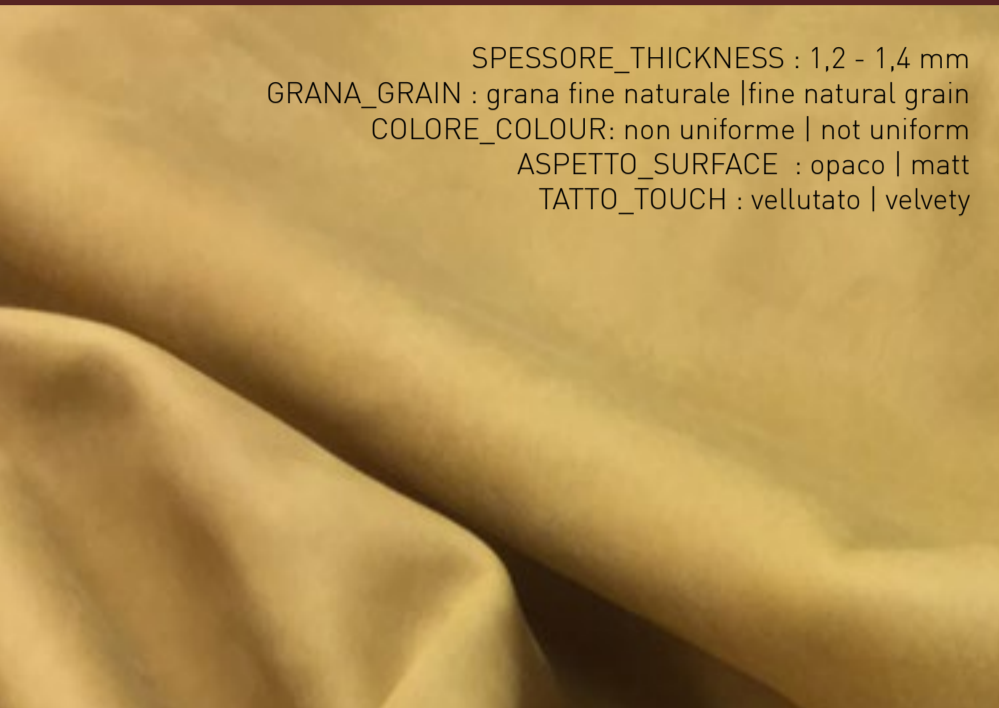
ANTIQUE F92139_prugna | plum



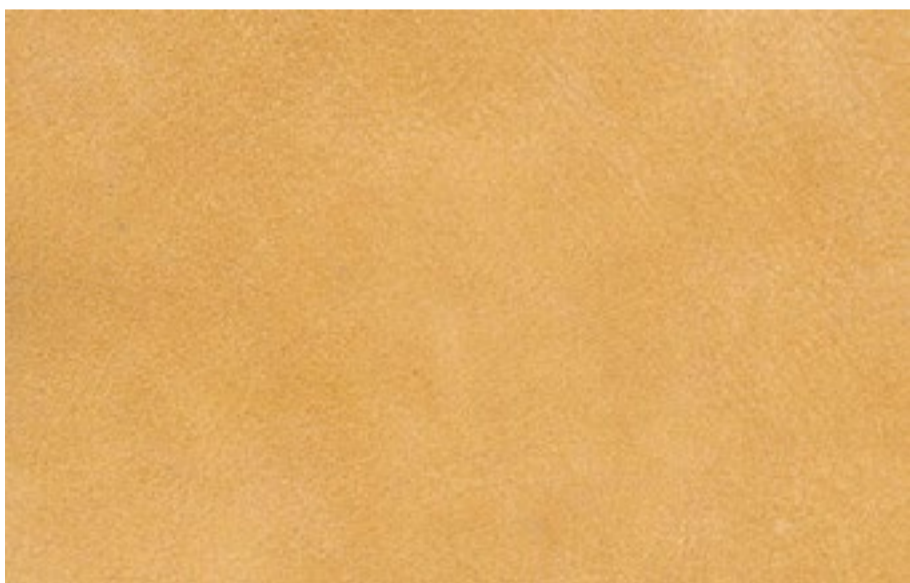
ANTIQUE_F92140 lilla | lilac

ANTIQUE WILD CAT. G

SPESSORE_THICKNESS : 1,2 - 1,4 mm
 GRANA_GRAIN : grana fine naturale | fine natural grain
 COLORE_COLOUR: non uniforme | not uniform
 ASPETTO_SURFACE : opaco | matt
 TATTO_TOUCH : vellutato | velvety



WILD G92146_sabbia | sand



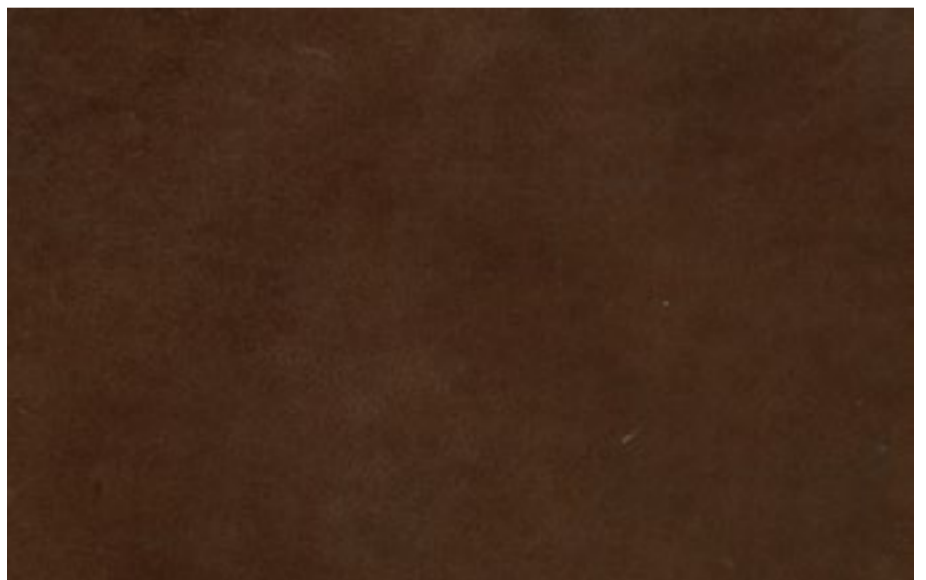
WILD G92144_zafferano | saffron yellow



WILD G92143_verde | green



WILD G92142_marmotta | marmot



WILD G716_marrone_brown

i Pelli conciate al cromo, asciugate sottovuoto, rifinite con aniline e carteggiate manualmente ottenendo un effetto invecchiato. Particolarità di questo articolo è il connubio tra l'effetto "vintage" e un tatto vellutato.
 Chrome-tanned leathers, dry vacuum leather finished with aniline and manually buffed obtaining a worn-look.
 A special combination between an old-fashioned vintage look and the superbly soft touch.

ANTIQUE CAT. G



PELLE NABUK | NABUK

SPESSORE_THICKNESS : 1,2 - 1,4 mm

GRANA_GRAIN : stampata | printed

COLORE_COLOUR: non uniforme | not uniform

ASPETTO_SURFACE : opaco | matt

IDRO REPELENTE | WATER PROOF



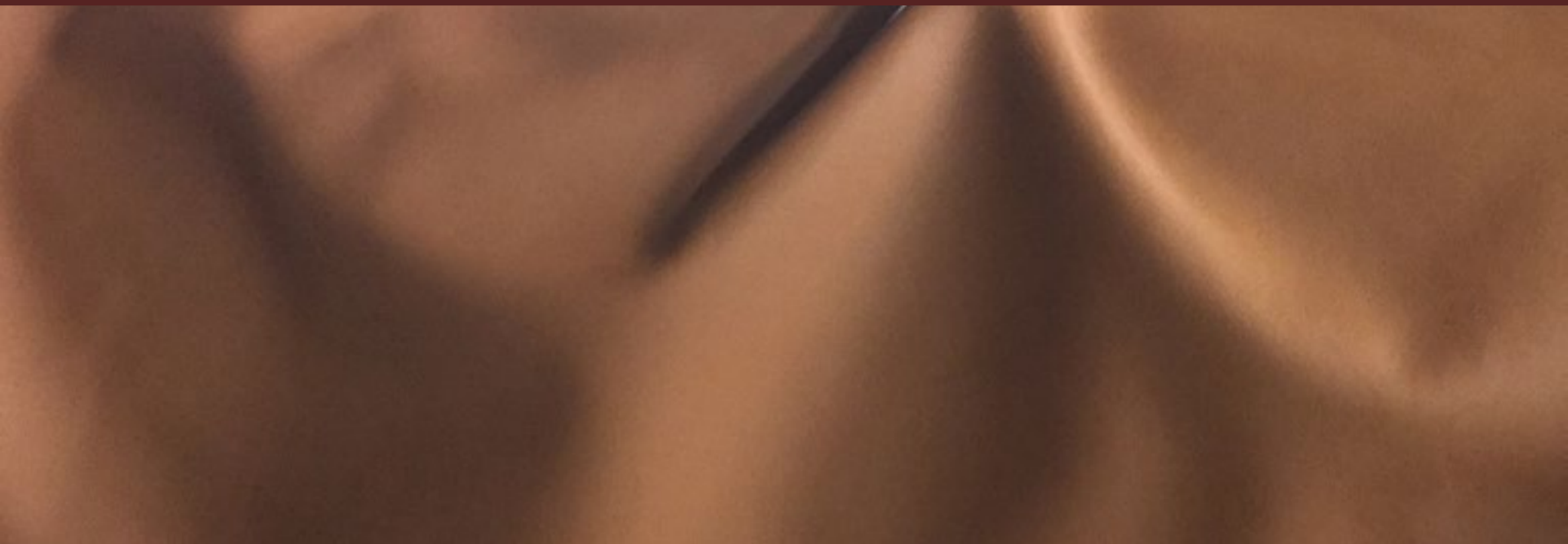
ANTIQUE G717_grigio | grey



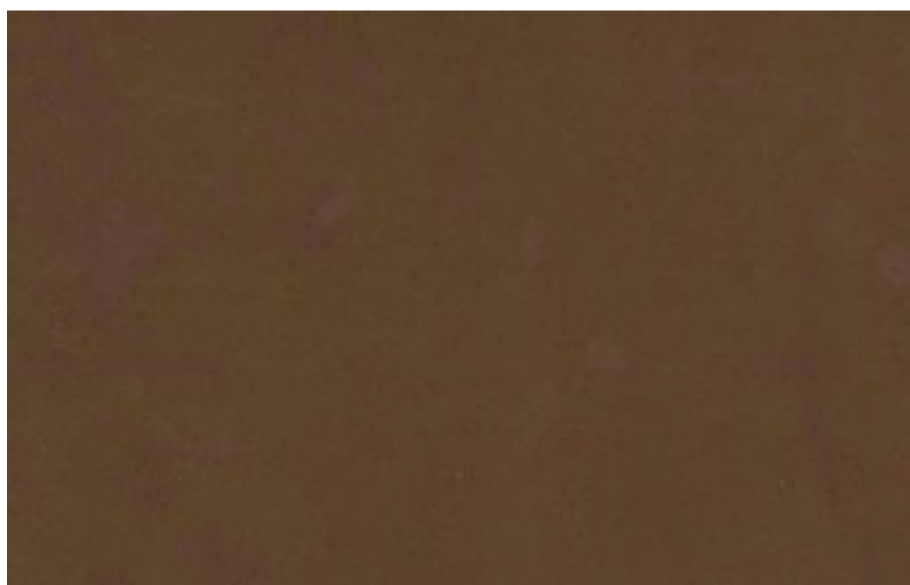
ANTIQUE G718_cappuccino

WAX

CAT. F

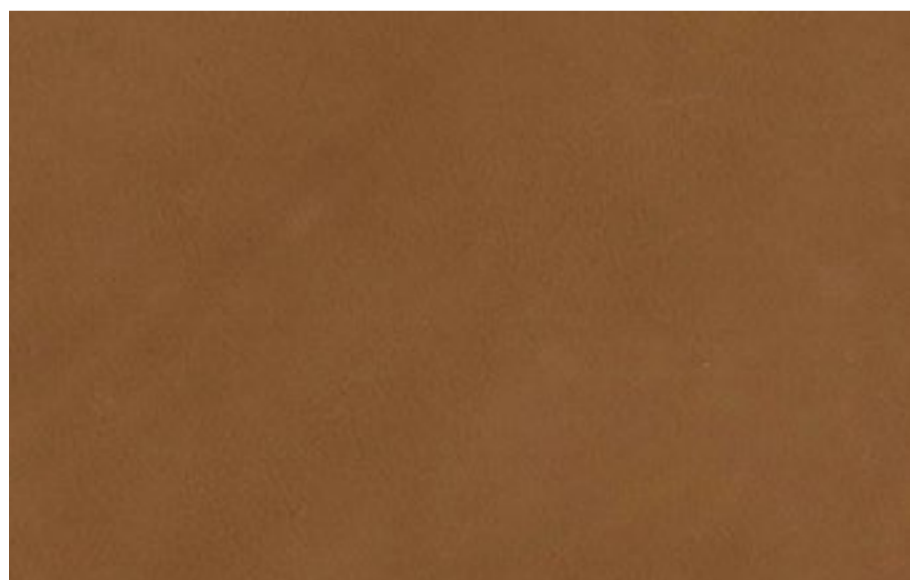


Pelle naturale trattata a cera.
Natural wax-treated leather .

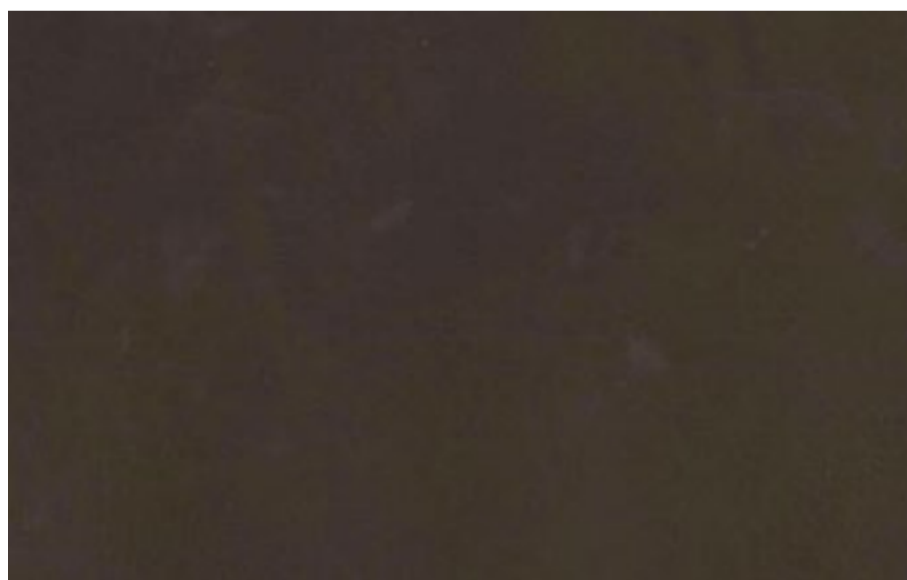


WAX F92118_tabacco | tobacco

SPESSORE_THICKNESS : 1,2 - 1,4 mm
GRANA_GRAIN : grana fine naturale | fine natural grain
COLORE_COLOUR: uniforme | uniform
ASPETTO_SURFACE : opaco | matt
TATTO_TOUCH : liscio | smooth



WAX F92111_cognac



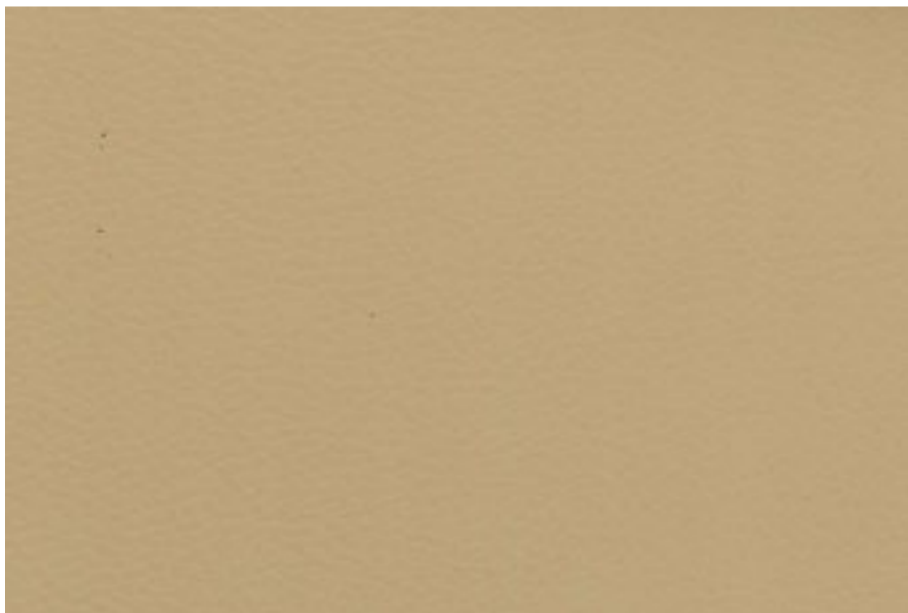
WAX F92115_testa di moro | dark brown

ULTRA SOFT CAT. F

SPESSORE_THICKNESS : 1,0 - 1,2 mm
GRANA_GRAIN : grana naturale | natural grain
COLORE_COLOUR : uniforme | uniform
ASPETTO_SURFACE : semi-lucido | semi-glossy
TATTO_TOUCH : liscio | smooth



Pelli conciate al cromo, tinte con aniline e rifinite. Taglia elevata, tatto eccellente, ottima resa, duttile a qualsiasi tipo di applicazione.
Chrome-tanned leathers, dyed aniline and finished; big size, excellent feel, excellent cutting gain, supple to any type of application.



F92129_segale | rye



F92126_argilla | clay



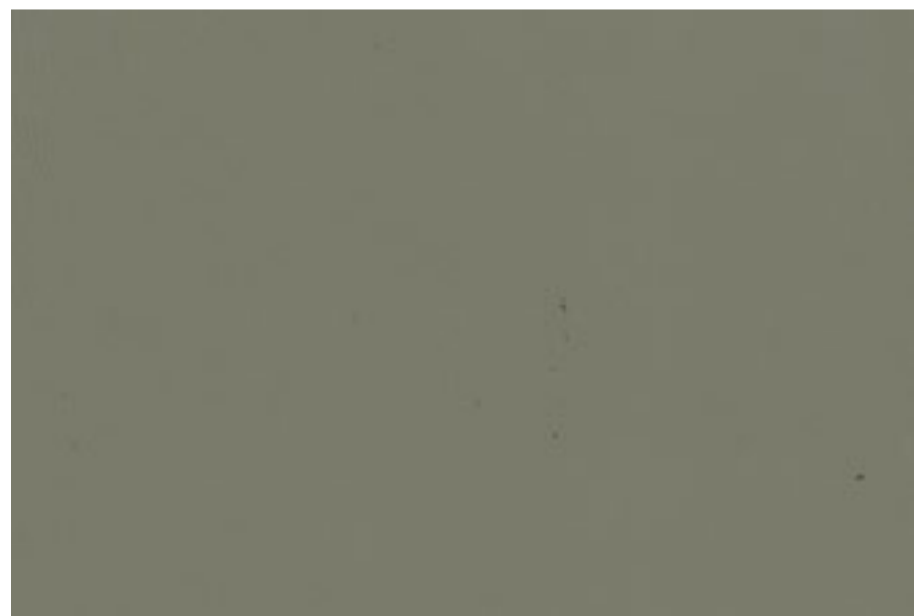
F92128_elefante | elephant

ULTRA SOFT CAT. F

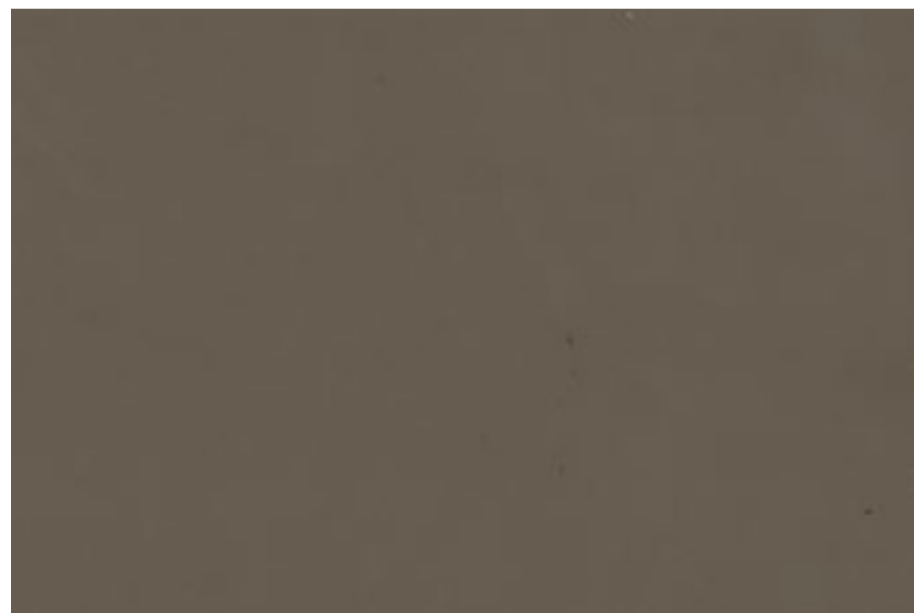
F92157_kaki



Pelli conciate al cromo, tinte con aniline e rifinite. Taglia elevata, tatto eccellente, ottima resa, duttile a qualsiasi tipo di applicazione.
Chrome-tanned leathers, dyed aniline and finished; big size, excellent feel, excellent cutting gain, supple to any type of application.



F92158_cemento | concrete



F92159_castoro | beaver



F92160_castagno | chestnut

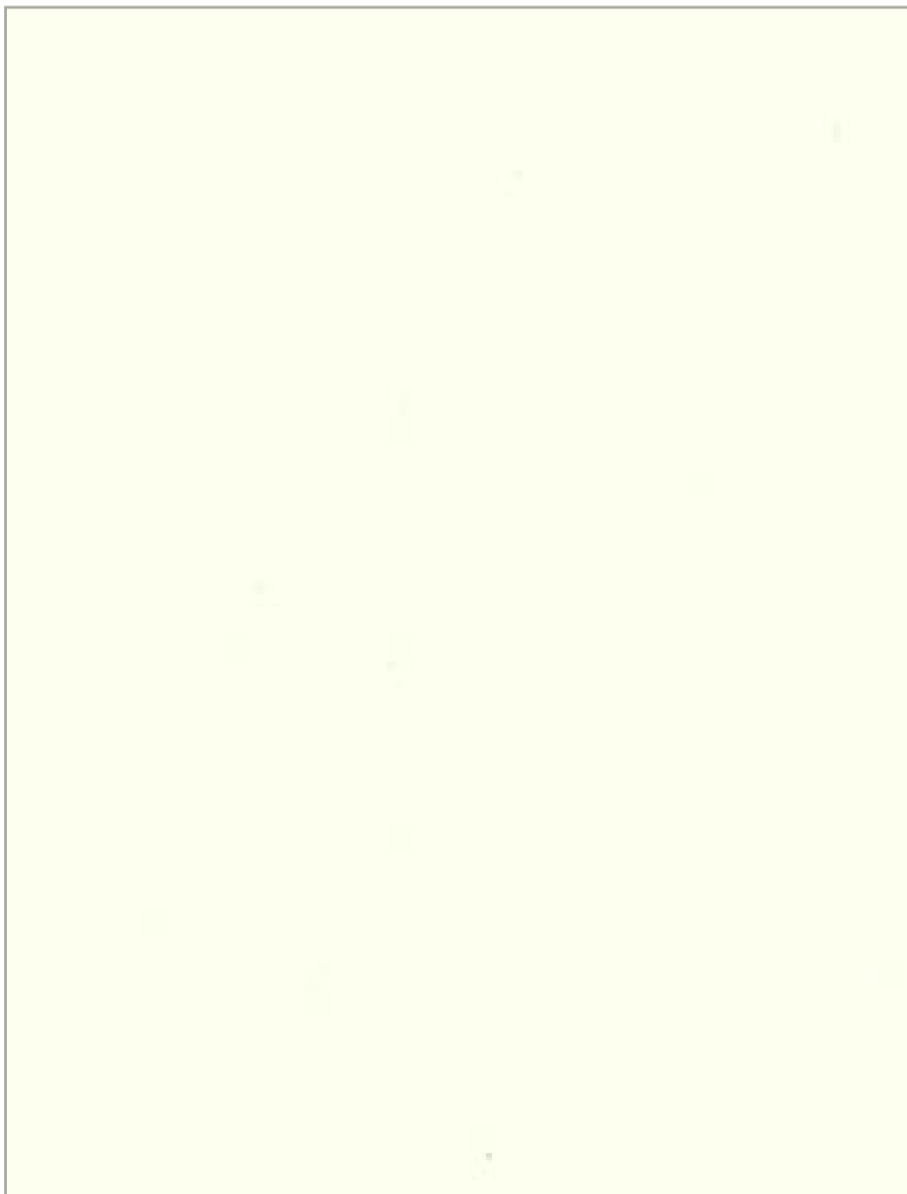
ULTRASOFT CAT. G



SPESSORE_THICKNESS : 1,0 - 1,2 mm
GRANA_GRAIN : grana fine naturale | fine natural grain
COLORE_COLOUR : uniforme | uniform
ASPETTO_SURFACE : opaco | matt
TATTO_TOUCH : liscio | smooth



Pelli lavorate con le migliori tecniche per esaltarne le caratteristiche estetiche e di tatto. Grane naturali e morbide.
Leathers are tanned with the best techniques in order to intensify their look and touch. Natural and smooth grain.



G92134_latte | milk



G92135_avorio | ivory

ULTRASOFT CAT. G



G714_sabbia | sand



G92130_lino | linen



G92131_camoscio | chamois



G92123_segale | rye



G715_castoro | beaver

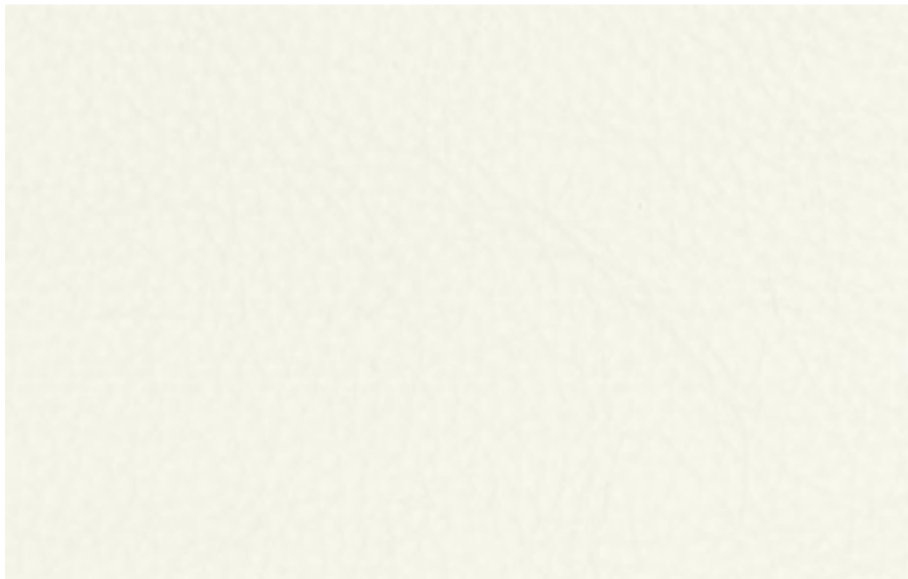
PIUMONE CAT. G



SPESSORE_THICKNESS : 2,0 - 2,2 mm
GRANA_GRAIN : grana grossa naturale | significant natural grain
COLORE_COLOUR : uniforme | uniform
ASPETTO_SURFACE : semi lucido | semi-glossy
TATTO_TOUCH : liscio | smooth



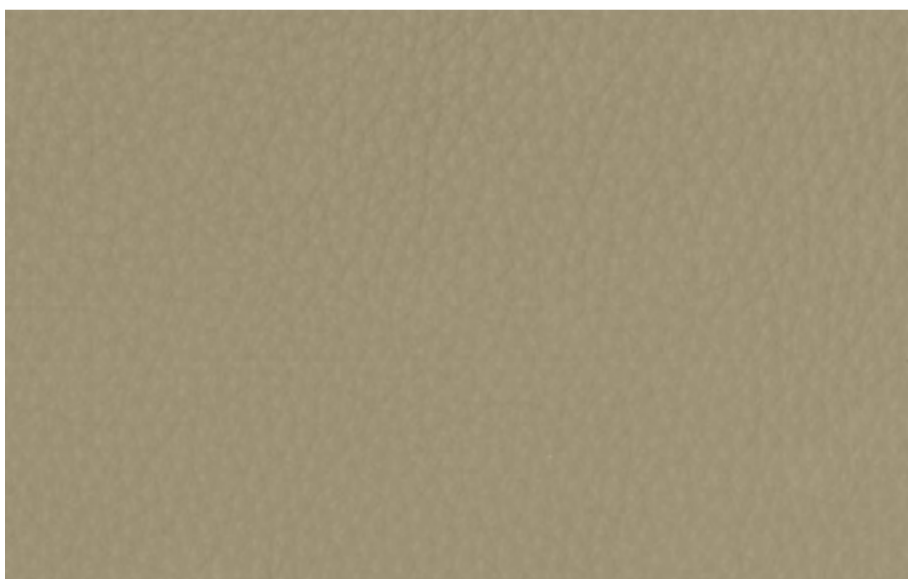
Pelle dall'elevato spessore con un tatto e una mano eccellenti e con caratteristiche di tenuta molto alte.
The softness of the leather but much thicker and stronger with an excellent touch and texture.



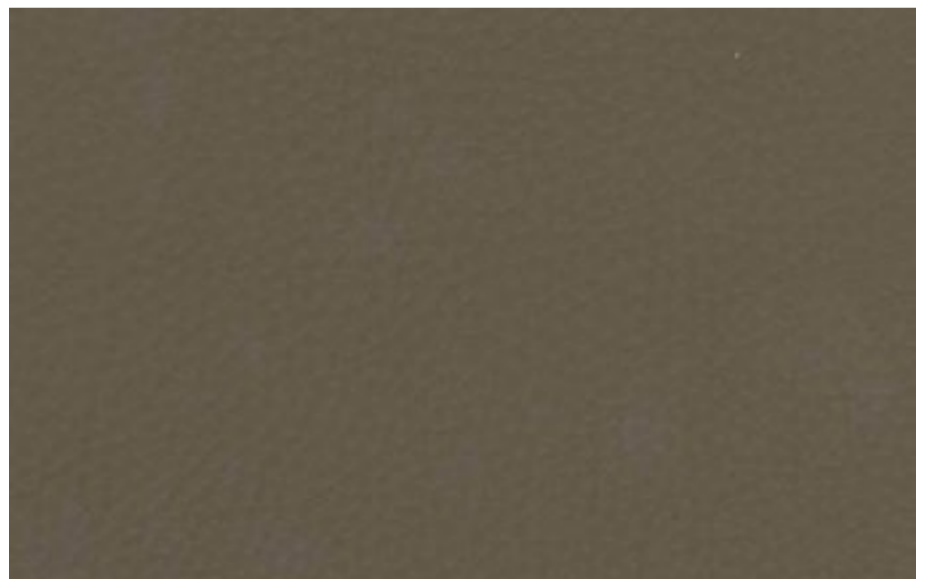
PIUMONE G705_bianco | white



PIUMONE G709_latte | milk



PIUMONE G707_tortora | dove brown



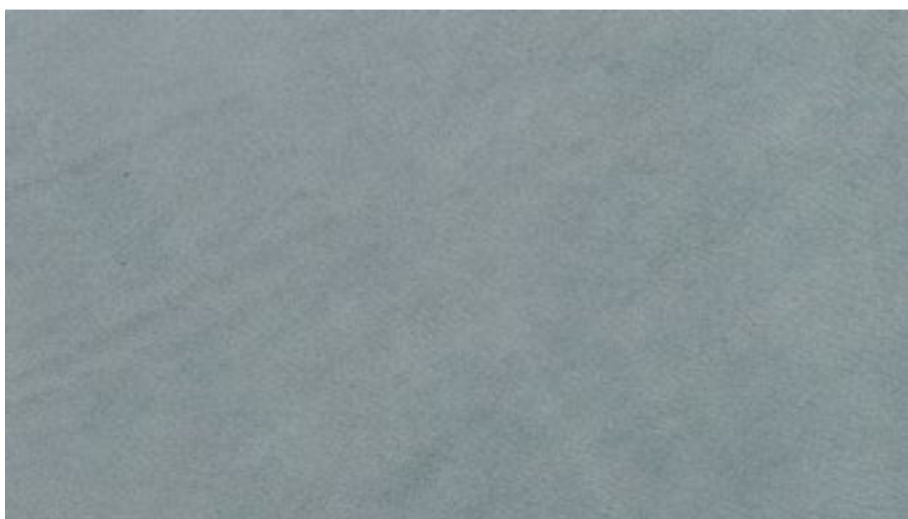
PIUMONE G708_mastice | mastic

TOUCH CAT. LUXE



Particolarità di questa pelle è il tatto morbidissimo.
Peculiarity of this leather is a very soft touch, very appealing.

SPESSORE_THICKNESS : 1,3 - 1,5 mm
GRANA_GRAIN : grana fine naturale | fine natural grain
COLORE_COLOUR: non uniforme | not uniform
ASPETTO_SURFACE : semi-lucido | semi-glossy
TATTO_TOUCH :vellutato | velvety



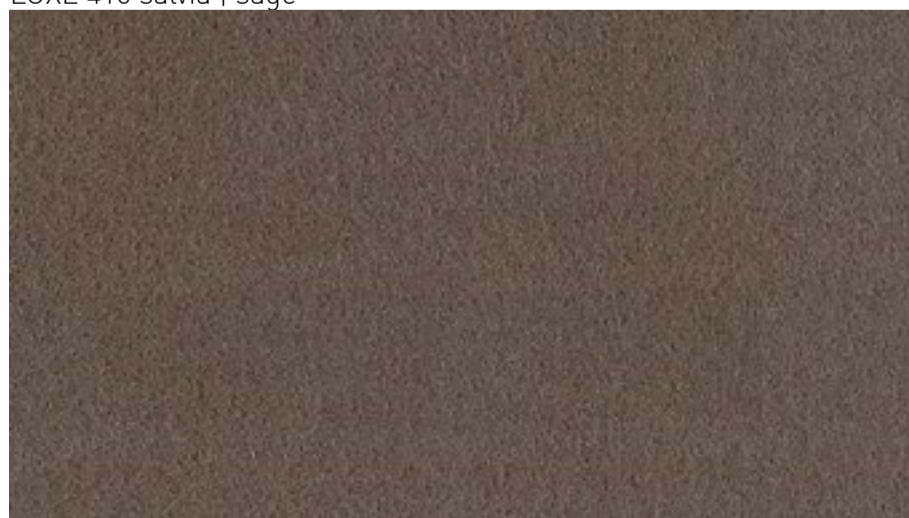
LUXE 420 cielo | sky



LUXE 416 salvia | sage



LUXE 701_cammello | camel



LUXE 417_marmotta | marmot

SKIN CAT. LUXE



Pelli asciugate sottovuoto e tinte con anilina. Particolarità di questo articolo è un aspetto naturale, una mano piena, un tatto vellutato e una leggera scrivenza che ne fanno al momento la massima espressione tecnologicamente raggiungibile per un pellame all'anilina.

Dry vacuum leathers, dyed aniline. Particularity of this article is a natural look, a full hand, a velvety and writing that make these the highest expression technologically achievable for the aniline leather.

SPESSORE_THICKNESS : 1,6 - 1,8 mm
GRANA_GRAIN : grana fine naturale | fine natural grain
COLORE_COLOUR: uniforme | uniform
ASPETTO_SURFACE : opaco | matt
TATTO_TOUCH : vellutato | velvety

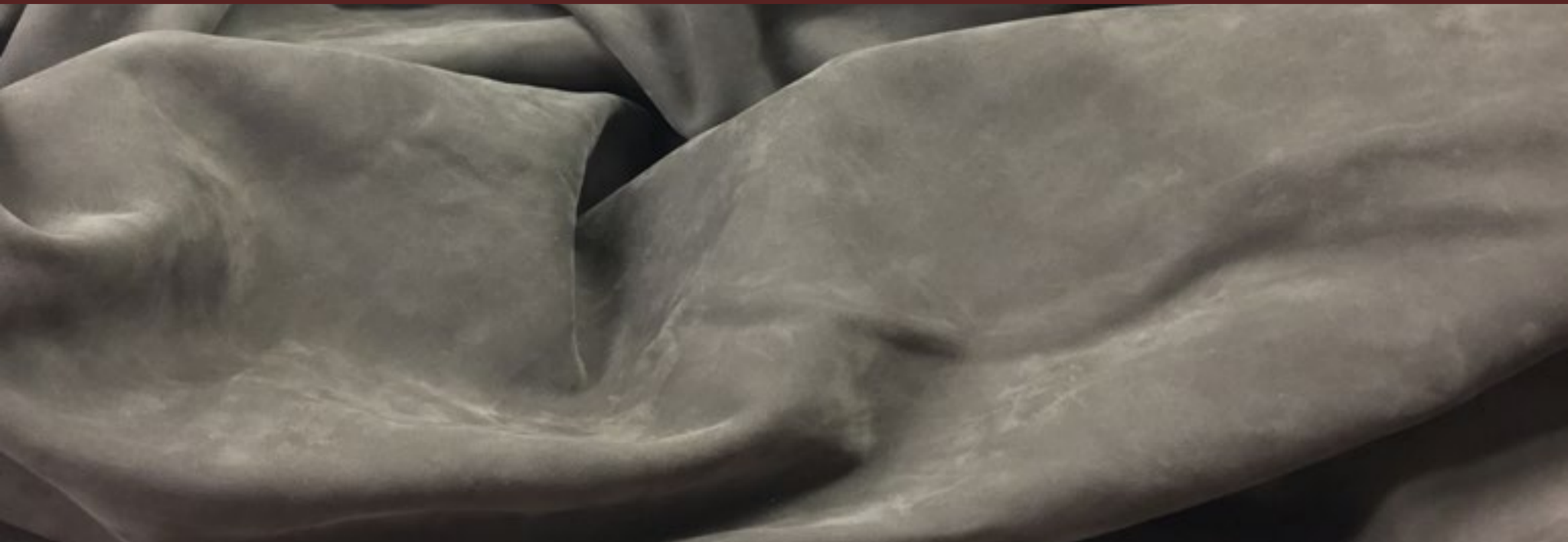


SKIN LUXE 401_crema | cream



SKIN LUXE 400_fango | mud

NABUK | NUBUK CAT. LUXE

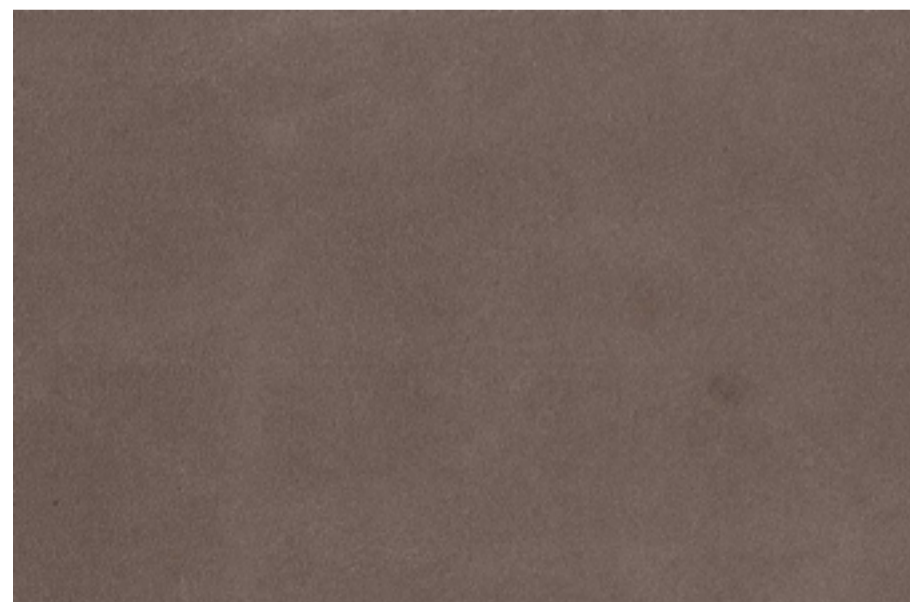


Pelli conciate al cromo, tinte con aniline, asciugate sottovuoto e nabucate, con una mano e un tatto di altissimo pregio.
Chrome-tanned leathers, dyed aniline, dry vacuum and suede finish, with hand and a touch of highest quality.

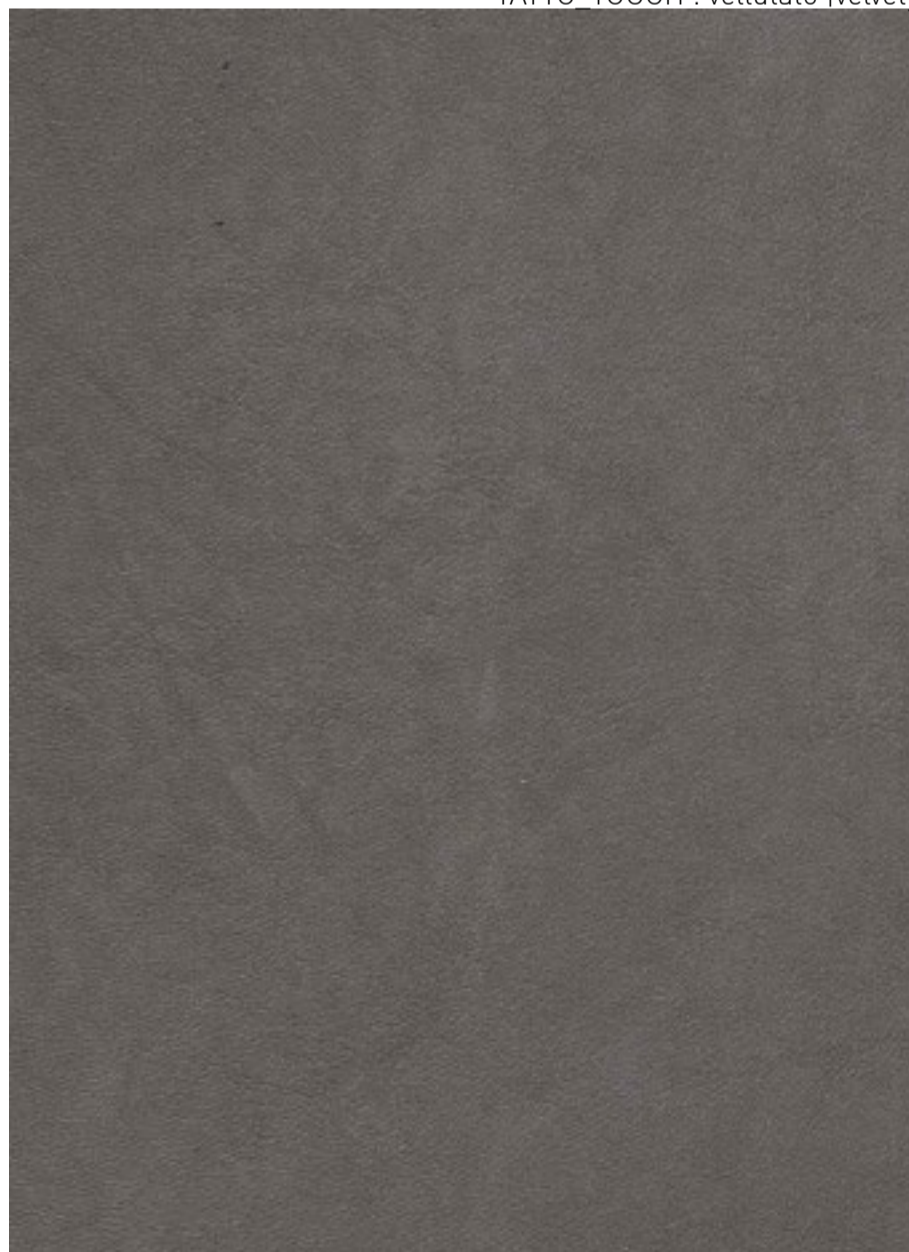
SPESSORE_THICKNESS : 1,3 - 1,5 mm
GRANA_GRAIN : grana fine naturale | fine natural grain
COLORE_COLOUR : uniforme | uniform
ASPETTO_SURFACE : opaco | matt
TATTO_TOUCH : vellutato | velvety



LUXE 412_sabbia | sand



LUXE 419_marrone | brown

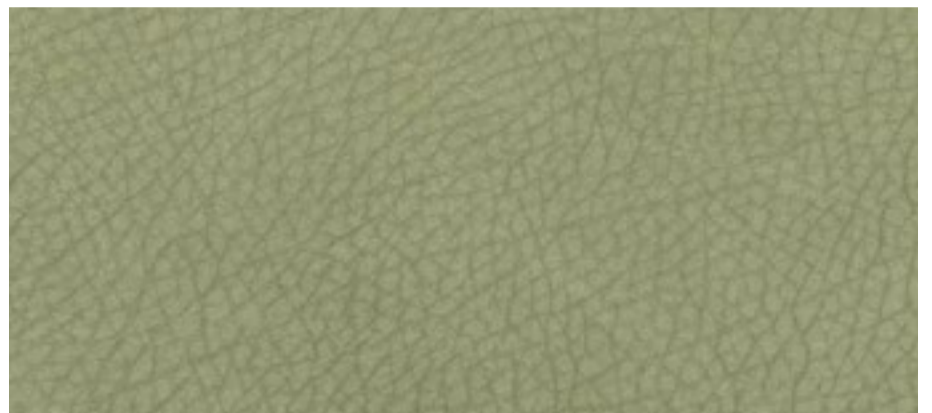


LUXE 421_fumo | smoke

NABUK | NUBUK CAT. F



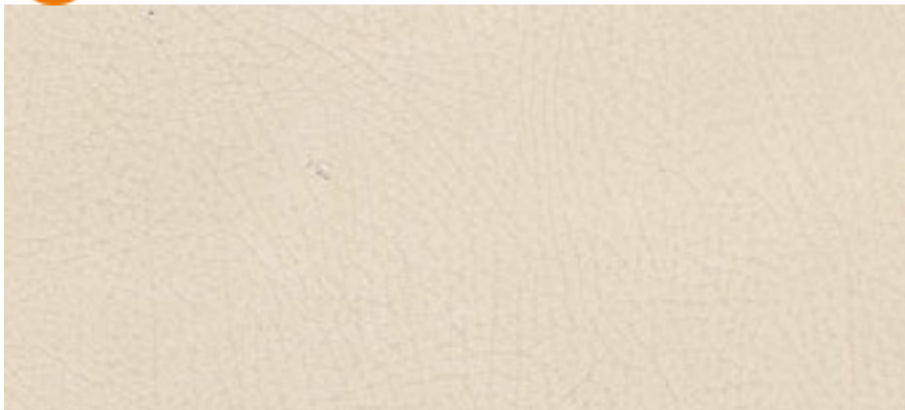
SPESSORE_THICKNESS : 1,4 - 1,6 mm
 GRANA_GRAIN : grana grossa naturale | significant natural grain
 COLORE_COLOUR: uniforme | uniform
 ASPETTO_SURFACE : opaco | matt
 TATTO_TOUCH : vellutato | velvety



NABUK F92211_salvia | sage



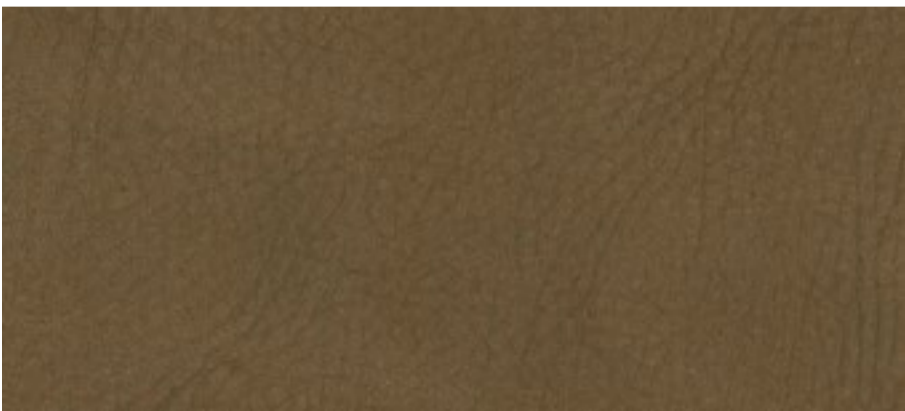
Pelli conciate al cromo, tinte con aniline, asciugate sottovuoto e nabucate, con una mano e un tatto morbidissimo.
 Chrome-tanned leathers, dyed aniline, dry vacuum and suede finish, with a very soft touch.



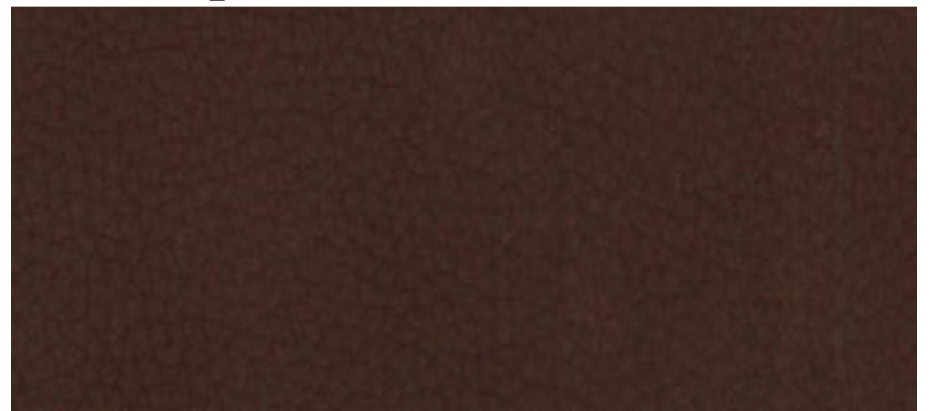
NABUK F92108_sabbia | sand



NABUK F92509_avana | havana



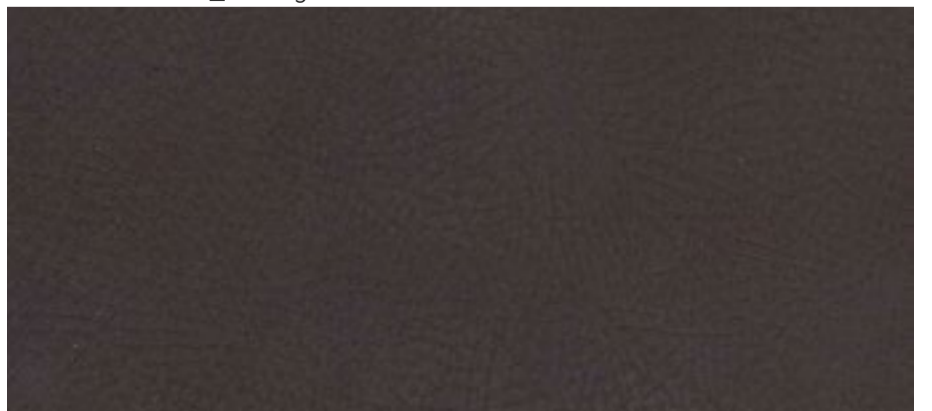
NABUK F92113_marmotta | marmot



NABUK F92109_castagna | chestnut



NABUK F92155_fumo | smoke



NABUK F92513_grigio scuro | dark grey

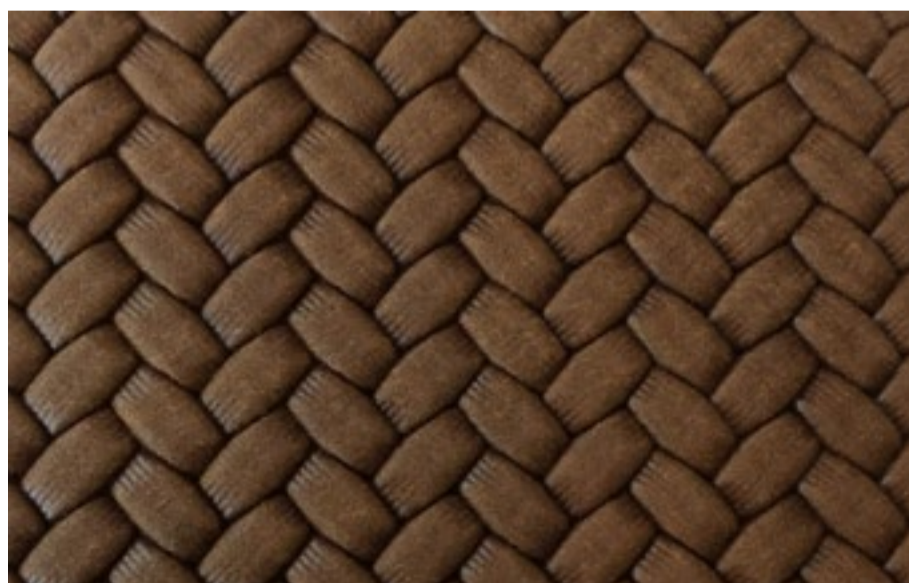
PELLE STAMPATA / PRINTED LEATHER
CAT. LUXE



Luxe 424 siena



Luxe 423 military



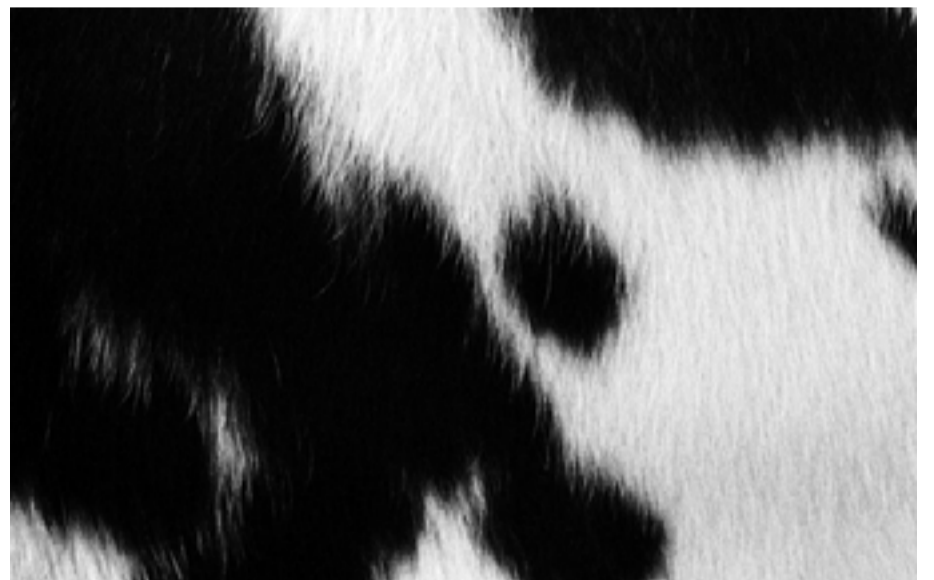
Luxe 425 tabacco

CAVALLINO | COW HIDE CAT. PONY

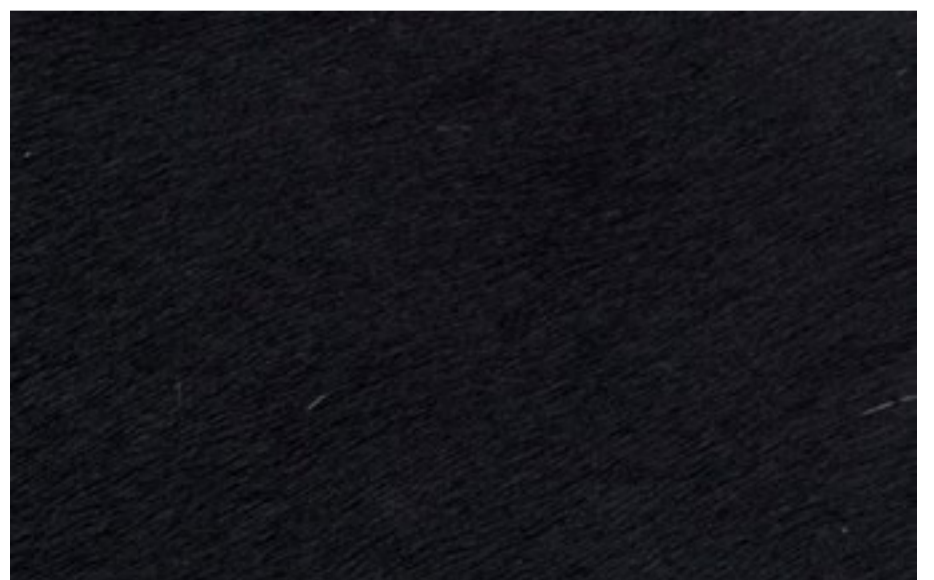
SPESSORE_THICKNESS : 1,8 - 2,0 mm
COLORE_COLOUR: non uniforme | not uniform



PONY_bianco & marrone | white & brown



PONY_bianco & nero | black & white



PONY_nero | black



Il Pony è pelle di origine bovina accuratamente selezionata per omogeneità di maculatura e peluria, i manti garantiscono un equilibrio armonico del rivestimento. Le varieguate dimensioni delle macchie rendono ogni oggetto rivestito differente dall'altro e quindi unico. Il Pony non è sottoposto ad alcun trattamento, in modo da conservare intatta la sua naturale bellezza. Cavallino (Pony Skin) is a cow hide leather selected for the consistency of their maculations and hair, the coats are a guarantee of finely balanced upholstery. The different sizes of the spots ensure that every upholstered item is totally unique and original. In order to maintain its natural beauty intact, Cavallino leather is not subject to any kind of treatment.

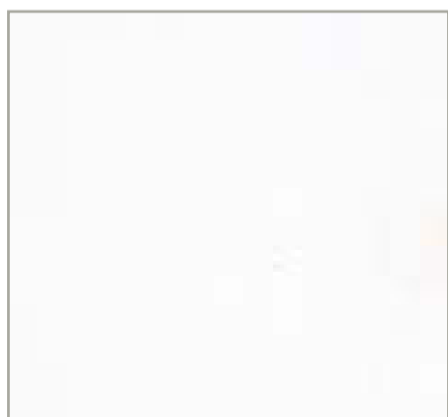
CUOIO | HIDE



C28_fango | mud



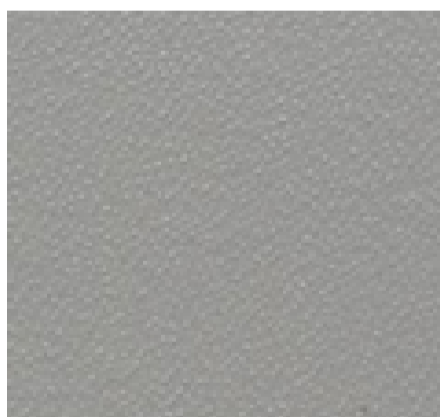
C32_caffè | coffee



C10_bianco | white



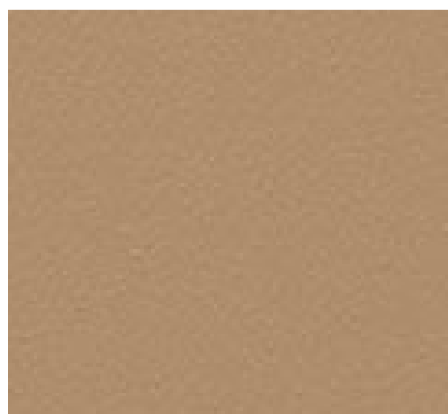
C23_avorio | ivory



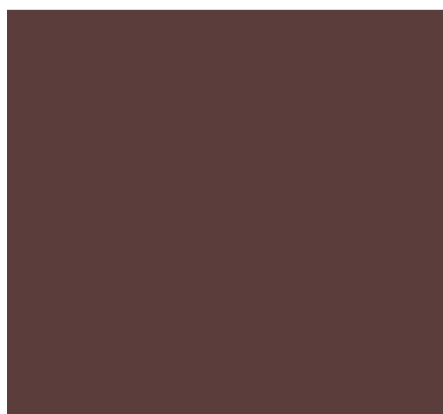
C01_argento | silver



C17_sabbia | sand



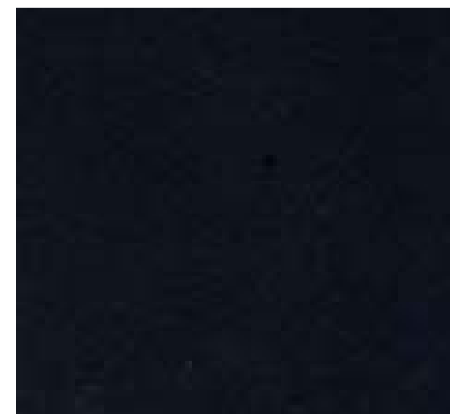
C16_naturale | natural



C 115_cognac



C11_testa di moro | dark brown



C09_nero | black

PULIZIA E MANUTENZIONE

Pelle

Per mantenere intatto nel tempo il rivestimento in pelle possono essere effettuate regolarmente delle operazioni di pulizia e manutenzione. Pulire regolarmente con acqua e sapone neutro e stendere in maniera uniforme su tutta la superficie in pelle della crema nutriente, in quanto la crema satura la pelle ritardando l'assorbimento delle macchie. Non usare stracci in microfibra perché rimuovono il grasso e possono danneggiare la pelle. Consigliamo di usare la crema nutriente una o due volte all'anno (ogni volta che la pelle risulta secca). Per rimuovere eventuali macchie usare un fazzoletto di carta o un panno di cotone. Non strofinare. Premere un panno contro la macchia per assorbire il grasso ed usare un detergente delicato sciolto nell'acqua per rimuovere eventuali aloni.

Pelle cerata

Per rimuovere eventuali macchie dalla pelle cerata usare un panno pulito imbevuto di una soluzione di acqua al 90% e sapone neutro non colorato al 10%. Strofinare delicatamente e asciugare con un altro panno morbido asciutto e pulito.

Pelle nabuk

Spolverare periodicamente con un panno bianco pulito, asciutto e non abrasivo. In caso di macchie da sostanze solubili in acqua (bibite, caffè, tè, latte, marmellata): rimuovere rapidamente il liquido dalla superficie tamponando con un panno bianco (o carta assorbente) non abrasivo. Successivamente con un panno pulito imbevuto d'acqua, strofinare delicatamente dall'esterno verso l'interno della macchia. Asciugare immediatamente con un panno pulito. Non inzuppare la superficie della pelle ed asciugare immediatamente con un panno asciutto.

Cavallino

Per mantenere il pelo pulito, spazzolarlo di tanto in tanto con una spazzola morbida nel senso del pelo. Per rimuovere eventuali macchie usare un panno di cotone imbevuto in acqua e sapone neutro e strofinare delicatamente sempre nel senso del pelo, tamponare poi con panno assorbente.

MAINTENANCE AND CARE

Leather

In order to maintain the inherent features of leather upholstery regular cleaning and care treatments are necessary. Clean regularly with water and neutral soap and then apply a coating of nourishing cream on the entire surface of the same, as the cream acts to saturate the leather and delays any stain absorption. Do not use micro-fibre cloths as they may remove the grease and damage the leather itself. We recommend to use nourishing cream once or twice a year (or whenever the leather appears to be dry). To remove any stains use a paper tissue or cotton cloth. Do not rub. Press the cloth against the stain to absorb the greasy and use a delicate detergent dissolved in water to remove any rings.

Waxed Leather

To remove stains from waxed leather use a clean cloth soaked with a solution of 90% water and 10% transparent neutral soap. Rub gently and dry with a soft dry cloth.

Nabuk leather

Dust down occasionally using a clean white cloth, that must be dry and non-abrasive. In the event of stains caused by water soluble substances (beverages, coffee, tea, milk, jam); rapidly remove the liquid from the surface mopping up with a white cloth soaked in water, rub gently from outside to the inside using a clean cloth. Do not soak the leather surface and dry immediately with a dry cloth.

Pony hide

To keep the hide clean, brush occasionally using a soft brush in the direction of the hide hair. To remove any stains use a cotton cloth soaked in water with a neutral soap and rub gently always in the sense of the hide hair and then mop with an absorbent cloth.

TESSUTI
FABRICS



Alivar ha scelto di compiere un passo avanti nel rispetto dello sviluppo sostenibile selezionando per i propri clienti un'ampia scelta di prodotti a basso impatto ambientale. Nella vasta gamma dei tessuti sono stati inseriti cotoni naturali, cotoni ecologici ed ecopelli.

Alivar has chosen to take a step forward in respect of sustainable development, selecting for its clients a wide range of products with low environmental impact. Natural cottons, ecological fibers and eco-leathers have been included in Alivar's wide range of fabrics.

- LIGHT
- BEIGE
- CHOCOLATE
- GREEN
- COLOURS
- PELTROX
- VELVET

ALIVAR

LIGHT



LIGHT



CAT. B 3153 (72% VI - 28% LI)



CAT. C 2270 (38% PC - 36% VI - 15% CO - 9% LI - 2% AF)



CAT. C 2385 (85% PES - 15% CO)



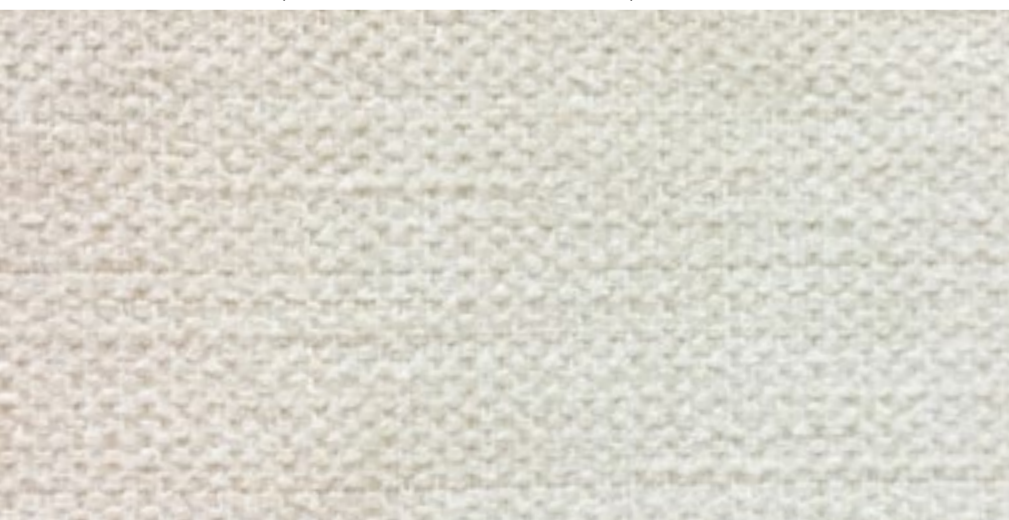
CAT. C 2341 (49% LI - 32% CO - 19% VI)



CAT. C 2316 (59% VI - 33% CO - 8% LI)



CAT. D 5073 (53% VI - 33% CO - 14% LI)



CAT. D 5067 (46% CO - 45% VI - 9% LI)

LIGHT



CAT. D 5099 (52% LI - 48% VI)



CAT. D 5168 (64% VI - 15% PL - 11% CO - 10% LI)



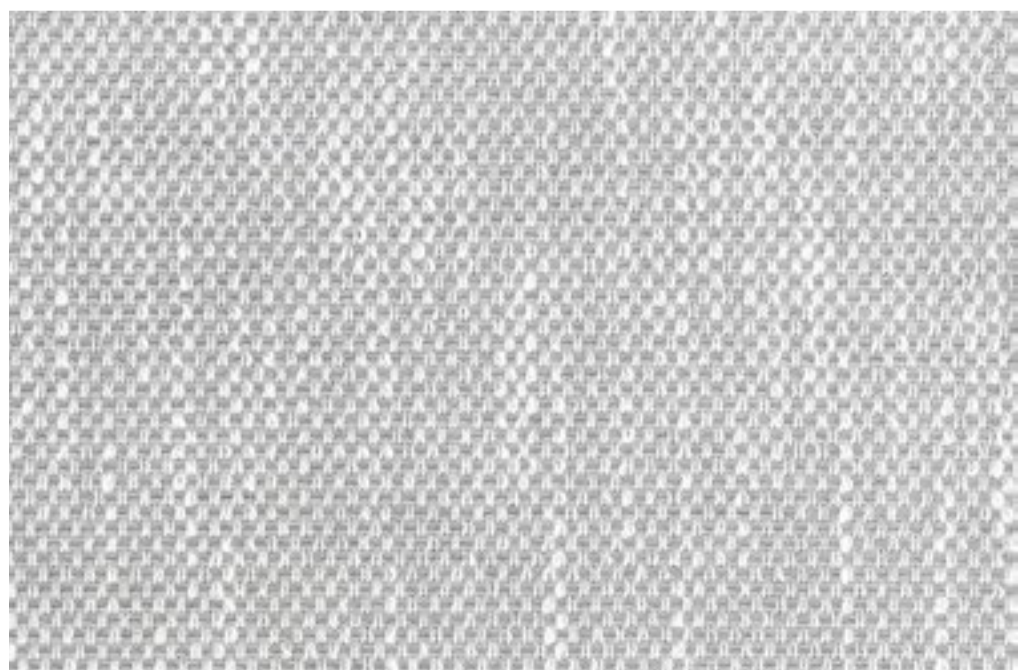
CAT. D 5186 (40% VI - 29% CO - 14%PC - 10% LI - 6% PL)



CAT. D 5220 (70% VI - 30% LI)



CAT. D 5188 (60% LI - 40% CO)



CAT. D 5197 (30% VI - 20% PL - 20% AC - 15% CO - 15% LI)

ALIVAR

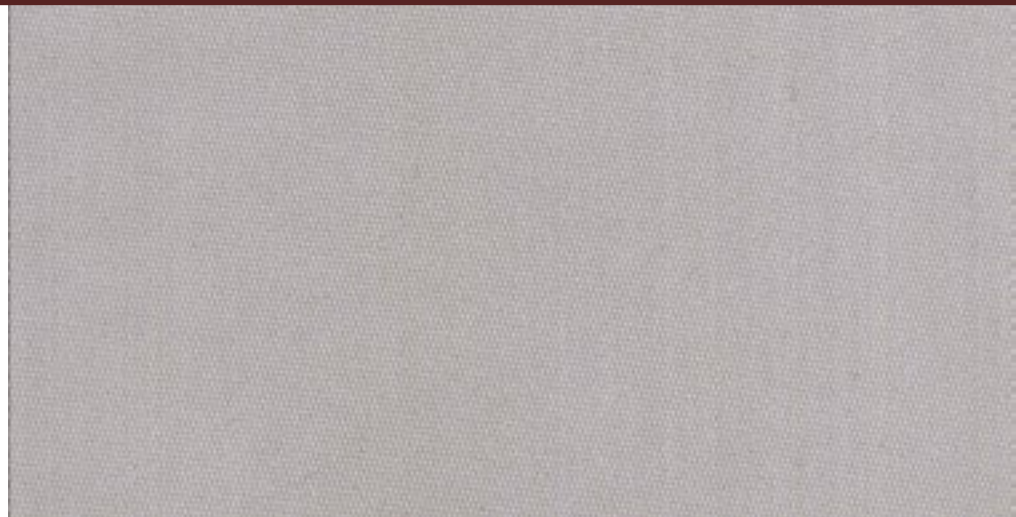
BEIGE



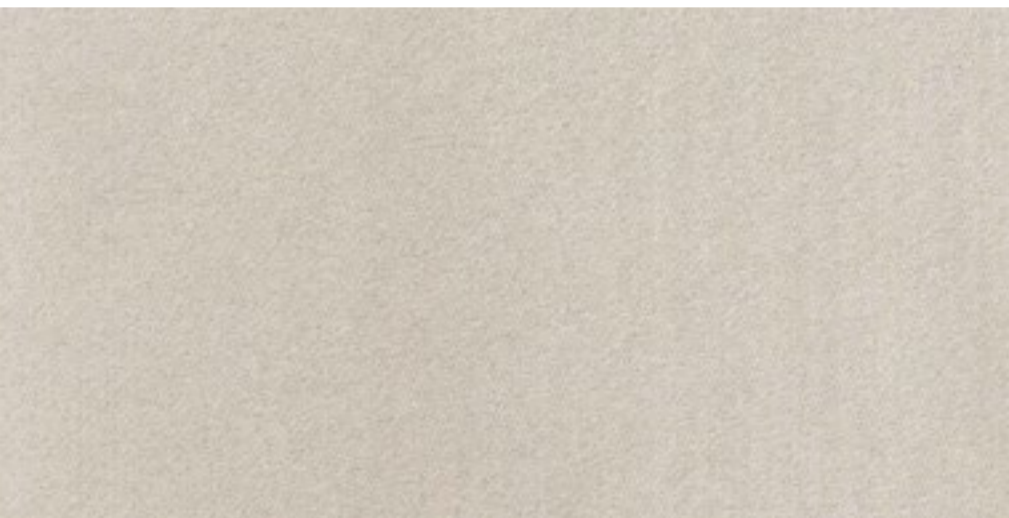
BEIGE



CAT. A 4010 (100% PL)



CAT. A 4018 (91% CO - 9% PL)



CAT. B 3160 (90% CO - 10% PL)



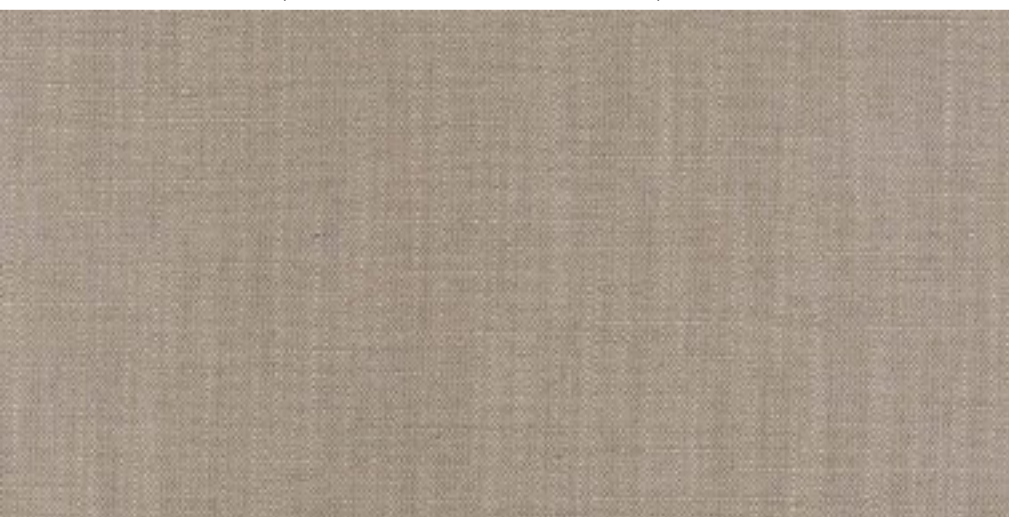
CAT. B 3154 (72% VI - 28% LI)



CAT. B 3188 (71% CO - 21% PL - 8% PC)



CAT. B 3155 (54% VI - 24% CO - 22% LI)



CAT. B 3159 (72% VI - 28% LI)

BEIGE



CAT. C 2386 (85% PES - 15% CO)



CAT. C 2315 (59% VI - 33% CO - 8% LI)



CAT. C 2342 (68% CO - 32% LI)



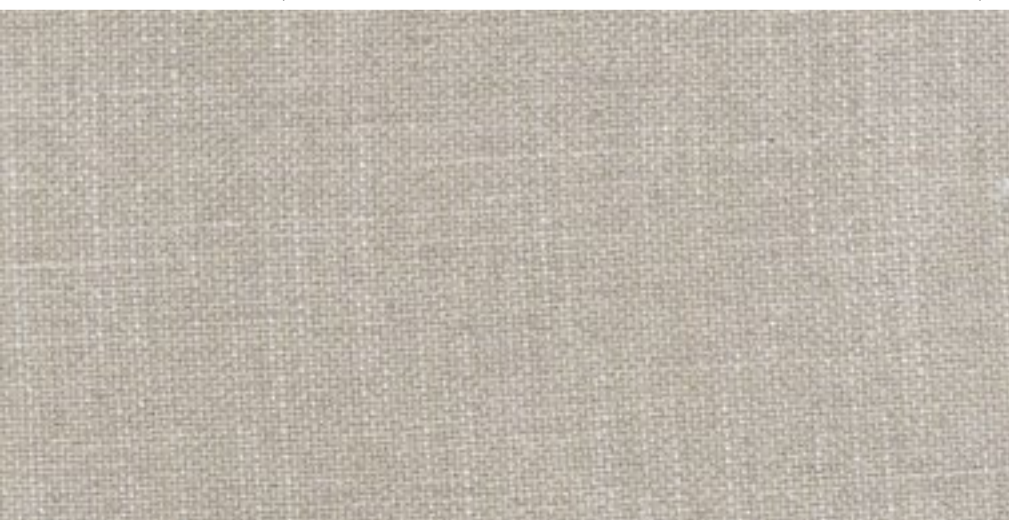
CAT. C 2317 (59% VI - 33% CO - 8% LI)



CAT. C 2344 (44% VI-16% PL-11% LI-10% WO-9% CO-6% PA-4%SE)



CAT. C 2339 (67% VI - 33% LI)



CAT. C 2345 (49% LI - 32% CO - 19% VI)

BEIGE



CAT. C 2343 (44% VI-16% PL-11% LI-10% WO-9% CO-6% PA-4% SE)



CAT. C 2402 (100% POL)



CAT. D 5100 (52% LI - 48% VI)



CAT. D 5068 (46% CO - 45% VI - 9% LI)



CAT. D 5221 (75% VI - 14% CO - 11% LI)



CAT. D 5169 (64% VI - 15% PL - 11% CO - 10% LI)



CAT. D 5205 (87% CO - 13% VI)

BEIGE



CAT. D 5071 (46% CO - 45% VI - 9% LI)



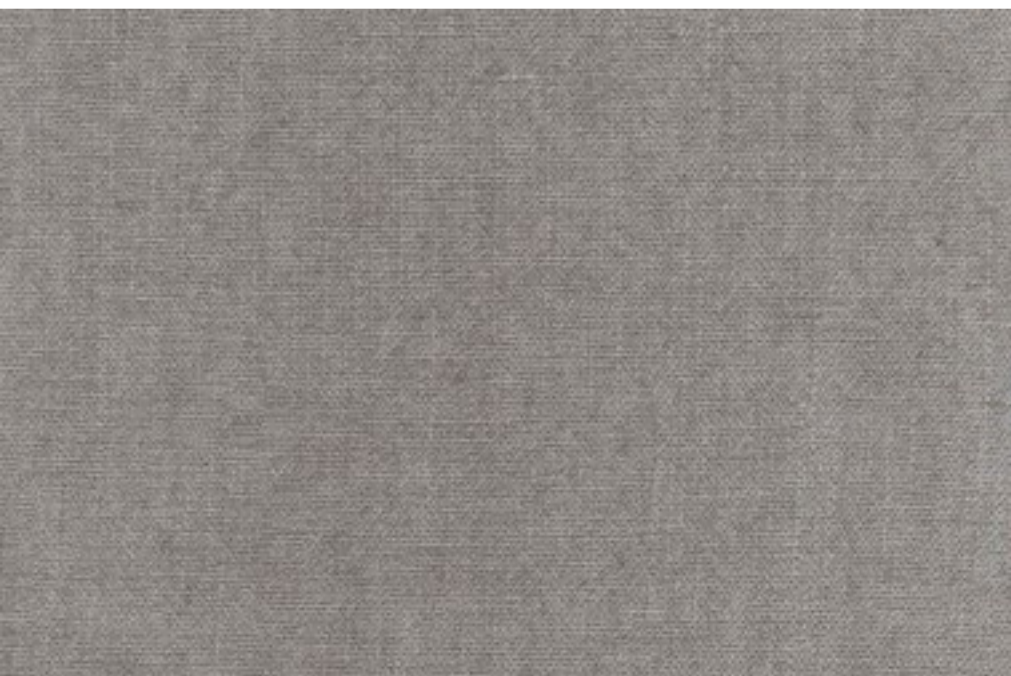
CAT. D 5170 (60% CO - 40% LI)



CAT. D 5222 (33% LI - 33% VI - 16% CO - 12% MD - 6% PL)



CAT. D 5101 (52% LI - 48% VI)



CAT. D 5117 (52% LI - 48% VI)



CAT. D 5172 (40% VI - 29% CO - 14% PC - 10% LI - 6% PL)

ALIVAR

CHOCOLATE



CHOCOLATE



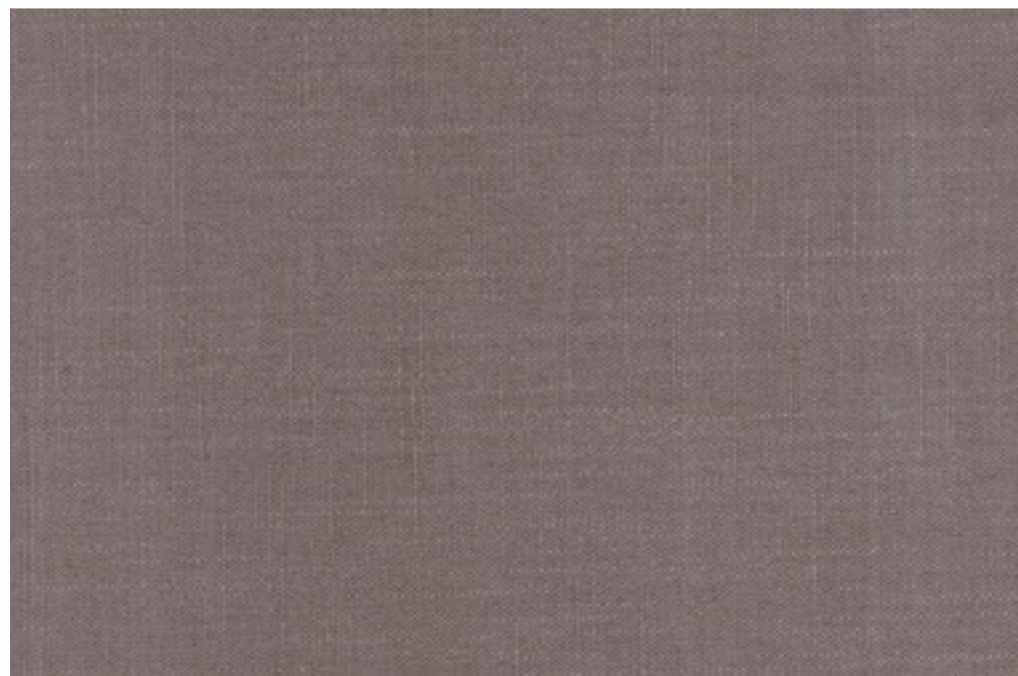
CAT. A 4017 (91% CO - 9% PL)



CAT. B 3162 (38% VI - 36% CO - 16% LI - 10 % PL)



CAT. B 3173 (90% CO - 10% PL)



CAT. B 3164 (72% VI - 28% LI)

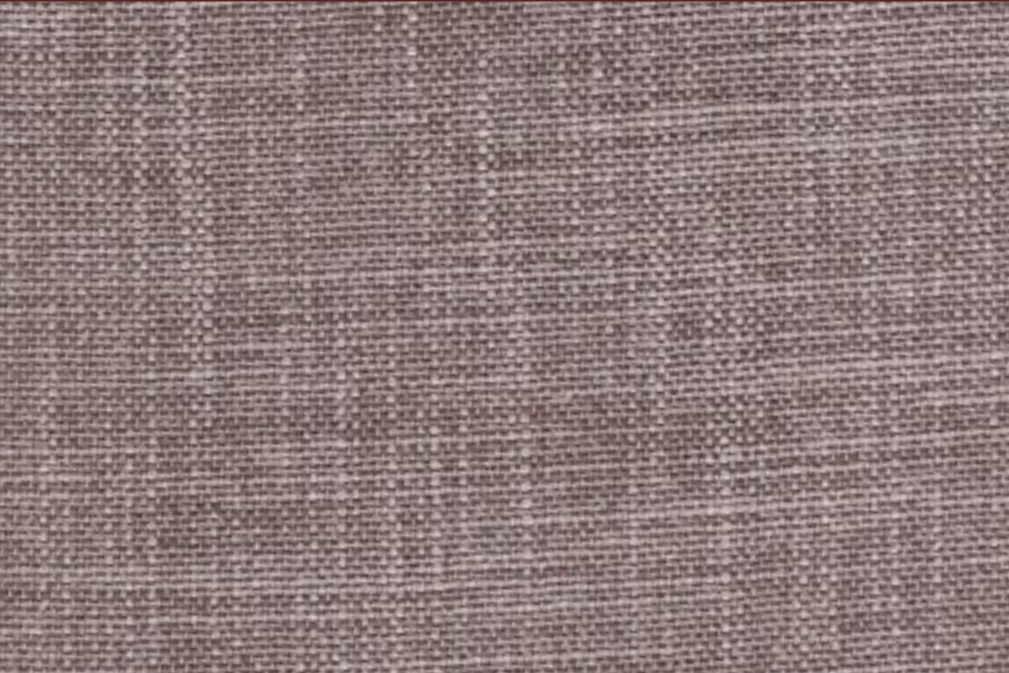


CAT. B 3166 (75% CO - 25% PL)

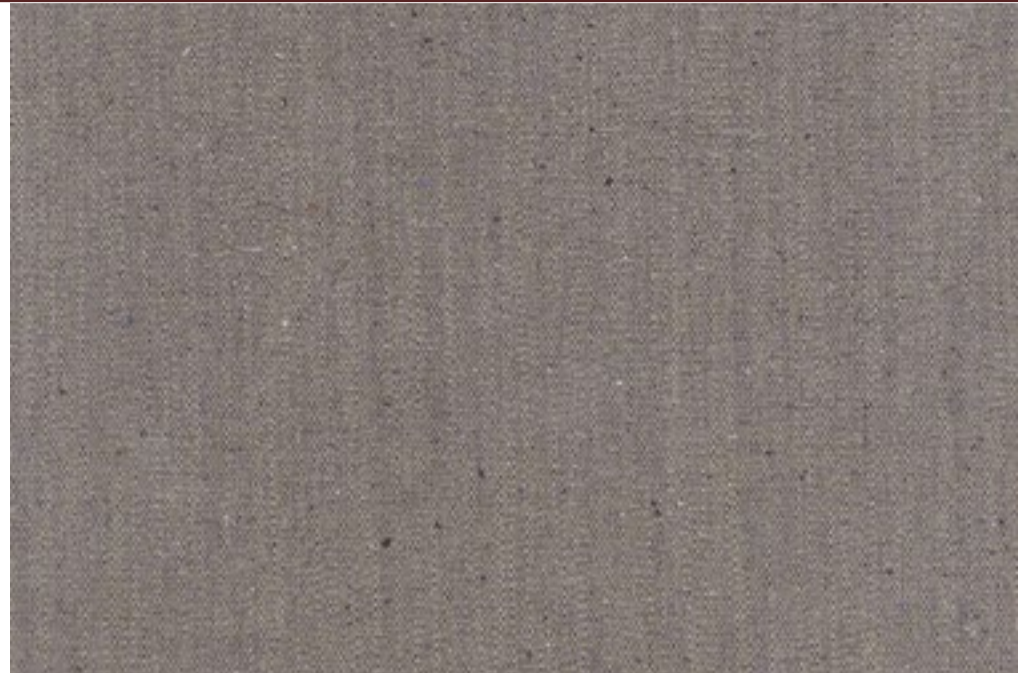


CAT. C 2387 (85% PES - 15% CO)

CHOCOLATE



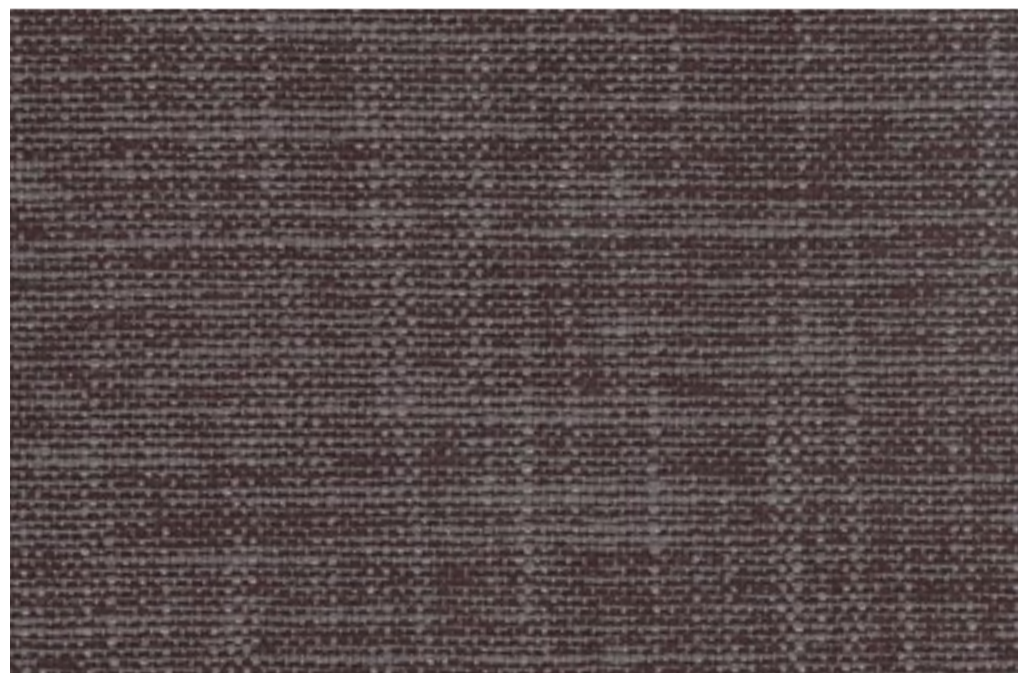
CAT. C 2319 (59% VI - 33% CO - 8% LI)



CAT. C 2346 (44% VI-16% PL-11% LI-10% WO-9% CO-6%PA-4%SE)



CAT. C 2347 (68% CO - 32% LI)



CAT. C 2320 (59% VI - 33% CO - 8% LI)



CAT. D 5196 (30% VI - 20% PL - 20% AC - 15% CO - 15% LI)



CAT. D 5181 (60% CO - 40% LI)

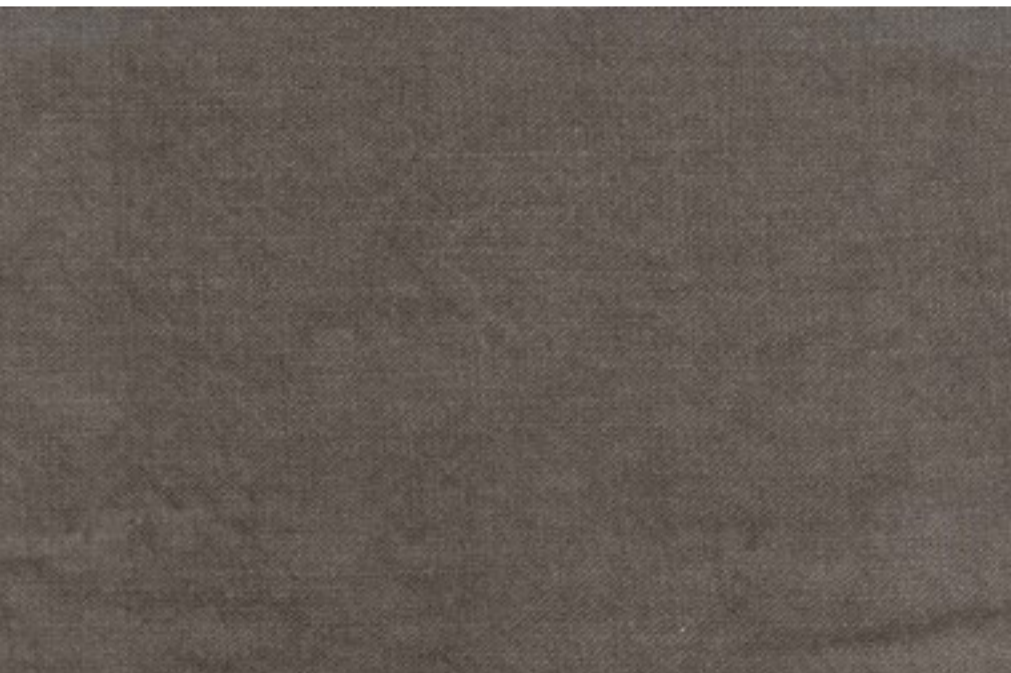
CHOCOLATE



CAT. D 5223 (70% VI - 30% LI)



CAT. D 5199 (39% LI - 27% JU - 24% VI - 10% CO)



CAT. D 5102 (52% LI - 48% VI)



CAT. D 5198 (39% LI - 27% JU - 24% VI - 10% CO)



CAT. D 5174 (60% LI - 40% CO)

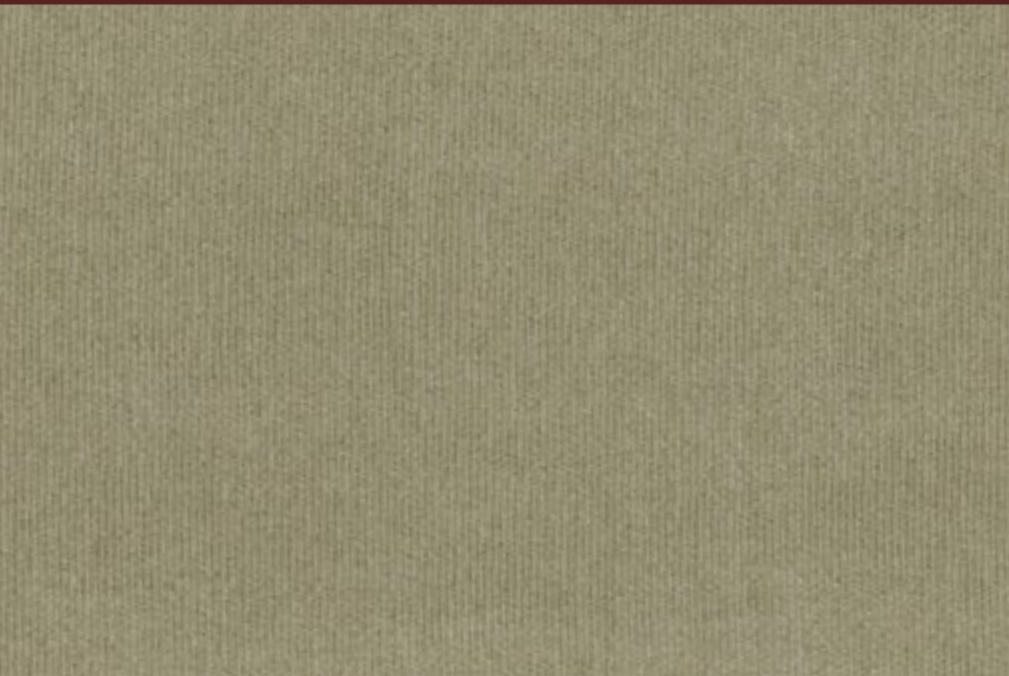


CAT. D 5224 (33% LI - 33% VI - 16% CO - 12% MD - 6% PL)

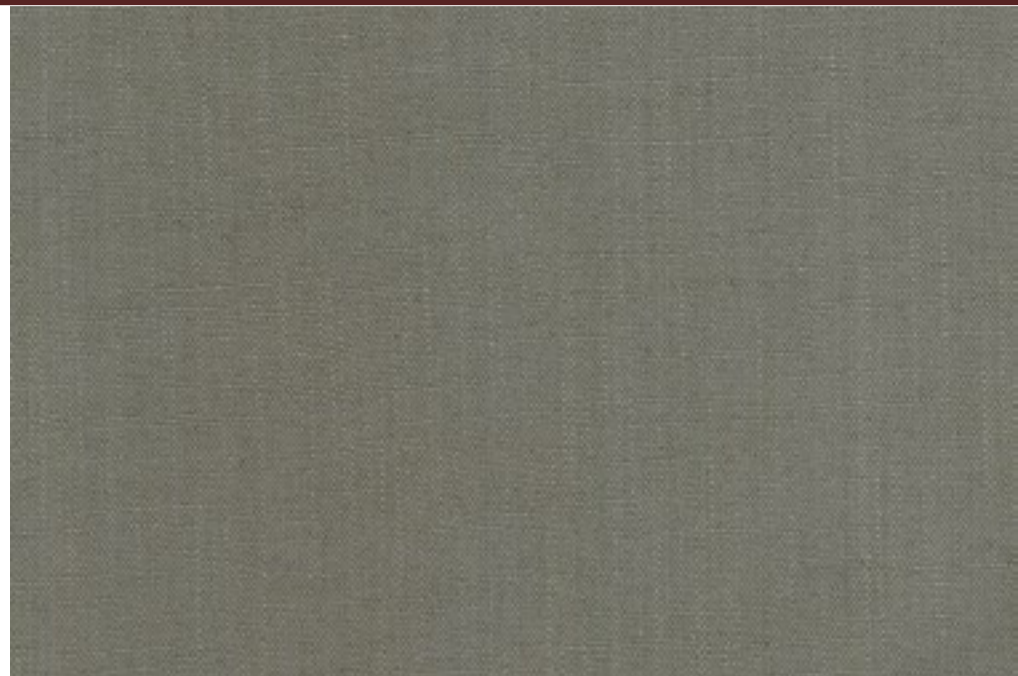
GREEN



GREEN



CAT. B 3180 (71% CO - 21% PL - 8% PC)



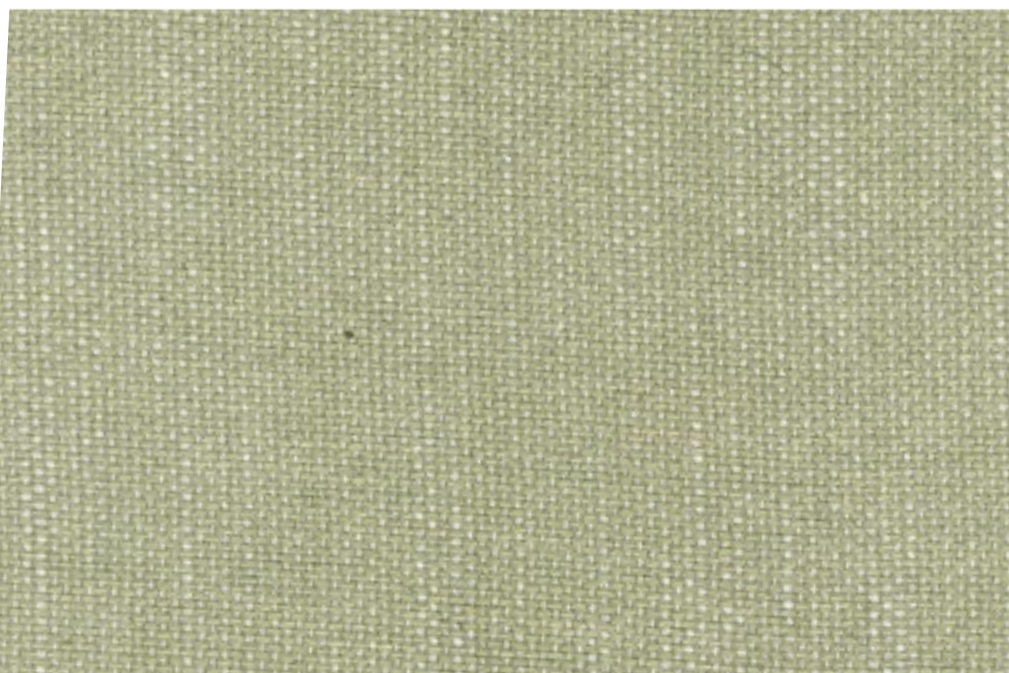
CAT. B 3170 (72% VI - 28% LI)



CAT. B 3167 (54% VI - 24% CO - 22% LI)



CAT. C 2348 (49% LI - 32% CO - 19% VI)



CAT. C 2349 (49% LI - 32% CO - 19% VI)



CAT. C 2362 (67% VI - 33% LI)

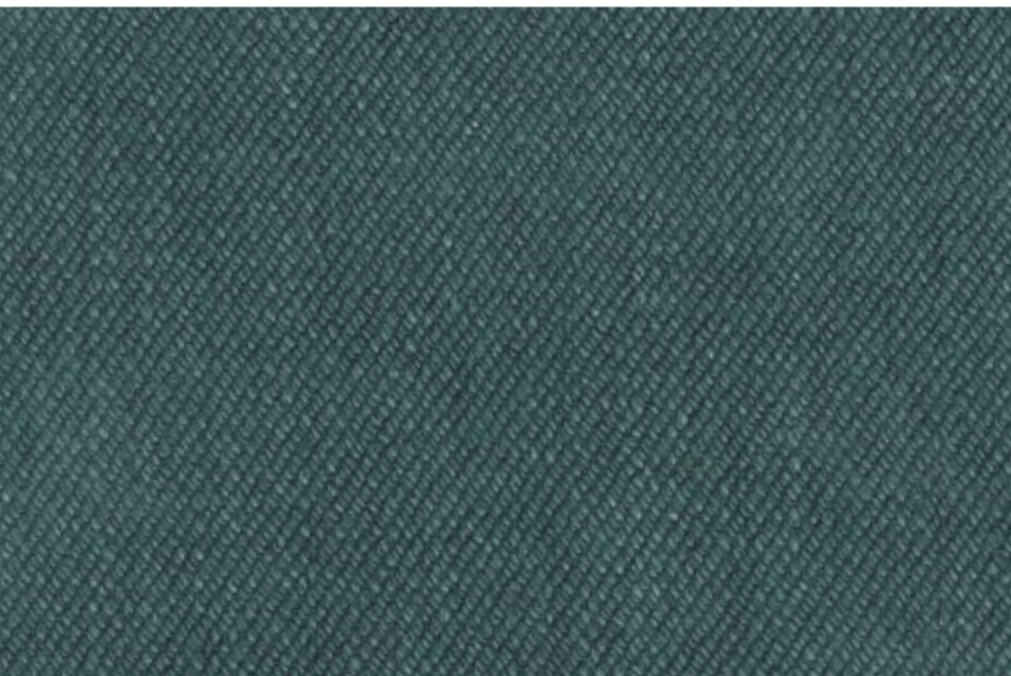
GREEN



CAT. D 5226 (100% LI)



CAT. D 5225 (100% LI)



CAT. D 5178 (60% LI - 40% CO)

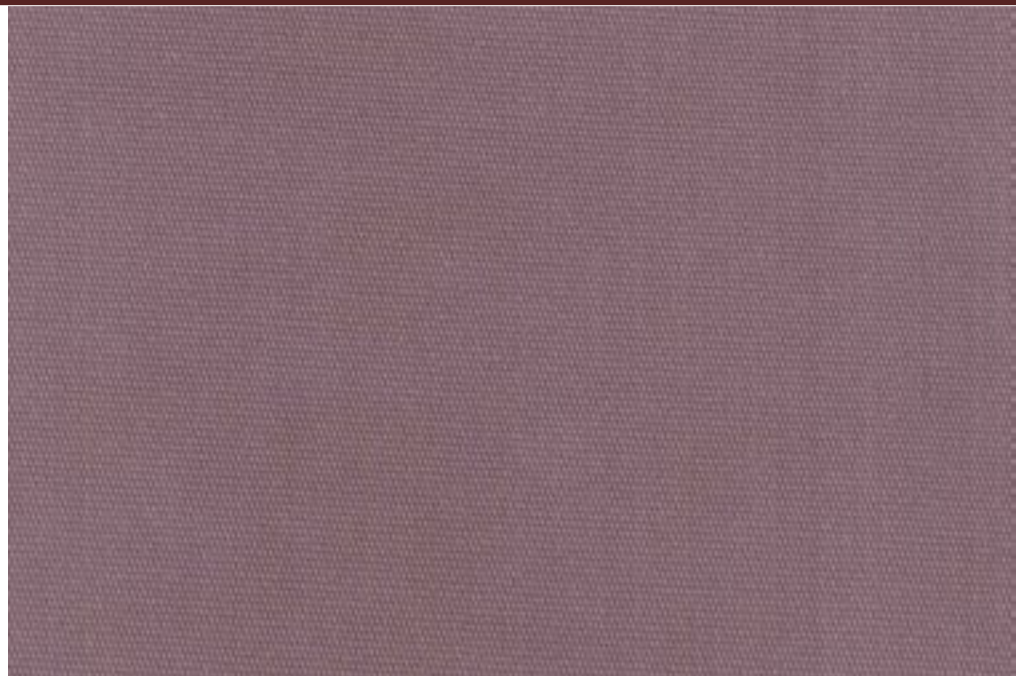
COLOURS



COLOURS



CAT. A 4025 (91% CO - 9% PL)



CAT. A 4024 (91% CO - 9% PL)



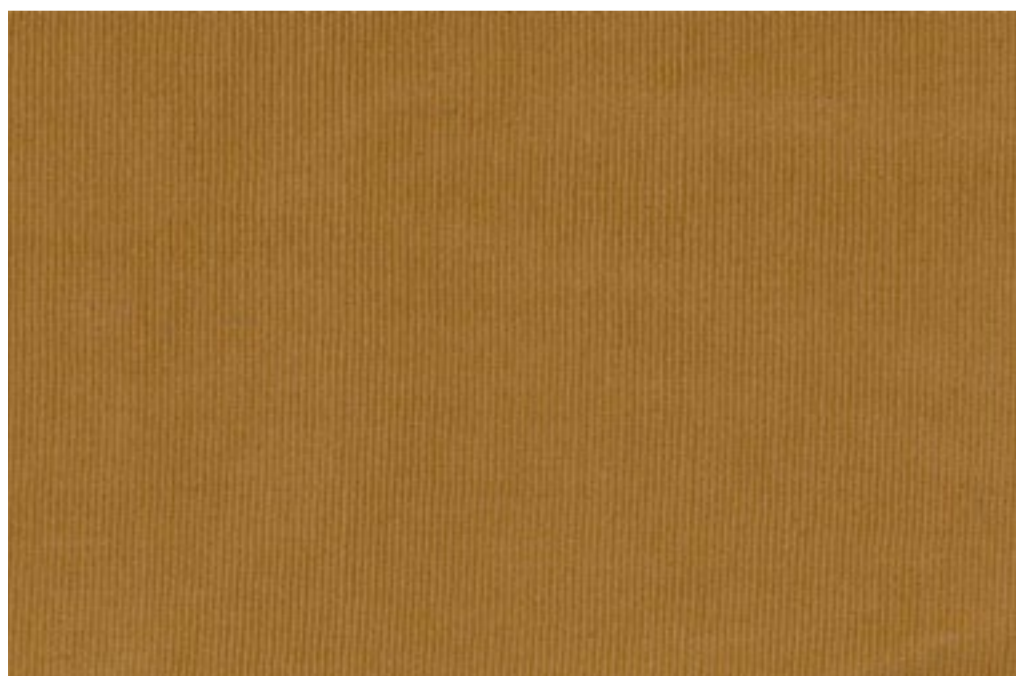
CAT. A 4023 (91% CO - 9% PL)



CAT. B 3183 (71% CO - 21% PL - 8% PC)



CAT. B 3185 (71% CO - 21% PL - 8% PC)



CAT. B 3184 (71% CO - 21% PL - 8% PC)

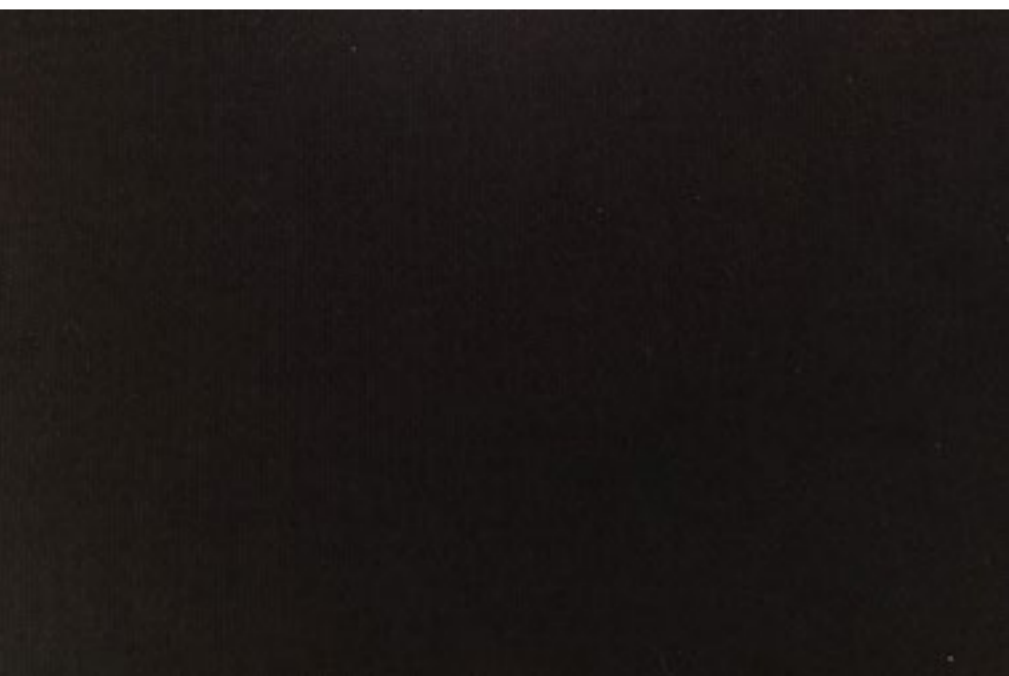
COLOURS



CAT. B 3080 (71% CO - 21% PL - 8% PC)



CAT. B 3182 (71% CO - 21% PL - 8% PC)



CAT. B 3083 (71% CO - 21% PL - 8% PC)



CAT. C 2363 (67% VI - 33% LI)



CAT. C 2361 (68% CO - 32% LI)



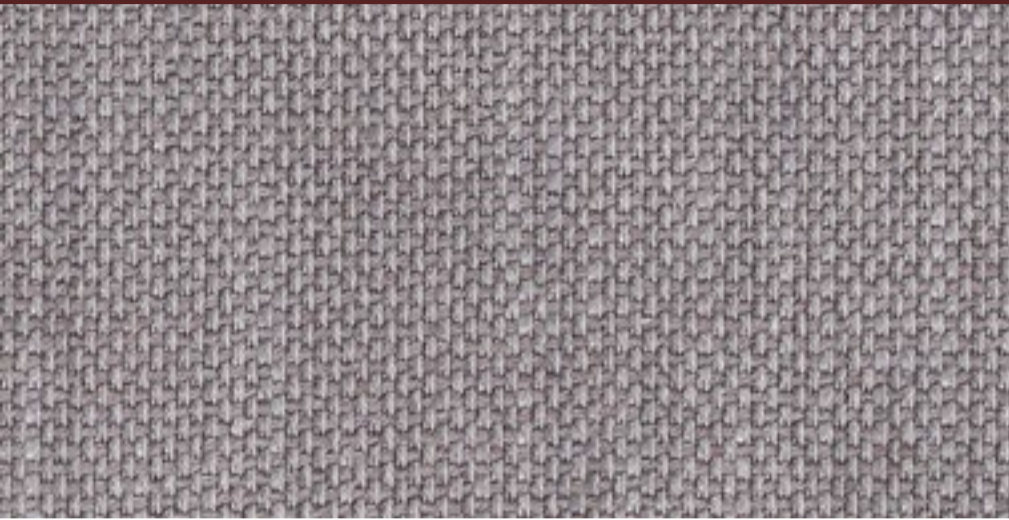
CAT. D 5167 (60% LI - 40% CO)

ALIVAR

PELTROX



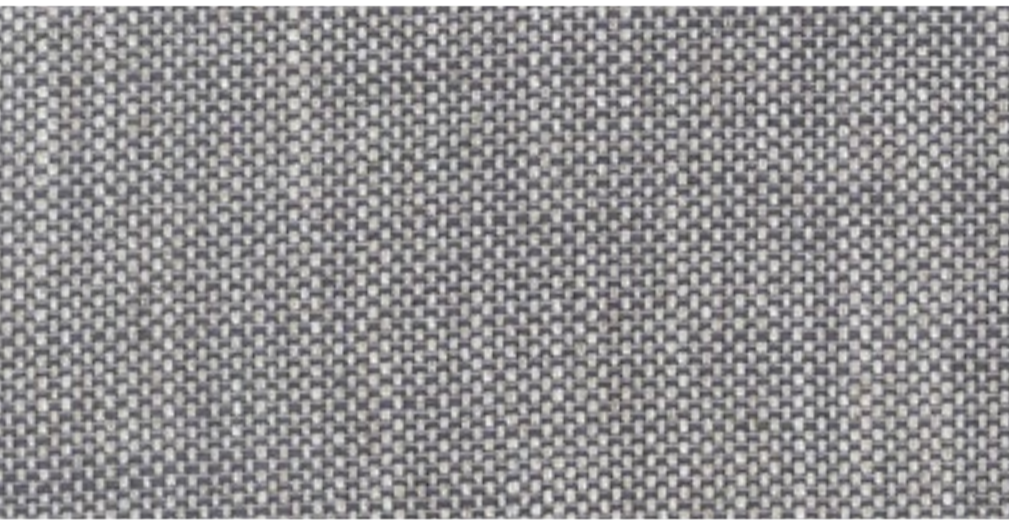
PELTROX



CAT. A 4016 (47% VI - 35% PL - 18% CO)



CAT. A 4012 (100% PL)



CAT. B 3171 (54% VI - 24% CO - 22% LI)



CAT. C 2388 (85% PES - 15% CO)



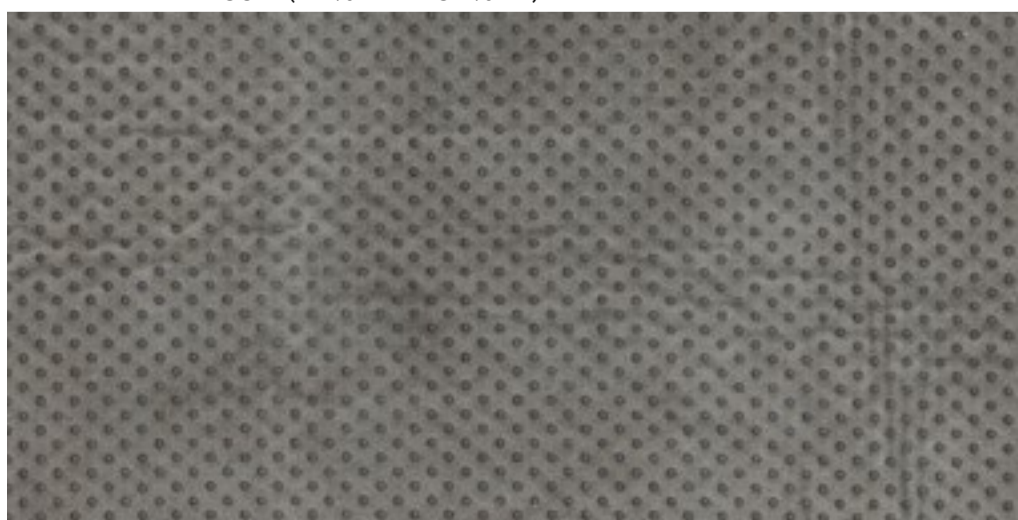
CAT. C 2274 (38% PC - 36% VI - 15% CO - 9% LI - 2% AF)



CAT. C 2352 (68% CO - 32% LI)



CAT. C 2350 (44%VI-16%PL-11%LI-10%WO-9%CO-6%PA-4%SE)

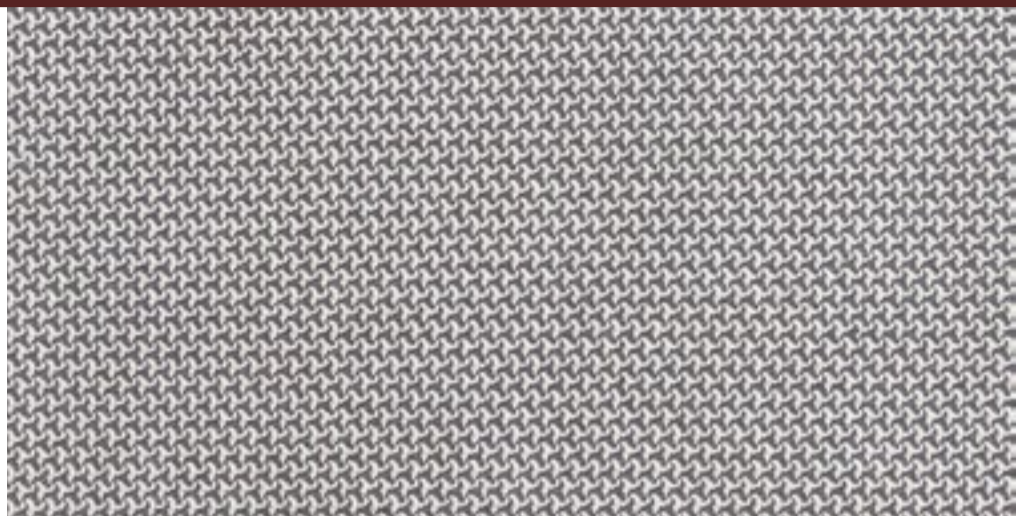


CAT. C 2403 (100% POL)

PELTROX



CAT. D 5103 (52% LI - 48% VI)



CAT. D 5189 (46% VI - 24% PL - 30% CO)



CAT. D 5203 (39% LI - 27% JU - 24% VI - 10% CO)



CAT. D 5193 (30% VI - 20% PL - 20% AC - 15%CO - 15% LI)



CAT. D 5072 (46% CO - 45%VI 9% LI)



CAT. D 5180 (54% JU - 46% LI)

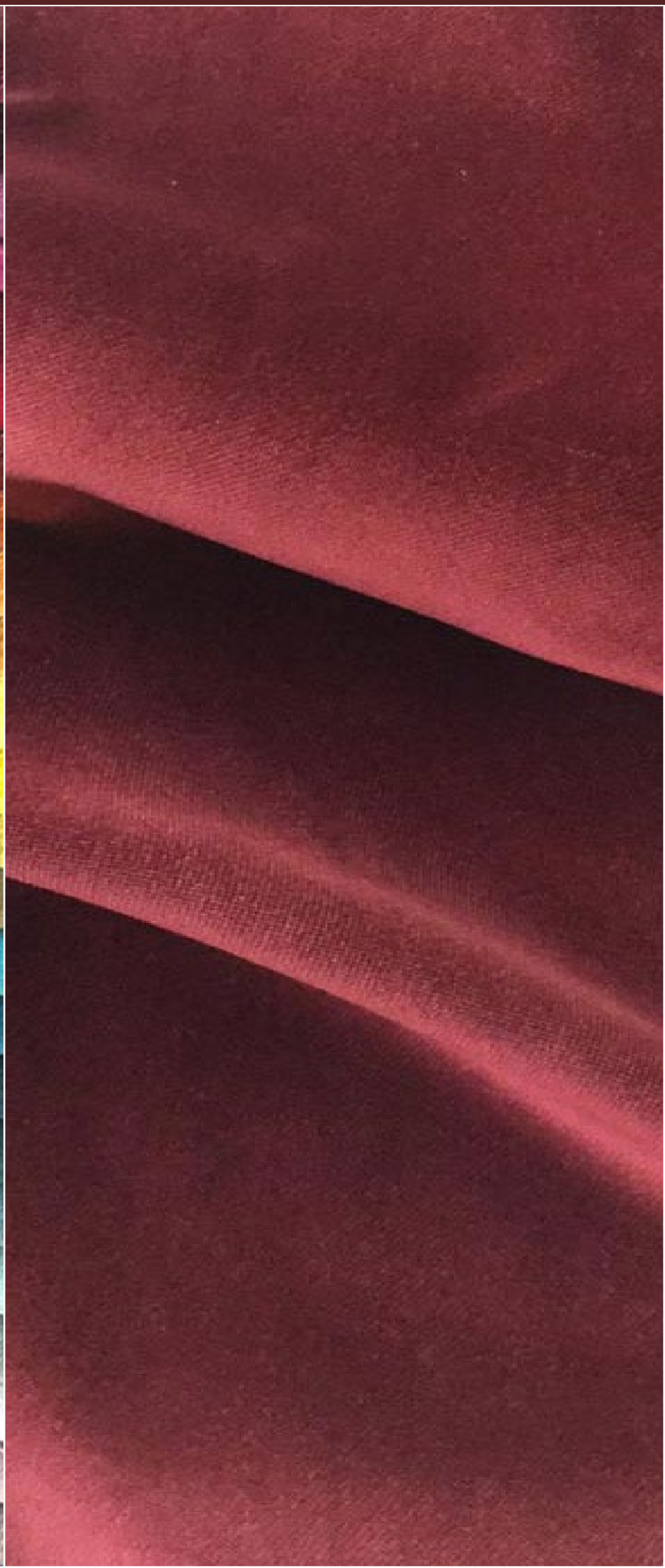


CAT. D 5182 (60% LI - 40% CO)



CAT. D 5200 (39% LI - 27% JU - 24% VI - 10% CO)

VELLUTI | VELVETS



VELVET



CAT. C 2383 (100% PL)



CAT. C 2397 (100% PL)



CAT. C 2401 (100% PL)



CAT. C 2399 (100% PL)



CAT. C 2398 (100% PL)

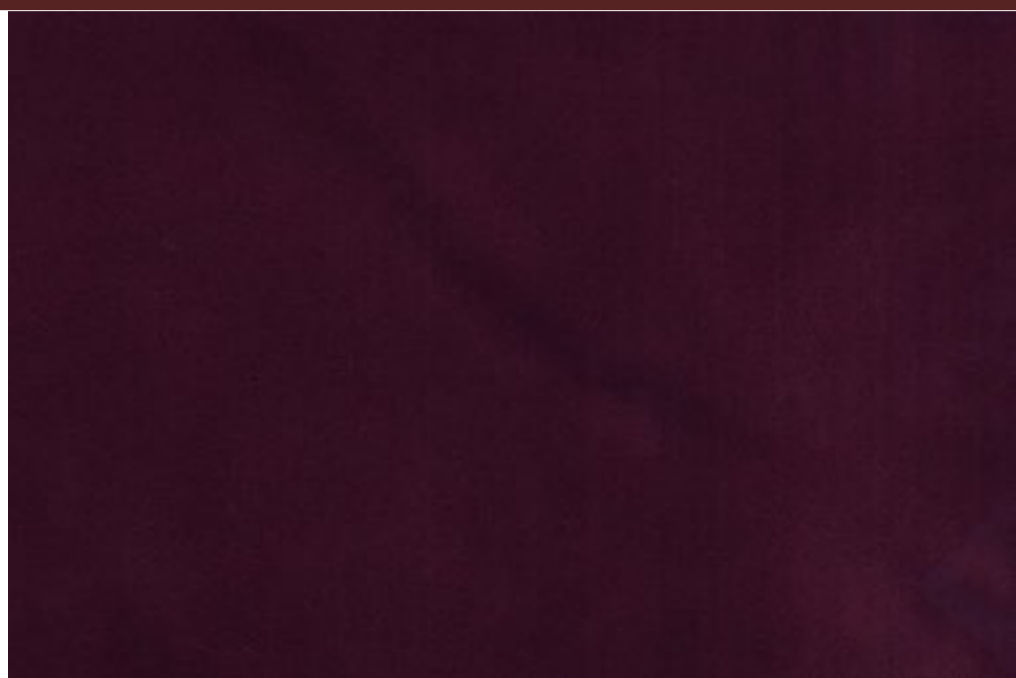


CAT. C 2400 (100% PL)

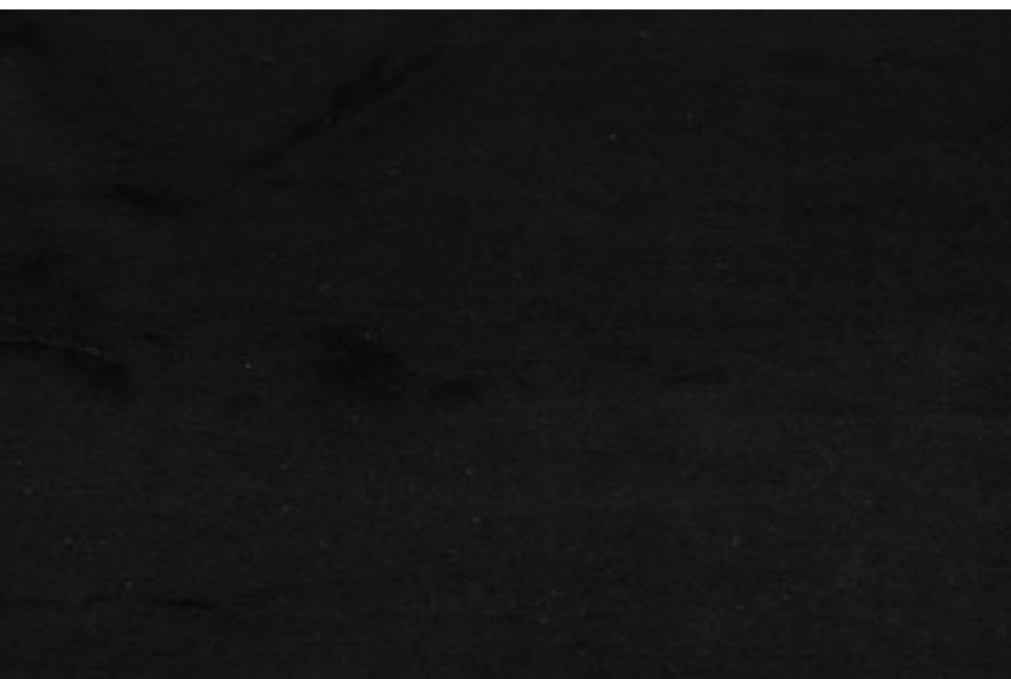
VELVET



CAT. C 2369 (100% PL)



CAT. D 5106 (100% CO)



CAT. C 2370 (100% PL)

ALIVAR

Alivar s.r.l. - Via Leonardo Da Vinci 118/14,
50028 Tavarnelle V.P. - Firenze - italy
t +39 055 8070115 f +39 055 8070127
www.alivar.com - alivar@alivar.com

