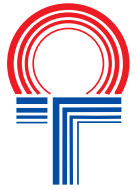
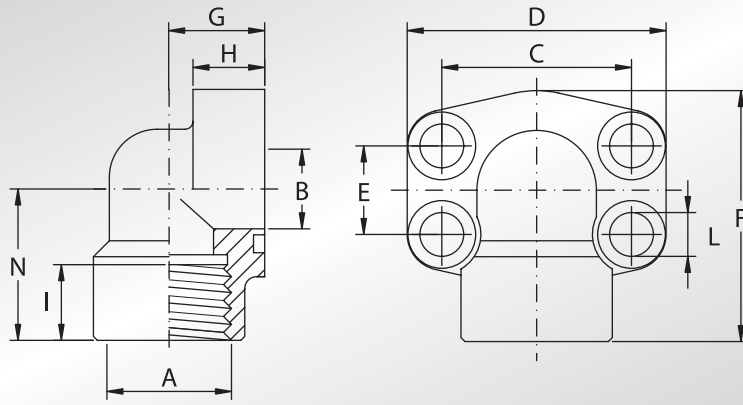


**FLANGE A 90°
FILETTATE
NPT**



**NPT
THREADED
90° FLANGES**



| Pressione max di esercizio raccomandata Kg/cm² | Grandezza | Tipo | Dimensioni | | | | | | | | | | Viti | | Or tipo | Peso Kg | |
|--|-----------|------|------------|---|---|---|---|---|---|---|---|---|--------|--------|---------|-----------|--|
| Maximum recommended working pressure Kg/cm² | Size | Type | Dimensions | | | | | | | | | | Screws | | Or type | Weight Kg | |
| | | | A | B | C | D | E | F | G | H | I | L | N | Metric | Unc | | |

SERIE 3000

| | | | | | | | | | | | | | | | | | |
|-----|-------|--------------|-----------|----|-------|-----|-------|-----|----|----|----|------|----|--------|------------|------|------|
| 345 | 1/2" | AFS08090N | 1/2" NPT | 13 | 38,10 | 54 | 17,48 | 60 | 20 | 16 | 19 | 9 | 37 | M8x30 | 5/16x1"1/4 | 4075 | 0,28 |
| 345 | 1/2" | AFS08090N038 | 3/8" NPT | 13 | 38,10 | 54 | 17,48 | 60 | 20 | 16 | 19 | 9 | 37 | M8x30 | 5/16x1"1/4 | 4075 | 0,29 |
| 345 | 3/4" | AFS10090N | 3/4" NPT | 19 | 47,63 | 65 | 22,23 | 63 | 24 | 18 | 19 | 11 | 38 | M10x35 | 3/8x1"1/2 | 4100 | 0,45 |
| 345 | 3/4" | AFS10090N012 | 1/2" NPT | 19 | 47,63 | 65 | 22,23 | 63 | 24 | 18 | 19 | 11 | 38 | M10x35 | 3/8x1"1/2 | 4100 | 0,48 |
| 345 | 1" | AFS10290N | 1" NPT | 25 | 52,37 | 70 | 26,19 | 70 | 28 | 19 | 20 | 11 | 43 | M10x35 | 3/8x1"1/2 | 4131 | 0,56 |
| 345 | 1" | AFS10290N034 | 3/4" NPT | 25 | 52,37 | 70 | 26,19 | 70 | 28 | 19 | 20 | 11 | 43 | M10x40 | 3/8x1"1/2 | 4131 | 0,60 |
| 276 | 1"1/4 | AFS10490N | 1"1/4 NPT | 32 | 58,72 | 79 | 30,18 | 85 | 34 | 21 | 22 | 11,5 | 51 | M10x40 | 7/16x1"3/4 | 4150 | 0,89 |
| 276 | 1"1/4 | AFS10490N100 | 1" NPT | 32 | 58,72 | 79 | 30,18 | 85 | 34 | 21 | 22 | 11,5 | 51 | M10x40 | 7/16x1"3/4 | 4150 | 0,92 |
| 207 | 1"1/2 | AFS10690N | 1"1/2 NPT | 38 | 69,85 | 93 | 35,71 | 95 | 38 | 25 | 25 | 13,5 | 56 | M12x45 | 1/2x1"3/4 | 4187 | 1,18 |
| 207 | 1"1/2 | AFS10690N114 | 1"1/4 NPT | 38 | 69,85 | 93 | 35,71 | 95 | 38 | 25 | 25 | 13,5 | 56 | M12x45 | 1/2x1"3/4 | 4187 | 1,21 |
| 207 | 2" | AFS10890N | 2" NPT | 51 | 77,77 | 110 | 42,88 | 110 | 42 | 25 | 28 | 13,5 | 65 | M12x45 | 1/2x1"3/4 | 4225 | 2,06 |
| 207 | 2" | AFS10890N112 | 1"1/2 NPT | 51 | 77,77 | 110 | 42,88 | 110 | 42 | 25 | 28 | 13,5 | 65 | M12x45 | 1/2x1"3/4 | 4225 | 2,10 |

SERIE 6000

| | | | | | | | | | | | | | | | | | |
|-----|-------|--------------|-----------|----|-------|-----|-------|-----|----|----|----|------|----|--------|------------|------|------|
| 414 | 1/2" | AFS40190N012 | 1/2" NPT | 13 | 40,49 | 54 | 18,24 | 60 | 20 | 16 | 19 | 9 | 37 | M8x30 | 5/16x1"1/4 | 4075 | 0,28 |
| 414 | 1/2" | AFS40190N038 | 3/8" NPT | 13 | 40,49 | 54 | 18,24 | 60 | 20 | 16 | 19 | 9 | 37 | M8x30 | 5/16x1"1/4 | 4075 | 0,29 |
| 414 | 3/4" | AFS40290N | 3/4" NPT | 19 | 50,80 | 70 | 23,80 | 70 | 28 | 19 | 20 | 11 | 43 | M10x40 | 3/8x1"1/2 | 4100 | 0,69 |
| 414 | 3/4" | AFS40290N012 | 1/2" NPT | 19 | 50,80 | 70 | 23,80 | 70 | 28 | 19 | 20 | 11 | 43 | M10x40 | 3/8x1"1/2 | 4100 | 0,72 |
| 414 | 1" | AFS40390N | 1" NPT | 25 | 57,15 | 79 | 27,76 | 85 | 34 | 21 | 22 | 13 | 51 | M12x45 | 7/16x1"3/4 | 4131 | 1,11 |
| 414 | 1" | AFS40390N034 | 3/4" NPT | 25 | 57,15 | 79 | 27,76 | 85 | 34 | 21 | 22 | 13 | 51 | M12x45 | 7/16x1"3/4 | 4131 | 1,15 |
| 414 | 1"1/4 | AFS40490N | 1"1/4 NPT | 32 | 66,68 | 93 | 31,75 | 95 | 38 | 25 | 25 | 15 * | 56 | M14x45 | 1/2x1"3/4 | 4150 | 1,45 |
| 414 | 1"1/4 | AFS40490N100 | 1" NPT | 32 | 66,68 | 93 | 31,75 | 95 | 38 | 25 | 25 | 15 * | 56 | M14x45 | 1/2x1"3/4 | 4150 | 1,50 |
| 414 | 1"1/2 | AFS40590N | 1"1/2 NPT | 38 | 79,38 | 110 | 36,50 | 110 | 42 | 25 | 28 | 17 | 65 | M16x50 | 5/8x2" | 4187 | 2,75 |
| 414 | 1"1/2 | AFS40590N114 | 1"1/4 NPT | 38 | 79,38 | 110 | 36,50 | 110 | 42 | 25 | 28 | 17 | 65 | M16x50 | 5/8x2" | 4187 | 2,80 |
| 414 | 2" | AFS40690N | 2" NPT | 51 | 96,82 | 134 | 44,45 | 132 | 45 | 35 | 33 | 21 | 75 | M20x70 | 3/4x2"1/2 | 4225 | 3,95 |
| 414 | 2" | AFS40690N112 | 1"1/2 NPT | 51 | 96,82 | 134 | 44,45 | 132 | 45 | 35 | 33 | 21 | 75 | M20x70 | 3/4x2"1/2 | 4225 | 4,40 |

**DESIGNAZIONE PER ORDINE
DESIGNATION FOR ORDER**

Solo flangia
Only flange

Flangia completa di viti metriche, grower e o-ring
Flange complete of metric screws, grower type washers and o-ring

Flangia completa di viti unc, grower e o-ring
Flange complete of unc screws, grower type washers and o-ring

Materiale / Material

ST52.3

AISI 316L

AFS...90N

AFX...90N

AFS...90NM

AFX...90NM

AFS...90NU

AFX...90NU

NOTE / NOTES

* Per viti unc L=13,5
* For unc screws L=13,5

set viti unc disponibili solo in acciaio al carbonio.
unc screws set available only in carbon steel.