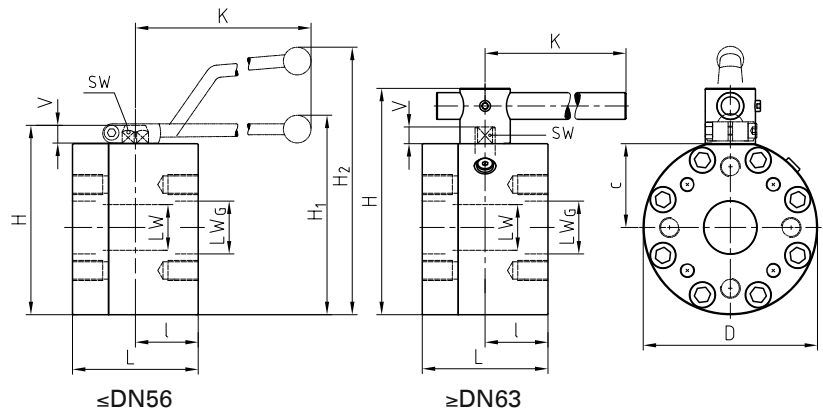
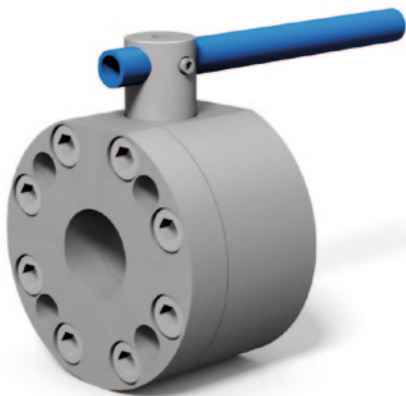


Flange ball valve with ISO connection Steel

KH-ISO



AVAILABLE SIZES

DN13 - DN200 (1/2" to 8")

CONNECTIONS

ISO 6164-1 (ISO250), ISO 6164-2 (ISO400), ISO320 (not part of ISO 6164)

ACCESSORIES ON REQUEST

- Locking devices page 226 - 230
- Actuators 224 - 225
- Mounting holes on request
- Position switches on request
- Combinations on request
- Detent on request

MATERIAL CODE DESCRIPTION

| Materials | DN15-50 212A | DN15-50 2128 | DN65-200 282A | DN65-200 2828 |
|-------------|-----------------|-----------------|------------------|------------------|
| Body | Steel | Steel | Steel | Steel |
| Ball | Steel | Steel | Steel | Steel |
| Stem | Steel | Steel | Duplex | Duplex |
| Ball seats | POM | POM | POM | POM |
| O-rings | NBR | FPM | NBR | FPM |
| Tmin / Tmax | -10°C / 100°C | -10°C / 100°C | -10°C / 100°C | -10°C / 100°C |

GENERAL DIMENSIONS ISO 6164-1 (ISO250)

| Type | LW | LW _G | L | I | D | H | c | V | K | SW | H ₁ | H ₂ | Lever |
|---------|----|-----------------|-----|----|-----|-----|------|----|-----|----|----------------|----------------|-------------------|
| KH-DN13 | 15 | 15 | 85 | 45 | 78 | 83 | 31 | 13 | 160 | 12 | - | 127 | Al |
| KH-DN19 | 20 | 20 | 88 | 38 | 119 | 110 | 36,5 | 14 | 200 | 14 | 114 | - | Zn |
| KH-DN25 | 25 | 25 | 88 | 38 | 126 | 117 | 39,5 | 14 | 200 | 14 | 120 | - | Zn |
| KH-DN32 | 32 | 32 | 105 | 50 | 145 | 158 | 68 | 17 | 320 | 17 | 167 | - | Al |
| KH-DN38 | 38 | 38 | 110 | 55 | 165 | 178 | 78 | 17 | 320 | 17 | 187 | - | Al |
| KH-DN51 | 48 | 47 | 116 | 58 | 198 | 210 | 94 | 17 | 320 | 17 | 219 | - | Al |
| KH-DN56 | 48 | 58 | 123 | 58 | 198 | 210 | 94 | 17 | 320 | 17 | 219 | - | Al |
| KH-DN63 | 63 | 70 | 150 | 75 | 208 | 270 | 100 | 20 | 600 | 16 | - | - | St ⁽¹⁾ |

GENERAL DIMENSIONS ISO 6164-2 (ISO400)

| Type | LW | LW _G | L | I | D | H | c | V | K | SW | H ₁ | H ₂ | Lever |
|-----------------|----|-----------------|-----|----|-----|-----|-------|----|-----|----|----------------|----------------|-------------------|
| KH-DN13 | 15 | 14 | 85 | 45 | 78 | 83 | 31 | 13 | 160 | 12 | - | 127 | Al |
| KH-DN19 | 20 | 18 | 88 | 38 | 119 | 110 | 36,5 | 14 | 200 | 14 | 114 | - | Zn |
| KH-DN25 | 25 | 22 | 88 | 38 | 126 | 117 | 39,5 | 14 | 200 | 14 | 120 | - | Zn |
| KH-DN32 | 32 | 29 | 105 | 50 | 145 | 158 | 68 | 17 | 320 | 17 | 167 | - | Al |
| KH-DN38 | 38 | 35 | 110 | 55 | 165 | 178 | 78 | 17 | 320 | 17 | 187 | - | Al |
| KH-DN51 | 48 | 43 | 123 | 58 | 198 | 210 | 94 | 17 | 320 | 17 | 219 | - | Al |
| KH-DN56 | 48 | 53 | 123 | 58 | 198 | 210 | 94 | 17 | 320 | 17 | 219 | - | Al |
| KH-DN63 | 65 | 58 | 150 | 75 | 224 | 286 | 108 | 20 | 600 | 16 | - | - | St ⁽¹⁾ |
| KH-DN70 | 65 | 63 | 150 | 75 | 224 | 286 | 108 | 20 | 600 | 16 | - | - | St ⁽¹⁾ |
| KH-DN80 (PN100) | 76 | 74 | 140 | 70 | 228 | 293 | 107 | 26 | 600 | 19 | - | - | St ⁽¹⁾ |
| KH-DN80 (PN400) | 76 | 76 | 170 | 78 | 258 | 315 | 114,5 | 26 | 600 | 19 | - | - | St ⁽¹⁾ |

Please note the pressure ratings of the connection flanges!

⁽¹⁾ Lever must be fixed centrally during operation. In case of vibration the handle may otherwise operate the valve by itself.

GENERAL DIMENSIONS ISO 320 (not part of ISO 6164)



| Type | LW | LW _G | L | I | D | H | c | V | K | SW | H ₁ | H ₂ | Lever |
|-----------------|-----|-----------------|-----|-----|-----|-----|------|----|-----|----|----------------|----------------|---------------------------------|
| KH-DN15 | | | | | | | | | | | | | |
| | | | | | | | | | | | | | on request |
| KH-DN20 | 20 | 20 | 88 | 38 | 119 | 110 | 36,5 | 14 | 200 | 14 | 114 | - | Zn |
| KH-DN25 | 25 | 25 | 88 | 38 | 126 | 117 | 39,5 | 14 | 200 | 14 | 120 | - | Zn |
| KH-DN32 | 32 | 32 | 105 | 50 | 145 | 158 | 68 | 17 | 320 | 17 | 167 | - | Al |
| KH-DN40 | 38 | 38 | 110 | 55 | 165 | 178 | 78 | 17 | 320 | 17 | 187 | - | Al |
| KH-DN50 | 48 | 48 | 122 | 58 | 198 | 210 | 94 | 17 | 320 | 17 | 219 | - | Al |
| KH-DN65 | 65 | 63 | 150 | 75 | 208 | 270 | 100 | 20 | 600 | 16 | - | - | St ⁽¹⁾ |
| KH-DN80 (PN100) | 76 | 76 | 140 | 70 | 215 | 279 | 100 | 26 | 600 | 19 | - | - | St ⁽¹⁾ |
| KH-DN80 (PN350) | 76 | 76 | | | | | | | | | | | refer to KH-DN80-ISO400 (PN400) |
| KH-DN100 | 100 | 100 | 200 | 100 | 260 | 327 | 122 | 26 | 900 | 24 | - | - | St ⁽¹⁾ |
| KH-DN125 | 118 | 118 | 230 | 110 | 390 | 470 | 185 | 32 | 900 | 36 | - | - | St ⁽¹⁾ |
| KH-DN150 | 150 | 150 | 285 | 130 | 390 | 475 | 190 | 32 | 900 | 36 | - | - | St ⁽¹⁾ |
| KH-DN200 | 192 | 200 | 378 | 150 | 456 | 598 | 223 | 61 | 940 | 46 | - | - | St ⁽¹⁾ |

Please note the pressure ratings of the connection flanges!

⁽¹⁾ Lever must be fixed centrally during operation. In case of vibration the handle may otherwise operate the valve by itself.

Flange ball valve with ISO connection Steel

KH-ISO

CONNECTION TYPE

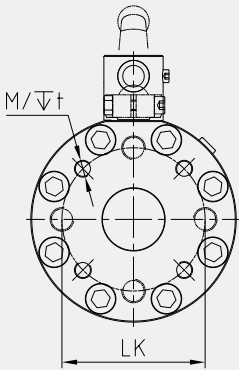
DIMENSIONS

ORDER CODE PER MATERIAL COMBINATION

ISO 6164-1

| Type | LK | M | t | Weight [Kg] |
|------|----|---|---|-------------|
|------|----|---|---|-------------|

| PN [bar] | 212A (282A) | 2128 (2828) |
|----------|-------------|-------------|
|----------|-------------|-------------|



| | | | | | | | |
|----------------|-------------------|---------|------|-------|-----|-------|-------|
| KH-DN13-ISO250 | 42 ⁽¹⁾ | 4 x M8 | 16 | 2,90 | 350 | 29452 | 37481 |
| KH-DN19-ISO250 | 50 | 4 x M8 | 15 | 6,80 | 350 | 29453 | 37482 |
| KH-DN25-ISO250 | 62 | 4 x M10 | 20 | 7,20 | 315 | 29455 | 37483 |
| KH-DN32-ISO250 | 73 | 4 x M12 | 21 | 12,50 | 250 | 40654 | 37484 |
| KH-DN38-ISO250 | 85 | 4 x M16 | 24,5 | 16,60 | 250 | 29538 | 37485 |
| KH-DN51-ISO250 | 98 | 4 x M16 | 25,5 | 24,90 | 250 | 37839 | 37486 |
| KH-DN56-ISO250 | 118 | 4 x M20 | 33 | 26,60 | 250 | 36011 | 37487 |
| KH-DN63-ISO250 | 145 | 4 x M20 | 33 | 36,90 | 250 | 31638 | 37488 |

CONNECTION TYPE

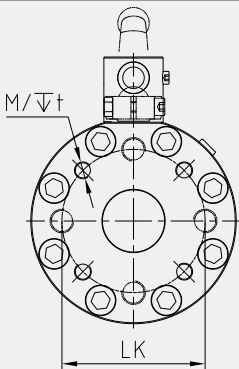
DIMENSIONS

ORDER CODE PER MATERIAL COMBINATION

ISO 6164-2

| Type | LK | M | t | Weight [Kg] |
|------|----|---|---|-------------|
|------|----|---|---|-------------|

| PN [bar] | 212A (282A) | 2128 (2828) |
|----------|-------------|-------------|
|----------|-------------|-------------|



| | | | | | | | |
|------------------------|-------------------|---------|------|-------|-----|-------|-------|
| KH-DN13-ISO400 | 42 ⁽¹⁾ | 4 x M8 | 16 | 2,90 | 400 | 37842 | 37849 |
| KH-DN19-ISO400 | 50 | 4 x M8 | 15 | 6,80 | 400 | 37843 | 37850 |
| KH-DN25-ISO400 | 62 | 4 x M10 | 20 | 7,20 | 400 | 37844 | 37851 |
| KH-DN32-ISO400 | 73 | 4 x M12 | 21 | 12,50 | 400 | 37845 | 37852 |
| KH-DN38-ISO400 | 85 | 4 x M16 | 24,5 | 16,60 | 400 | 19556 | 37853 |
| KH-DN51-ISO400 | 98 | 4 x M16 | 25,5 | 24,90 | 400 | 37846 | 37854 |
| KH-DN56-ISO400 | 118 | 4 x M20 | 31 | 26,60 | 400 | 36010 | 37855 |
| KH-DN63-ISO400 | 145 | 4 x M24 | 37,5 | 42,53 | 400 | 31493 | 15045 |
| KH-DN70-ISO400 | 160 | 4 x M24 | 37,5 | 43,00 | 315 | 37847 | 37856 |
| KH-DN80-ISO400 (PN100) | 175 | 4 x M30 | 35 | 51,00 | 100 | 37848 | 37857 |
| KH-DN80-ISO400 (PN400) | 175 | 4 x M30 | 35 | 63,00 | 400 | 58109 | 58110 |

CONNECTION TYPE

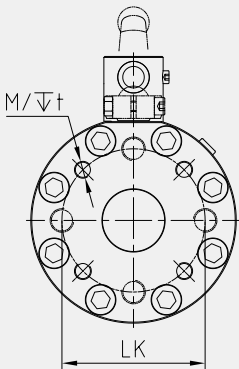
DIMENSIONS

ORDER CODE PER MATERIAL COMBINATION

ISO 320
(NOT PART OF ISO 6164)

| Type | LK | M | t | Weight [Kg] |
|------|----|---|---|-------------|
|------|----|---|---|-------------|

| PN [bar] | 212A (282A) | 2128 (2828) |
|----------|-------------|-------------|
|----------|-------------|-------------|

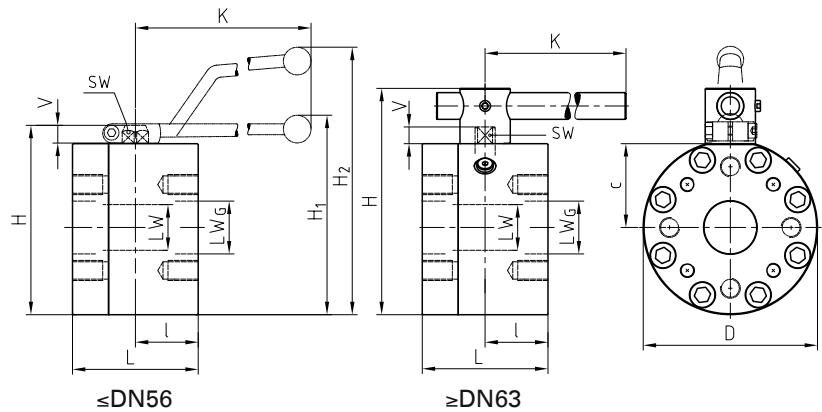
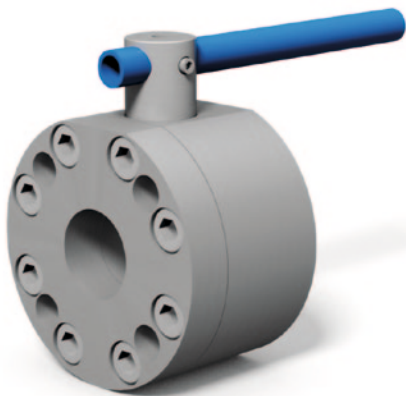


| | | | | | | | |
|------------------------|-----|---------|----|------------|-----|-------|-------|
| KH-DN15-ISO320 | 54 | 4 x M10 | | on request | 350 | 37827 | 37830 |
| KH-DN20-ISO320 | 64 | 4 x M12 | 22 | 6,80 | 350 | 37459 | 37463 |
| KH-DN25-ISO320 | 72 | 4 x M12 | 20 | 7,20 | 350 | 37828 | 37831 |
| KH-DN32-ISO320 | 80 | 4 x M16 | 24 | 12,50 | 350 | 37460 | 37464 |
| KH-DN40-ISO320 | 98 | 4 x M16 | 25 | 16,60 | 350 | 37461 | 37465 |
| KH-DN50-ISO320 | 118 | 4 x M20 | 28 | 24,90 | 350 | 37462 | 37466 |
| KH-DN65-ISO320 | 145 | 4 x M24 | 36 | 36,00 | 350 | 19987 | 37467 |
| KH-DN80-ISO320 (PN100) | 175 | 4 x M30 | 35 | 34,26 | 100 | 16635 | 32093 |
| KH-DN100-ISO320 | 200 | 8 x M24 | 36 | 70,00 | 350 | 34178 | 37468 |
| KH-DN125-ISO320 | 245 | 8 x M30 | 45 | 209,00 | 350 | 37829 | 37832 |
| KH-DN150-ISO320 | 245 | 8 x M30 | 46 | 225,00 | 350 | 45938 | 41962 |
| KH-DN200-ISO320 | 315 | 8 x M36 | 55 | 395,00 | 350 | 41393 | 41965 |

⁽¹⁾ rotated by 45°

Flange ball valve with ISO connection Stainless Steel

KH-ISO



AVAILABLE SIZES

DN13 - DN200 (1/2" to 8")

CONNECTIONS

ISO 6164-1 (ISO250), ISO 6164-2 (ISO400), ISO320 (not part of ISO 6164)

ACCESSORIES ON REQUEST

- Locking devices page 226 - 230
- Actuators 224 - 225
- Mounting holes on request
- Position switches on request
- Combinations on request
- Detent on request

MATERIAL CODE DESCRIPTION

| Materials | 442A | 4428 |
|-------------|-----------------|-----------------|
| Body | Stainless Steel | Stainless Steel |
| Ball | Stainless Steel | Stainless Steel |
| Stem | Stainless Steel | Stainless Steel |
| Ball seats | POM | POM |
| O-rings | NBR | FPM |
| Tmin / Tmax | -10°C / 100°C | -10°C / 100°C |

GENERAL DIMENSIONS ISO 6164-1 (ISO250)

| Type | LW | LW _G | L | I | D | H | c | V | K | SW | H ₁ | H ₂ | Lever |
|---------|----|-----------------|-----|----|-----|-----|------|----|-----|----|----------------|----------------|-------------------|
| KH-DN13 | 15 | 15 | 85 | 45 | 78 | 83 | 31 | 13 | 160 | 12 | - | 127 | Al |
| KH-DN19 | 20 | 20 | 88 | 38 | 119 | 110 | 36,5 | 14 | 200 | 14 | 114 | - | Zn |
| KH-DN25 | 25 | 25 | 88 | 38 | 126 | 117 | 39,5 | 14 | 200 | 14 | 120 | - | Zn |
| KH-DN32 | 32 | 32 | 105 | 50 | 145 | 158 | 68 | 17 | 320 | 17 | 167 | - | Al |
| KH-DN38 | 38 | 38 | 110 | 55 | 165 | 178 | 78 | 17 | 320 | 17 | 187 | - | Al |
| KH-DN51 | 48 | 47 | 116 | 58 | 198 | 210 | 94 | 17 | 320 | 17 | 219 | - | Al |
| KH-DN56 | 48 | 58 | 123 | 58 | 198 | 210 | 94 | 17 | 320 | 17 | 219 | - | Al |
| KH-DN63 | 63 | 70 | 150 | 75 | 208 | 270 | 100 | 20 | 600 | 16 | - | - | St ⁽¹⁾ |

GENERAL DIMENSIONS ISO 6164-2 (ISO400)

| Type | LW | LW _G | L | I | D | H | c | V | K | SW | H ₁ | H ₂ | Lever |
|-----------------|----|-----------------|-----|----|-----|-----|-------|----|-----|----|----------------|----------------|-------------------|
| KH-DN13 | 15 | 14 | 85 | 45 | 78 | 83 | 31 | 13 | 160 | 12 | - | 127 | Al |
| KH-DN19 | 20 | 18 | 88 | 38 | 119 | 110 | 36,5 | 14 | 200 | 14 | 114 | - | Zn |
| KH-DN25 | 25 | 22 | 88 | 38 | 126 | 117 | 39,5 | 14 | 200 | 14 | 120 | - | Zn |
| KH-DN32 | 32 | 29 | 105 | 50 | 145 | 158 | 68 | 17 | 320 | 17 | 167 | - | Al |
| KH-DN38 | 38 | 35 | 110 | 55 | 165 | 178 | 78 | 17 | 320 | 17 | 187 | - | Al |
| KH-DN51 | 48 | 43 | 123 | 58 | 198 | 210 | 94 | 17 | 320 | 17 | 219 | - | Al |
| KH-DN56 | 48 | 53 | 123 | 58 | 198 | 210 | 94 | 17 | 320 | 17 | 219 | - | Al |
| KH-DN63 | 65 | 58 | 150 | 75 | 224 | 286 | 108 | 20 | 600 | 16 | - | - | St ⁽¹⁾ |
| KH-DN70 | 65 | 63 | 150 | 75 | 224 | 286 | 108 | 20 | 600 | 16 | - | - | St ⁽¹⁾ |
| KH-DN80 (PN100) | 76 | 74 | 140 | 70 | 228 | 293 | 107 | 26 | 600 | 19 | - | - | St ⁽¹⁾ |
| KH-DN80 (PN400) | 76 | 76 | 170 | 78 | 258 | 315 | 114,5 | 26 | 600 | 19 | - | - | St ⁽¹⁾ |

Please note the pressure ratings of the connection flanges!

⁽¹⁾ Lever must be fixed centrally during operation. In case of vibration the handle may otherwise operate the valve by itself.

GENERAL DIMENSIONS ISO 320 (not part of ISO 6164)



| Type | LW | LW _G | L | I | D | H | c | V | K | SW | H ₁ | H ₂ | Lever |
|-----------------|-----|-----------------|-----|-----|-----|-----|---------------------------------|----|-----|----|----------------|----------------|-------------------|
| KH-DN15 | | | | | | | | | | | | | |
| | | | | | | | on request | | | | | | |
| KH-DN20 | 20 | 20 | 88 | 38 | 119 | 110 | 36,5 | 14 | 200 | 14 | 114 | - | Zn |
| KH-DN25 | 25 | 25 | 88 | 38 | 126 | 117 | 39,5 | 14 | 200 | 14 | 120 | - | Zn |
| KH-DN32 | 32 | 32 | 105 | 50 | 145 | 158 | 68 | 17 | 320 | 17 | 167 | - | Al |
| KH-DN40 | 38 | 38 | 110 | 55 | 165 | 178 | 78 | 17 | 320 | 17 | 187 | - | Al |
| KH-DN50 | 48 | 48 | 122 | 58 | 198 | 210 | 94 | 17 | 320 | 17 | 219 | - | Al |
| KH-DN65 | 65 | 63 | 150 | 75 | 208 | 270 | 100 | 20 | 600 | 16 | - | - | St ⁽¹⁾ |
| KH-DN80 (PN100) | 76 | 76 | 140 | 70 | 215 | 279 | 100 | 26 | 600 | 19 | - | - | St ⁽¹⁾ |
| KH-DN80 (PN350) | 76 | 76 | | | | | | | | | | | |
| | | | | | | | refer to KH-DN80-ISO400 (PN400) | | | | | | |
| KH-DN100 | 100 | 100 | 200 | 100 | 260 | 327 | 122 | 26 | 900 | 24 | - | - | St ⁽¹⁾ |
| KH-DN125 | 118 | 118 | 230 | 110 | 390 | 470 | 185 | 32 | 900 | 36 | - | - | St ⁽¹⁾ |
| KH-DN150 | 150 | 150 | 285 | 130 | 390 | 475 | 190 | 32 | 900 | 36 | - | - | St ⁽¹⁾ |
| KH-DN200 | 192 | 200 | 378 | 150 | 456 | 598 | 223 | 61 | 940 | 46 | - | - | St ⁽¹⁾ |

Please note the pressure ratings of the connection flanges!

⁽¹⁾ Lever must be fixed centrally during operation. In case of vibration the handle may otherwise operate the valve by itself.

Flange ball valve with ISO connection Stainless Steel

KH-ISO

CONNECTION TYPE

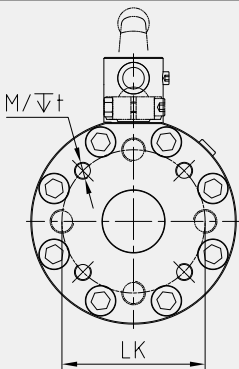
DIMENSIONS

ORDER CODE PER MATERIAL COMBINATION

ISO 6164-1

| Type | LK | M | t | Weight [Kg] |
|------|----|---|---|-------------|
|------|----|---|---|-------------|

| PN [bar] | 442A | 4428 |
|----------|------|------|
|----------|------|------|



| | | | | | | | |
|----------------|-------------------|---------|------|-------|-----|-------|-------|
| KH-DN13-ISO250 | 42 ⁽¹⁾ | 4 x M8 | 16 | 2,90 | 350 | 37489 | 37494 |
| KH-DN19-ISO250 | 50 | 4 x M8 | 15 | 6,80 | 350 | 37490 | 37495 |
| KH-DN25-ISO250 | 62 | 4 x M10 | 20 | 7,20 | 315 | 37491 | 37496 |
| KH-DN32-ISO250 | 73 | 4 x M12 | 21 | 12,50 | 250 | 37492 | 37497 |
| KH-DN38-ISO250 | 85 | 4 x M16 | 24,5 | 16,60 | 250 | 37493 | 37498 |
| KH-DN51-ISO250 | 98 | 4 x M16 | 25,5 | 24,90 | 250 | 37840 | 37499 |
| KH-DN56-ISO250 | 118 | 4 x M20 | 33 | 26,60 | 250 | 37841 | 37500 |
| KH-DN63-ISO250 | 145 | 4 x M20 | 33 | 36,90 | 250 | 35873 | 37501 |

CONNECTION TYPE

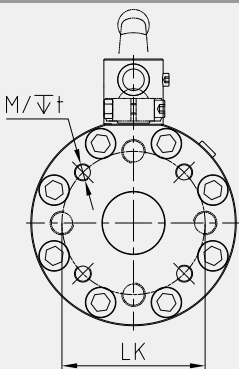
DIMENSIONS

ORDER CODE PER MATERIAL COMBINATION

ISO 6164-2

| Type | LK | M | t | Weight [Kg] |
|------|----|---|---|-------------|
|------|----|---|---|-------------|

| PN [bar] | 442A | 4428 |
|----------|------|------|
|----------|------|------|



| | | | | | | | |
|------------------------|-------------------|---------|------|-------|-----|-------|-------|
| KH-DN13-ISO400 | 42 ⁽¹⁾ | 4 x M8 | 16 | 2,90 | 400 | 37858 | 37868 |
| KH-DN19-ISO400 | 50 | 4 x M8 | 15 | 6,80 | 400 | 37859 | 37869 |
| KH-DN25-ISO400 | 62 | 4 x M10 | 20 | 7,20 | 400 | 37860 | 37870 |
| KH-DN32-ISO400 | 73 | 4 x M12 | 21 | 12,50 | 400 | 37861 | 37871 |
| KH-DN38-ISO400 | 85 | 4 x M16 | 24,5 | 16,60 | 400 | 37862 | 37872 |
| KH-DN51-ISO400 | 98 | 4 x M16 | 25,5 | 24,90 | 400 | 37863 | 37873 |
| KH-DN56-ISO400 | 118 | 4 x M20 | 31 | 26,60 | 400 | 37864 | 37874 |
| KH-DN63-ISO400 | 145 | 4 x M24 | 37,5 | 42,53 | 400 | 37865 | 37875 |
| KH-DN70-ISO400 | 160 | 4 x M24 | 37,5 | 43,00 | 315 | 37866 | 37876 |
| KH-DN80-ISO400 (PN100) | 175 | 4 x M30 | 35 | 51,00 | 100 | 37867 | 37877 |
| KH-DN80-ISO400 (PN400) | 175 | 4 x M30 | 35 | 63,00 | 400 | 58190 | 58111 |

CONNECTION TYPE

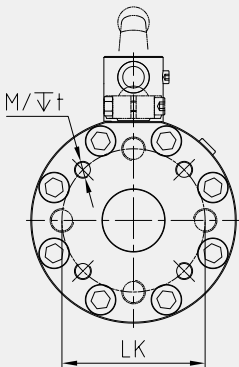
DIMENSIONS

ORDER CODE PER MATERIAL COMBINATION

ISO 320
(NOT PART OF ISO 6164)

| Type | LK | M | t | Weight [Kg] |
|------|----|---|---|-------------|
|------|----|---|---|-------------|

| PN [bar] | 442A | 4428 |
|----------|------|------|
|----------|------|------|



| | | | | | | | |
|------------------------|-----|---------|----|------------|-----|-------|-------|
| KH-DN15-ISO320 | 54 | 4 x M10 | | on request | 350 | 37833 | 37836 |
| KH-DN20-ISO320 | 64 | 4 x M12 | 22 | 6,80 | 350 | 37469 | 37474 |
| KH-DN25-ISO320 | 72 | 4 x M12 | 20 | 7,20 | 350 | 37834 | 37837 |
| KH-DN32-ISO320 | 80 | 4 x M16 | 24 | 12,50 | 350 | 37470 | 37475 |
| KH-DN40-ISO320 | 98 | 4 x M16 | 25 | 16,60 | 350 | 37471 | 37476 |
| KH-DN50-ISO320 | 118 | 4 x M20 | 28 | 24,90 | 350 | 37472 | 37477 |
| KH-DN65-ISO320 | 145 | 4 x M24 | 36 | 36,00 | 350 | 20043 | 37478 |
| KH-DN80-ISO320 (PN100) | 175 | 4 x M30 | 35 | 34,26 | 100 | 32608 | 31684 |
| KH-DN100-ISO320 | 200 | 8 x M24 | 36 | 70,00 | 350 | 37473 | 37479 |
| KH-DN125-ISO320 | 245 | 8 x M30 | 45 | 209,00 | 350 | 37835 | 37838 |
| KH-DN150-ISO320 | 245 | 8 x M30 | 46 | 225,00 | 350 | 41963 | 41964 |
| KH-DN200-ISO320 | 315 | 8 x M36 | 55 | 395,00 | 350 | 41966 | 41967 |

⁽¹⁾ rotated by 45°