

Pressure Gauge (analogue) - Type SPG



Pressure Gauge (Analogue) Type SPG (Stem Mounting)



Pressure Gauge (Analogue) Type SPG (Panel Mounting)

Product Description

Area of Application

- Mechanical pressure measurement

Features

- Suitable for hydraulic oil and gaseous media compatible with copper based alloys
- Available in nominal sizes 63 and 100 mm / 2.5 and 4 in
- Thread form: for BSP (G1/4 and G1/2), NPT (1/4 NPT and 1/2 NPT), SAE (7/16–20 UNF)
- Stainless Steel (1.4301) housing
- Acrylic sight glass
- Glycerine filled
- Standard dual scales with pressure indication in bar and PSI
- U-bolt or flange mounting kit on request

Note: Please consult STAUFF before you use SPG with other media.

Options

- Protective rubber cap
- Additional scale readings including personalisation
- U-bolt and flange mounting kits are available separately as spare parts

Technical Data

- Pressure gauge according to EN 837-1
- Subject to technical modifications

Accuracies

SPG-063: 1.6 (± 1.6% FS\* as per EN 837-1)  
 SPG-100: 1.0 (± 1.0% FS\* as per EN 837-1)

Permissible Temperatures

- Ambient: -20 °C ... +60 °C / -4 °F ... +140 °F
- Media: max. +60 °C / max. +140 °F

Protection Ratings

- IP 65: for all manometer SPG 100 and SPG 063 > 16 bar / 232 PSI  
 IP 65 protection rating: Dust tight and protected against water jets
- IP 54: for all manometer SPG 063 ≤ 16 bar / 232 PSI due to pressure compensation opening  
 IP 54 protection rating: Dust protected and protected against splashing water

Order Codes

SPG
063
-
000160
-
01
-
P
-
B04
-
U

1
2
3
4
5
6
7

① Series and Type

Stainless Steel Pressure Gauge **SPG**

② Size

Ø 63 mm, with G1/4 or 1/4 NPT connection **063**  
 Ø 100 mm, with G1/2 or 1/2 NPT connection **100**

③ Pressure Ranges (only for type 01 - bar/PSI)

-1 ... 1,5 bar / -14.5 ... 21 PSI	<b>(-1)-(1,5)</b>
-1 ... 3 bar / -14.5 ... 43 PSI	<b>(-1)-00003</b>
0 ... 10 bar / 0 ... 145 PSI	<b>00010</b>
0 ... 16 bar / 0 ... 232 PSI	<b>00016</b>
0 ... 25 bar / 0 ... 362 PSI	<b>00025</b>
0 ... 40 bar / 0 ... 580 PSI	<b>00040</b>
0 ... 60 bar / 0 ... 870 PSI	<b>00060</b>
0 ... 100 bar / 0 ... 1450 PSI	<b>00100</b>
0 ... 160 bar / 0 ... 2320 PSI	<b>00160</b>
0 ... 250 bar / 0 ... 3625 PSI	<b>00250</b>
0 ... 400 bar / 0 ... 5801 PSI	<b>00400</b>
0 ... 600 bar / 0 ... 8702 PSI	<b>00600</b>
0 ... 680 bar / 0 ... 9862 PSI	<b>00680</b>
0 ... 700 bar / 0 ... 10152 PSI	<b>00700</b>
0 ... 1000 bar / 0 ... 14503 PSI	<b>01000</b>

Note: Others on request. Information always refer to the pressure setting of the outside scale.

④ Styles of Scales

bar / PSI (bar outside/PSI inside - standard option)	<b>01</b>
bar	<b>02</b>
PSI	<b>03</b>
PSI / bar (PSI outside/ bar inside)	<b>05</b>
kPa / PSI (kPa outside/ PSI inside)	<b>10</b>

Note: Others on request.

⑤ Adaption

Stem mounting	<b>S</b>
Panel mounting	<b>P</b>

⑥ Process Connection

G1/4 (only SPG 063)	<b>B04</b>
G1/2 (only SPG 100)	<b>B08</b>
1/4 NPT (only SPG 063)	<b>N04</b>
1/2 NPT (only SPG 100)	<b>N08</b>
7/16–20 UNF (only SPG 063)	<b>U04</b>

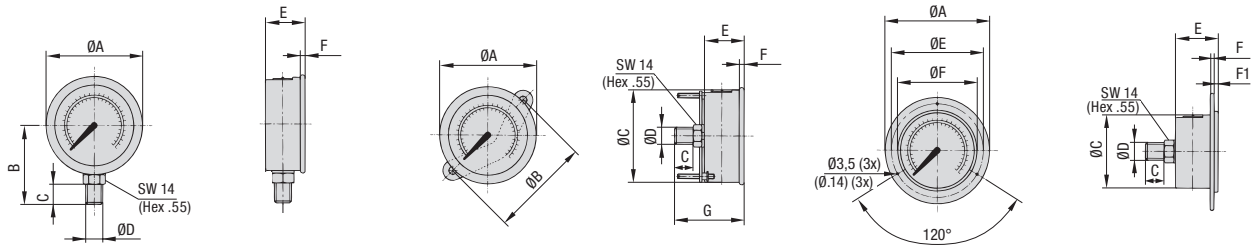
Note: Others on request.

⑦ Accessories

No accessory	<b>(none)</b>
U-bolt assembly	<b>U</b>
Front flange assembly (for panel mount only)	<b>F</b>
Rear flange assembly	<b>R</b>
U-bolt and front flange assembly (for panel mount only)	<b>UF</b>
Protective rubber cap (for stem mount only)	<b>G</b>

For further information on page B34, STAUFF Test section.

## Pressure Gauge (analogue) ▪ Type SPG



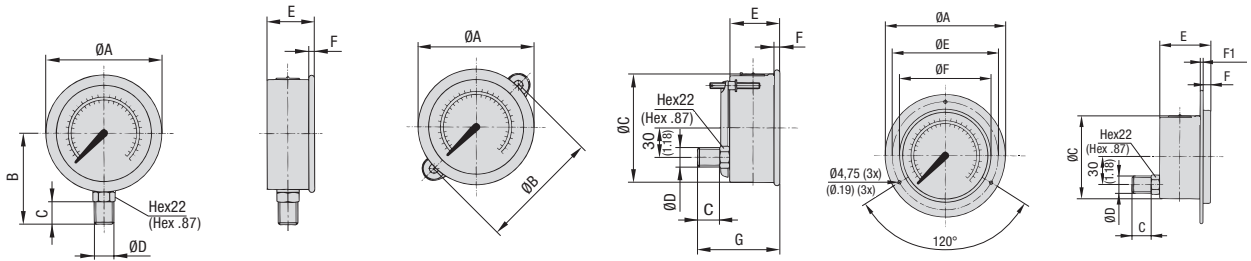
SPG 063 ... S ...

SPG 063 ... P ... U

SPG 063 ... P ... F

## Dimensions SPG 063

Version	Dimension (mm/in)											
Pressure Gauge	ØA	ØB	ØC	ØD	ØE	ØF	B	C	E	F	F1	G
SPG-063	69	-	-	G1/4	-	-	54	15	32	6,5	-	-
	2.72	-	-	1/4 NPT	-	-	2.13	.59	1.26	.26	-	-
				7/16-20 UNF								
SPG-063 ... U	69	72	62	G1/4	-	-	-	15	32	6,5	-	56
	2.72	2.83	2.44	1/4 NPT	-	-	-	.59	1.26	.26	-	2.20
				7/16-20 UNF								
SPG-063 ... F	85	-	62	G1/4	75	68	-	15	32	2	2	-
	3.35	-	2.44	1/4 NPT	2.95	2.68	-	.59	1.26	.008	.008	-
				7/16-20 UNF								



SPG 100 ... S ...

SPG 100 ... P ... U

SPG 100 ... P ... F

## Dimensions SPG 100

Version	Dimension (mm/in)											
Pressure Gauge	ØA	ØB	ØC	ØD	ØE	ØF	B	C	E	F	F1	G
SPG-100	107	-	-	G1/2	-	-	87	23	48	8	-	-
	4.21	-	-	1/2 NPT	-	-	3.43	.91	1.89	.31	-	-
SPG-100 ... U	107	107	100	G1/2	-	-	-	23	48	8	-	81,5
	4.21	4.21	3.94	1/2 NPT	-	-	-	.91	1.89	.31	-	3.21
SPG-100 ... F	132	-	100	G1/2	116	107	-	23	48	8	1,25	-
	5.20	-	3.94	1/2 NPT	4.57	4.21	-	.91	1.89	.31	.05	-

\* FS = Full Scale

Dimensional drawings: All dimensions in mm (in).