

# MINI-ENCLOSED GALVO 30W

## Fiber Laser Marking System



### System's Main Features:

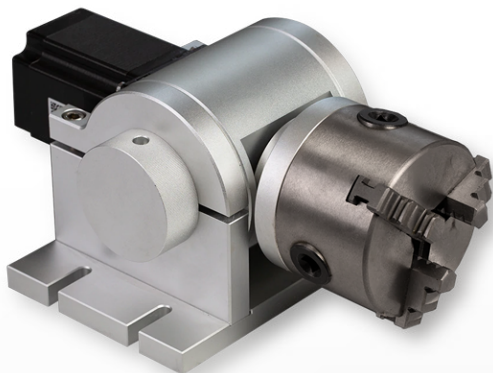
- Full Protection from Fiber Laser
- High Precision and Unparalleled speed
- Applications: metals and some type of non-metal materials
- Two Red Dots for easy focal length adjustment
- Visible Red Laser for alignment and preview
- Motorized up/down adjustable Z-axis.
- FREE operating software -Ezcad (Compatible with CorelDraw, Ai, AutoCad and Photoshop.)
- FREE one pair of laser protection goggles
- No moving parts, no consumables, maintenance free.
- Two years warranty on all parts and remote service.

## Technical Specifications

### MINI-ENCLOSED GALVO FIBER LASER MARKER

Laser Generator:	Raycus 30W
Laser Source Life Time:	100,000 hours
Standard Marking Area:	4.3" x 4.3" (110 mm x 110 mm)
Optional Marking Area:	150 x 150 mm / 175 x 175 mm / 200 x 200 mm
Galvanometer Scanner:	Sino-Galvo
F-θ Lens:	<b>Wavelength</b> (Singapore Brand)
Marking Speed:	up to 7000 mm/s
Laser Wavelength:	1.06 um
Beam divergence:	0.3 mrad
Focused beam diameter:	<=20 um
Min. line width:	<b>0.015 mm</b>
Min letter size:	<b>0.1 mm</b>
Marking depth:	0.03-0.5 mm
Power Supply:	110 V / 60 Hz
Cooling:	Air-cooled, no extra cooling needed
Working Environment:	Temperature: 0-104°F; Humidity: 30% - 85%
Machine Dimensions:	20" x 30" x 27" (500 x 710 x 675 mm)
Net Weight:	132 lbs (60 kg)

## Rotatory Device (Optional)



### 80mm THREE-JAW CHUCK ROTARY

Angle Precision	± 5%
Step Angle Degree	1,0
Max. Opening Diameter	80 mm
Warranty	1 year
Weight	18 lbs. (8 kg.)

# Packing List



Item	Spec	Unit
Fiber Laser Engraver	30W	1Set
Goggles		1Pair
Allen Wrench		1Set
USB Drive	16G	1Pc
Power Line	1.5m	1Pc
Foot Switch		1Pc
Positioning Screw	M6	Some
Lock Bar		2Pc
USB Line		1Pc
Workbench	300 x 200	1Pc <b>(Optional)</b>
Rotary Device	D69	1Set <b>(Optional)</b>
Laptop	Lenovo	1Set <b>(Optional)</b>