

Anee

# LS-400 Media Station



Wireless USB  
Numeric Keypad

- All-in-One Device to Offer Up to 4 Full HD Video Sources Capturing, Mixing, Switching, Recording and Live Streaming
- All-New Touch-Friendly Graphical User Interface
- Easy to Create a Professional Video

# Main Features

## Capture Up to 4 Video Sources at the Same Time

Via HDMI, VGA, RJ-45 interfaces or streaming inputs, AREC LS-400 supports up to 4 Full HD 1080p video sources capturing, mixing, switching, recording and live streaming. Users can choose 1 mixed video plus 4 individual videos recording for flexible use. LS-400 can mix audio via HDMI, 3.5mm stereo audio jacks and AREC wireless microphone.



## Touch-Friendly On-Screen Graphical User Interface

With a compatible interactive display and built-in a touch-friendly graphical user interface (GUI)\*, LS-400 allows users to start or stop recording/streaming, change recording layouts, and playback videos with easier control. LS-400 also provides control buttons on the front of machine.

\*The on-screen GUI supports mouse device control through USB connection.



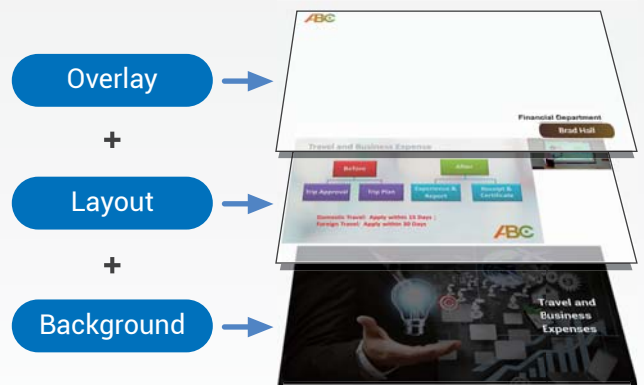
## Broadcast Your Mixed Video

LS-400 can stream mixed video to up to 2 platforms simultaneously, such as YouTube, Facebook, Twitch and other live broadcasting websites.



## Real-Time Assistant in Video Making

With AREC Online Director, LS-400 allows users to be in control of their video recording/streaming in real-time. It makes users easily switch/mix between sources, and add/remove backgrounds and overlay graphics (titles) for live production.



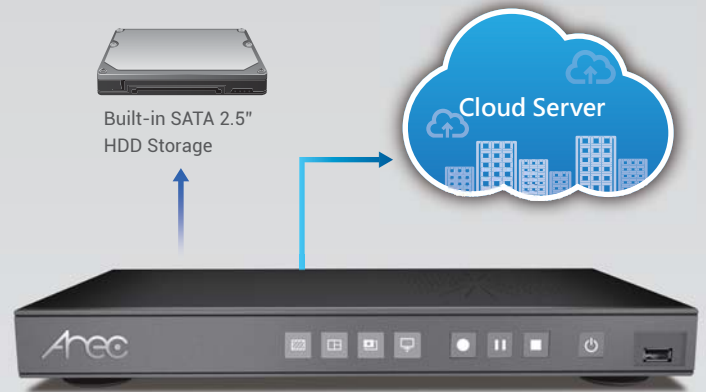
## AREC Video Manager : Videos with Just One Click

With the built-in video management platform, administrators or teachers can manage videos stored in the local Media Station remotely. They can download, upload or delete a video file, and edit video information. With available APIs, all of the video content, metadata, and thumbnail can be accessed seamlessly for third party integration.



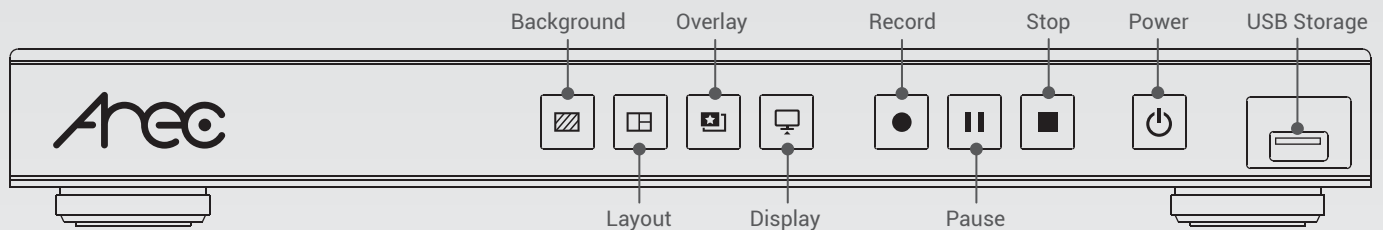
## Backup Your Recordings

With internal 1TB hard drive, LS-400 can save hundreds of hours recording videos. To increase security, LS-400 can automatically backup or upload recordings to AREC Media Center, FTP, SFTP, Opencast, Panopto and Kaltura.

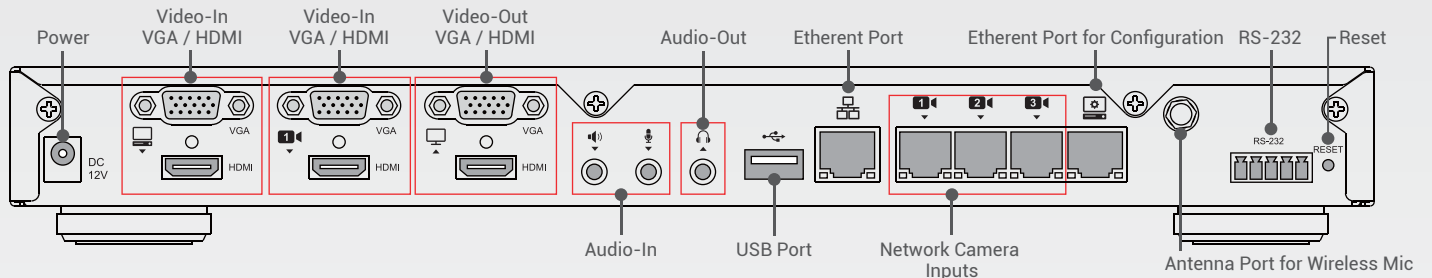


## Product Interface

### Front View



### Back View



## On-Screen Graphical User Interface



- 1 Overlay Images
- 2 Recording Layouts
- 3 Background
- 4 Custom Theme
- 5 Timer
- 6 Start / Stop Streaming
- 7 Start / Stop Recording
- 8 Snapshot
- 9 Playback Video
- 10 Setting
- 11 LS-400 IP Address
- 12 Audio Volumn Bar
- 13 Display Switch

# Specifications

Model Name	AREC LS-400
Video Inputs	
Video-in Interface	HDMI: 2 channels / VGA: 2 channels / RJ-45: 4 channels (Supports AREC Full HD network camera) / IP Streaming: 4 channels Note : Supports DVI and component video cable inputs with appropriate DVI to HDMI or component to VGA adapters
Max. Video-In channels	Maximum 4 channel synchronized recording HDMI / VGA: up to 2 channels Full HD network camera: up to 4 channels
Resolution Range	HDMI: 480i~1080p60 VGA video: 480i~1080p60 VGA PC: 640 x 480~1920 x 1080
Video Processing	
Compression	H.264 / AVC
Frame Rate	Max. 30fps
Bit Rate	300Kbps~4Mbps
Resolution	Max. 1080p (640x360 ~ 1920x1080)
Audio Inputs	
Audio-in Channels	3.5mm Stereo Mic in: 1 channel; 3.5mm Stereo Line in: 1 channel; Wireless Mic: 1 channel; HDMI: 2 channels
Audio Processing	
Compression	AAC-LC
Bit Rate	80Kbps~320Kbps
Video / Audio Outputs	
Video Outputs	1x HDMI display port 1x VGA display port (1 output option from loop-through, inputs monitoring and multi-source display) 2x H.264/AVC digital video over Ethernet Note: on-screen GUI is selectable between HDMI and VGA display port
Output Resolution	1080p60
Audio Outputs	3.5mm Stereo Line out: 1 channel; HDMI: 1 channel
Streaming / Main System Output	
Streaming Delay	1 sec.
Compatible Streaming Input Protocols	RTSP, RTP, RTMP
Streaming Output Protocols	RTP, RTMP (RTMPS), RTSP Note: 1. Users can choose 1 output option from RTP or RTMP only 2. RTP: MPEG2-TS over RTP unicast; MPEG2-TS over RTP multicast 3. RTSP (TCP/UDP): Max 6 clients RTSP streams available via public URL (example: pulled streams)
Storage, Backup, and Compatibility	
Built-in Local Storage	1TB 2.5" SATA III Hard Drive
External Storage	Supports USB drive recording through the front port
Locally Stored File Format	MP4
FTP Backup	Automatic backup to an FTP or SFTP server after recording is done
Third-Party Software Server	Compatible with Opencast, Panopto and Kaltura

Recording	
Recording Modes	Mixed mode, 1 Mixed + 4 individual original sources
Recording Layouts	34 layouts for user-defined, including full screen/ picture-in-picture/ picture-by-picture/ multi-channel split screen
Bookmark	Automatic and manual bookmark insertion
Background Images	Multiple for user-defined
On-Screen Images	Multiple for user-defined
Custom Theme	Multiple for user-defined, setting from web-based back stage
Live Broadcasting	
Live Broadcast to CDN or Stream Server	Yes, support RTMP protocol. Stream up to 2 platforms simultaneously
Video Information Editing	
Post Video Info Editing	Yes, through Video Manager web page
Video Info Adding	Video info will be added on video file name automatically while file output or uploading
Controls of LS-400 and Network Camera	
Touch Interface	Through recommended touch screen interactive projector or interactive module
Mouse Device	Through USB interface connection
Video Switcher	Yes, through AREC Online Director (web-based or desktop applications) or on-screen GUI for manual controls
External Control	Yes, supports RS-232 interface port
Control Button	Yes, at the front of the media station
Video Manager Platform	Built-in video manager platform: through web-based control interface
Camera Control	VISCA / PELCO-D / PELCO-P / ONVIF profiles
General Information	
Operation System	Embedded Linux system
Power Supply	12V / 2A
Temperature / Humidity	0~40°C / 90%
Dimension	354mm(L) x 185mm(W) x 46mm(H)
Weight	1.71kg (3.76 lbs)
Language	SC / TC / English / Russian / Spanish / Czech / Korean
Accessories	Power adapter / quick guide / wireless Mic antenna / wireless USB numeric keypad
Recommended AREC Products	
AREC Auto-Tracking System AREC Network Camera CI Series AREC Wireless Microphone	



AREC Inc. | www.arec.com | sales@arec.com  
Address: 3F, No. 367, Sec.2, Wenhua RD., Banqiao Dist., New Taipei City 220, Taiwan (R.O.C)  
TEL: +886-2-8259-5060

Exclusive Representative in Europe, Africa and CIS countries  
ADENA Limited | www.a-dena.com  
E-MAIL: yakov@a-dena.com  
TEL: +886-2-8712-1882

AREC reserves the right to modify product specifications without prior notice.