



Step 6 – Apply Mehron's Tooth FX Blood to the teeth. Dry the teeth with a towel, apply the Tooth FX and let it dry. You now have a finished Werewolf.

WEREWOLF

Makeup Kit

WEREWOLF

Makeup Kit

Makeup Artist: Cheryl Vaughn

Model: Jeffrey Salls

Photographer: Marc Salls



Mehron, Inc., Chestnut Ridge, NY 10977

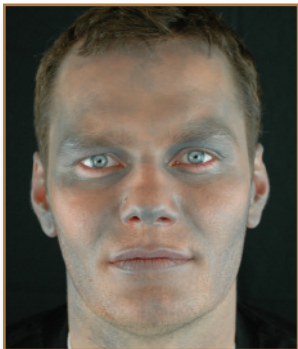
www.mehron.com



Easy
Step-by-Step
Instructions



Step 1 – Start with clean dry skin.



Step 2 – Apply the grey cream makeup with a sponge applicator to areas around the face to provide depth.



Step 3 – Apply the brown cream makeup with a sponge applicator to the areas around the grey and blend in the grey. This will provide an uneven surface. Keep the areas around the eyes dark. Lightly press Mehron's Colorset Powder into the makeup and dust off the excess.



Step 4 – Draw with the Black Pencil Liner the lines around the nose and eyes. Thicken the eyebrows. Darken the end of the nose. Lightly press Mehron's Colorset Powder into the makeup and dust off the excess.



Step 5 – Apply crepe hair to the areas around the hairline, eyebrows and along the jawline. Crepe comes in a braid and can be applied wavy or straight. (Tip: To straighten the hair use steam. Place the hair under a dry cloth and use a steam iron on top or a wet cloth with a dry iron. Never apply heat directly to the hair.)

Cut small sections of the crepe hair about 2 inches and spread the hair out with the fingers. Apply Mehron's Spirit Gum to the area for the hair. Allow the Spirit Gum to become tacky. Press the ends of the hair into the glue and hold. (Tip: Start at the back (under the chin) and work forward and layer the hair.) When you are done, use your fingers to comb through the hair.