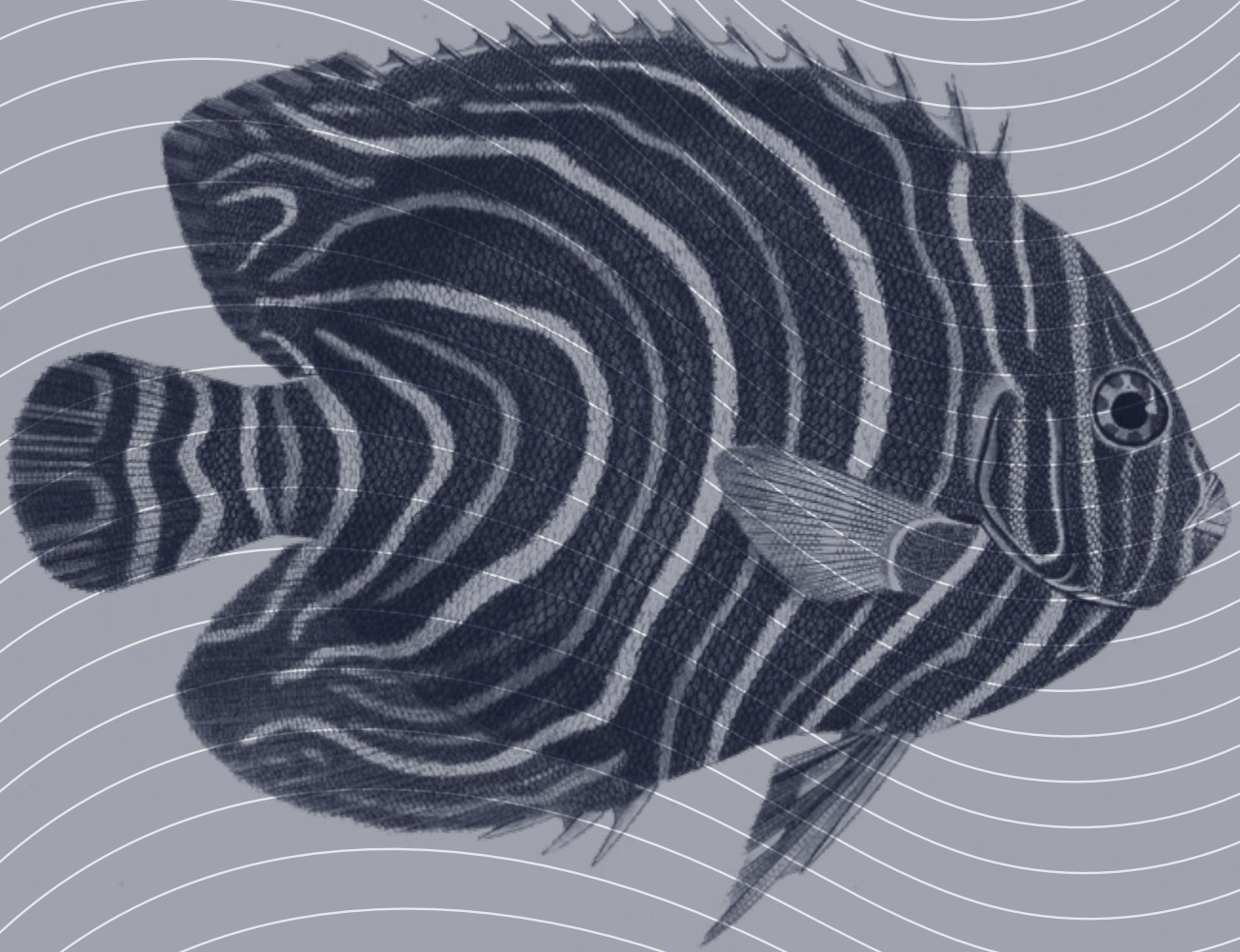




(agora)[®]

Upholstery

NAUTIC COLLECTION



Sauleda

since 1897



(agora)[®]

Upholstery

NAUTIC COLLECTION

The marine world is an experience that awakens the senses. Settle into our upholstery fabrics to enjoy the roar of the waves, the taste of the salty sea and the heartbeat of your new adventure.

El mundo marino es una experiencia que involucra todos los sentidos. Acomódate en nuestros tejidos de tapicería para disfrutar del rugir de las olas, los azules del mar, el sabor a sal y el latir de una nueva aventura.

Sauleda
since 1897



LA MENORQUINA

La Menorquina is a typical Mediterranean boat dating from the 13th century. In the picture: 1216 Lines Marino and 3723 Marino.

La Menorquina es una barca típica del Mediterráneo que data del siglo XIII. Viene aparejada con un árbol único y una vela latina. En la fotografía: 1216 Agora Tandem Lines Marino y 3723 Marino.

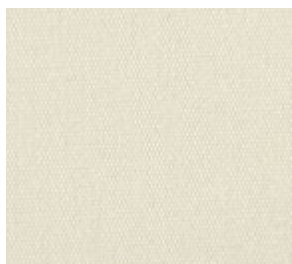
Agora Plains/ Agora Lisos



Optik
3934 ●



Blanco
3701 ● ●
3837 ●
1641 G



Natural
3702 ● ●
3815 ●



Avena
3707 ●
3828 ●
1642 G



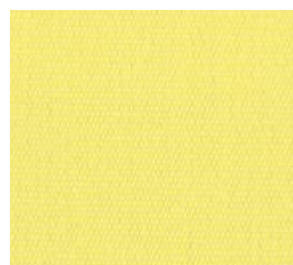
Alabastro
3703 ●



Marfil
3704 ●
3838 ●



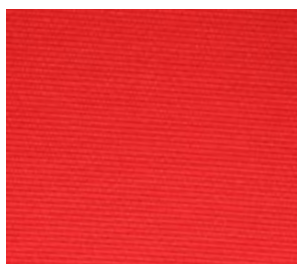
Integral
3705 ● ●
3839 ●



Limon
3935 ●



Coco
3820 ●
3836 ●



Logo Red
1226 ●



Granate
3711 ● ●
3840 ●



Acqua
3940 ●



Ocean
1367 ●
1643 G



Glacier
1368 ●



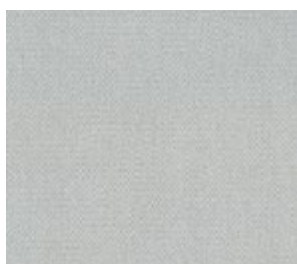
Azul
3722 ● ●
3855 ●



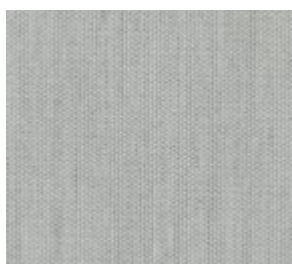
Marino
3723 ● ●
3843 ●
1644 G



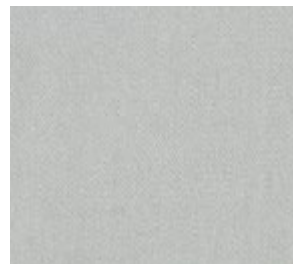
Admiral
3859 ●



Silver
3728 ●
3844 ●

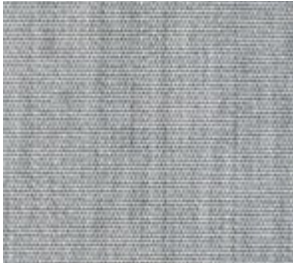


Quartz
1369 ●



Perla
3735 ●
1645 G

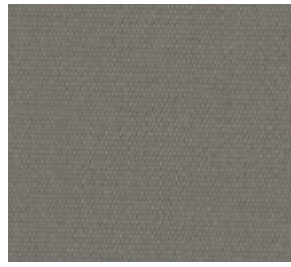
● 160 cm /63" ● 137 cm /54" ● WATERPROOF ● GREEN FABRIC



Piedra
3825 ●
3834 ●



Gris
1231 ●



Mineral
3729 ● ●
3845 ●



Basalto
3730 ●



Aral
3943 ●



Grafito
3823 ●
3833 ●

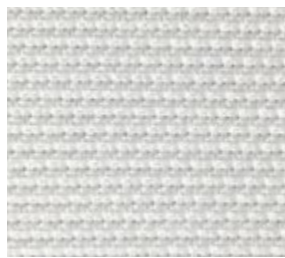


Antracita
3731 ● ●
3846 ●
1646 ☞



Negro
3732 ● ●
3847 ●
1647 ☞

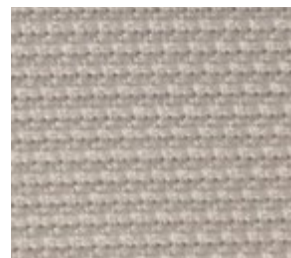
Agora Natural Shades



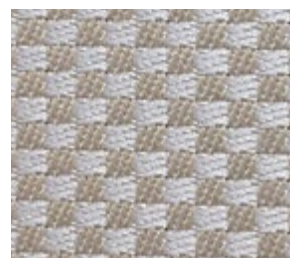
Bruma Nieve
1021



Senda Nieve
1046



Bruma Avena
1022



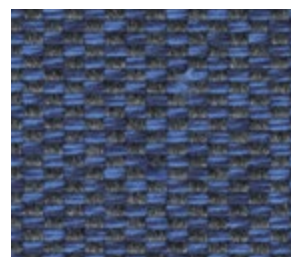
Senda Avena
1047



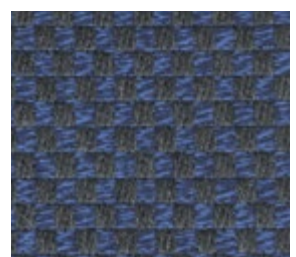
Bruma Agua
1020



Senda Agua
1045



Bruma Oceano
1018



Senda Oceano
1043



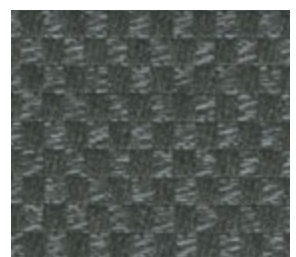
Bruma Niebla
1007



Senda Niebla
1032



Bruma Grafito
1004



Senda Grafito
1029

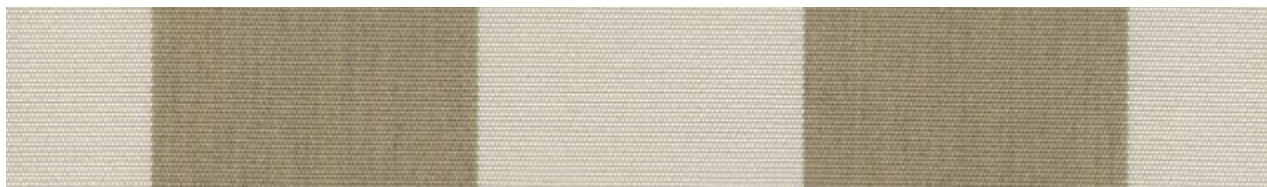
Agora Tandem



Lines Marino

1216

10 cm



Lines Integral

1215

10 cm



Lines Piedra

1223

10 cm



Lines Grafito

1220

10 cm



Flamé Blanco

1200



Flamé Marfil

1209



Flamé Beige

1201



Flamé Integral

1207



Flamé Sand

1211



Flamé Piedra

1210



Flamé Marino

1208



Flamé Grafito

1204

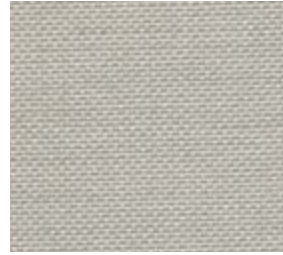
Agora Panama



Panama Blanco
3739



Panama Marfil
3741



Panama Marble 
1322



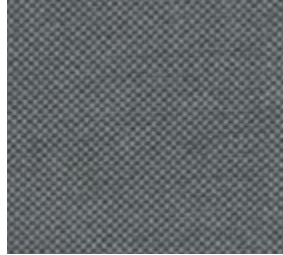
Panama Fossil
3659



Panama Integral
3740



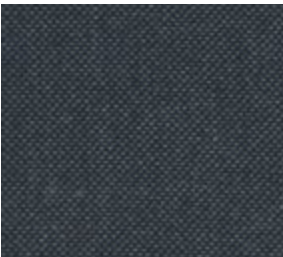
Panama Moka 
1323



Panama Stone Grey
3669
1648 



Panama Brisa
8011



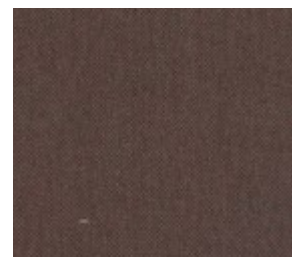
Panama Navy 
1319



Panama Grafito
8013



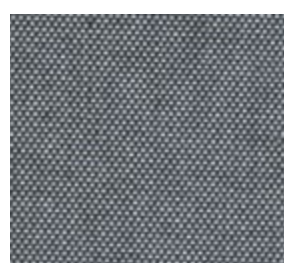
Panama Citron
8003



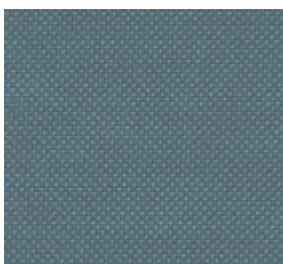
Panama Brasserie 
1321



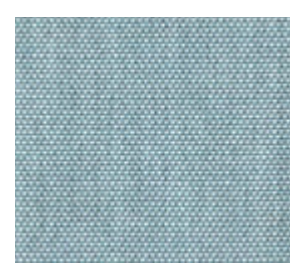
Panama Cloud
3658



Panama Ash
3743
1649 



Panama Ocean
3661



Panama Acqua
8006
1650 

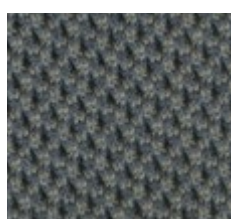
Agora 3D



Natural
1360



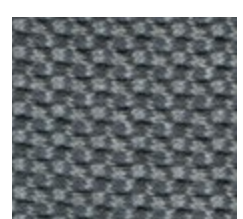
Sand
1361



Mineral
1366

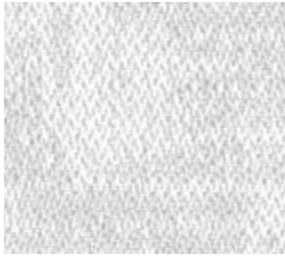


Pacific
1362

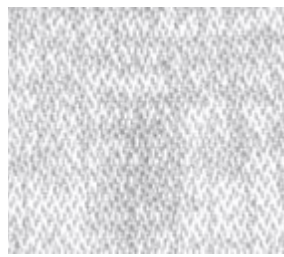


Smoke
1364

Agora Artisan



Artisan Hueso
1410



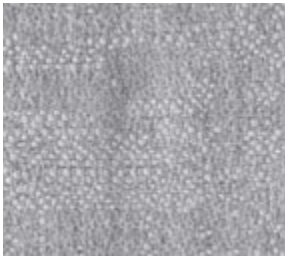
Artisan Perla
1412



Artisan Nacar
1401



Artisan Brisa
1405



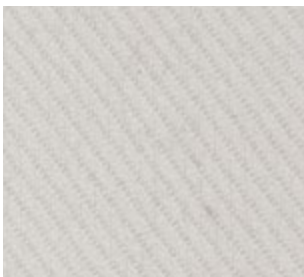
Artisan Acero
1413



Artisan Grafito
1416

Agora Twitell

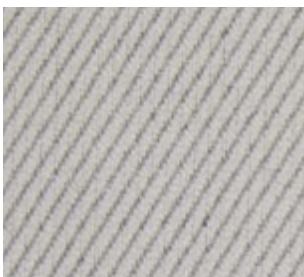
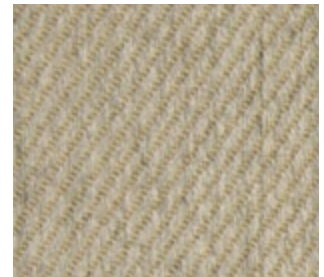
Two sided fabric/ Tejido a doble cara



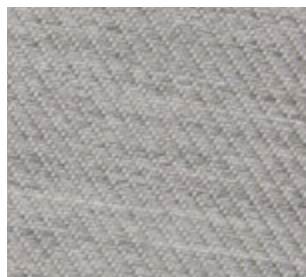
Twitell Jazmin 3960



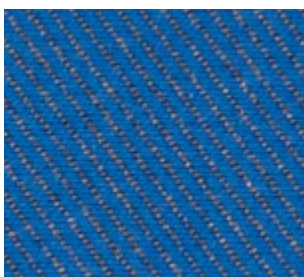
Twitell Ery 3964



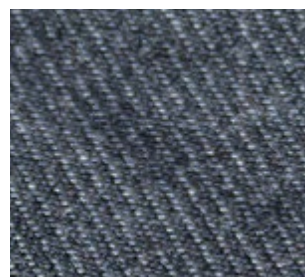
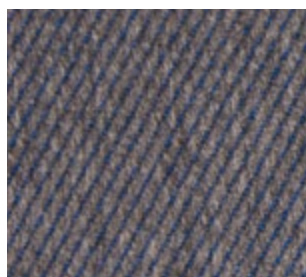
Agora Twitell Sacha 3961



Twitell Usambra 3971



Twitell Ludo 3975



Twitell Io 3978



Collection Colección	Width Ancho	Weight Peso	Rapport
Artisan	160 cm	450g/m ²	-
Bruma	160 cm	400g/m ²	-
Flamé	160 cm	280g/m ²	-
Lines	160 cm	260g/m ²	10 cm
Panama	160 cm	280g/m ²	-
Plains	160 cm 137 cm 320 cm	260g/m ²	-
Senda	160 cm	440g/m ²	-
Twitell	160 cm	300g/m ²	-
Waterproof Plain	155 cm	304g/m ²	-
3D	190 cm	510g/m ²	-

Composition

Composición



100% SOLUTION DYED ACRYLIC

In Agora® fabrics, colour pigments impregnate the polymer dissolution before the fibre is formed. That way, the yarn is coloured "in the heart" giving it excellent colour fastness and exceptional behaviour in outdoor conditions and in the presence of micro-organisms.

En los tejidos Agora®, los pigmentos impregnan la disolución del polímero antes de formar la fibra. De esa manera, el hilo está coloreado "en el corazón", lo que le confiere una excelente solidez del color y un comportamiento excepcional en condiciones exteriores y en presencia de microorganismos.

Finish

Acabado


Water repellent, stain treatment.


Repelente al agua, tratamiento antimanchas.



Sensitive values of tolerance of +/- 5% Valores susceptibles de tolerancia de +/- 5%

Optional fabric treatments / Acabados opcionales:

 Waterproof / Impermeable
Water column 1000 mm
Columna de agua 1000 mm

 Flame retardant / Ignífugo
Une 1021 parts 1-2
IMO PEF 2010 Anex 1. Part 8
BS 5852 Cigarette & Match



GREEN
by Soljeda & Pureit

- 55% pollution / polución
- 60% molds / mohos
+70% self-cleaning / autolimpieza



100% SOLUTION DYED ACRYLIC

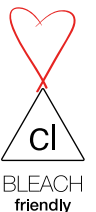
WATERPROOF

GREEN®

Different Uses Usos diferentes



Cleaning instructions Manutención



masacril
EXCLUSIVA FIBRA ACRILICA - EXCLUSIVE ACRYLIC FIBER



OEKO-TEX®
CONFIDENCE IN TEXTILES
STANDARD 100

Sauleda

since 1897



100% SOLUTION DYED ACRYLIC/
100% ACRÍLICO TINTADO EN MASA



Dimensional Stability
Estabilidad Dimensional



Quick Drying
Rápido Secado



Breathable
Transpirante



Water Repellent
Repelente al agua



Antibacterial
Antibacteriano



Climatic
Climático



Maximum Resistance
Máxima Resistencia



Anti Stain
Anti Manchas



Anti UVI
Anti UVI



Reversible
Doble Cara



Respects the Environment
Producción Respetuosa



Easy to Maintain
Fácil Mantenimiento

MAINTENANCE

- Eliminate the dirt by gently brushing or vacuuming the fabric.
- Occasionally use a water and soft soap solution to clean the fabric (max. 30°C).
- Apply to the fabric and then rinse with running water.
- Let the fabric dry completely.
- Do not use solvents or abrasive detergents.

BARRIER EFFECT

All our acrylic fabrics have been impregnated with Sauleda Fabric Protector. This creates a barrier effect and reinforces the water-repellent properties of the fabric. Furthermore, it delays the adherence of dirt to the fabric.

It is important to know that agents such as acid rain or bird excrements, and washing the fabric with abrasive products may damage the Sauleda Fabric Protector coating.

The 5 year warranty covers abnormal deterioration of the fabric fibre and colour and takes effect from the date of installation, provided there is normal exposure to the sun and atmospheric agents in general. Please consult the warranty terms on www.sauleda.com

MANTENIMIENTO

- Eliminar la suciedad mediante cepillado o aspirado suave de la lona.
- Esporádicamente utilizar una solución de agua y jabón neutro (max 30°C).
- Aplicar sobre la lona y posteriormente aclarar con abundante agua.
- Dejar secar totalmente la lona.
- No utilizar disolventes ni detergentes abrasivos.

EFFECTO BARRERA

El recubrimiento con Sauleda Fabric Protector de todos nuestros tejidos acrílicos, crea un efecto barrera reforzando la repelencia al agua y retardando la adherencia de la suciedad.

Importante: agentes como la lluvia ácida o los excrementos de los pájaros, así como un lavado abrasivo de la lona, pueden dañar el recubrimiento de Sauleda Fabric Protector.

La garantía de 5 años cubre un deterioro anormal de la fibra y el color de la lona y empieza a contar desde la fecha de su instalación, siempre que exista una exposición normal al sol y a los agentes atmosféricos en general. Consulte los términos de la garantía en www.sauleda.com



Catalogue



Store

Free download available:
Descarga gratis disponible:





Sauleda

since 1897

Travessera de les Corts, 102 08028 Barcelona (Spain)

+34 933 397 150
sauleda@sauleda.com



@sauledatextiles

www.sauleda.com