

CAST PART NO
IN RECESS

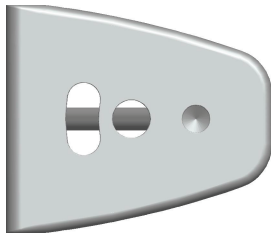
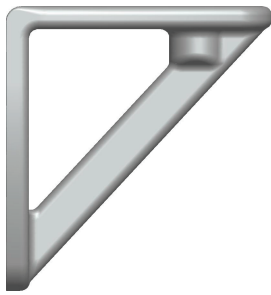
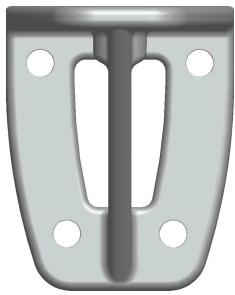
FEED AREAS TO BE GROUND FLUSH
CAST PART NO. AS SHOWN
SHOTBLAST/RUMBLE
ELECTRO POLISH

A
2:1


NOTE: 3-D geometry file L:\igs.-shop.sit etc.) date to correspond with drawing date or latest revision date. E.o. 999-999-yy-mm-dd

No	Qty	Revision	Date	Sign
1	1	TOLERANCE CHANGE TO SS-ISO 2768-c	11-02-22	MA

SELÉN		BOW RING BRACKET 90° 60x70x75			
Material	AISI_316	Estimated mass properties:	Weight	Volume	Density
			326.0g	40.6cm ³	8.03g/cm ³
Tolerance acc. to SS-ISO 2768-m unless otherwise stated	Replaced by	Releasing	x	File	3050
Drawn	Date	Scale	Revision	Release	Approved
HM	10-12-01	1:1	-	Production	Part No.
					508-834



NOTE: 3-D geometry file L-figs.-step, sll etc.) date to correspond with drawing date or latest revision date. E.o. 999-999-yy-mm-dd

		BOW RING BRACKET 90° 60x70x75			
		Material	Estimated mass properties:	Weight	Volume
Material AISI_316		Estimated mass properties: Replaced by	Weight 326,0g	Volume 40,6cm ³	Density 8,03g/cm ³
Tolerance acc. to SS-ISO 2768-m unless otherwise stated		Replaced by Replacing	Weight x	Volume x	Density File 3050
Drawn	Date	Scale	Revision	Release	Approved
HM	10-12-01	1:1	-	Production	Part No. 508-834

No	Qty	Revision	Date	Sign